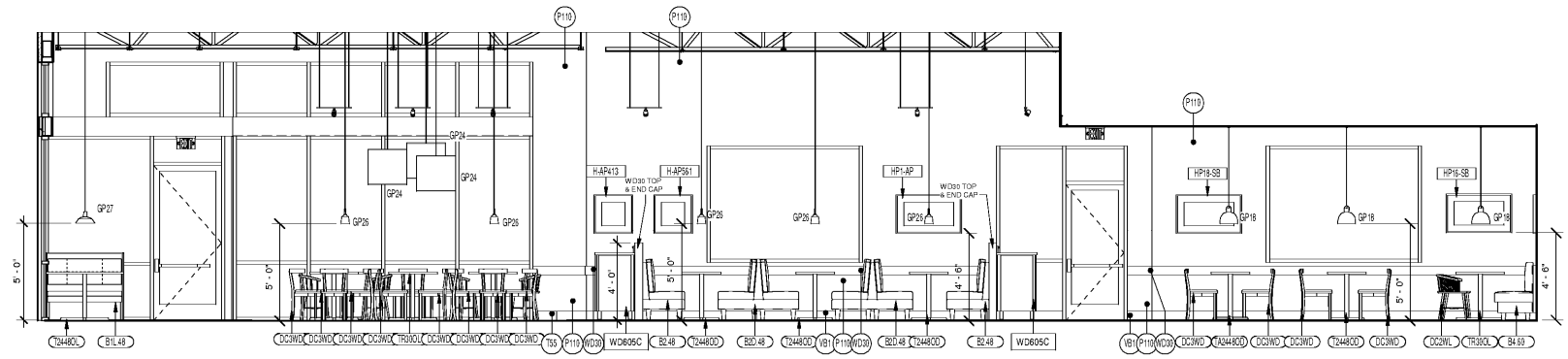
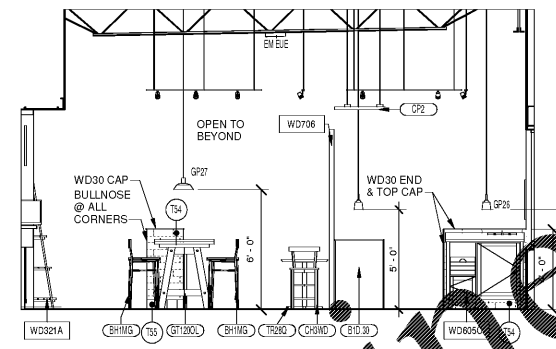


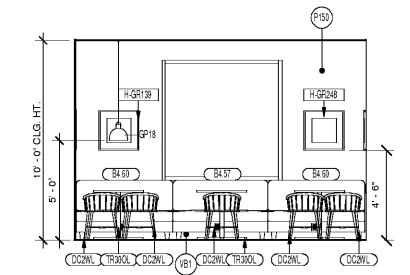
11/1/2018 9:35:46 AM



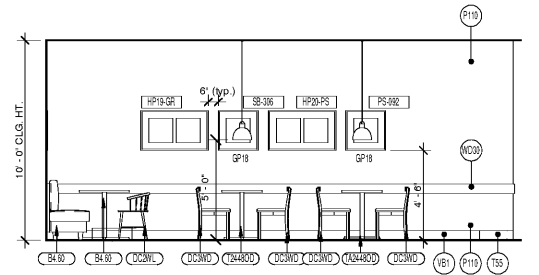
1 | DINING ELEVATION
1/4" = 1'-0"



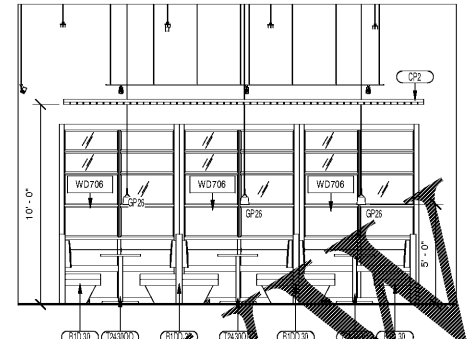
2 | DINING ELEVATION
1/4" = 1'-0"



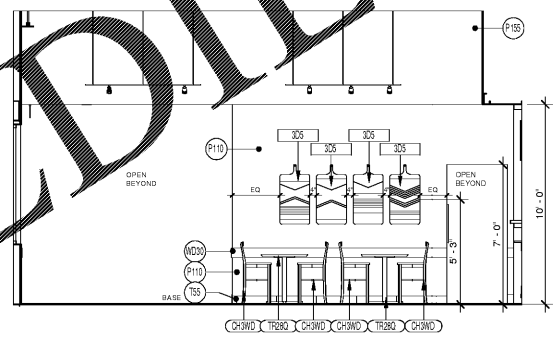
3 | DINING ELEVATION
1/4" = 1'-0"



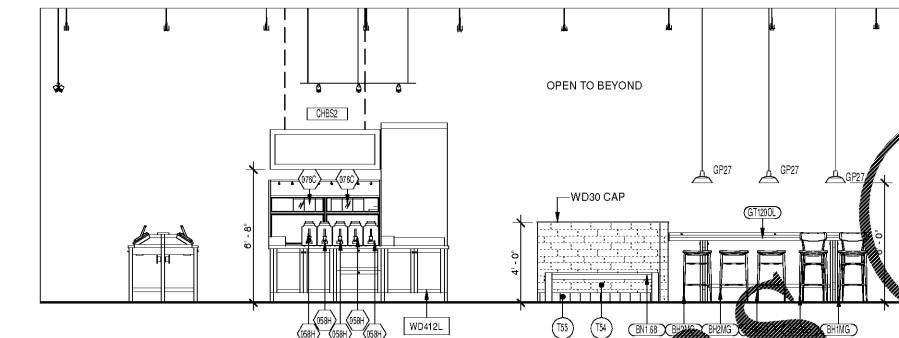
4 | DINING ELEVATION
1/4" = 1'-0"



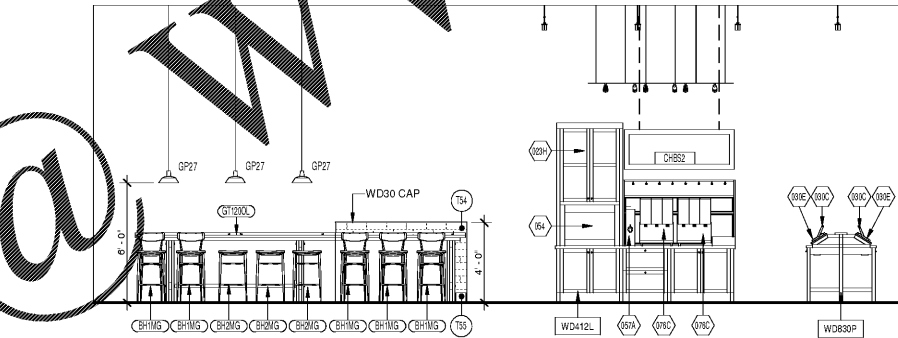
5 | DINING ELEVATION
1/4" = 1'-0"



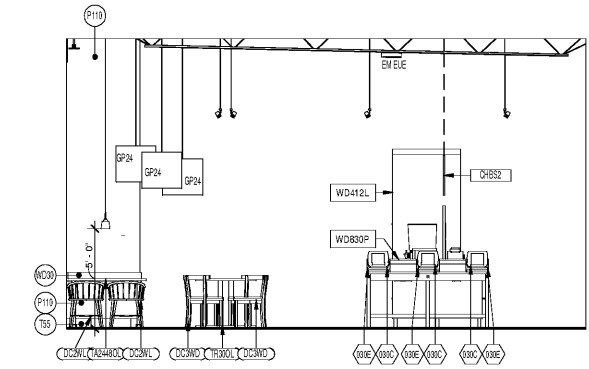
6 | DINING ELEVATION
1/4" = 1'-0"



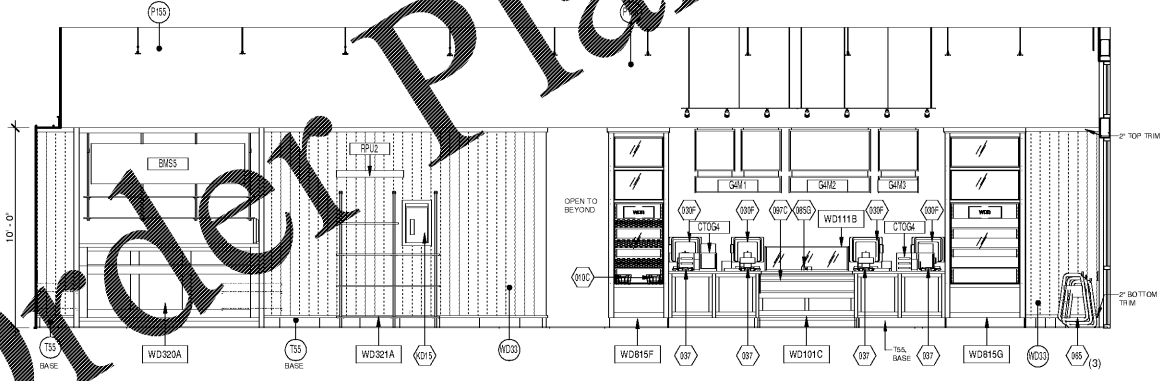
7 | DINING / HOT BEV. ELEVATION
1/4" = 1'-0"



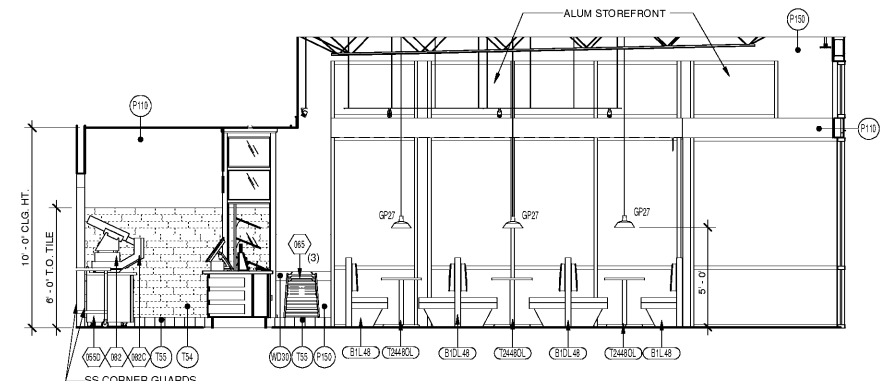
8 | DINING / COLD BEV. ELEVATION
1/4" = 1'-0"



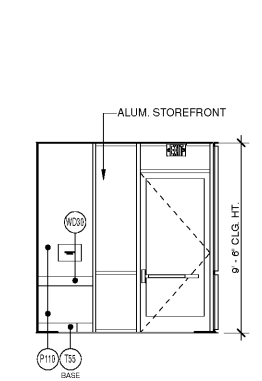
9 | DINING / KIOSK ELEVATION
1/4" = 1'-0"



10 | EXPO / QUEUING ELEVATION
1/4" = 1'-0"



11 | BAKERY SERVICE / DINING / VESTIBULE ELEVATION
1/4" = 1'-0"



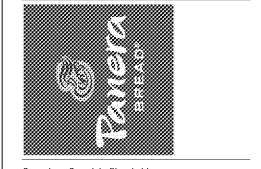
12 | VESTIBULE
1/4" = 1'-0"

Bakery-Cafe:
#6119
SYSTEM: G4 (A410)
Project Title:
p.o. box 14,2116
coral gables, florida
33114, 2116
t. 305.445.3100
f. 305.259.3986
license number: AA26002436

Professional Seal:

Project Title:

Bakery Cafe #6119
6351 MANATEE AVE W,
BRADENTON, FL 34209



Consultant Copyright Placeholder

No.	Description	Date

INTERIOR ELEVATIONS FRONT OF HOUSE

Project Number: #6119
Drawn By: MMH/NH
Issue Date: 09.30.18
DPM: J.R. DM: D.C. CPM: R.K.
A410

Order Plans @ www.ldonline.com