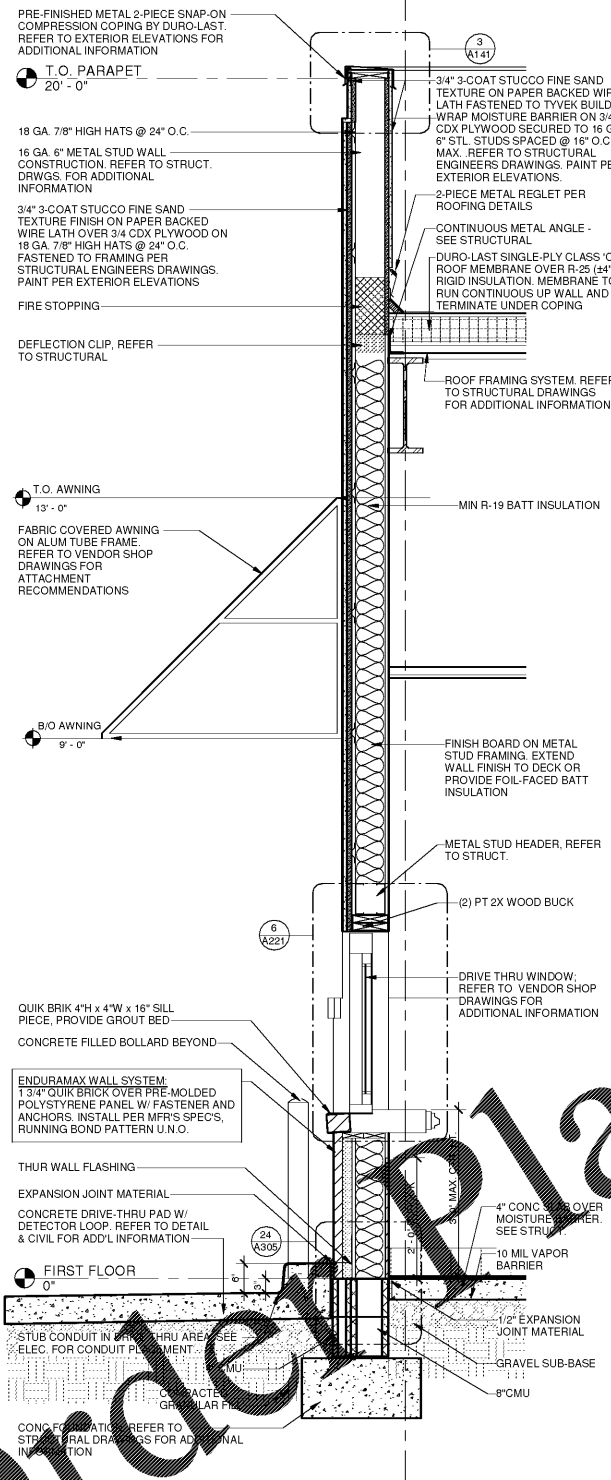
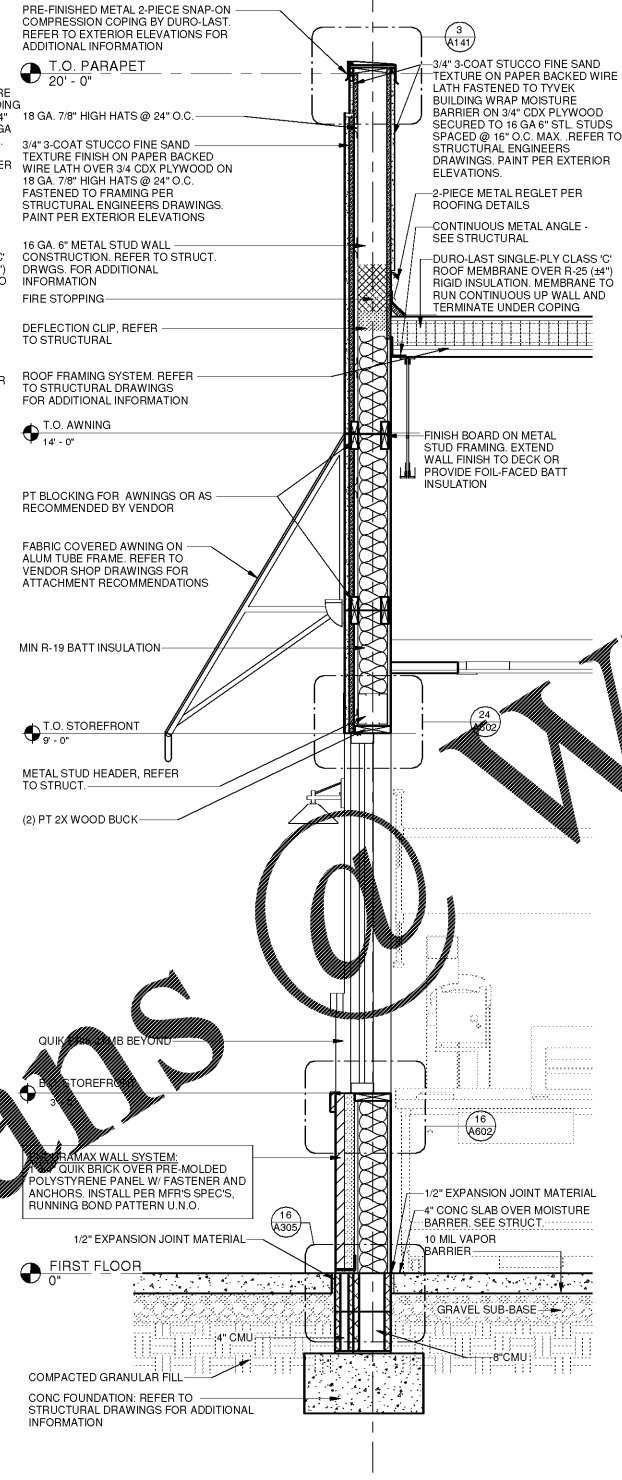


10/30/2018 10:15:39 AM

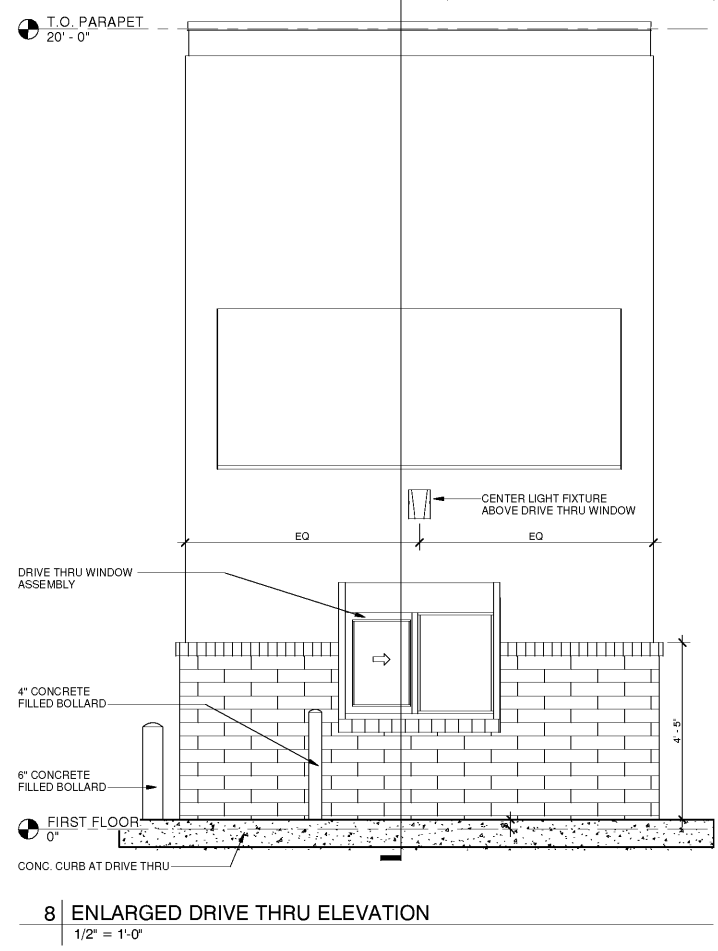
NOTE: GENERAL CONTRACTOR TO COORDINATE MOUNTING HEIGHTS OF BLOCKING FOR AWNINGS, SIGNAGE, & LIGHT FIXTURES WITH SIGNAGE VENDOR AND ELECTRICAL CONTRACTOR PRIOR TO INSTALLATION



NOTE: GENERAL CONTRACTOR TO COORDINATE MOUNTING HEIGHTS OF BLOCKING FOR AWNINGS, SIGNAGE, & LIGHT FIXTURES WITH SIGNAGE VENDOR AND ELECTRICAL CONTRACTOR PRIOR TO INSTALLATION



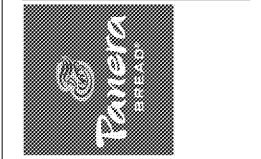
NOTE: QUICKSRY CORP DRIVE THRU WINDOW ASSEMBLY MODEL NO. SS-4035E-IP (NO#408-1210.04) WITH THRU BEAM ELECTRIC EYE BAR AND 5/8" INSULATED TEMPERED GLAZING (BRONZE TINT).
FRAME SHALL BE INSULATED AND HAVE ALUM FINISH TO MATCH STOREFRONT



Bakery-Cafe:
#6119
SYSTEM: G4 (A304)
Project Title:
Professional Seal:
architect of record: William F. Arthur
License Number: AR0012074
Project Title:
Bakery Cafe #6119
6351 MANATEE AVE W,
BRADENTON, FL 34209

Professional Seal:
architect of record: William F. Arthur
License Number: AR0012074
Project Title:

CONSTRUCTION DRAWINGS
Bakery Cafe #6119
6351 MANATEE AVE W,
BRADENTON, FL 34209



These plans and specifications are the exclusive property of WFA Design. Any reproduction, modification, distribution, and/or use of these materials (or any portion thereof) without WFA Design's prior written consent is strictly prohibited.

No.	Description	Date

WALL SECTIONS
Project Number: #6119
Sheet Number: A304
Drawn By: MMH/NH
Issue Date: 09.30.18
DPM: DM: CPM:
J.R. D.C. R.K.

Order Plans @ www.LDILine.com