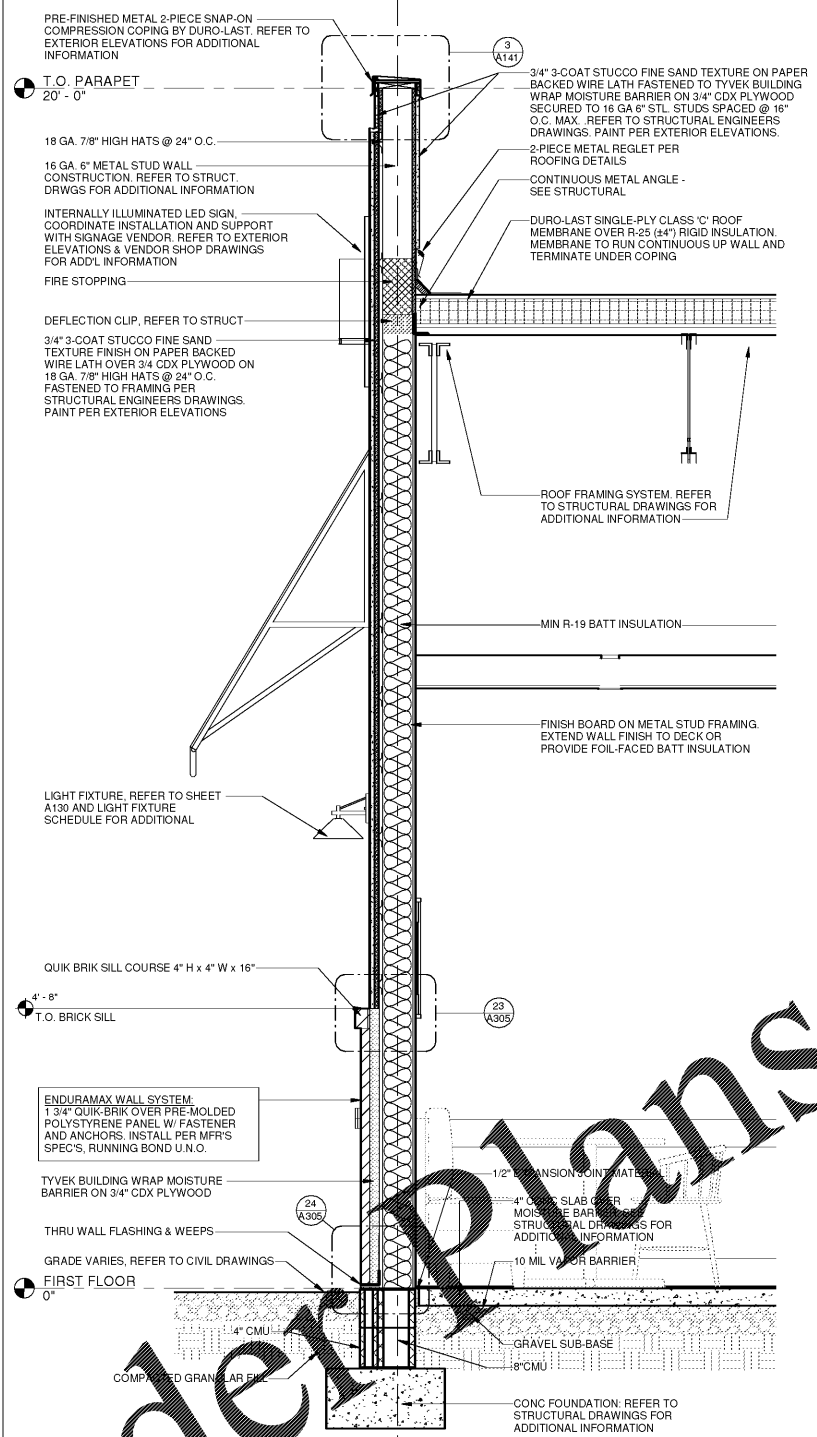


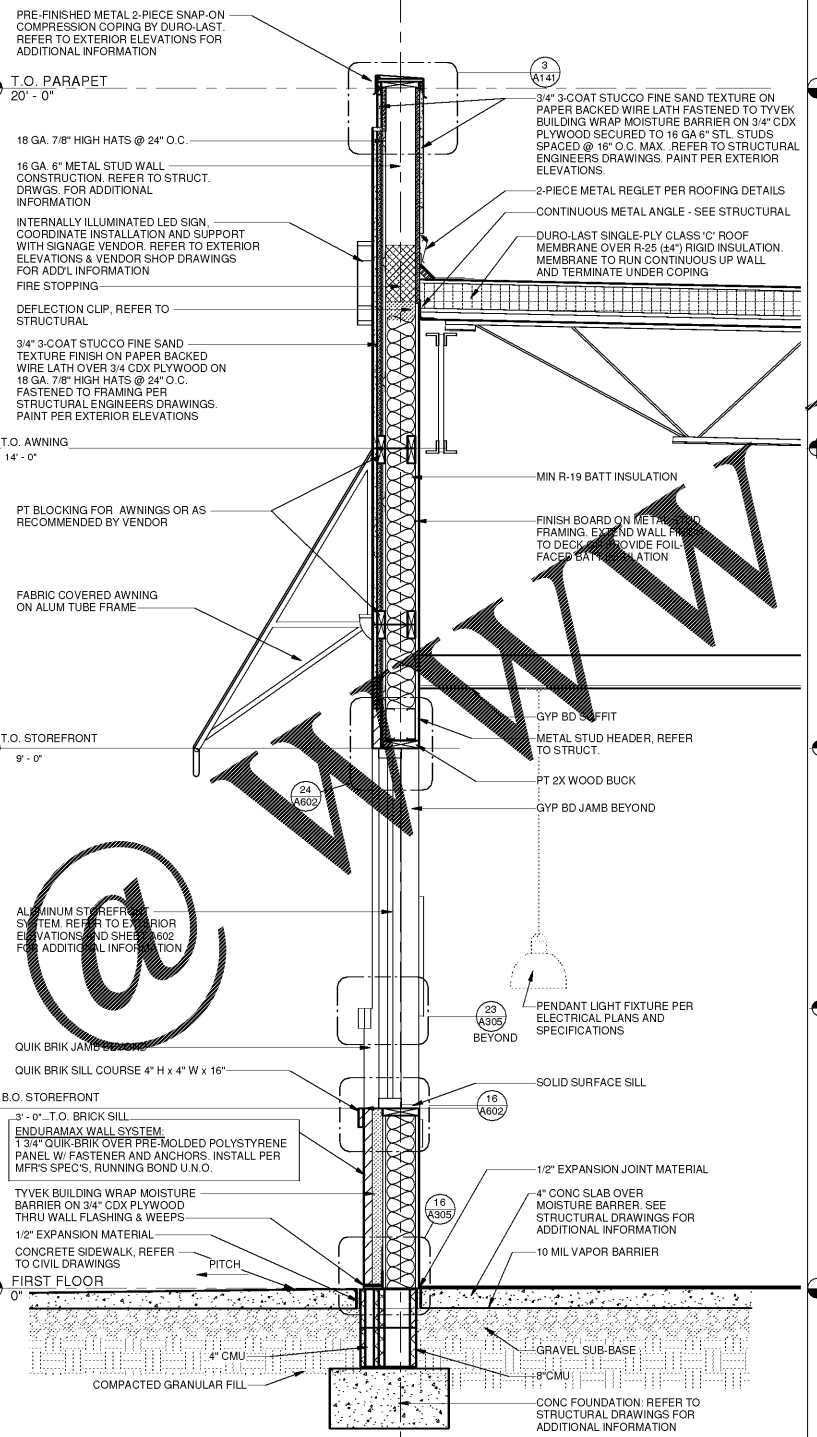
10/30/2018 10:14:56 AM

NOTE: GENERAL CONTRACTOR TO COORDINATE MOUNTING HEIGHTS OF BLOCKING FOR AWNINGS, SIGNAGE, & LIGHT FIXTURES WITH SIGNAGE VENDOR AND ELECTRICAL CONTRACTOR PRIOR TO INSTALLATION

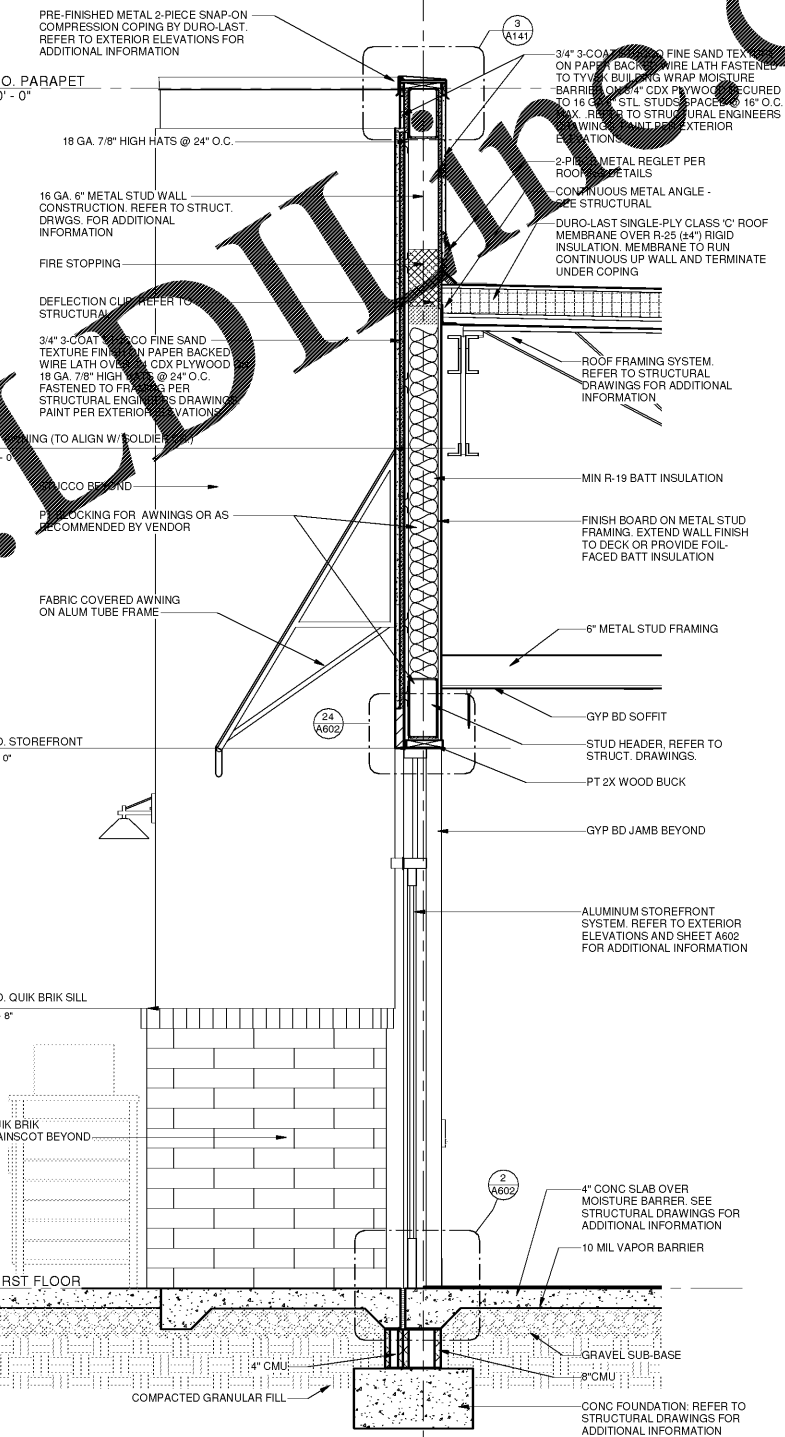


2 WALL SECTION
3/4\"/>

NOTE: GENERAL CONTRACTOR TO COORDINATE MOUNTING HEIGHTS OF BLOCKING FOR AWNINGS, SIGNAGE, & LIGHT FIXTURES WITH SIGNAGE VENDOR AND ELECTRICAL CONTRACTOR PRIOR TO INSTALLATION



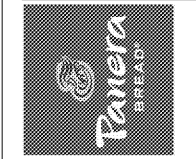
16 WALL SECTION
3/4\"/>



8 WALL SECTION
3/4\"/>

Bakery-Cafe:
#6119
SYSTEM: G4 (A141)
Project Title:
Professional Seal:
architect of record: William F. Arthur
License Number: AR0012074
Project Title:
P.O. Box 14,2116
Coral Gables, Florida
33114, 2116
T. 305.445.3100
F. 305.259.9986
license number: A29002436

CONSTRUCTION DRAWINGS
Bakery Cafe #6119
6351 MANATEE AVE W,
BRADENTON, FL 34209



These plans and specifications are the exclusive property of WFA Design. Any reproduction, modification, distribution, and/or use of these materials (in any portion thereof) without WFA Design's prior written consent is strictly prohibited.

No.	Description	Date

WALL SECTIONS
Project Number: #6119
Sheet Number: A301
Drawn By: MMH/NH
Issue Date: 09.30.18
DPM: DM: CPM:
J.R. D.C. R.K.

Order Plans

WWW.WHOCREDESIGN.COM