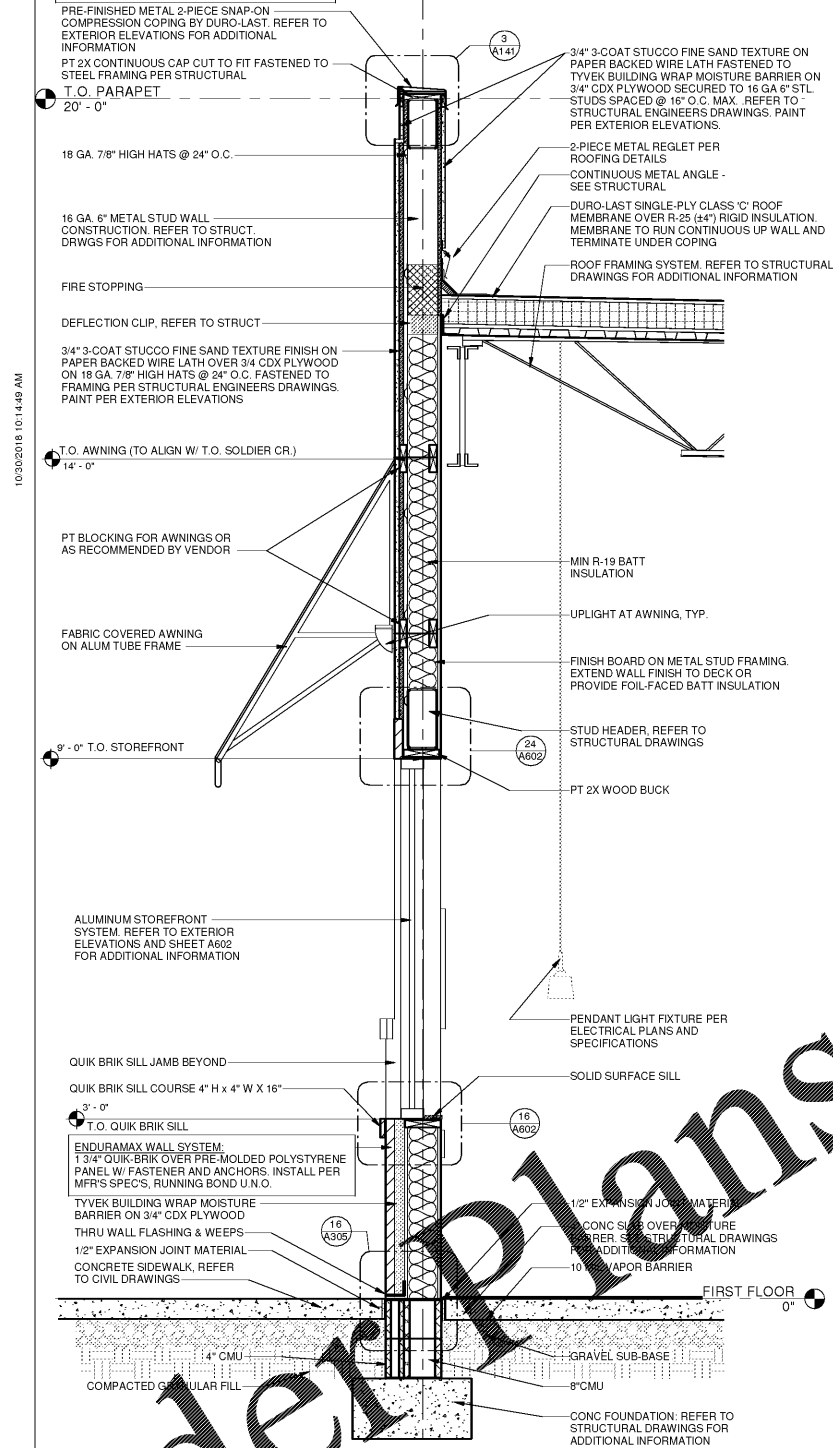
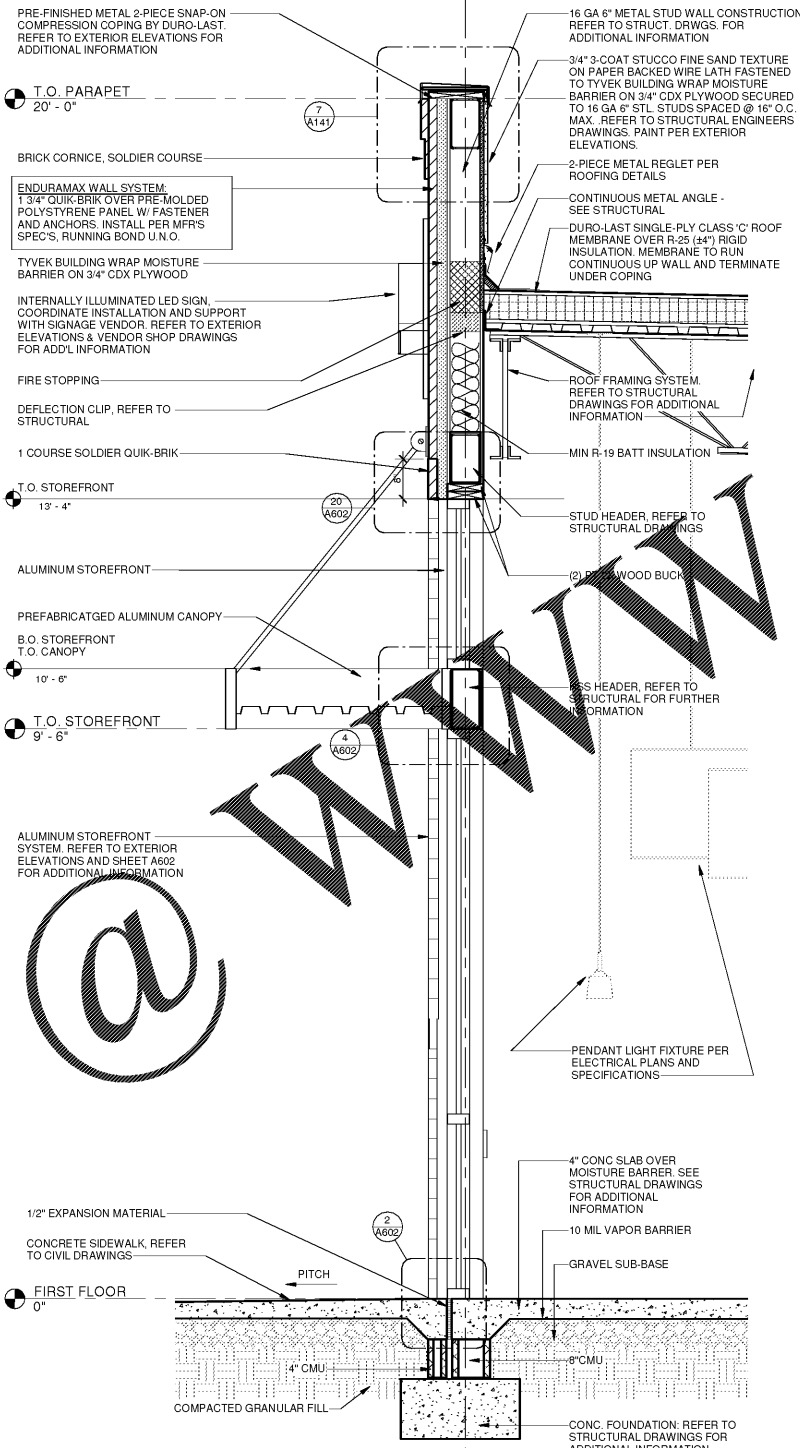


NOTE: GENERAL CONTRACTOR TO COORDINATE MOUNTING HEIGHTS OF BLOCKING FOR AWNINGS, SIGNAGE, & LIGHT FIXTURES WITH SIGNAGE VENDOR AND ELECTRICAL CONTRACTOR PRIOR TO INSTALLATION



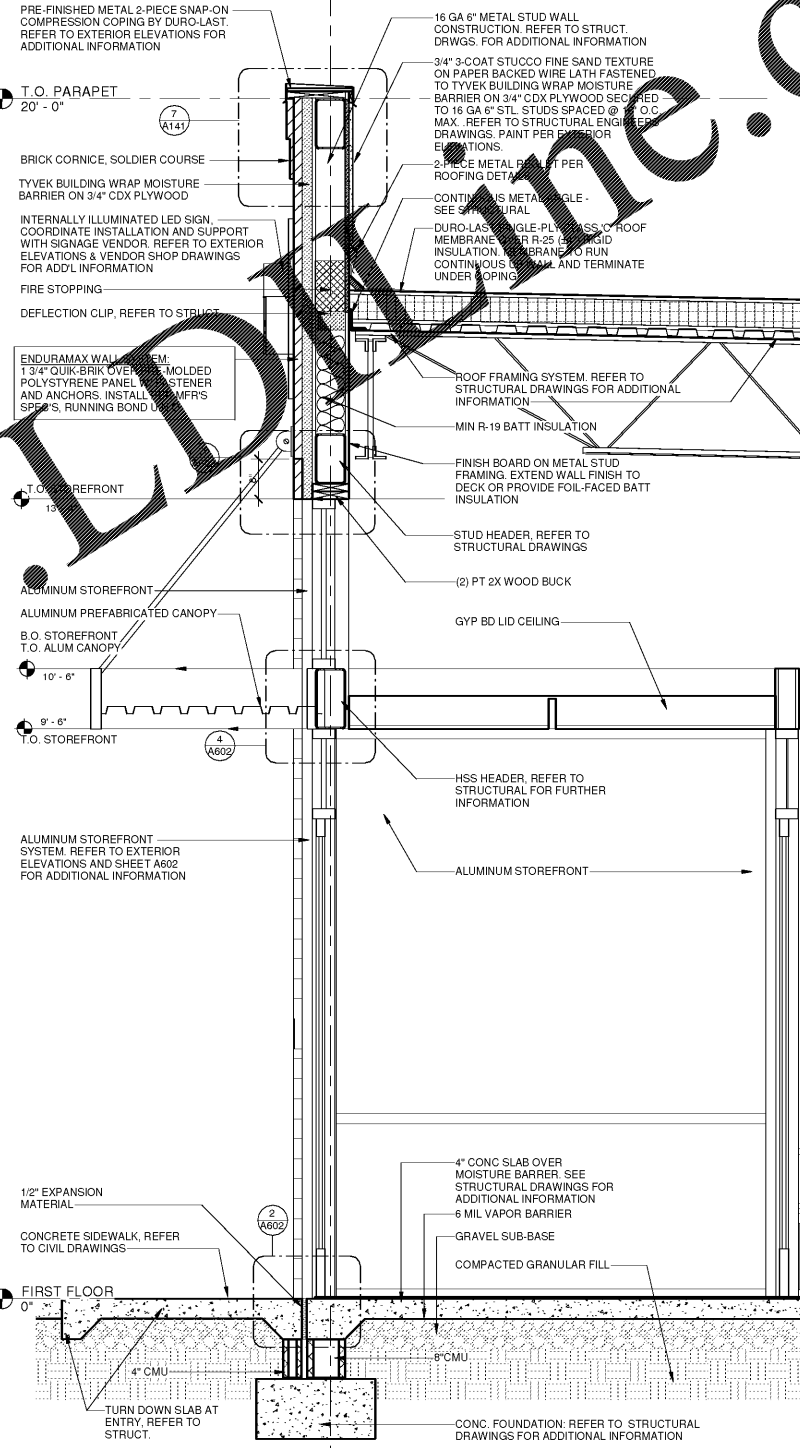
24 WALL SECTION
3/4" = 1'-0"

NOTE: GENERAL CONTRACTOR TO COORDINATE MOUNTING HEIGHTS OF BLOCKING FOR AWNINGS, SIGNAGE, & LIGHT FIXTURES WITH SIGNAGE VENDOR AND ELECTRICAL CONTRACTOR PRIOR TO INSTALLATION



16 WALL SECTION
3/4" = 1'-0"

NOTE: GENERAL CONTRACTOR TO COORDINATE MOUNTING HEIGHTS OF BLOCKING FOR AWNINGS, SIGNAGE, & LIGHT FIXTURES WITH SIGNAGE VENDOR AND ELECTRICAL CONTRACTOR PRIOR TO INSTALLATION

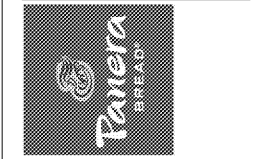


8 WALL SECTION
3/4" = 1'-0"

Bakery-Cafe:
#6119
SYSTEM: G4 (A300)
Project Location:
p.o. box 14,2116
coral gables, florida
33114,2116
t. 305.445.3100
f. 305.259.9366
license number: A226002436

Professional Seal:
architect of record: William F. Arthur
License Number: AR0012074
Project Title:

CONSTRUCTION DRAWINGS
Bakery Cafe #6119
6351 MANATEE AVE W,
BRADENTON, FL 34209



These plans and specifications are the exclusive property of WFA Design. Any reproduction, modification, distribution, and/or use of these materials (or any portion thereof) without WFA Design's prior written consent is strictly prohibited.

No.	Description	Date

WALL SECTIONS
Project Number: #6119
Sheet Number: A300
Drawn By: MMH/NH
Issue Date: 09.30.18
DPM: DM: CPM:
J.R. D.C. R.K.

Order Plans

WWW@