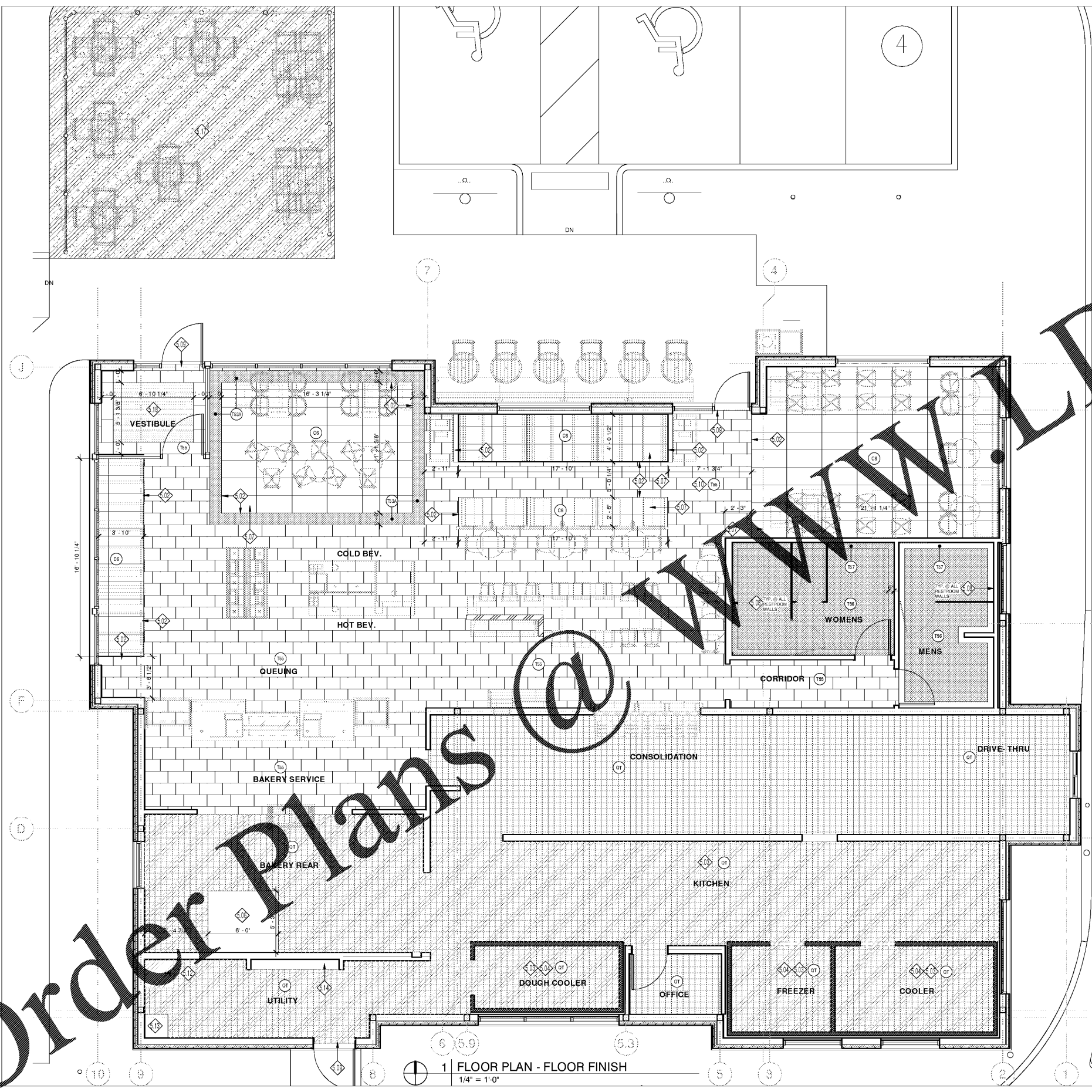


11/1/2018 3:26:59 PM

Order Plans @ WWW.LDOnline.com



1 FLOOR PLAN - FLOOR FINISH  
1/4" = 1'-0"

GENERAL NOTES:

- A. NEW FLOOR TILES ARE TO BE INSTALLED AS INDICATED ON PLAN WITH FULL TILES WHEREVER POSSIBLE. SEE FINISH SCHEDULE FOR SPECIFICATIONS.
- B. ALL FLOOR FINISHES SHALL BE INSTALLED WITH TOP EDGES LEVEL W/ ADJACENT MATERIAL TOP EDGES. CONFIRM TILE THICKNESS AS THESE MAY VARY. CONFIRM THAT NO OVERALL FLOATING OF FLOOR IS REQUIRED.
- C. COORDINATE FLOORING TRANSITIONS & BASE TILE INSTALLATION W/ MILLWORK SHOP DRAWINGS & FIELD CONDITIONS.
- D. ALL THRESHOLDS SHALL HAVE A MAX HEIGHT OF 1/2" ABOVE EXISTING CONCRETE SLAB &/OR INTERIOR FINISHES.
- E. SEE FINISH SCHEDULE ON SHEET A800 FOR SPECS OF ALL FLOOR COVERINGS.
- F. TILE TRANSITION BETWEEN ROOMS TO BE CENTERED ON DOOR FRAME.
- G. SEE PLUMBING DRAWINGS FOR DIMENSIONS & LOCATIONS OF FLOOR DRAINS & FLOOR SINKS.

KEYED NOTES

- 5.03 CARPET W/ SCHLUTER-SCHIENE SATIN ALUMINUM TRANSITION STRIP @ ALL TILE-CARPET. INSTALL CARPET FLUSH W/ TILE USE JOHNSONITE TILE-TO-CARPET TRANSITION TO LEVEL CARPET.
- 5.04 USE EPOXY W/ GROUT THROUGH OUT BOH AREA, INDICATED BY HATCHED AREA.
- 5.04 INSTALL QUARRY TILE IN COOLER/FREEZER. FREEZER TO HAVE RECESSED, INSULATED SLAB. REFER TO DETAIL ON SHEET A520
- 5.06 FLOAT 1/2" MARINITE STRUCTURAL, INCOMBUSTIBLE INSULATION UNDER RACK OVEN. INSET SHEETS 2" INSIDE OVEN FRAME. LEAVE 1/8" CLEARANCE AT EDGE OF TILE. SEAL GAP WITH HIGH TEMPERATURE CAULK. SEE SHEET A600 FOR VENDOR CONTACT INFO.
- 5.07 START FLOOR TILE PATTERN THIS LOCATION
- 5.08 PROVIDE SCHLUTER COVE TILE BASE AT ALL TILE LOCATIONS UNLESS NOTED OTHERWISE. REFER TO FLOORING DETAILS/A520 FOR FURTHER INFORMATION.
- 5.09 DOOR THRESHOLD MAX. 1/2" ABOVE EXTERIOR CONCRETE SLAB. SEE DETAIL SHEET A601.
- 5.10 TILE T55 TO BE INSTALLED IN RANDOM PLANK PATTERN W/ FULL TILES AS SHOWN.
- 5.12 WATER HEATER LOCATION TO BE LOCATED ON STAND. SEE DETAIL ON SHEET A520
- 5.13 NO TILE AT MOP SINK. SEE EQUIPMENT AND PLUMBING SHEETS FOR FURTHER INFORMATION.
- 5.14 6" CONCRETE CURB FOR CPI PANEL. SEE DETAIL SHEET A500.
- 5.17 CONCRETE PATIO BY PANERA GC. BROOM FINISH, BRICKFORM LIQUID INTEGRAL STAIN, COLOR: LC-2275 PORCELAIN GRAY. SEALED WITH MATTE, NON-SLIP FINISH. SEE SHEET A140 FOR FURTHER INFORMATION.
- 5.18 RECESSED WALK-OFF MAT, MFR. IMPACT SPECIALTIES, MODEL: HELIX Z2. COLOR: GRAPHITE. REFER TO STRUCTURAL FOR RECESS FLOOR INFORMATION. NOTE: PLACE 24" TILE LENGTH ON EACH SIDE OF RECESSED MAT.

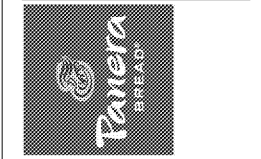
FLOOR FINISH LEGEND

- T55 - 1/3 BOND PATTERN
- QT - 6X6 QUARRY TILE
- T56 - 1/3 BOND PATTERN RESTROOM MOSAIC FIELD TILE
- T57 - VERTICAL STACKED MOSAIC RESTROOM TILE 6" WIDE BORDER.
- C6 - MONOLITHIC
- SC-7 - COLORED CONCRETE. SEE NOTE 5.17 THIS SHEET & FINISH SCHEDULE.

Bakery-Cafe:  
**#6119**  
 SYSTEM: G4 (A601)  
 Project Title:  
 p.o. box 14,2116  
 coral gables, florida  
 33114, 2116  
 v. 305.445.3100  
 f. 305.259.3986  
 license number: AA26002436

Professional Seal:  
 architect of record: William F. Arthur  
 License Number: AR0012074  
 Project Title:

CONSTRUCTION DRAWINGS  
**Bakery Cafe #6119**  
 6351 MANATEE AVE W,  
 BRADENTON, FL 34209



These plans and specifications are the exclusive property of WFA Design. Any reproduction, modification, distribution, and/or use of these materials (or any portion thereof) without WFA Design's prior written consent is strictly prohibited.

No.	Description	Date

**FLOOR FINISH PLAN**  
 Project Number: **#6119** Sheet Number:  
 Drawn By: **MMH/NH**  
 Issue Date: **09.30.18**  
 DPM: DM: CPM:  
 J.R. D.C. R.K.  
**A121**