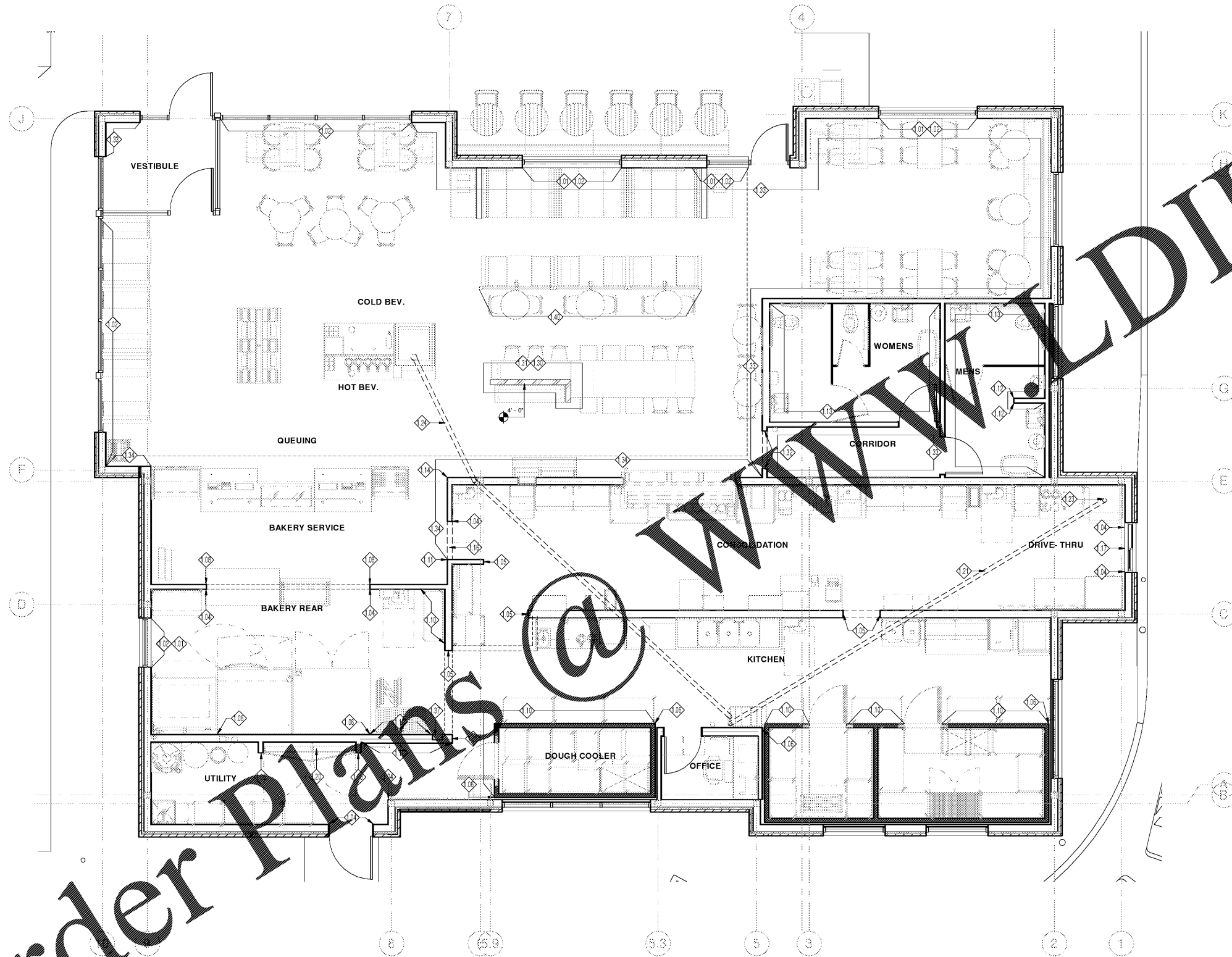


11/1/2018 3:26:03 PM



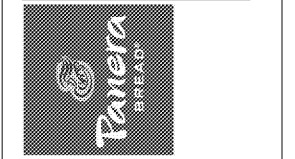
KEYED NOTES

- 1.01 SOLID SURFACE SILL PROVIDED BY CASEWORK SUPPLIER, INSTALLED BY GC. DIMENSIONS TO BE FIELD VERIFIED.
- 1.02 ROLLER SHADES TO BE INSTALLED - FULL WIDTH OF WINDOW OPENINGS FROM CEILING TO CLOSEST HORIZONTAL MULLION OR 30" AFF (TABLE HEIGHT). SEE FINISH NOTES FOR SPECIFICATION.
- 1.04 STAINLESS STEEL CORNER GUARD (16 GA - 1 1/2" RETURNS). INSTALL OVER TILE FROM FLOOR TO 8'-0" A.F.F. B.O.H. 7'-0" F.O.H. OR UNDER OF BULKHEAD ARCH. (SUPPLIED & INSTALLED BY G.C.) STOP QUARRY TILE BASE @ BACK EDGE OF CORNER GUARD W/ BULL NOSE EDGE.
- 1.05 STAINLESS STEEL END CAP (16 GA - 1 1/2" RETURNS). INSTALL OVER TILE FROM FLOOR TO 8'-0" A.F.F. B.O.H. 7'-0" F.O.H. OR UNDER OF BULKHEAD ARCH. (SUPPLIED & INSTALLED BY G.C.) STOP QUARRY TILE BASE @ BACK EDGE OF CORNER GUARD W/ BULL NOSE EDGE.
- 1.06 STAINLESS STEEL CLOSURE PLATE (16 GA - 1 1/2" RETURNS). INSTALL OVER TILE FROM FLOOR TO 8'-0" A.F.F. B.O.H. 7'-0" F.O.H. OR UNDER OF BULKHEAD ARCH. (SUPPLIED & INSTALLED BY G.C.) STOP QUARRY TILE BASE @ BACK EDGE OF CORNER GUARD W/ BULL NOSE EDGE.
- 1.08 GC TO INSTALL STAINLESS STEEL CORNER GUARD (16 GA - 1 1/2" RETURNS). INSTALL OVER TILE TO 4" A.F.F.
- 1.10 BOSTON-BUMPER CORNER INSTALL @ 30" & 60" BACK OF HOUSE. INTERIOR FLUSH REFER TO WATER MAINS END FOR SPEC.
- 1.11 BULLNOSE TILE @ EXPOSURE JAMB AND UNDER SIDE CORNERS, AND UNDER SIDE OF ARCH. BOTH SIDES OF OPENING.
- 1.12 SCHEDULE 40 JOLLY TRIM. ANGLE POLISHED STAINLESS. INSTALL ALONG JOINT OF TILE AND UNDER CORNERS.
- 1.13 GC TO PROVIDE BULLNOSE TRIM AT TOP OF TILE.
- 1.14 WOOD TRIM CORNER TO MATCH WD33 BY MILLWORK VENDOR. GC TO INSTALL OVER FINISH FROM FLOOR TO CEILING OR UNDERSIDE OF BULKHEAD. SEE SPECIFICATIONS FOR FURTHER INFORMATION.
- 1.16 PROVIDE WOOD TRIM AT OPENING JAMBS AND UNDERSIDE OF BULKHEAD. WOOD TO MATCH WD33 TONGUE & GROOVE PLANK.
- 1.17 18 GA STAINLESS STEEL INFILL PANEL AT JAMB AND HEAD OF DRIVE-THRU WINDOW. REFER TO SHEET A221
- CPI PANEL HEAD/BASE DETAIL INDICATED ON DETAIL SHEET A500.
- 21 6" PVC SODA CONDUIT LINE BY GC. FROM BAG-N-BOX TO SODA MACHINE WITH SWEEPS. SEE EQUIPMENT AND PLUMBING DWGS. AND DETAIL ON SHEET A500.
- 22 SYRUP LINE BUNDLE TO DROP THROUGH CEILING. SEE DETAIL ON SHEET A500
- 24 6" PVC SODA CONDUIT LINE BY GC TO RUN UNDER SLAB FROM BAG-N-BOX TO SODA MACHINE WITH SWEEPS. SEE EQUIPMENT AND PLUMBING DWGS.
- 30 PARTIAL-HEIGHT PARTITION BY GC. SEE INTERIOR ELEVATIONS AND SHEET A101 FOR FURTHER INFORMATION.
- 31 INSTALL 1X SOLID WD30 WOOD CAP. REFER TO FINISH PLAN & INTERIOR ELEVATIONS FOR FURTHER INFORMATION.
- 32 INSTALL WD30 VERTICAL WOOD TRIM PIECE ALONG END OF WALL. REFER TO FINISH PLAN, INTERIOR ELEVATIONS, AND SHEET A501 FOR FURTHER INFORMATION.
- 33 INSTALL WD30 CHAIR RAIL. SEE DETAIL SHEET A501 FOR FURTHER INFORMATION AND INTERIOR ELEVATIONS FOR PLACEMENT. NOTE: AT BOOTHS THAT ARE PERPENDICULAR TO WALL WITH CHAIR RAIL. CHAIR RAIL TO BE CUT BETWEEN BOOTH BACKS SO BOOTH IS FLUSH TO WALL.
- 34 WD33 TONGUE & GROOVE PANELING INSTALLED VERTICALLY FULL HEIGHT OR TO UNDERSIDE OF SOFFIT BY MILLWORK VENDOR
- 37 PHONE BOX, WD807. REFER TO DETAIL B/A500.
- 40 DINING SCREEN WALL FURNITURE BY MILLWORK VENDOR INSTALLED BY GC. REFER TO SHEET A510 FOR SUPPORT TO STRUCTURE ABOVE DETAIL AND EQUIPMENT PLAN FOR SCREEN PLACEMENT LOCATION

Bakery-Cafe:
#6119
 SYSTEM: G4 (A101)
 Project Title:
 p.o. box 14,2116
 coral gables, florida
 33114,2116
 v. 305.445.3100
 f. 305.259.3986
 license number: AA26002436

Professional Seal:
 architect of record: William F. Arthur
 License Number: AR0012074
 Project Title:

Bakery Cafe #6119
 6351 MANATEE AVE W,
 BRADENTON, FL 34209



These plans and specifications are the exclusive property of WFA Design. Any reproduction, modification, distribution, and/or use of these materials (or any portion thereof) without WFA Design's prior written consent is strictly prohibited.

No.	Description	Date

FLOOR PLAN - KEYED NOTES
 Project Number: #6119
 Sheet Number: **A102**
 Drawn By: MMH/NH
 Issue Date: 09.30.18
 DPM: DM: CPM:
 J.R. D.C. R.K.

Order Plans @

1 FLOOR PLAN - KEYED NOTES
 1/4" = 1'-0"