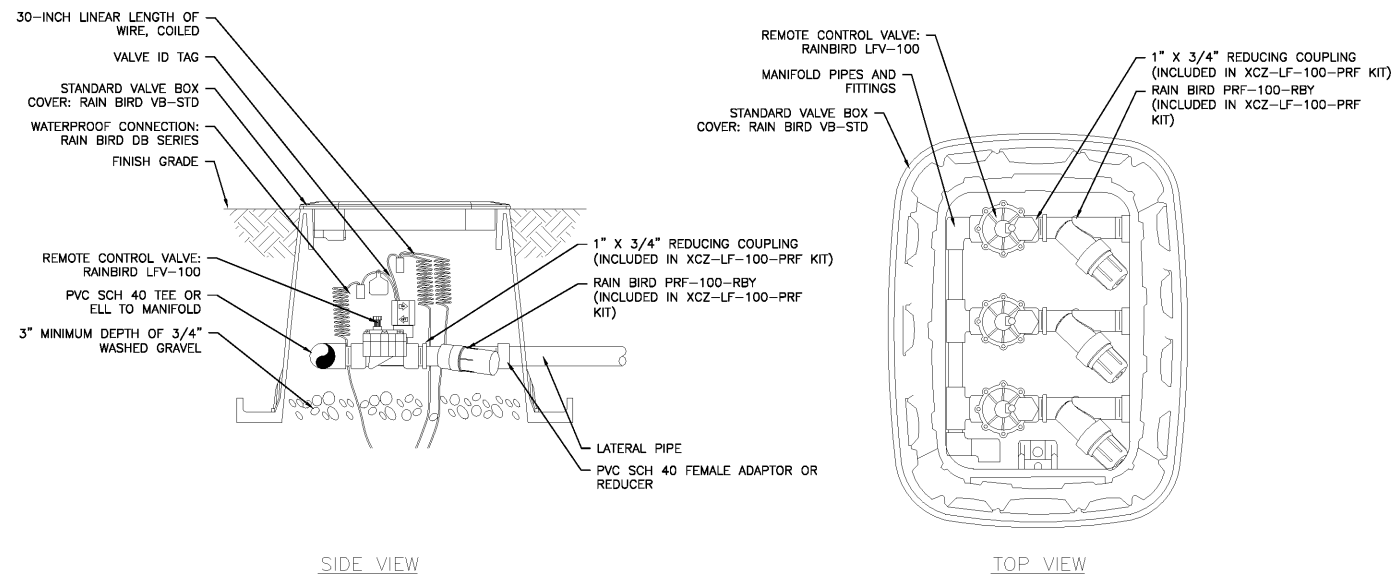


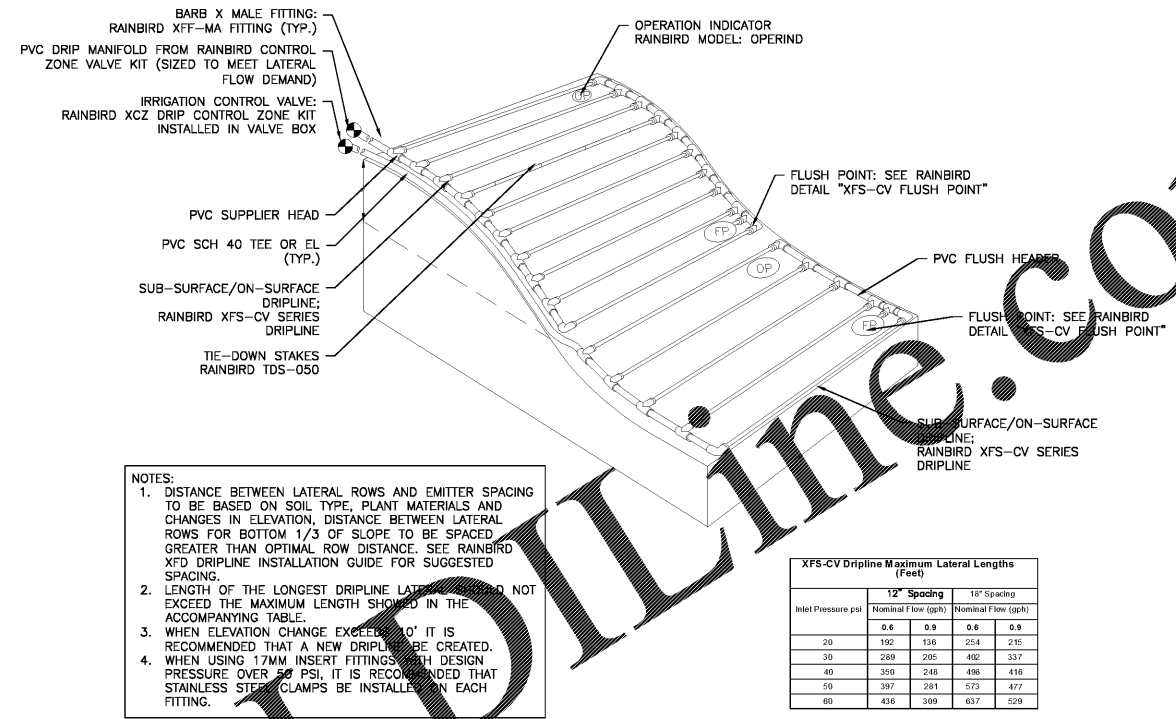
DISCLAIMER:
This drawing is the property of the above named Professional Engineer and is not to be used for any purpose other than the specific project and site indicated herein, and cannot be reproduced in any manner without the express written permission from the Professional Engineer.

ISSUE/REVISION RECORD

DATE	DESCRIPTION
08-31-2018	INITIAL PERMIT SET
10-25-2018	CITY COMMENTS
11-09-2018	CITY COMMENTS



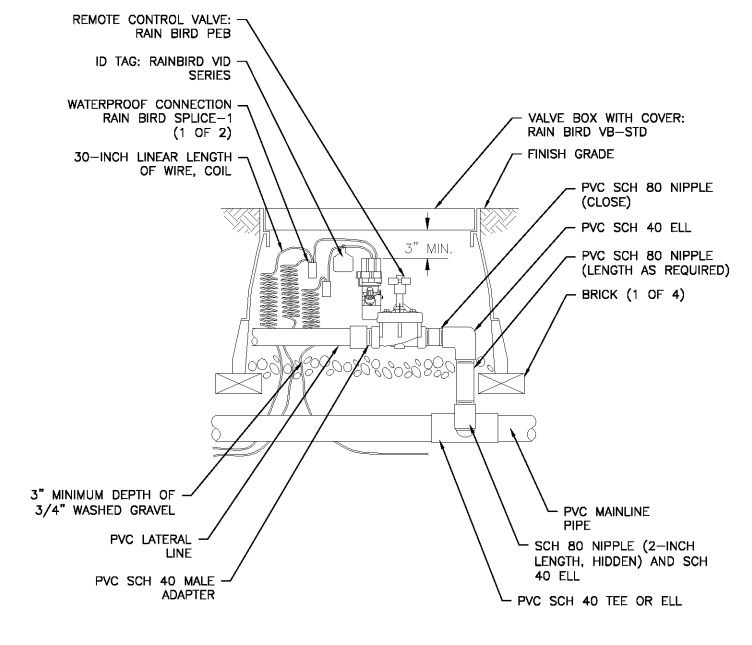
1 X CZ-LF-100-PRF 1" CONTROL ZONE KIT
SCALE: NTS



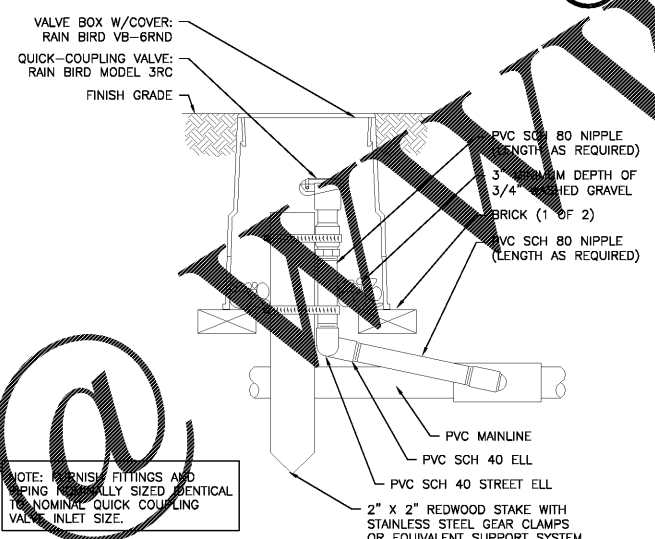
NOTES:
1. DISTANCE BETWEEN LATERAL ROWS AND EMITTER SPACING TO BE BASED ON SOIL TYPE, PLANT MATERIALS AND CHANGES IN ELEVATION, DISTANCE BETWEEN LATERAL ROWS FOR BOTTOM 1/3 OF SLOPE TO BE SPACED GREATER THAN OPTIMAL ROW DISTANCE. SEE RAINBIRD XFD DRIPLINE INSTALLATION GUIDE FOR SUGGESTED SPACING.
2. LENGTH OF THE LONGEST DRIPLINE LATERAL SHOULD NOT EXCEED THE MAXIMUM LENGTH SHOWN IN THE ACCOMPANYING TABLE.
3. WHEN ELEVATION CHANGE EXCEEDS 10' IT IS RECOMMENDED THAT A NEW DRIPLINE BE CREATED.
4. WHEN USING 1/2" M INSERT FITTINGS WITH DESIGN PRESSURE OVER 50 PSI, IT IS RECOMMENDED THAT STAINLESS STEEL CLAMPS BE INSTALLED ON EACH FITTING.

XFS-CV Dripline Maximum Lateral Lengths (Feet)

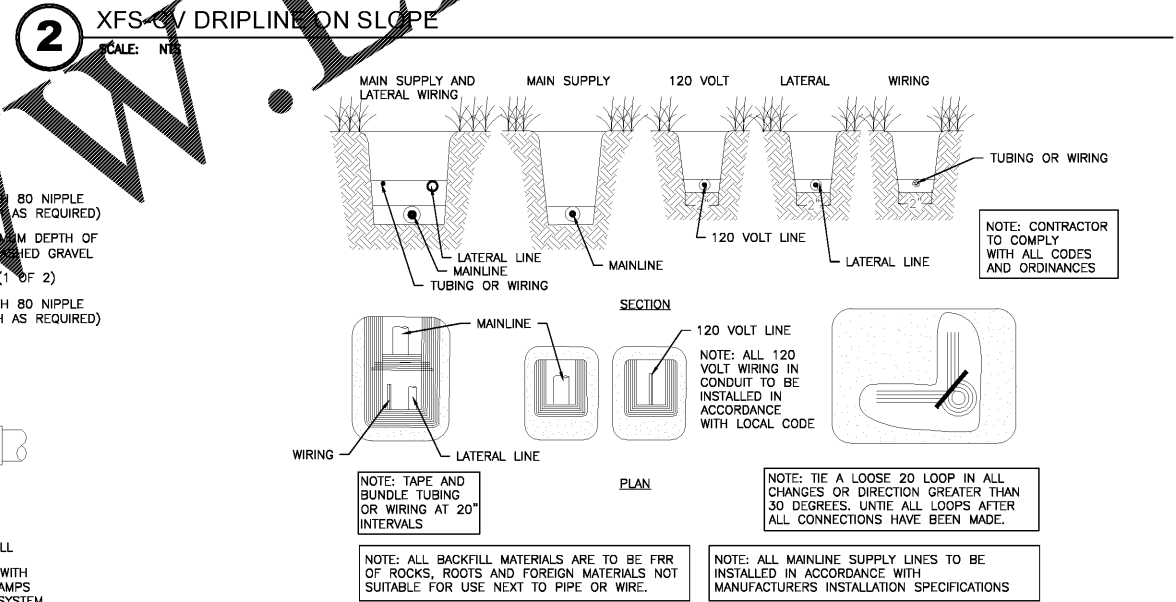
Inlet Pressure psi	12" Spacing		18" Spacing	
	Nominal Flow (gph)	Nominal Flow (gph)	Nominal Flow (gph)	Nominal Flow (gph)
20	0.8	0.9	0.8	0.9
30	192	205	214	237
40	289	248	496	416
50	387	281	573	477
60	436	309	637	529



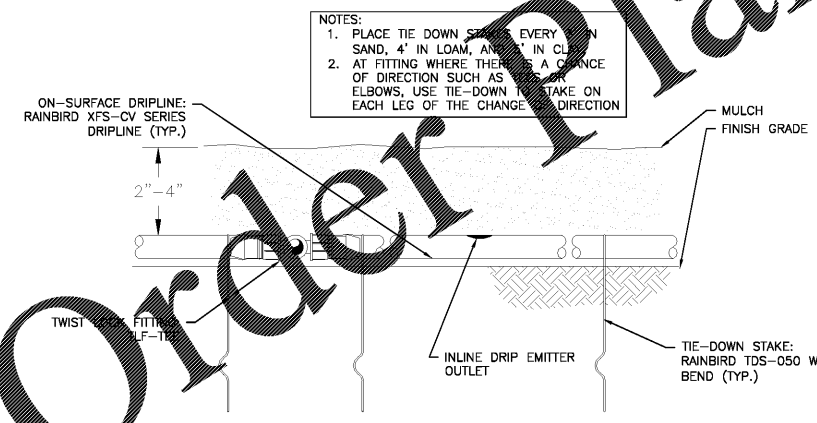
3 ELECTRIC REMOTE CONTROL VALVE
SCALE: NTS



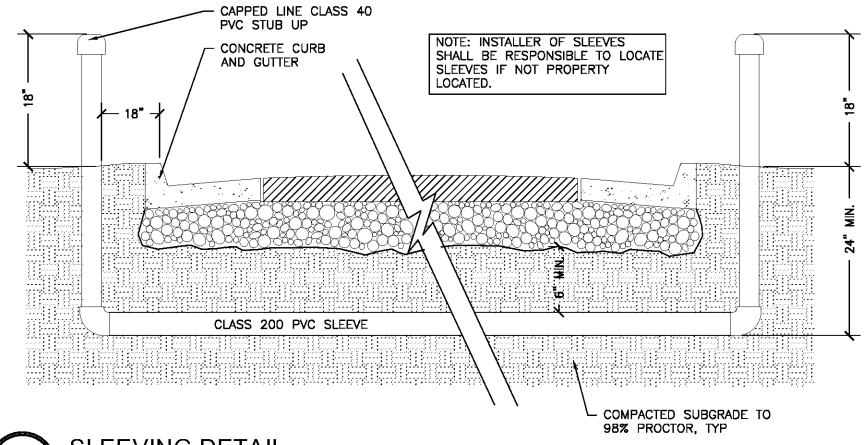
4 QUICK COUPLING VALVE
SCALE: NTS



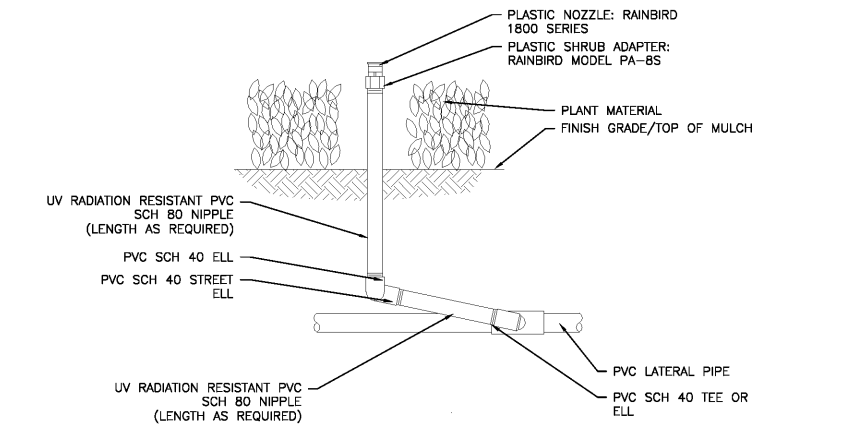
5 TRENCHING DETAIL
SCALE: NTS



6 XFS-CV DRIPLINE
SCALE: NTS



7 SLEEVING DETAIL
SCALE: 1"=1'-0"



8 BUBBLER WITH SWING JOINT
SCALE: NTS

PROFESSIONAL SEAL

PROFESSIONAL IN CHARGE
JOHN NOURZAD
PROJECT MANAGER
QUALITY CONTROL
CHARLES J. BEADLES
DRAWN BY
ALEX MADDOX

PROJECT
PANERA BREAD

ADDRESS
BRADENTON FLORIDA
6351 MANATEE AVENUE WEST

CLIENT
Panera BREAD

PROJECT NUMBER
201807580

SHEET TITLE
IRRIGATION DETAILS

SHEET NUMBER
I-1.1

Order Plans