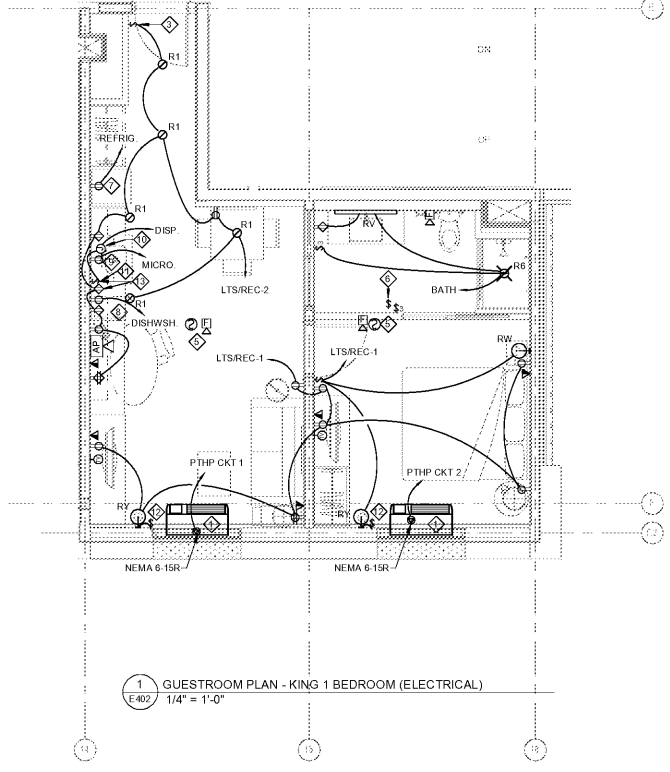


ELECTRICAL GENERAL NOTES:

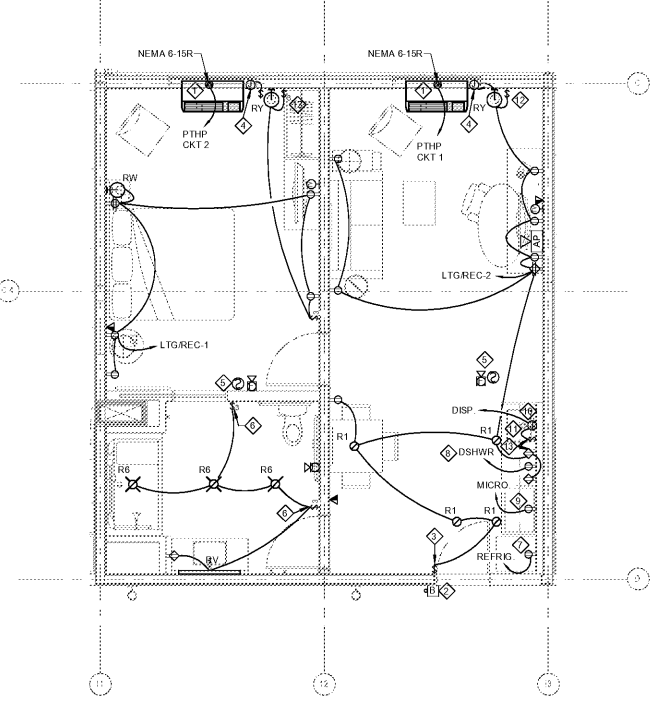
- PROJECT DESIGN IS BASED UPON THE 2014 EDITION OF THE NATIONAL ELECTRICAL CODE.
- REFER TO ELECTRICAL FLOOR PLANS FOR CIRCUITING INFORMATION.
- REFER TO ARCHITECTURAL PLANS FOR DIMENSIONS AND MOUNTING HEIGHT FOR ELECTRICAL EQUIPMENT AND LIGHT FIXTURES.
- COORDINATE RESTROOM RECEPTACLE AND SWITCH ROUGH-INS SUCH THAT THEY DO NOT INTERFERE WITH MIRROR, BACKSLASH, OR TOWEL RACK.

ELECTRICAL KEY NOTES:

- PROVIDE JUNCTION BOX FOR PTHP UNIT. COORDINATE EXACT REQUIREMENTS AND RECEPTACLE CONFIGURATION WITH EQUIPMENT INSTALLED.
- REFER TO ARCHITECTURAL PLANS FOR HEARING IMPAIRED ROOMS. SYSTEMS SHALL INCLUDE: (a) EDWARDS HIGH VOLTAGE PUSH BUTTON NO. 821 MOUNTED ON EDWARDS NO. 140 1" STAINLESS STEEL PUSH BUTTON PLATE, 44" AFF. (b) EDWARDS DOME TYPE SIGNALING STATION NO. 7641-1N5, 80" AFF. (c) A SINGLE POLE FLUSH MOUNTED WALL SWITCH TO DEACTIVATE THE DOOR INDICATOR.
- PROVIDE A MASTER CONTROL SWITCH TO CONTROL ALL GUEST ROOM LIGHTS AND SWITCHED RECEPTACLES.
- PROVIDE JUNCTION BOX FOR MOTORIZED SHADE. CONNECT TO NEAREST RECEPTACLE CIRCUIT. COORDINATE EXACT REQUIREMENTS WITH EQUIPMENT INSTALLED.
- PROVIDE SINGLE STATION SMOKE DETECTOR POWERED BY 1-1/2 HOUR BATTERY BATTERIES. ELECTRICAL SYSTEM WITH 1-1/2 HOUR BATTERY BACKUP.
- IN BATHROOM LOCATIONS ONLY, LIGHT SWITCH EQUIPPED WITH NIGHT LIGHT. MAINTAIN 2" CLEARANCE FROM ALL OPEN EDGES. MOUNTED SO TOP OF SWITCH IS 48" MAX AFF.
- DEDICATED CIRCUIT FOR REFRIG. REFER TO ARCHITECTURAL ELEVATIONS FOR EXACT DEVICE MOUNTING HEIGHTS AND LOCATIONS.
- DEDICATED CIRCUIT FOR DISHWASH. REFER TO ARCHITECTURAL ELEVATIONS FOR EXACT DEVICE MOUNTING HEIGHTS AND LOCATIONS.
- DEDICATED CIRCUIT FOR DSHWR. REFER TO ARCHITECTURAL ELEVATIONS FOR EXACT DEVICE MOUNTING HEIGHTS AND LOCATIONS.
- DEDICATED CIRCUIT FOR GARBAGE DISPOSAL. REFER TO ARCHITECTURAL ELEVATIONS FOR EXACT MOUNTING HEIGHTS AND LOCATIONS.
- SWITCH CONTROLLING GARBAGE DISPOSAL.
- SWITCH ON ADJACENT WALL SCONCE.
- RECEPTACLE AND SWITCH SHALL BE INSTALLED IN DOUBLE GANG BOX UNDER COMMON FACEPLATE ABOVE COUNTER TOP.



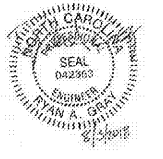
1 GUESTROOM PLAN - KING 1 BEDROOM (ELECTRICAL)
1/4" = 1'-0"



2 GUESTROOM PLAN - KING 1 BEDROOM ADA (ELECTRICAL)
1/4" = 1'-0"

mcmilian
pazdan
smith
ARCHITECTURE

CONSULT LOG
DEVITA
ATLANTA CHARLOTTE GREENVILLE
877.4.DEVITA
devita.com
Project: 17239
NC State License # C-0819
Checked By: RAG



WINDSOR AUGHTRY
HOME2 ASHEVILLE
380 AIRPORT RD.
ASHEVILLE, NC 28704

SHEET ISSUE
07/30/18
FOR CONSTRUCTION

Revisions		
Number	Description	Date

PRINCIPAL IN CHARGE
PROJECT ARCHITECT
DRAWN BY
SHEET TITLE
KING 1 BEDROOM -
LIGHTING & POWER

SHEET NO. PRJ NO.
E402 017378.00

Order Plans @ www.LDILLINE.com