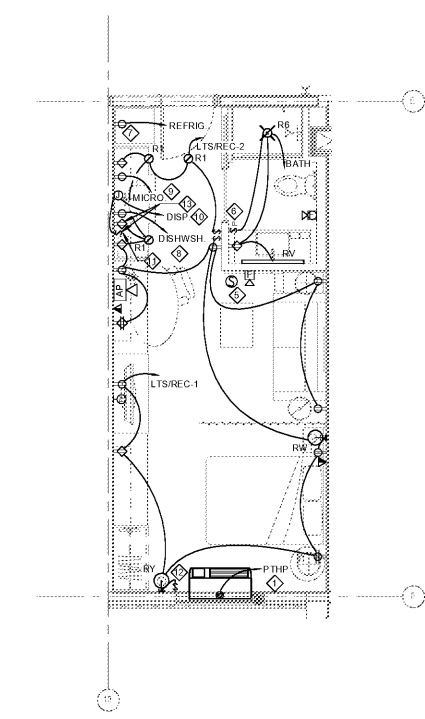
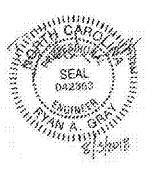


- GENERAL NOTES:**
- A. PROJECT DESIGN IS BASED UPON THE 2014 EDITION OF THE NATIONAL ELECTRICAL CODE.
 - B. REFER TO ELECTRICAL FLOOR PLANS FOR CIRCUITING INFORMATION.
 - C. REFER TO ARCHITECTURAL PLANS FOR DIMENSIONS AND MOUNTING HEIGHT FOR ELECTRICAL EQUIPMENT AND LIGHT FIXTURES.
 - D. COORDINATE RESTROOM RECEPTACLE AND SWITCH ROUGH-INS SUCH THAT THEY DO NOT INTERFERE WITH MIRROR, BACKSPLASH, OR TOWEL RACK.

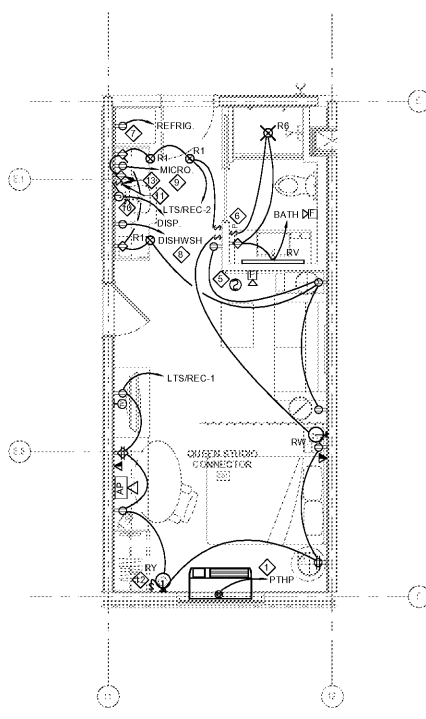
- KEYED NOTES:**
1. PROVIDE JUNCTION BOX FOR PTAC UNIT AND SHALL BE CONCEALED. COORDINATE EXACT REQUIREMENTS AND RECEPTACLE CONFIGURATION WITH EQUIPMENT INSTALLED.
 2. REFER TO ARCHITECTURAL PLANS FOR HEARING IMPAIRED ROOMS. SYSTEMS SHALL INCLUDE: (a) EDWARDS HIGH VOLTAGE PUSH BUTTON NO. 821 MOUNTED ON EDWARDS NO. 148-1 STAINLESS STEEL PUSH BUTTON PLATE, 4" AFF. (b) EDWARDS DOME TYPE SIGNALING STATION NO. 2641-INS. 80" AFF. (c) A SINGLE POLE FLUSH MOUNTED WALL SWITCH TO DEACTIVATE THE DOOR INDICATOR.
 3. PROVIDE A MASTER CONTROL SWITCH TO CONTROL ALL GUEST ROOM LIGHTS AND SWITCHED RECEPTACLES.
 4. JUNCTION BOX FOR MOTORIZED SHADE SHALL BE CONCEALED. CONNECT TO NEAREST RECEPTACLE CIRCUIT. COORDINATE EXACT REQUIREMENTS WITH EQUIPMENT INSTALLED.
 5. PROVIDE SINGLE STATION SMOKE DETECTOR POWERED BY THE BUILDING ELECTRICAL SYSTEM WITH 1-1/2 HOUR BATTERY BACK-UP.
 6. IN BATHROOM LOCATIONS ONLY, LIGHT SWITCH EQUIPPED WITH NIGHT LIGHT. MAINTAIN 2" CLEARANCE FROM ALL OTHER FIXTURES. MOUNTED SO THAT SWITCH IS 48" MAX AFF.
 7. DEDICATED CIRCUIT FOR REFRIGERATOR. REFER TO ARCHITECTURAL ELEVATIONS FOR EXACT DEVICE MOUNTING HEIGHTS AND LOCATIONS.
 8. DEDICATED CIRCUIT FOR DISHWASHER. REFER TO ARCHITECTURAL ELEVATIONS FOR EXACT DEVICE MOUNTING HEIGHTS AND LOCATIONS.
 9. DEDICATED CIRCUIT FOR SINK DRAINAGE. REFER TO ARCHITECTURAL ELEVATIONS FOR EXACT DEVICE MOUNTING HEIGHTS AND LOCATIONS.
 10. DEDICATED CIRCUIT FOR GARAGE DISPOSAL. REFER TO ARCHITECTURAL ELEVATIONS FOR EXACT MOUNTING HEIGHTS AND LOCATIONS.
 11. SWITCH CONTROLLING GARBAGE DISPOSAL.
 12. SWITCH FOR ADJACENT WALL SCONCE.
 13. RECEPTACLE AND SWITCH SHALL BE INSTALLED IN DOUBLE GANG BOX UNDER COMMON FACEPLATE ABOVE COUNTER TOP.

mcmilian
pazdan
smith
ARCHITECTURE

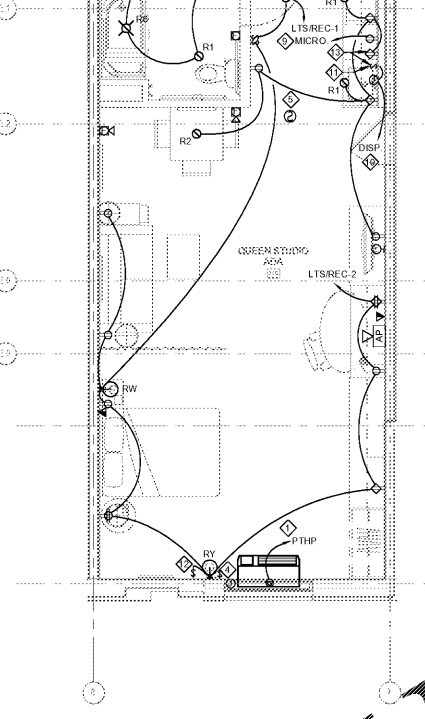
CONSULT LOG
DEVITA
ATLANTA CHARLOTTE GREENVILLE
877.4.DEVITA
devita & associates, inc. Project: 17239
NC State License # C-0819
Checked By: RAG



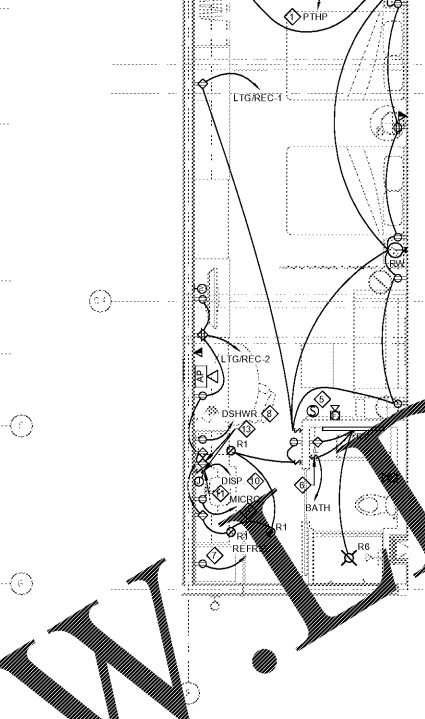
1 GUESTROOM PLAN - QUEEN STUDIO (ELECTRICAL)
E401 1/4" = 1'-0"



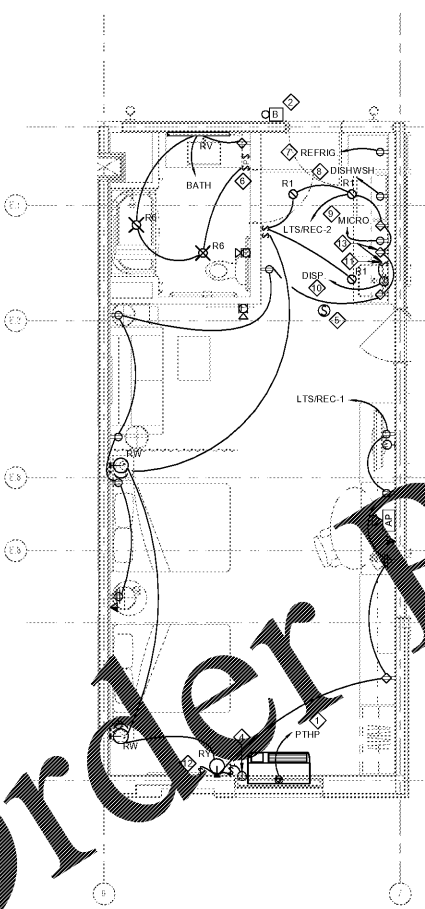
2 GUESTROOM PLAN - QUEEN STUDIO CONNECTOR (ELECTRICAL)
E401 1/4" = 1'-0"



3 GUESTROOM PLAN - QUEEN STUDIO ADA (ELECTRICAL)
E401 1/4" = 1'-0"



4 GUESTROOM PLAN - QUEEN/QUEEN STUDIO (ELECTRICAL)
E401 1/4" = 1'-0"



5 GUESTROOM PLAN - QUEEN/QUEEN STUDIO ADA CONNECTOR (ELECTRICAL)
E401 1/4" = 1'-0"



7 GUESTROOM PLAN - QUEEN/QUEEN STUDIO ADA (ELECTRICAL)
E401 1/4" = 1'-0"

Order Plans @ www.lpdline.com

WINDSOR AUGHTRY
HOME2 ASHEVILLE
380 AIRPORT RD.
ASHEVILLE, NC 28704

SHEET ISSUE
07/30/18
FOR CONSTRUCTION

Revisions		
Number	Description	Date

PRINCIPAL IN CHARGE
PROJECT ARCHITECT
DRAWN BY
SHEET TITLE
**QUEEN/QUEEN
STUDIO - LIGHTING
& POWER**

SHEET NO. PRJ NO.
E401 017378.00

E401