



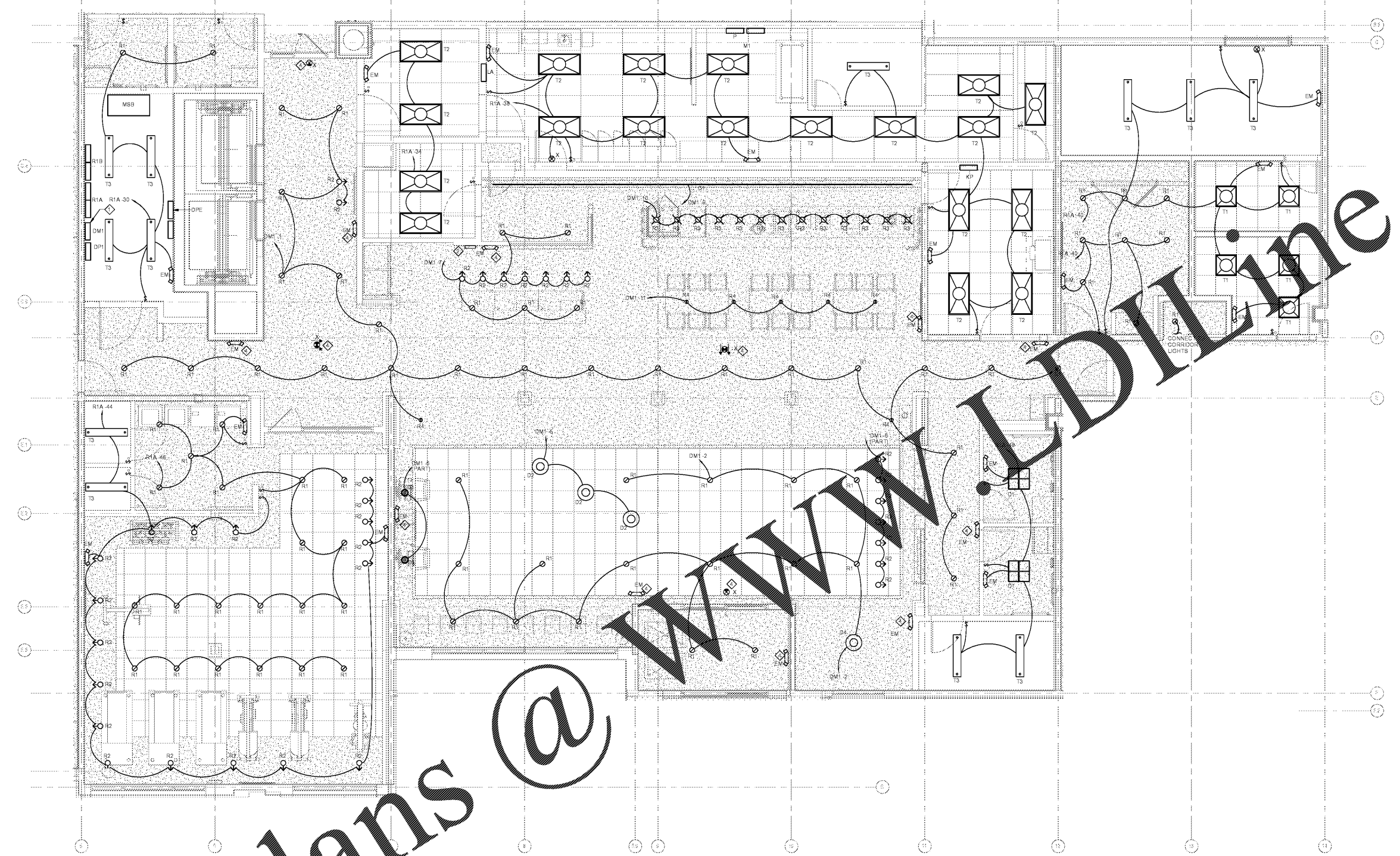
WINDSOR AUGHTRY  
HOME2 ASHEVILLE  
380 AIRPORT RD.  
ASHEVILLE, NC 28704

SHEET ISSUE:  
07/30/18  
FOR CONSTRUCTION

Revisions		
Number	Description	Date

PRINCIPAL IN CHARGE:  
PROJECT ARCHITECT:  
DRAWN BY:  
SHEET TITLE:  
**ENLARGED PUBLIC  
SPACE OVERALL  
PLAN - LIGHTING**

SHEET NO. E303  
PROJ. NO. 017378.00



1 ENLARGED PUBLIC SPACE OVERALL PLAN - LEVEL 1 (LIGHTING)  
1/4" = 1'-0"

**DIMMER SCHEDULE: DM1**

DIMMER MODULE	MODULE TYPE	MAX MODULE VA	DIMMER OUTPUT	MAX OUTPUT VA	LOAD DESCRIPTION	Load	MODULE VA
D1		1920	DM1-1	1200	LTG - MAIN LOBBY COUNTER	478 VA	784 VA
			DM1-2	1200	LTG - MAIN LOBBY FRONT	283 VA	
			DM1-3	1200	SPARE	0 VA	
D2		1920	DM1-4	1200	LTG - LOBBY PENDANTS	225 VA	673 VA
			DM1-7	1200	LTG - MAIN LOBBY WALLWASH	127 VA	
			DM1-7	1200	LTG - LOBBY REG DESK / BUS	204 VA	
			DM1-8	1200	LIGHTING ELECTRICAL 108	0 VA	
			DM1-9	1200	LTG - COVE AT BREAKFAST	32 VA	
D3		1920	DM1-10	1200	LTG - BREAKFAST COUNTER	221 VA	348 VA
			DM1-11	1200	LTG - BREAKFAST TABLES	96 VA	
			DM1-12	1200	SPARE	0 VA	
			DM1-13	1200	SPARE	0 VA	
			DM1-14	1200	SPARE	0 VA	
			DM1-15	1200	SPARE	0 VA	
			DM1-16	1200	SPARE	0 VA	

PROVIDE 3 SCENES PER OWNER REQUIREMENTS:  
DUSK  
DAWN  
ALL ON/OFF OVERRIDE

SPECIFICATION: LUTRON LCP PANEL MAIN LUG ONLY 100A RATED WITH BUILT-IN 201 BREAKERS INTERNAL TO PANEL THAT FEED INDIVIDUAL DIMMER MODULES. EMERGENCY LIGHTS & EXIT SIGNS SHALL BE CONNECTED TO UNSWITCHED HOT OF CIRCUIT BREAKER FEEDING DIMMER MODULE SERVING LIGHTING WHERE EMERGENCY FIXTURE IS LOCATED.

- GENERAL NOTES:**
- EXIT SIGNS, EMERGENCY LIGHTS, AND LIGHT FIXTURES WITH BATTERY BALLAST SHALL BE CIRCUITED WITH UNSWITCHED CONDUCTOR OF CIRCUIT INDICATED, WITH NORMAL POWER BALLAST FOR SWITCHED OPERATION WHERE APPLICABLE.
  - REFERENCE ARCHITECTURAL REFLECTED CEILING PLAN FOR EXACT FIXTURE LOCATIONS.
  - REFER TO SHEET E002 FOR LIGHTING FIXTURE SCHEDULE.
- KEYED NOTES:**
- LOCATION FOR LUTRON DIMMING PANEL FOR LOBBY LIGHTS. REFER TO DM1 SCHEDULE THIS SHEET.
  - 3 BUTTON SCENE SWITCH LOCATED AT REGISTRATION DESK. PROVIDE CONTROL WIRING BACK TO LUTRON PANEL DM1 PER MANUFACTURERS RECOMMENDATIONS.
  - ROUTE CIRCUIT THROUGH LIGHTING CONTROLS. REFER TO DETAIL 3/E01 ON SHEET E001.
  - REFER TO SCHEDULE NOTES THIS SHEET FOR EMERGENCY LIGHT OR EXIT SIGN CIRCUITING IN AREAS SERVED BY DIMMER PANEL DM1.

Order Plans @