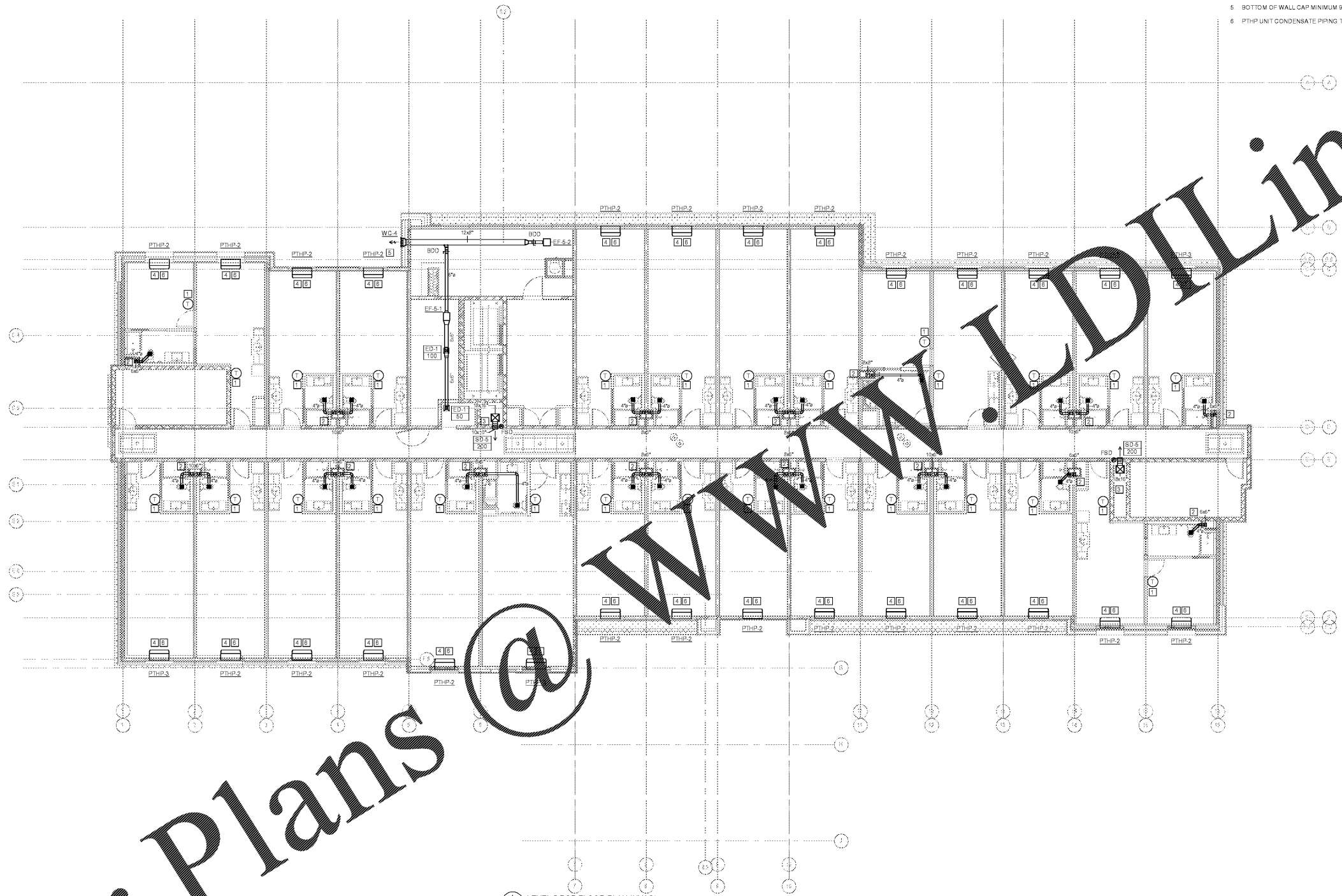


MECHANICAL KEY NOTES:

- HARD-WIRED THERMOSTAT MOUNTED AT 48" A.F.F. COORDINATE ALL WIRING WITH ELECTRICAL CONTRACTOR
- EXHAUST DUCT FROM CENTRIFUGAL EXHAUST FAN ON ROOF ROUTED DOWN IN SHAFT OPENING. SEE SECTION DETAILS 2 THRU 8 ON SHEET M002 FOR MORE INFORMATION.
- SUPPLY DUCT ROUTED FROM ROOFTOP MAU ON ROOF. SEE SECTION DETAIL 1 ON SHEET M002 FOR MORE INFORMATION.
- PTHP TO BE MOUNTED IN WALL PER MANUFACTURER'S RECOMMENDATION. ROUTE CONDENSATE LINE FROM PTHP DOWN IN WALL AND DISCHARGE ON SPLASH BLOCK. SEE DETAILS 4 AND 5 ON SHEET M004 FOR MORE INFORMATION.
- BOTTOM OF WALL CAP MINIMUM 9" A.F.F.
- PTHP UNIT CONDENSATE PIPING TO BE ROUTED TO HUB DRAIN BENEATH UNIT.

mcmilian
pazdan
smith
ARCHITECTURE

DEVITA
ATLANTA CHARLOTTE GREENVILLE
RICHMOND
877.4.DEVITA
Devita & Associates, Inc. Project: 17239
NC Reg. License # C-0819
FLZ Checked By: DV



1 LEVEL 5 RCP FLOOR PLAN (HVAC)
1/8" = 1'-0"

WINDSOR AUGHTRY

HOME2 ASHEVILLE

380 AIRPORT RD.
ASHEVILLE, NC 28704

SHEET ISSUE:
07/30/18
FOR CONSTRUCTION

Revisions

Number	Description	Date

PRINCIPAL IN CHARGE:
PROJECT ARCHITECT:
DRAWN BY:

SHEET TITLE:
LEVEL 5 FLOOR
PLAN - HVAC

SHEET NO. PROJ. NO.
017878 00

M105

Order Plans @

WWW.LDLine.com