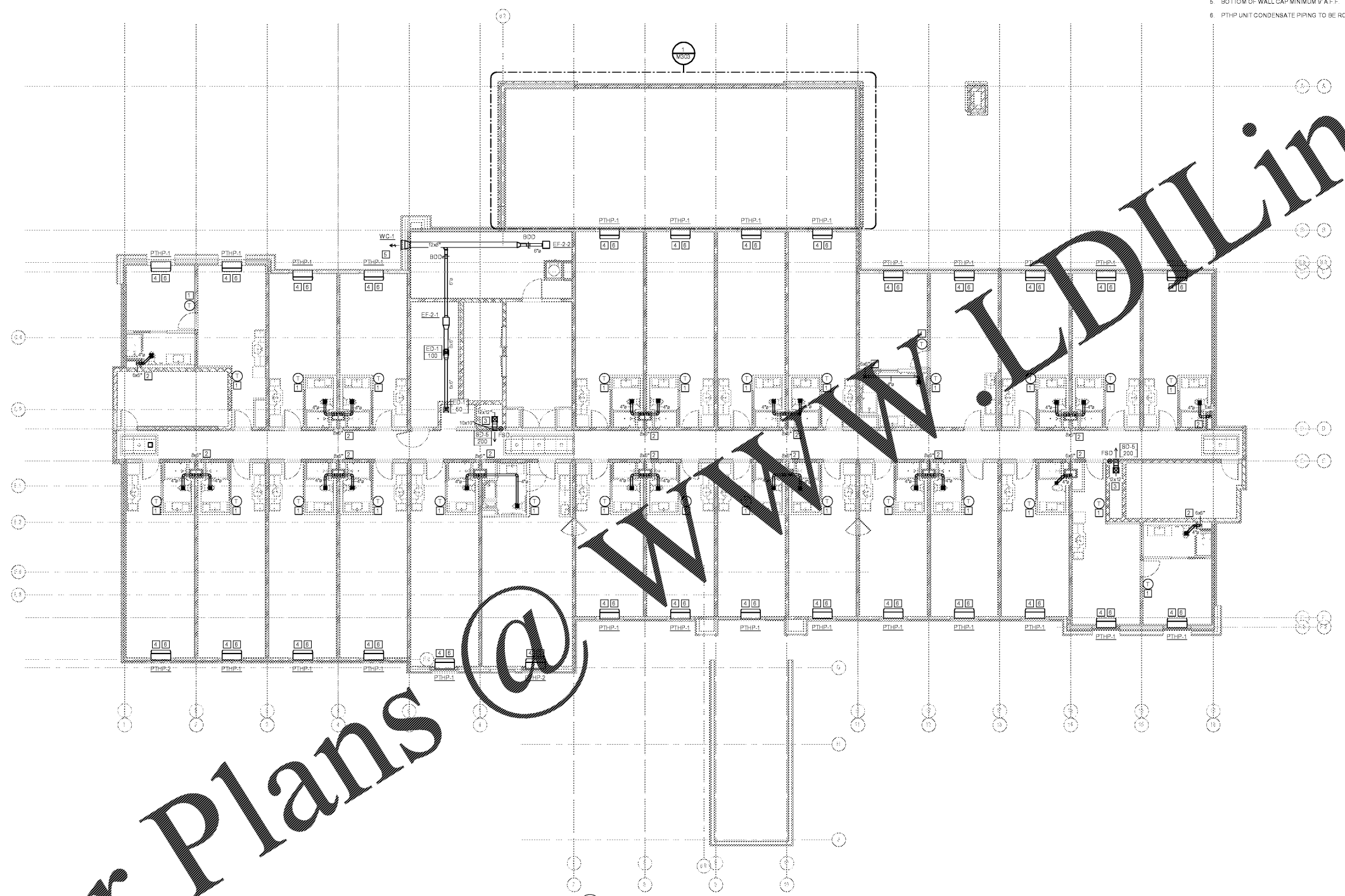


MECHANICAL KEY NOTES: □

- 1. HARD WIRED THERMOSTAT MOUNTED AT 48" A.F.F. COORDINATE ALL WIRING WITH ELECTRICAL CONTRACTOR
- 2. EX-HAUST DUCT FROM CENTRIFUGAL EX-HAUST FAN ON ROOF ROUTED DOWN IN SHAFIT OPENING. SEE SECTION DETAILS 2 THRU 6 ON SHEET M002 FOR MORE INFORMATION.
- 3. SUPPLY DUCT ROUTED FROM ROOFTOP MAU ON ROOF. SEE SECTION DETAIL 1 ON SHEET M002 FOR MORE INFORMATION.
- 4. PTHP TO BE MOUNTED IN WALL PER MANUFACTURER'S RECOMMENDATION. ROUTE CONDENSATE LINE FROM PTHP DOWN IN WALL AND DISCHARGE ON SPLASH BLOCK. SEE DETAILS 4 AND 5 ON SHEET M004 FOR MORE INFORMATION.
- 5. BOTTOM OF WALL CAP MINIMUM 9" A.F.F.
- 6. PTHP UNIT CONDENSATE PIPING TO BE ROUTED TO HUB DRAIN BENEATH UNIT.

mcmilian  
pazdan  
smith  
ARCHITECTURE

DEVITA  
ATLANTA CHARLOTTE GREENVILLE  
RICHMOND  
877.4.DEVITA • info@devitainc.com  
Devita & Associates, Inc. Project: 17239  
NC Firm License # C-0819  
ELZ Checked By: DV



1 LEVEL 2 RCP FLOOR PLAN (HVAC)  
1/8" = 1'-0"

WINDSOR AUGHTRY

HOME2 ASHEVILLE

380 AIRPORT RD.  
ASHEVILLE, NC 28704

SHEET ISSUE:  
07/30/18  
FOR CONSTRUCTION

Revisions		
Number	Description	Date

PRINCIPAL IN CHARGE:  
PROJECT ARCHITECT:  
DRAWN BY:  
SHEET TITLE:  
LEVEL 2 FLOOR  
PLAN - HVAC

SHEET NO. PROJ. NO.  
017878 00

M102

Order Plans @ WWW.LDLine.com