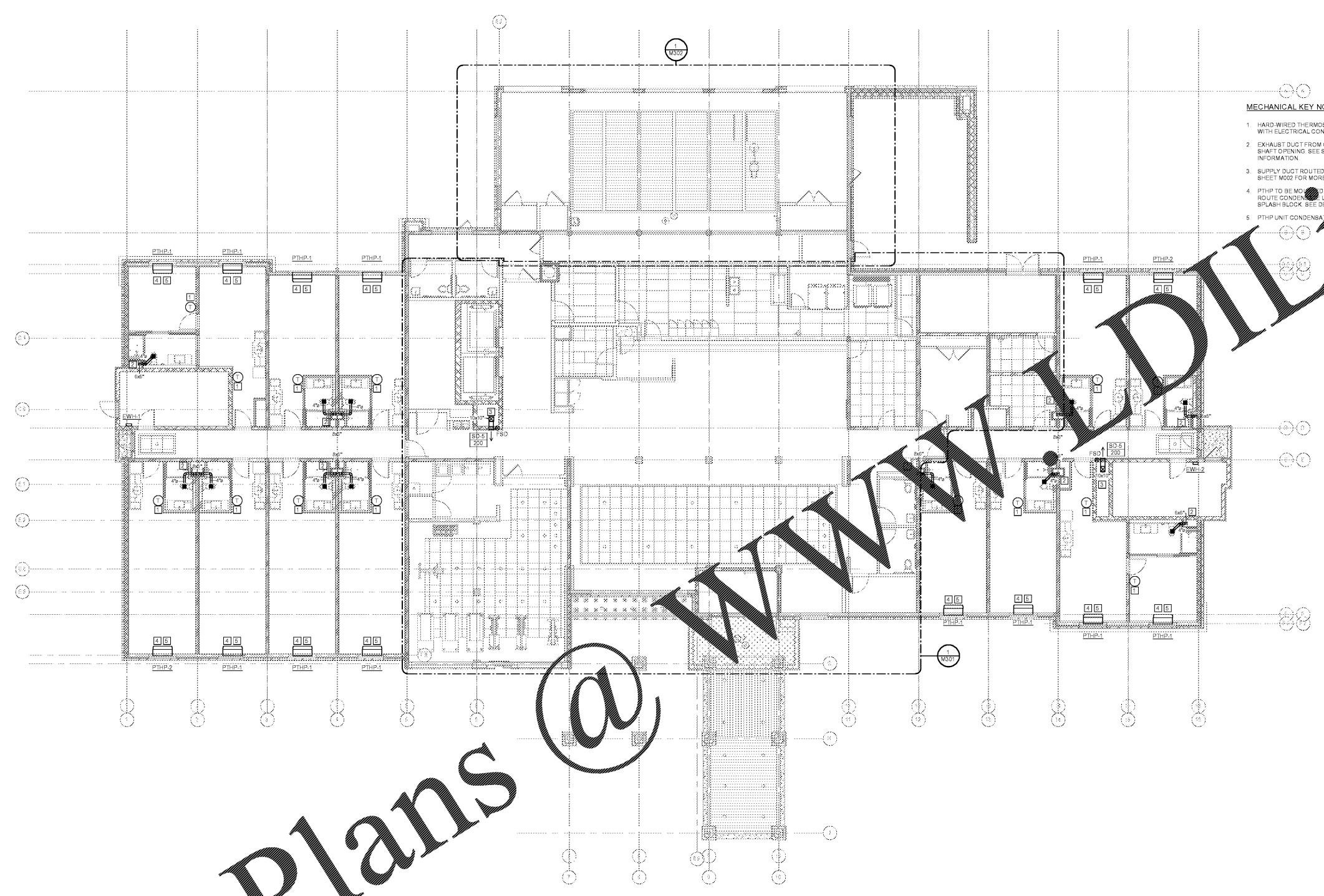




- MECHANICAL KEY NOTES:**
1. HARD WIRED THERMOSTAT MOUNTED AT 48" A.F.F. COORDINATE ALL WIRING WITH ELECTRICAL CONTRACTOR
 2. EXHAUST DUCT FROM CENTRIFUGAL EXHAUST FAN ON ROOF ROUTED DOWN IN SHAFT OPENING. SEE SECTION DETAILS 2 THRU 6 ON SHEET 1 FOR MORE INFORMATION
 3. SUPPLY DUCT ROUTED FROM ROOFTOP MAU ON ROOF. SEE SECTION DETAIL 1 ON SHEET M002 FOR MORE INFORMATION
 4. PTHP TO BE MOUNTED IN WALL PER MANUFACTURER'S RECOMMENDATION. ROUTE CONDENSATE LINE FROM PTHP DOWN TO PLUMBING PLAN. INSTALL SPLASH BLOCK. SEE DETAILS 4 & 5 ON SHEET 1 FOR MORE INFORMATION
 5. PTHP UNIT CONDENSATE PIPING TO BE ROUTED TO DRAIN BENEATH UNIT.



1 LEVEL 1 RCP FLOOR PLAN (HVAC)
M101 1/8" = 1'-0"

WINDSOR AUGHTRY
HOME2 ASHEVILLE
380 AIRPORT RD.
ARJEN, NC 28704

SHEET ISSUE:
07/30/18
FOR CONSTRUCTION

Revisions		
Number	Description	Date

PRINCIPAL IN CHARGE:
PROJECT ARCHITECT:
DRAWN BY:
SHEET TITLE:
LEVEL 1 FLOOR
PLAN - HVAC

SHEET NO. PROJ. NO.
M101 017878.00

Order Plans @

WWW.DIline.com