



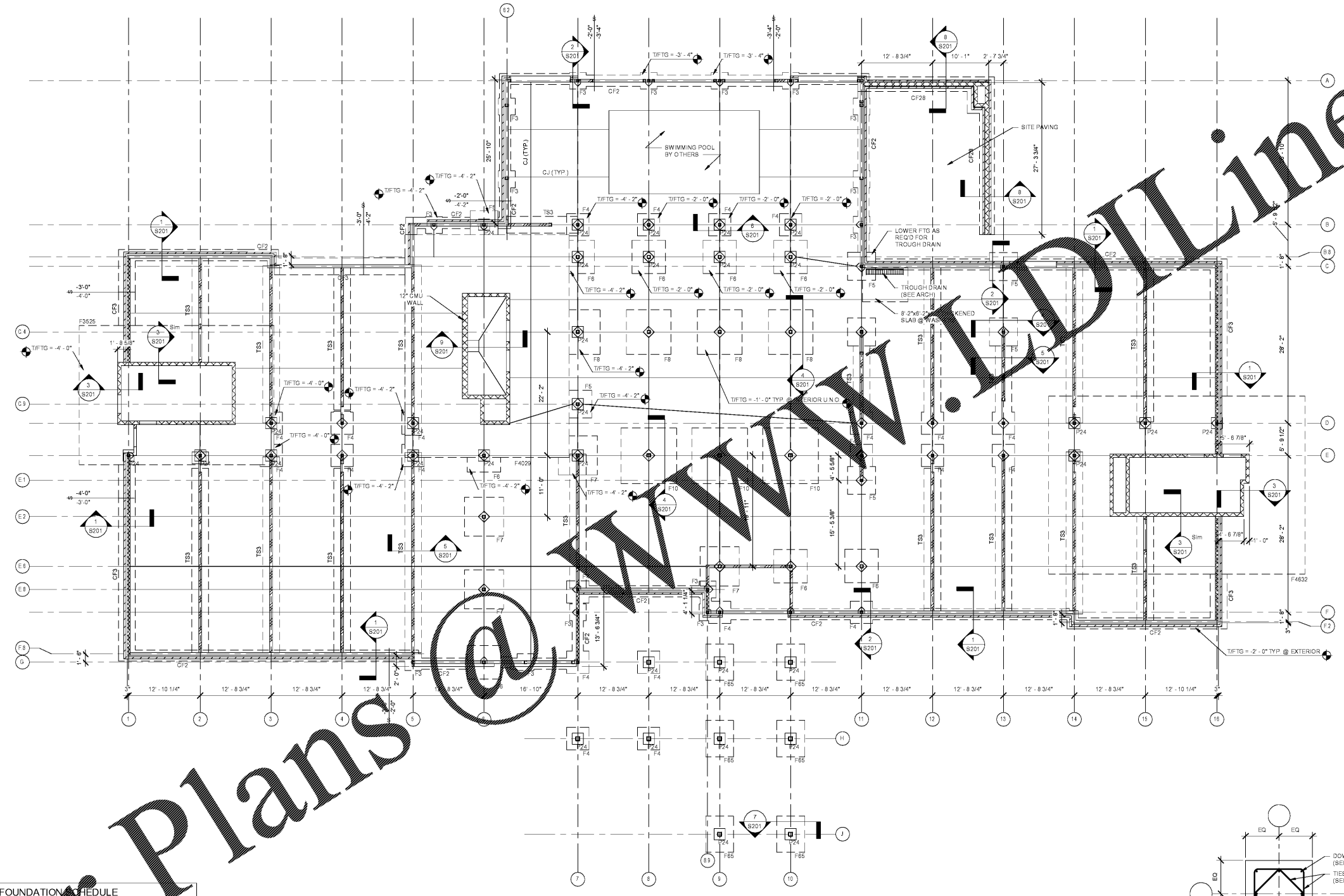
WINDSOR AUGHTRY
HOME2 ASHEVILLE
380 AIRPORT RD.
ARDEEN, NC 28704

SHEET ISSUE:
07/30/18
FOR CONSTRUCTION

Revisions		
Number	Description	Date

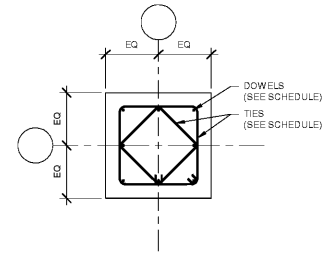
PRINCIPAL IN CHARGE:
PROJECT ARCHITECT:
DRAWN BY:
SHEET TITLE:
FOUNDATION PLAN

SHEET NO. **S101** PROJ. NO. 0178780



1 FOUNDATION PLAN
SCALE: 1/8" = 1'-0"

- NOTES:
- REFERENCE TISLAB ELEVATION = 0'-0" = FFE = 226'
 - SLAB ON GRADE TO BE 4" THICK CAST IN PLACE CONCRETE SLAB ON GRADE REINFORCED WITH WWR #6@W14xW14. SLAB TO BE PLACED ON A 10 MIL VAPOR BARRIER ON A 4" GRANULAR BASE.
 - SEE GEOTECHNICAL REPORT FOR SITE PREPARATION.
 - SEE ARCHITECTURAL, MECHANICAL, PLUMBING, AND ELECTRICAL DRAWINGS FOR LOCATIONS AND DIMENSIONS OF FLOOR DRAINS, BLOCKOUTS, PADS, AND RECESSED AREAS NOT SHOWN.
 - EXTERIOR DIMENSIONS ARE SHOWN TO OUTSIDE FACE OF METAL STUDS.
 - SEE SECOND FLOOR FRAMING PLAN FOR COLUMN IDENTIFICATION.
 - REFER TO GENERAL NOTES FOR SYMBOLS AND ABBREVIATIONS EXCEPT AS NOTED BELOW.
- F - ISOLATED COLUMN FOOTING. SEE SCHEDULE.
P - CONCRETE PER. SEE SCHEDULE.
CJ - SAW CUT CONTROL JOINTS SPACED AT 12'-0" MAX EACH WAY.
TS - CONTINUOUS THICKENED SLAB. SEE SCHEDULE.
CF - CONTINUOUS SPREAD FOOTING. SEE SCHEDULE.
CJ - CMU WALLS.
FOOTING STEP.



PEDESTAL SCHEDULE						
ID	L	W	T.O.P.	T.O.F.	DOWELS	TIES
P24	24"	24"	0'-8" SEE PLAN	SEE PLAN	(8) #6	#6 @ 12"

- PEDESTAL NOTES:
- DOWELS SHALL HAVE 90 DEGREE STANDARD HOOKS INTO FOOTING. HOOKS SHALL BE PLACED UNDER TOP BAR OF BOTTOM LAYER OF FOOTING REINF. w/ 3" COVER TO BOTTOM OF FOOTING.
 - PLACE (3) #6 TIES @ 4" O.C. AT TOP OF PEDESTAL AND (1) #6 TIE 2" FROM THE TOP OF THE FOOTING. THEN SPACE REMAINING TIES PER THE MAXIMUM SPACING SHOWN IN SCHEDULE.
 - COORDINATE DOWEL AND TIE LOCATION w/ ANCHOR ROD LAYOUT. DOWELS AND TIES MAY BE ADJUSTED A MAXIMUM OF 1" TO MISS ANCHOR RODS.
 - DASHED LINES SHOWN IN DETAILS INDICATED IDEALIZED PEDESTAL SIZE FOR DOWEL AND TIE FABRICATION AND PLACEMENT ONLY.

FOUNDATION SCHEDULE		
ID	SIZE	REINFORCING
F3	3'-0" x 3'-0" x 1'-0"	#6 @ 12" O.C. E.W. BOTTOM
F4	2'-0" x 2'-0" x 1'-0"	#6 @ 12" O.C. E.W. BOTTOM
F5	1'-0" x 5'-0" x 1'-0"	#6 @ 12" O.C. E.W. BOTTOM
F6	1'-0" x 6'-0" x 1'-0"	#6 @ 12" O.C. E.W. BOTTOM
F6B	1'-0" x 5'-0" x 1'-0"	#6 @ 12" O.C. E.W. TOP & BOTTOM
F7	1'-0" x 5'-0" x 1'-0"	#6 @ 12" O.C. E.W. TOP & BOTTOM
F8	8'-0" x 1'-0" x 1'-0"	#6 @ 12" O.C. E.W. TOP & BOTTOM
F10	10'-0" x 1'-0" x 1'-0"	#6 @ 12" O.C. E.W. TOP & BOTTOM
F25	35'-0" x 1'-0" x 1'-0"	(21) #6 LONG BARS BOTTOM (9) #6 SHORT BARS BOTTOM #6 @ 12" E.W. TOP
F4029	1'-0" x 1'-0" x 3'-0"	(33) #6 SHORT BARS BOTTOM (17) #6 LONG BARS BOTTOM #6 @ 12" E.W. TOP
F53	48'-0" x 32'-0" x 3'-0"	(18) #6 LONG BARS BOTTOM (9) #6 SHORT BARS BOTTOM #6 @ 12" E.W. TOP
CF2B	Continuous Footing - 2'-0" x 12"	(4) #4 CONTINUOUS #4 @ 9" TRANSVERSE
CF3	Continuous Footing - 3'-0" x 12"	(5) #4 CONTINUOUS #4 @ 9" TRANSVERSE
CF5	Continuous Footing - 5'-0" x 12"	(5) #5 CONTINUOUS #5 @ 12" TRANSVERSE
TS3	Thickened Slab - 3'-0" x 12"	(4) #4 CONTINUOUS #4 @ 9" TRANSVERSE

ORDER PLANS @ WWW.ORDERPLANS.COM
 ALL RIGHTS RESERVED.