

WINDSOR AUGHTRY
HOME2 ASHEVILLE
380 AIRPORT RD.
ASHEVILLE, NC 28704

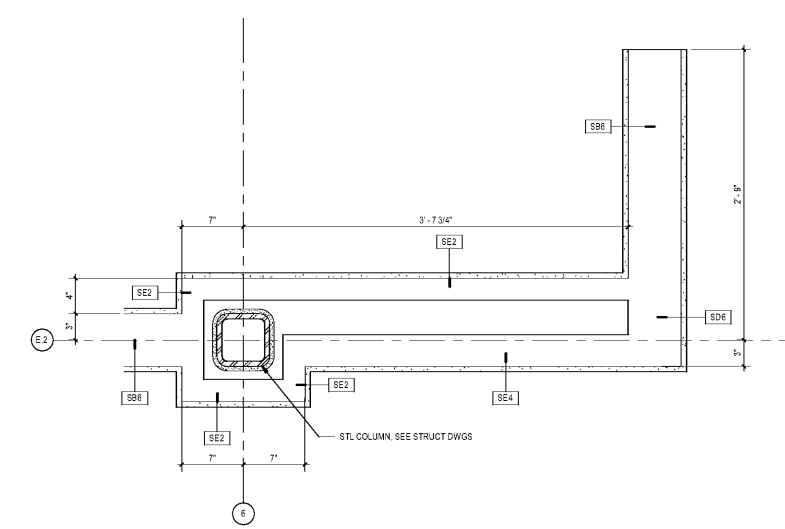
SHEET ISSUE
07/30/18
FOR CONSTRUCTION

Revisions		
Number	Description	Date

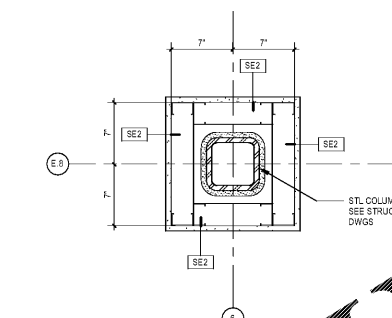
PRINCIPAL IN CHARGE: BZ
PROJECT ARCHITECT: BZ
DRAWN BY: BT

SHEET TITLE:
**ENLARGED PLAN
DETAILS**

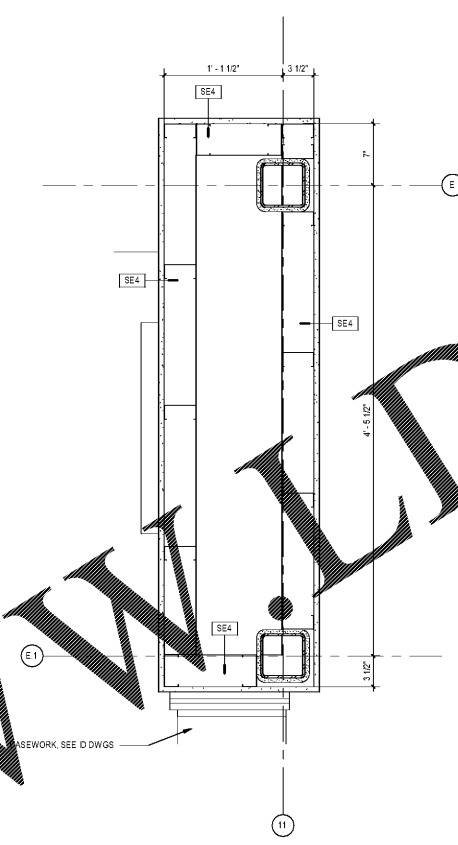
SHEET NO. PROJ. NO.
A511 017378.00



D2 LOBBY PLAN DTL J
1 1/2" x 1'-0"

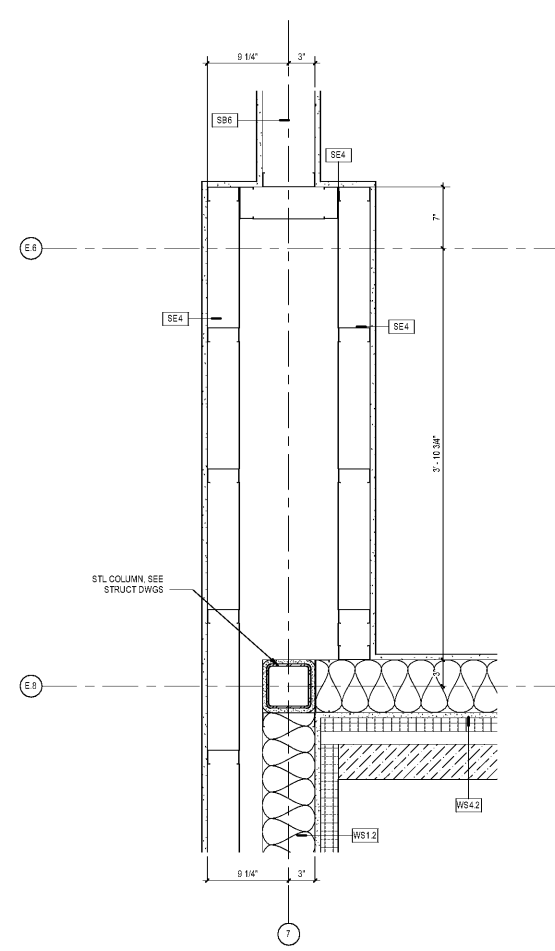


C2 LOBBY PLAN DTL H
1 1/2" x 1'-0"

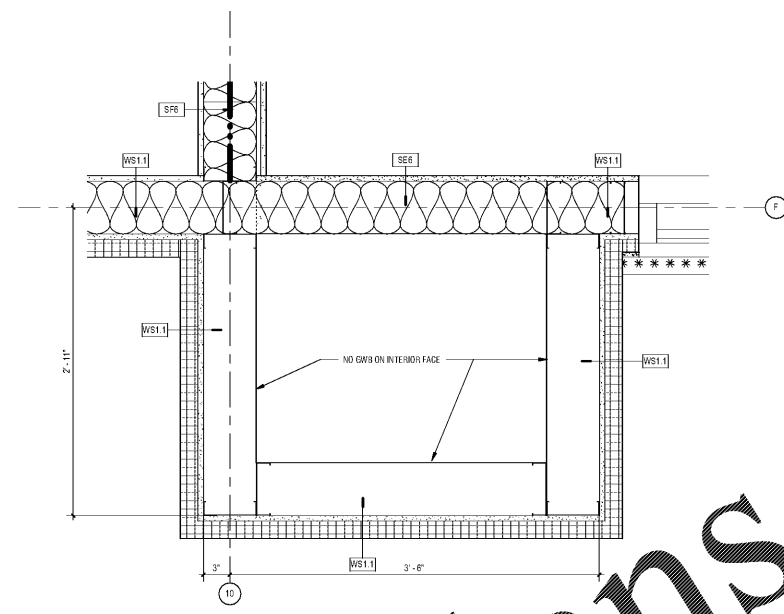


C1 LOBBY PLAN DTL F
1 1/2" x 1'-0"

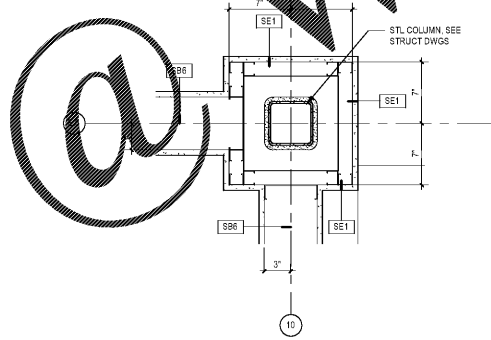
C4 LOBBY PLAN DTL B
1 1/2" x 1'-0"



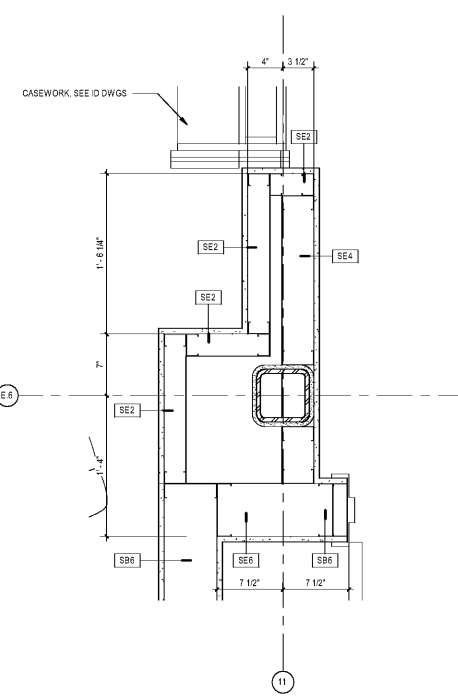
C5 LOBBY PLAN DTL C
1 1/2" x 1'-0"



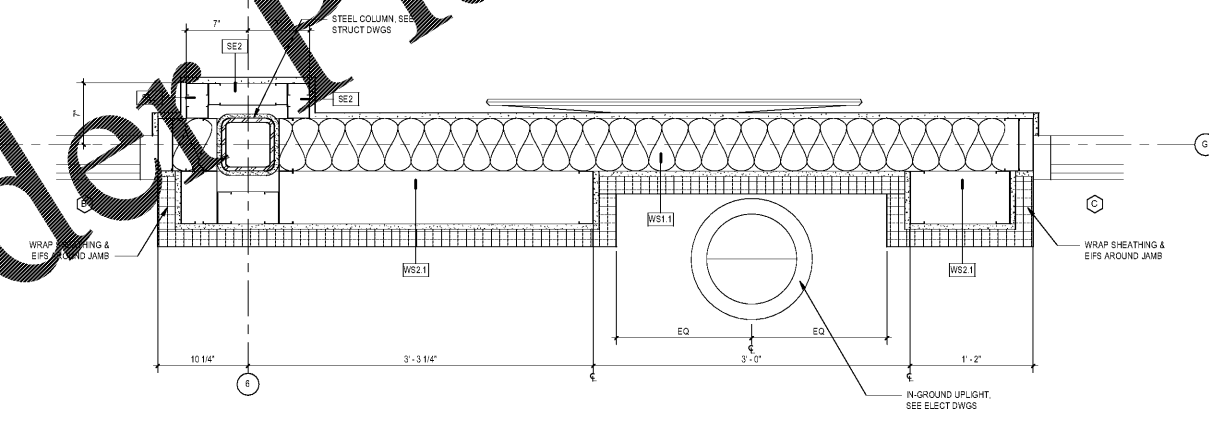
B1 EXTERIOR BUMP-OUT C PLAN DTL
1 1/2" x 1'-0"



B2 LOBBY PLAN DTL D
1 1/2" x 1'-0"



A3 LOBBY PLAN DTL E
1 1/2" x 1'-0"



A1 LOBBY PLAN DTL G
1 1/2" x 1'-0"

MCMILLAN, PAZDAN & SMITH ARCHITECTURE, INC. IS AN EQUAL OPPORTUNITY AFFIRMATIVE ACTION EMPLOYER. MINORITY AND FEMALE CANDIDATES ARE ENCOURAGED TO APPLY. THE FIRM IS AN EQUAL OPPORTUNITY AFFIRMATIVE ACTION EMPLOYER. MCMILLAN, PAZDAN & SMITH ARCHITECTURE, INC. IS AN EQUAL OPPORTUNITY AFFIRMATIVE ACTION EMPLOYER. MINORITY AND FEMALE CANDIDATES ARE ENCOURAGED TO APPLY. THE FIRM IS AN EQUAL OPPORTUNITY AFFIRMATIVE ACTION EMPLOYER. MCMILLAN, PAZDAN & SMITH ARCHITECTURE, INC. IS AN EQUAL OPPORTUNITY AFFIRMATIVE ACTION EMPLOYER. MINORITY AND FEMALE CANDIDATES ARE ENCOURAGED TO APPLY. THE FIRM IS AN EQUAL OPPORTUNITY AFFIRMATIVE ACTION EMPLOYER.

Order Plans @ WWW.LDILine.com