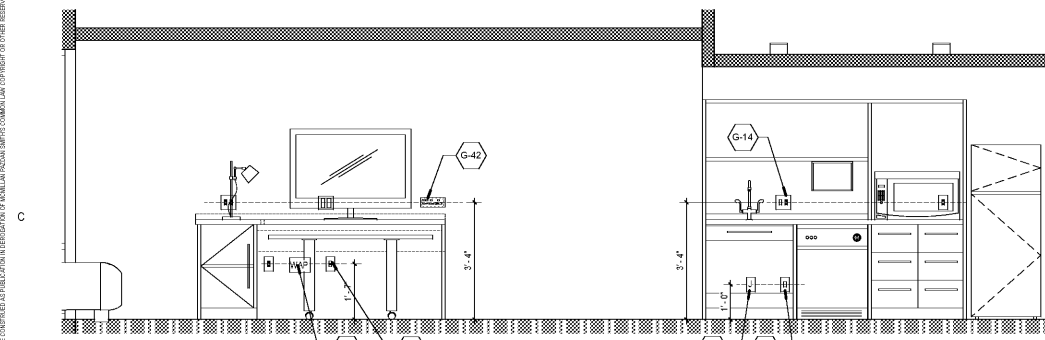


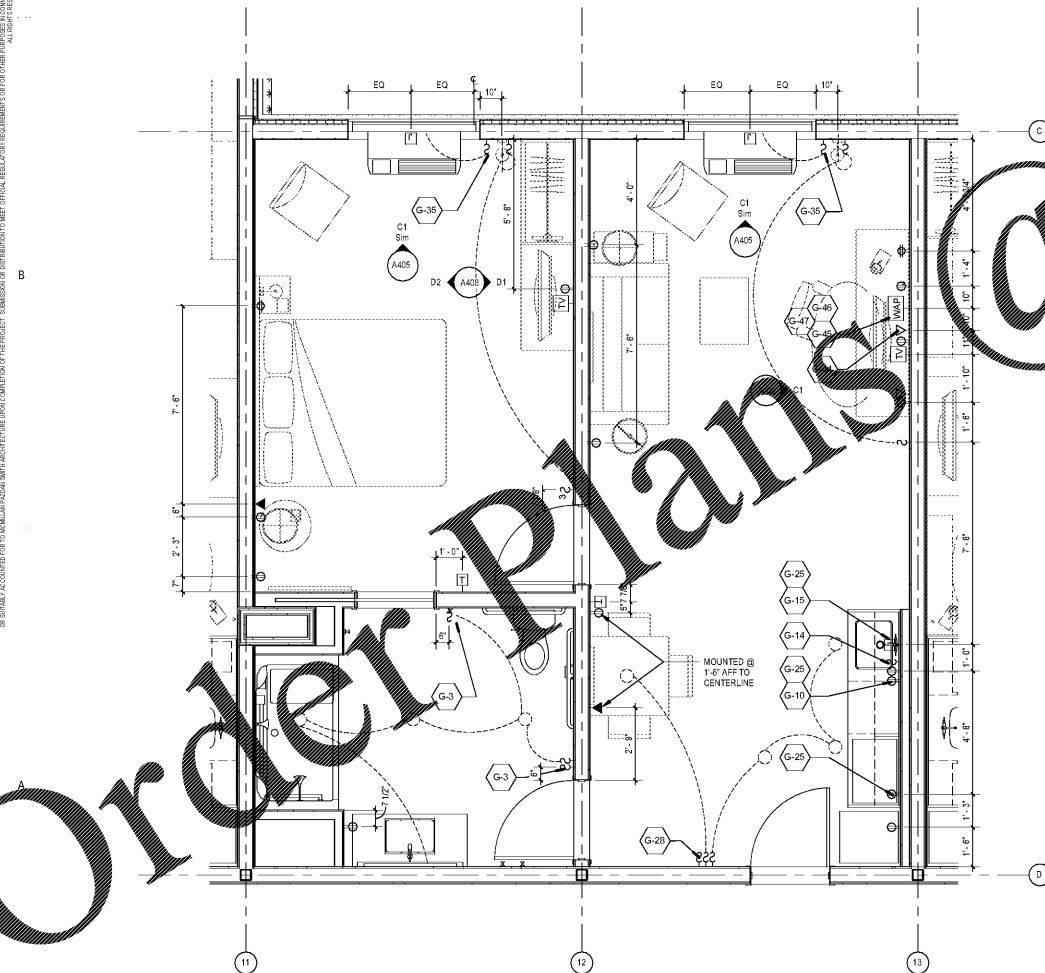
KING 1 BEDRM ADA ELEV B
12' x 1'-0"

KING 1 BEDRM ADA ELEV C
12' x 1'-0"

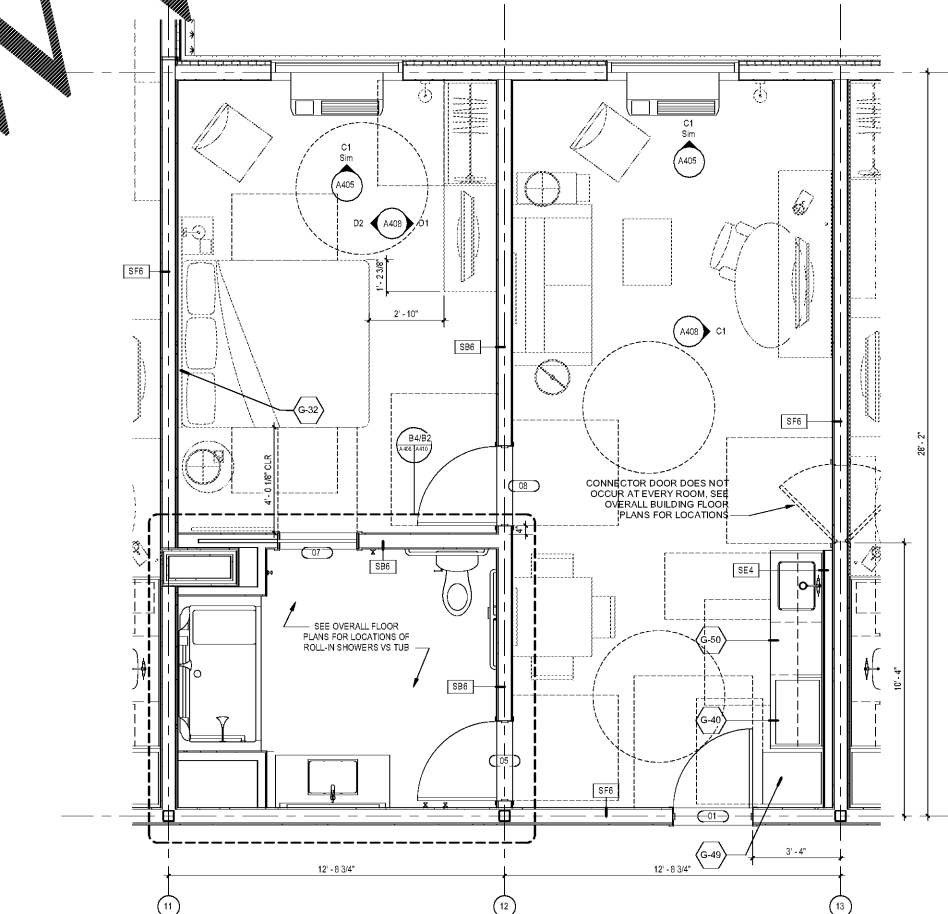


KING 1 BEDRM ADA ELEV A
12' x 1'-0"

KING 1 BEDRM ADA ELEV BCP



KING 1 BEDROOM ADA ELEC PLAN
3/8" = 1'-0"



KING 1 BEDROOM ADA PLAN
3/8" = 1'-0"

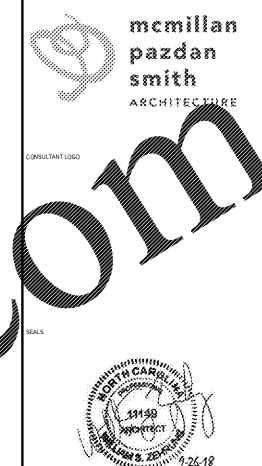
- GUESTROOM RCP LEGEND**
- GR-203 WALL MOUNTED LIGHT FIXTURE
 - R1 RECESSED DOWNLIGHT FIXTURE
 - R2 RECESSED WALL WASH LIGHT FIXTURE
 - R3 RECESSED LIGHT FIXTURE W/ LENS, UL WET LABELED
 - INTERIOR WALL SCOSCE
 - 5/8" GYP BOARD CEILING ON METAL STUDS

- GUESTROOM ELEC LEGEND**
- DUPLEX OUTLET
 - QUAD OUTLET
 - DATA OUTLET
 - VOICE OUTLET
 - OUTLET
 - SWITCH
 - THEMSTAT
 - FLOOR MOUNTED JUNCTION BOX
 - WALL MOUNTED JUNCTION BOX
 - CEILING MOUNTED JUNCTION BOX

- GUESTROOM GENERAL NOTES**
1. REFER TO FFE PACKAGE FOR FURNITURE, BUILT-IN MILLWORK & FINISH SPEC'S
 2. WALL RECEPTACLES/ DATA PORTS TO BE MOUNTED @ 12" AFF TIP, UNO
 3. THERMOSTATS IN NON ADA ROOMS TO BE MOUNTED @ 5'-0" AFF TO TOP OF CONTROLS
 4. THERMOSTATS IN ADA ROOMS TO BE MOUNTED @ 42" AFF TO TOP OF CONTROLS
 5. LIGHT SWITCHES IN GUESTROOMS TO BE MOUNTED @ 48" AFF TO TOP OF CONTROLS, UNO
 6. LIGHT SWITCHES IN GUESTROOM BATHROOMS TO BE MOUNTED @ 42" AFF TO CENTERLINE OF CONTROLS, UNO
 7. IN ADA ROOMS AT LEAST ONE OUTLET & DATA CONNECTION FOR USE BY GUESTS MUST BE MOUNTED BETWEEN 18" & 48" AFF AND PROVIDE A CLEAR FLOOR AREA OF 30"x48" IN FRONT OF OUTLET
 8. ALL DEVICES SHALL BE OFFSET SO THAT NO DEVICE IN ADJACENT GUESTROOMS ARE BACK TO BACK WITH LESS THEN 3" CLEARANCE BETWEEN THE REAR OF EACH BOX. OFFSET SHALL BE 6" CLEAR WHERE REQD. GC TO COORDINATE ALL OPENINGS IN CASEWORK AS REQD.
 9. ALL CONTROLS FOR USE BY GUESTS MUST BE MOUNTED B/W 12" AFF & 48" AFF. OPERABLE CONTROLS LOCATED OVER AN OBSTRUCTION DEEPER THAN 12" MUST BE MOUNTED NO HIGHER THAN 48" AFF
 10. IF A CONFLICT EXISTS BETWEEN THE ELECTRICAL LAYOUT SHOWN ON THIS SHEET AND THE ELECTRICAL ENGINEER'S DRAWING CONCERNING PLACEMENT AND/OR ARRANGEMENT OF DEVICES, GC SHALL CONTACT ARCHITECT PRIOR TO CONSTRUCTION FOR CLARIFICATION
 11. SEE GUESTROOM ELEVATIONS THIS SHEET FOR OUTLET AND SWITCH HEIGHTS, UNLESS HEIGHT IS NOTED ON ELECTRICAL PLAN THIS SHEET. GUESTROOM ELEVATIONS PROVIDED TO SHOW ELECTRICAL OUTLET AND SWITCH HEIGHTS ONLY. SEE D DRAWINGS FOR ALL INFO RELATED TO FFE MOUNTING HEIGHTS AND FINISHES
 12. ALL GYP BOARD AT WET WALL LOCATIONS TO BE MOISTURE RESISTANT

GUESTROOM KEYNOTES

Keynote Value	Keynote Text
G-3	IN BATHROOM LOCATIONS ONLY, LIGHT SWITCH EQUIPPED WITH NIGHT LIGHT, MAINTAIN 2" DISTANCE FROM ALL OTHER DEVICES MOUNTED SO TOP OF SWITCH IS 48" MAX AFF
G-10	DEDICATED CIRCUIT FOR DISHWASHER
G-14	SWITCH CONTROLLING GARBAGE DISPOSAL
G-15	DEDICATED CIRCUIT FOR GARBAGE DISPOSAL
G-25	EXTEND J-BOX, DEVICE & COVER PLATE FLUSH W/ MILLWORK BACK PANEL
G-28	DOORBELL ON/OFF SWITCH (HEARING IMPAIRED ROOMS ONLY), PROVIDE SIGNAGE AS REQD
G-32	GC TO PROVIDE BLOCKING TO RECEIVE ITEM INDICATED - EXTEND FULL LENGTH OF OBJECT
G-35	SWITCHES CONTROLLING MIRROR SHADOWS - REFER TO FFE MANUAL
G-40	COUNTERTOP MICROWAVE
G-42	DATA POWER RECEPTACLE LOCATION FOR CONNECTIVITY PANEL
G-44	WHEN AN OPTIONAL WIRED CONNECTION FOR GUEST IS ALSO PROVIDED, ANOTHER CATER-JAS CABLE TERMINATED ON AN 8-PIN RJ-45 FEMALE JACK MUST BE PROVIDED ON THE WALL BELOW THE DESKWORK AREA, MAINTAIN 6" CLEARANCE FROM ALL OTHER OUTLETS AND DEVICES & PATCH CORD SHOULD BE PROVIDED AT THE DESKTOP FOR GUEST CONVENIENCE
G-45	EACH CABLE MUST HOMERUN BETWEEN THE GUESTROOM AND THE DF ON EACH FLOOR
G-46	PROVIDE (1) CATER-JAS CABLE IN EVERY GUESTROOM ON THE WALL BELOW THE DESKWORK AREA TERMINATED ON AN 8-PIN RJ-45 FEMALE JACK FOR WIRELESS ACCESS POINT INFRASTRUCTURE (LINE POWERED WAP)
G-47	COORDINATE WAP LOCATION WITH CASEGOODS TO AVOID CONFLICT
G-48	REFRIGERATOR
G-50	UNDER-COUNTER DISHWASHER



WINDSOR AUGHTRY
HOMEZ ASHEVILLE
380 AIRPORT RD.
ASHEVILLE, NC 28704

SHEET ISSUE
07/30/18
FOR CONSTRUCTION

Revisions		
Number	Description	Date

PRINCIPAL IN CHARGE: BZ
PROJECT ARCHITECT: BZ
DRAWN BY: BT
SHEET TITLE:
**GUESTROOM
PLANS - KING 1
BEDROOM ADA**

SHEET NO. PROJ. NO.
017378.00

A408