

GUESTROOM RCP LEGEND

- GR-203 WALL MOUNTED LIGHT FIXTURE
- R1 RECESSED DOWNLIGHT FIXTURE
- R2 RECESSED WALL WASH LIGHT FIXTURE
- R3 RECESSED LIGHT FIXTURE W/ LENS, UL WET LABELED
- INTERIOR WALL SCONCE
- 5/8" GYP BOARD CEILING ON METAL STUDS

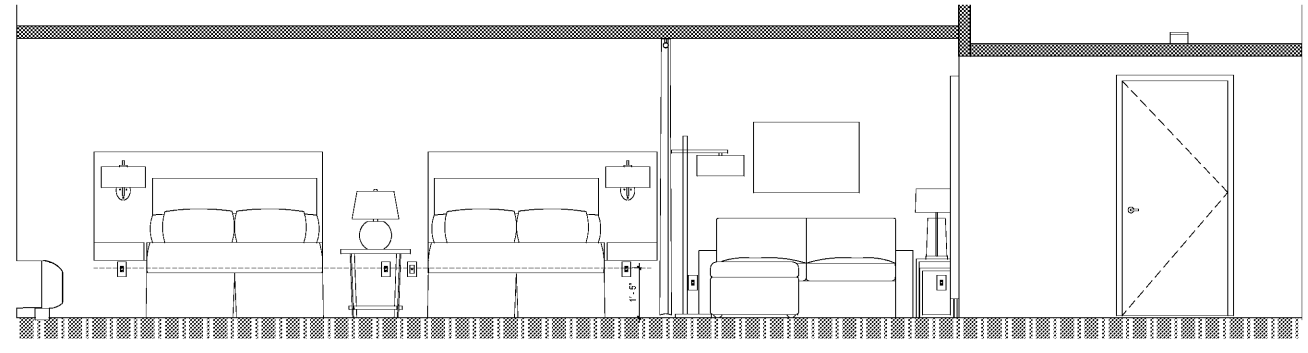
GUESTROOM ELEC LEGEND

- DUPLEX OUTLET
- QUAD OUTLET
- DATA OUTLET
- VOICE OUTLET
- OUTLET
- SWITCH
- TRIP SWITCH
- FLOOR MOUNTED JUNCTION BOX
- WALL MOUNTED JUNCTION BOX
- CEILING MOUNTED JUNCTION BOX

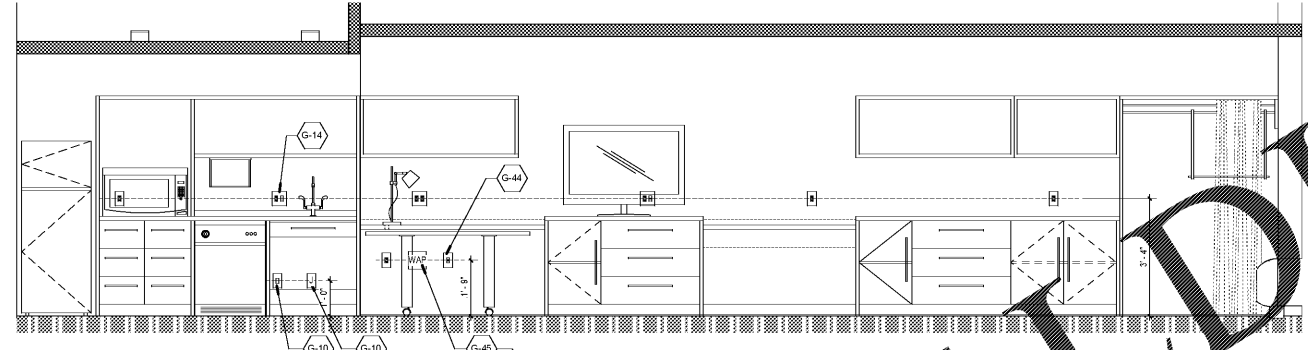
GUESTROOM GENERAL NOTES

- 1 REFER TO FFE PACKAGE FOR FURNITURE, BUILT-IN MILLWORK & FINISH SPEC'S
- 2 WALL RECEPTACLES/ DATA PORTS TO BE MOUNTED @ 12" AFF TYP UNO
- 3 THERMOSTATS IN NON ADA ROOMS TO BE MOUNTED @ 5'-0" AFF TO TOP OF CONTROLS
- 4 THERMOSTATS IN ADA ROOMS TO BE MOUNTED @ 48" AFF TO TOP OF CONTROLS
- 5 LIGHT SWITCHES IN GUESTROOMS TO BE MOUNTED @ 48" AFF TO TOP OF CONTROLS UNO
- 6 LIGHT SWITCHES IN GUESTROOM BATHROOMS TO BE MOUNTED @ 47" AFF TO CENTERLINE OF CONTROLS UNO
- 7 IN ADA ROOMS, AT LEAST ONE OUTLET & DATA CONNECTION FOR USE BY GUESTS MUST BE MOUNTED BETWEEN 15" & 48" AFF AND PROVIDE A CLEAR FLOOR AREA OF 30"x48" IN FRONT OF OUTLET
- 8 ALL DEVICES SHALL BE OFFSET SO THAT NO DEVICE IN ADJACENT GUESTROOMS ARE BACK TO BACK WITH LESS THEN 3" CLEARANCE BETWEEN THE REAR OF EACH J-BOX. OFFSET SHALL BE 0" CLEAR WHERE REQD. GC TO COORDINATE ALL OPENINGS IN CASEWORK AS REQD.
- 9 ALL CONTROLS FOR USE BY GUESTS MUST BE MOUNTED B/W 15" AFF & 48" AFF. OPERABLE CONTROLS LOCATED OVER AN OBSTRUCTION DEEPER THAN 10" MUST BE MOUNTED NO HIGHER THAN 48" AFF
- 10 IF A CONFLICT EXISTS BETWEEN THE ELECTRICAL LAYOUT SHOWN ON THIS SHEET AND THE ELECTRICAL ENGINEER'S DRAWING CONCERNING PLACEMENT AND/OR ARRANGEMENT OF DEVICES, GC SHALL CONTACT ARCHITECT PRIOR TO CONSTRUCTION FOR CLARIFICATION
- 11 SEE GUESTROOM ELEVATIONS THIS SHEET FOR OUTLET AND SWITCH HEIGHTS. UNLESS HEIGHT IS NOTED ON ELECTRICAL PLAN THIS SHEET. GUESTROOM ELEVATIONS PROVIDED TO SHOW ELECTRICAL OUTLET AND SWITCH HEIGHTS ONLY. SEE ID DRAWINGS FOR ALL INFO RELATED TO FFE MOUNTING HEIGHTS AND FINISHES
- 12 ALL GYP BOARD AT WET WALL LOCATIONS TO BE MOISTURE RESISTANT

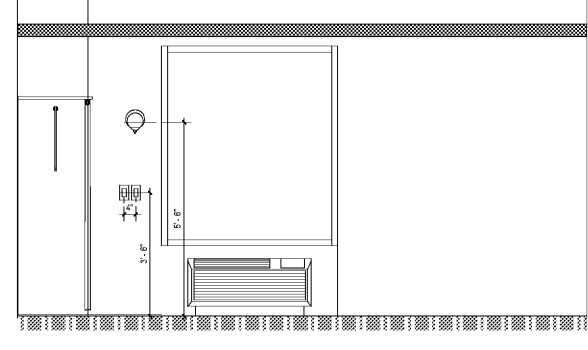
GUESTROOM KEYNOTES	
Keynote Value	Keynote Text
G-3	IN BATHROOM LOCATIONS ONLY, LIGHT SWITCH EQUIPPED WITH NIGHT LIGHT. MAINTAIN 2" DISTANCE FROM ALL OTHER DEVICES MOUNTED SO TOP OF SWITCH IS 48" MAX AFF
G-4	BLACK OUT ROLLER SHADDES
G-6	CEILING MOUNTED DRAINERY ADD - PROVIDE BLOCKING AS REQD
G-10	DEDICATED CIRCUIT FOR DISHWASHER
G-14	SWITCH CONTROLLING GARBAGE DISPOSAL
G-15	DEDICATED CIRCUIT FOR GARBAGE DISPOSAL
G-25	EXTEND J-BOX, DEVICE & COVER PLATE FLUSH W/ MILLWORK BACK PANEL
G-28	DOORBELL ON/OFF SWITCH (HEARING IMPAIRED ROOMS ONLY). PROVIDE SIGNAGE AS REQD
G-32	GC TO PROVIDE BLOCKING TO RECEIVE ITEM INDICATED - EXTEND FULL LENGTH OF OBJECT
G-33	GC TO COORDINATE W/ FIXTURE FABRICATOR WHERE NECESSARY TO PROVIDE PROPER BLOCKING N WALL FOR ITEM KEYNOTED
G-35	SWITCHES CONTROLLING MECH SHADDES - REFER TO FFE MANUAL
G-40	COUNTERTOP MICROWAVE
G-44	WHEN AN OPTIONAL WIRED CONNECTION FOR GUEST IS ALSO PROVIDED, ANOTHER CAT6 RJ45 CABLE TERMINATED ON AN 8-PIN RJ45 FEMALE JACK MUST BE PROVIDED ON THE WALL BELOW THE DESKWORK AREA. MAINTAIN 6" CLEARANCE FROM ALL OTHER OUTLETS AND DEVICES. A PATCH CORD SHOULD BE PROVIDED AT THE DESKTOP FOR GUEST CONVENIENCE
G-45	EACH CABLE MUST HOMERUN BETWEEN THE GUESTROOM AND THE DF ON EACH FLOOR
G-46	PROVIDE (1) CAT6 RJ45 CABLE IN EVERY GUESTROOM ON THE WALL BELOW THE DESKWORK AREA TERMINATED ON AN 8-PIN RJ45 FEMALE JACK FOR WIRELESS ACCESS POINT INFRASTRUCTURE (LINE POWERED WWP)
G-47	COORDINATE WWP LOCATION WITH CASEGOODS TO AVOID CONFLICT
G-48	LAYOUT AND CONSTRUCTION IS TO START AT REFRIGERATOR. HOLD DIM AND PROCEED UP THE WALL FROM THAT END. FINAL INSTALLATION IS SHELF AND ROD AT CLOSET. THESE ARE TO BE SCRIBED AT WALL AS REQD
G-49	REFRIGERATOR
G-50	UNDER-COUNTER DISHWASHER



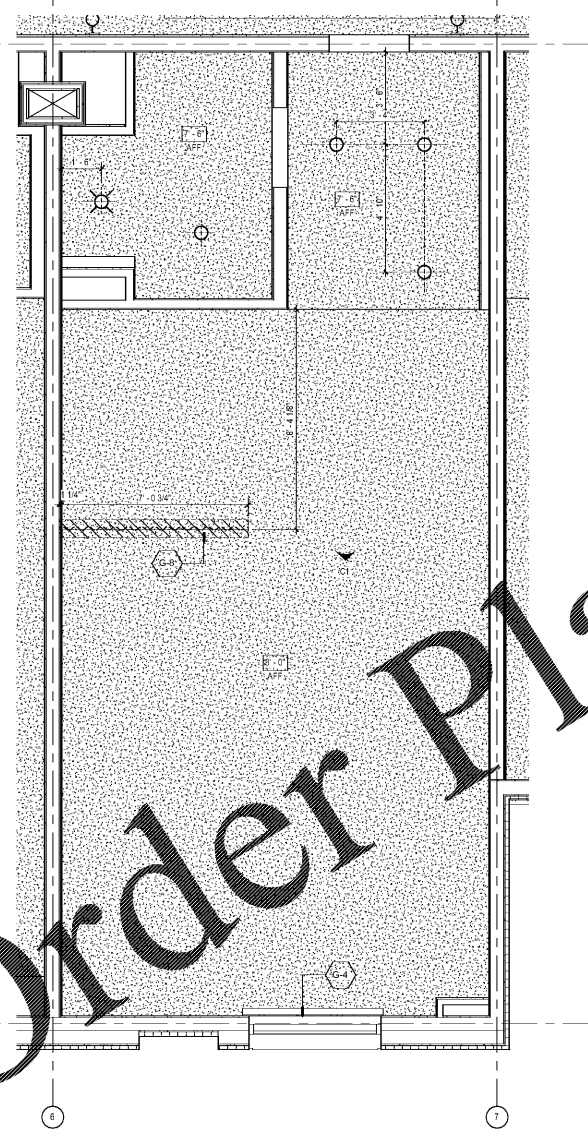
QQ STUDIO ADA ELEV B
1/2" = 1'-0"



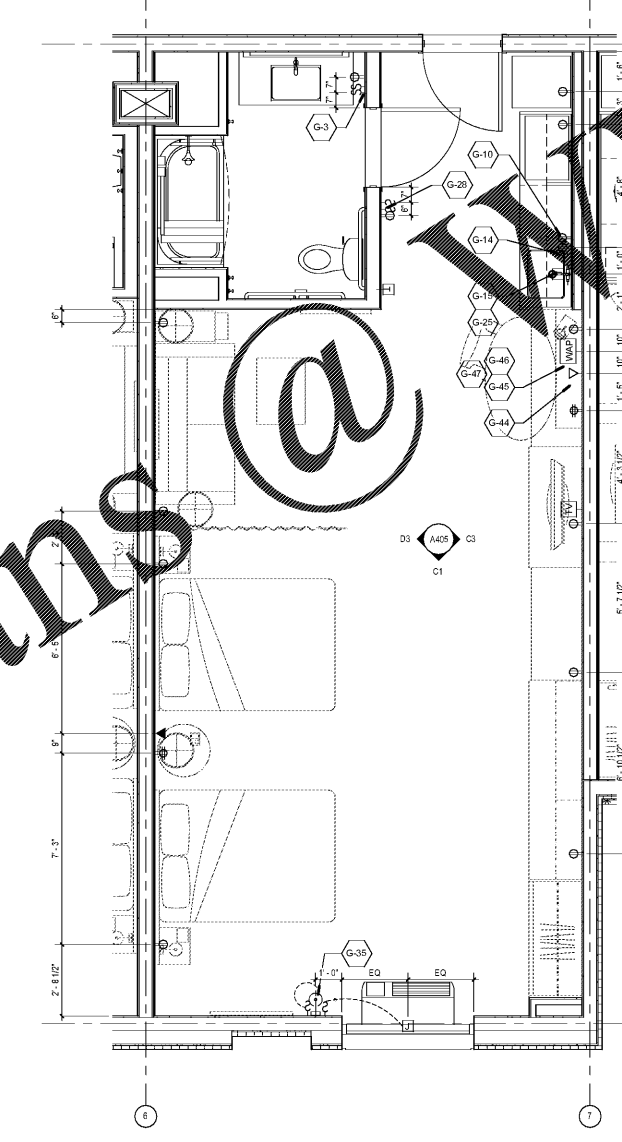
QQ STUDIO ADA ELEV A
1/2" = 1'-0"



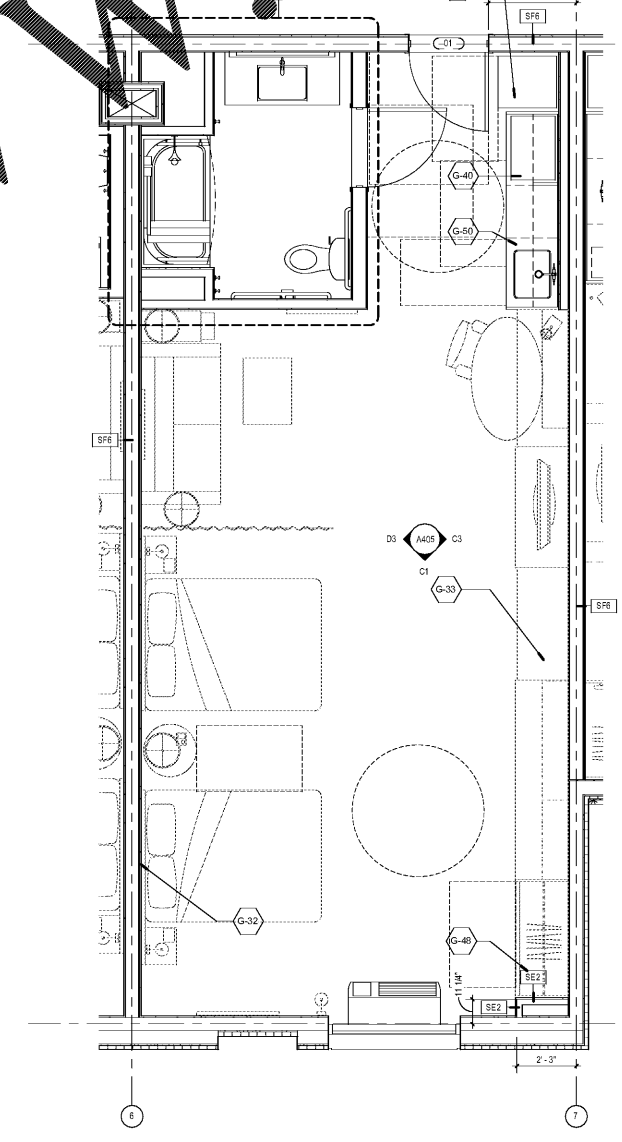
QQ STUDIO ADA ELEV C
1/2" = 1'-0"



QUEEN QUEEN STUDIO ADA RCP
3/8" = 1'-0"



QUEEN QUEEN STUDIO ADA ELECTRICAL PLAN
3/8" = 1'-0"



QUEEN QUEEN STUDIO ADA PLAN
3/8" = 1'-0"

SHEET ISSUE
07/30/18
FOR CONSTRUCTION

Revisions		
Number	Description	Date

ORDER PLANS @ WWW.LDLINE.COM
 2018 WINDSOR AUGHTRY ARCHITECTURE, INC. ALL RIGHTS RESERVED. THIS DRAWING IS THE PROPERTY OF WINDSOR AUGHTRY ARCHITECTURE, INC. AND IS NOT TO BE REPRODUCED OR TRANSMITTED IN ANY FORM OR BY ANY MEANS, ELECTRONIC OR MECHANICAL, WITHOUT THE EXPRESS WRITTEN PERMISSION OF WINDSOR AUGHTRY ARCHITECTURE, INC. WINDSOR AUGHTRY ARCHITECTURE, INC. IS NOT RESPONSIBLE FOR THE ACCURACY OF THE INFORMATION PROVIDED IN THIS DRAWING. THE USER OF THIS DRAWING SHALL BE RESPONSIBLE FOR OBTAINING ALL NECESSARY PERMITS AND REGULATORY APPROVALS. WINDSOR AUGHTRY ARCHITECTURE, INC. IS NOT RESPONSIBLE FOR ANY DAMAGE TO PERSONS OR PROPERTY, INCLUDING CONSEQUENTIAL DAMAGES, ARISING FROM THE USE OF THIS DRAWING.