

GUESTROOM RCP LEGEND

- GR-203 WALL MOUNTED LIGHT FIXTURE
- R1 RECESSED DOWNLIGHT FIXTURE
- R2 RECESSED WALL WASH LIGHT FIXTURE
- R3 RECESSED LIGHT FIXTURE W/ LENS JL. WET LABELED
- INTERIOR WALL SCONCE
- 5/8" GYP BOARD CEILING ON METAL STUDS

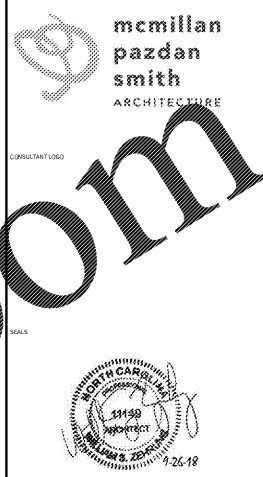
GUESTROOM ELEC LEGEND

- DUPLEX OUTLET
- QUAD OUTLET
- DATA OUTLET
- VOICE OUTLET
- OUTLET
- SWITCH
- THEMSTAT
- FLOOR MOUNTED JUNCTION BOX
- WALL MOUNTED JUNCTION BOX
- CEILING MOUNTED JUNCTION BOX

GUESTROOM GENERAL NOTES

1. REFER TO FFE PACKAGE FOR FURNITURE, BUILT-IN MILLWORK & FINISH SPECS
2. WALL RECEPTACLES/ DATA PORTS TO BE MOUNTED @ 12" AFF TYP UNO
3. THERMOSTATS IN NON ADA ROOMS TO BE MOUNTED @ 5'-0" AFF TO TOP OF CONTROLS
4. THERMOSTATS IN ADA ROOMS TO BE MOUNTED @ 48" AFF TO TOP OF CONTROLS
5. LIGHT SWITCHES IN GUESTROOMS TO BE MOUNTED @ 48" AFF TO TOP OF CONTROLS, UNO
6. LIGHT SWITCHES IN GUESTROOM BATHROOMS TO BE MOUNTED @ 40" AFF TO CENTERLINE OF CONTROLS, UNO
7. IN ADA ROOMS, AT LEAST ONE OUTLET & DATA CONNECTION FOR USE BY GUESTS MUST BE MOUNTED BETWEEN 1' & 48" AFF AND PROVIDE A CLEAR FLOOR AREA OF 30" x 48" IN FRONT OF OUTLET
8. ALL DEVICES SHALL BE OFFSET SO THAT NO DEVICE IN ADJACENT GUESTROOMS ARE BACK TO BACK WITH LESS THAN 1" CLEARANCE BETWEEN THE REAR OF EACH J BOX. OFFSET SHALL BE 6" CLEAR WHERE REQ'D. GC TO COORDINATE ALL OPENINGS IN CASEWORK AS REQ'D.
9. ALL CONTROLS FOR USE BY GUESTS MUST BE MOUNTED 5' AFF & 48" AFF, OPERABLE
10. IF A CONFLICT EXISTS BETWEEN THE ELECTRICAL LAYOUT SHOWN ON THIS SHEET AND THE ELECTRICAL ENGINEER'S DRAWING CONCERNING PLACEMENT AND/OR ARRANGEMENT OF DEVICES, GC SHALL CONTACT ARCHITECT PRIOR TO CONSTRUCTION FOR CLARIFICATION
11. SEE GUESTROOM ELEVATIONS THIS SHEET FOR OUTLET & SWITCH HEIGHTS, UNLESS HEIGHT IS NOTED ON ELECTRICAL PLAN. THIS SHEET GUESTROOM ELEVATIONS PROVIDED TO SHOW ELECTRICAL OUTLET AND SWITCH HEIGHTS ONLY. SEE OTHER DRAWINGS FOR ALL RELATED TO FFE MOUNTING HEIGHTS AND FINISHES
12. ALL GYP BOARD AT WET WALL LOCATIONS TO BE MOISTURE RESISTANT

GUESTROOM KEYNOTES	
Keynote Value	Keynote Text
G-3	IN BATHROOM LOCATIONS ONLY, LIGHT SWITCH EQUIPPED WITH NIGHT LIGHT. MAINTAIN 2" DISTANCE FROM ALL OTHER DEVICES MOUNTED SO TOP OF SWITCH IS 48" MAX AFF
G-10	DEDICATED CIRCUIT FOR DISHWASHER
G-14	SWITCH CONTROLLING GARBAGE DISPOSAL
G-15	DEDICATED CIRCUIT FOR GARBAGE DISPOSAL
G-25	EXTEND J-BOX, DEVICE & COVER PLATE FLUSH W/ MILLWORK BACK PANEL
G-28	DOORBELL ON/OFF SWITCH (HEARING IMPAIRED ROOMS ONLY). PROVIDE SIGNAGE AS REQ'D
G-33	GC TO COORDINATE W/ FIXTURE FABRICATOR WHERE NECESSARY TO PROVIDE PROPER BLOCKING IN WALL FOR ITEM KEYNOTED
G-35	SWITCHES CONTROLLING MECH SHADES - REFER TO FFE MANUAL
G-40	COUNTERTOP MICROWAVE
G-44	WHEN AN OPTIONAL WIRED CONNECTION FOR GUEST IS ALSO PROVIDED, ANOTHER CATE-A48 CABLE TERMINATED ON AN 8-PIN RJ45 REMALE JACK MUST BE PROVIDED ON THE WALL BELOW THE DESKWORK AREA. MAINTAIN 6" CLEARANCE FROM ALL OTHER OUTLETS AND DEVICES. A PATCH CORD SHOULD BE PROVIDED AT THE DESKTOP FOR GUEST CONVENIENCE
G-45	EACH CABLE MUST HOMERUN BETWEEN THE GUESTROOM AND THE DF ON EACH FLOOR
G-46	PROVIDE (1) CAT5E/UTP CABLE IN EVERY GUESTROOM ON THE WALL BELOW THE DESKWORK AREA TERMINATED ON AN 8-PIN RJ45 REMALE JACK FOR WIRELESS ACCESS POINT INFRASTRUCTURE (LINE POWERED WAP)
G-47	COORDINATE WAP LOCATION WITH CASEGOODS TO AVOID CONFLICT
G-48	LAYOUT AND CONSTRUCTION IS TO START AT REFRIGERATOR HOLD DIM AND PROCEED UP THE WALL FROM THAT END. FINAL INSTALLATION IS SHELF AND ROD AT CLOSET. THESE ARE TO BE SCRIBED AT WALL AS REQ'D
G-49	REFRIGERATOR
G-50	UNDER-COUNTER DISHWASHER



WINDSOR AUGHTRY
HOME2 ASHEVILLE
380 AIRPORT RD.
ASHEVILLE, NC 28704

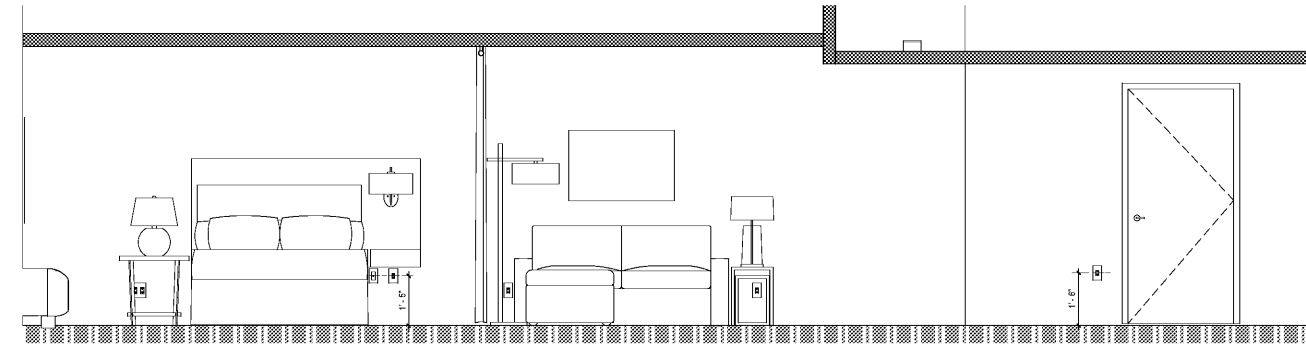
SHEET ISSUE
07/30/18
FOR CONSTRUCTION

Revisions		
Number	Description	Date

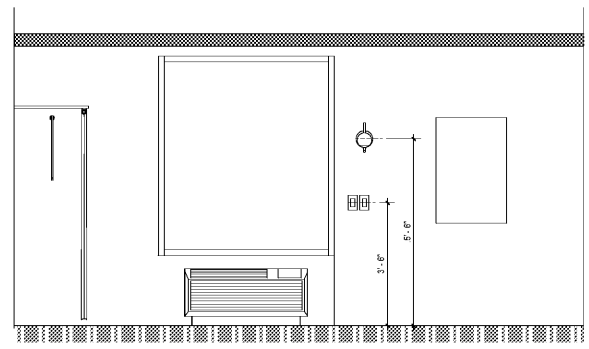
PRINCIPAL IN CHARGE: BZ
PROJECT ARCHITECT: BZ
DRAWN BY: BT

SHEET TITLE:
GUESTROOM PLANS - QUEEN STUDIO ADA

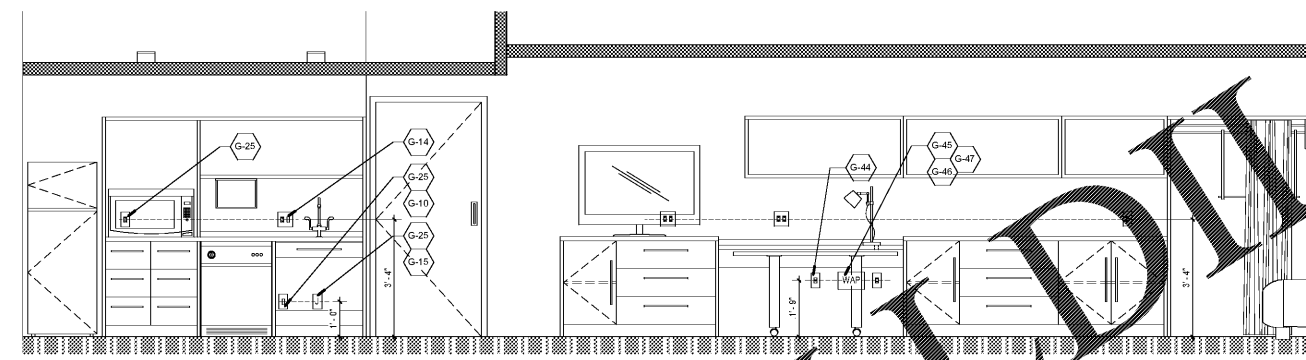
SHEET NO: A403
PROJ. NO: 017378.00



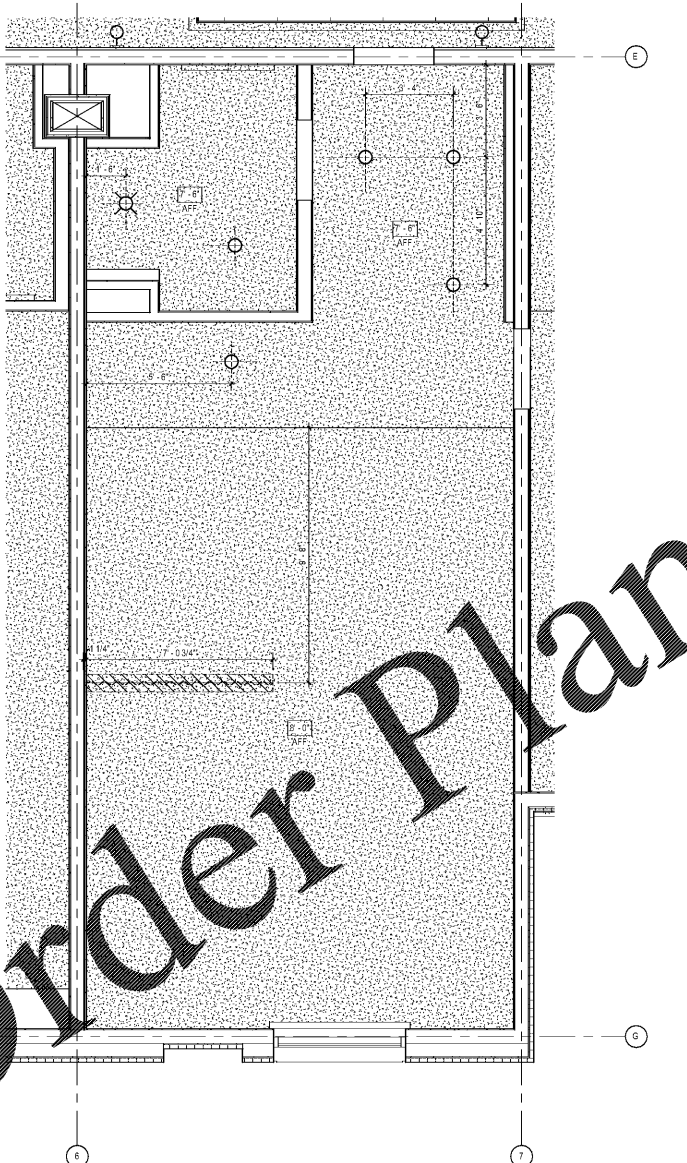
QUEEN STUDIO ADA ELEV B
1/2" = 1'-0"



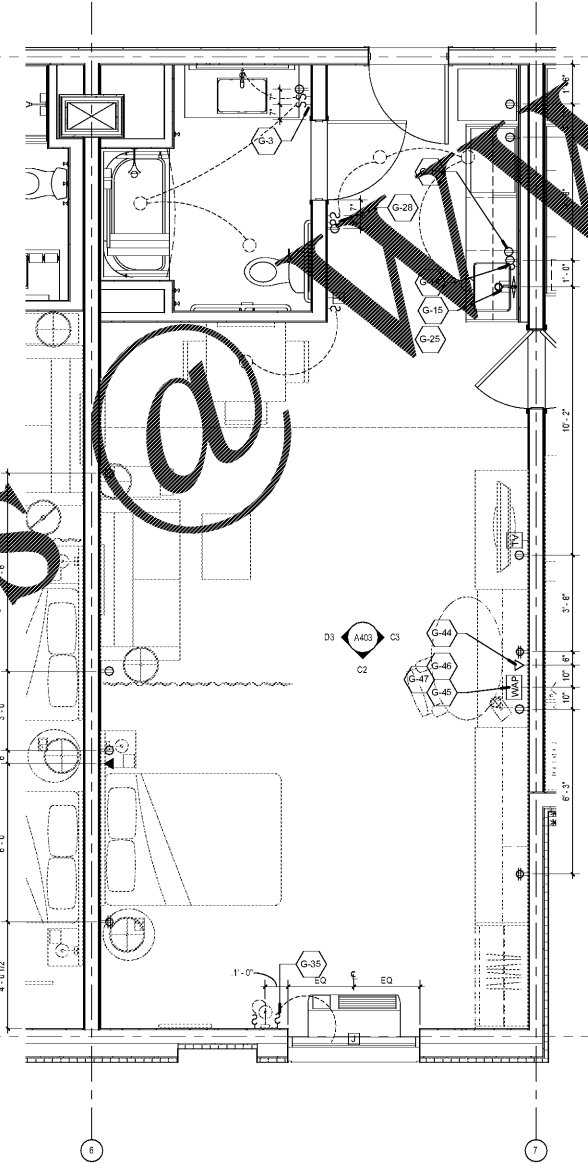
QUEEN STUDIO ADA ELEV C
1/2" = 1'-0"



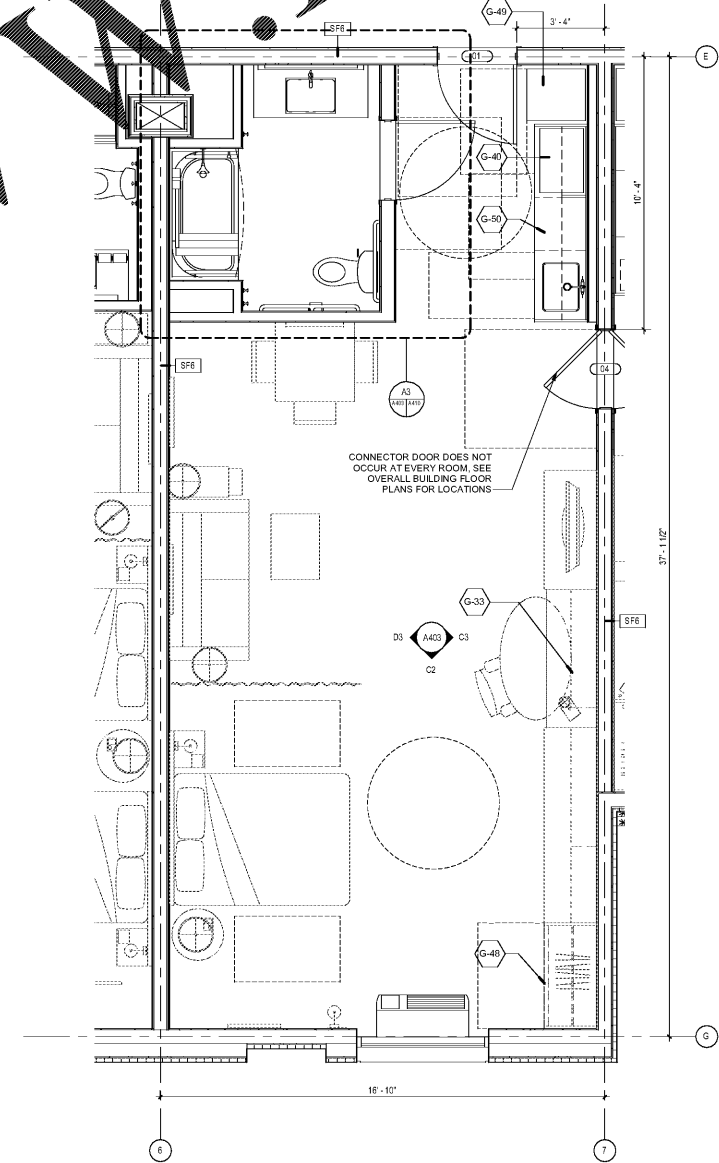
QUEEN STUDIO ADA ELEV A
1/2" = 1'-0"



QUEEN STUDIO ADA RCP
3/8" = 1'-0"



QUEEN STUDIO ADA ELECTRICAL PLAN
3/8" = 1'-0"



QUEEN STUDIO ADA PLAN
3/8" = 1'-0"

ALL RIGHTS RESERVED. THIS DOCUMENT IS THE PROPERTY OF MCMILLAN PAZDAN SMITH ARCHITECTURE. IT IS TO BE USED ONLY FOR THE PROJECT AND SITE SPECIFICALLY IDENTIFIED HEREIN. ANY REUSE OR MODIFICATION OF THIS DOCUMENT WITHOUT THE WRITTEN PERMISSION OF MCMILLAN PAZDAN SMITH ARCHITECTURE IS STRICTLY PROHIBITED.

Order Plans @ www.walddesign.com