

**GUESTROOM RCP LEGEND**

- GR-203 WALL MOUNTED LIGHT FIXTURE
- R1 RECESSED DOWNLIGHT FIXTURE
- R2 RECESSED WALL WASH LIGHT FIXTURE
- R3 RECESSED LIGHT FIXTURE W/ LENS. UL WET LABELED
- INTERIOR WALL SCONCE
- 5/8" GYP BOARD CEILING ON METAL STUDS

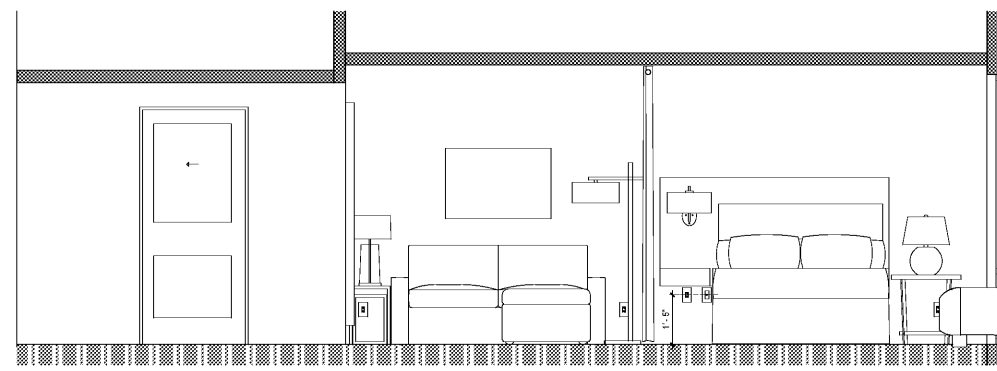
**GUESTROOM ELEC LEGEND**

- DUPLEX OUTLET
- QUAD OUTLET
- DATA OUTLET
- TV OUTLET
- WALL MOUNTED THERMOSTAT
- FLOOR MOUNTED JUNCTION BOX
- WALL MOUNTED JUNCTION BOX
- CEILING MOUNTED JUNCTION BOX

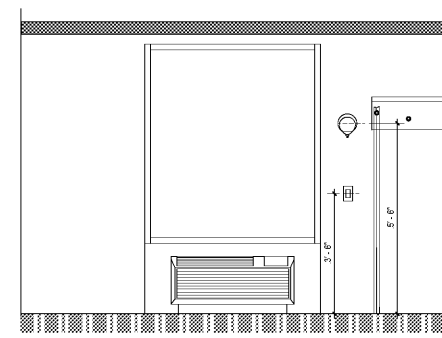
**GUESTROOM GENERAL NOTES**

1. REFER TO FRAE PACKAGE FOR FURNITURE, BUILT-IN MILLWORK & FINISH SPECS
2. WALL RECEPTACLES DATA PORTS TO BE MOUNTED @ 12" AFF TYP. UNO
3. THERMOSTATS IN NON ADA ROOMS TO BE MOUNTED @ 6" AFF TO TOP OF CONTROLS
4. THERMOSTATS IN ADA ROOMS TO BE MOUNTED @ 48" AFF TO TOP OF CONTROLS
5. LIGHT SWITCHES IN GUESTROOMS TO BE MOUNTED @ 48" AFF TO TOP OF CONTROLS, UNO
6. LIGHT SWITCHES IN GUESTROOM BATHROOMS TO BE MOUNTED @ 48" AFF TO CENTERLINE OF CONTROLS, UNO
7. IN ADA ROOMS AT LEAST ONE OUTLET & DATA CONNECTION FOR USE BY GUESTS MUST BE MOUNTED BETWEEN 15" & 48" AFF AND PROVIDE A CLEAR FLOOR AREA OF 30"x48" IN FRONT OF OUTLET
8. ALL DEVICES SHALL BE OFFSET SO THAT NO DEVICE IN ADJACENT GUESTROOMS ARE BACK TO BACK WITH LESS THAN 2" CLEARANCE BETWEEN THE REAR OF EACH J BOX. OFFSET SHALL BE 6" CLEAR WHERE REQ'D. GC TO COORDINATE ALL OPENINGS IN CASEWORK AS REQ'D.
9. ALL CONTROLS FOR USE BY GUESTS MUST BE MOUNTED B/W 15" AFF & 48" AFF. OPERABLE CONTROLS LOCATED OVER AN OBSTRUCTION DEEPER THAN 10" MUST BE MOUNTED NO HIGHER THAN 48" AFF. IF A CONFLICT EXISTS BETWEEN THE ELECTRICAL LAYOUT SHOWN ON THIS SHEET AND THE ELECTRICAL ENGINEER'S DRAWING CONCERNING PLACEMENT AND/OR ARRANGEMENT OF DEVICES, GC SHALL CONTACT ARCHITECT PRIOR TO CONSTRUCTION FOR CLARIFICATION.
11. SEE GUESTROOM ELEVATIONS THIS SHEET FOR OUTLET AND SWITCH HEIGHTS. UNLESS HEIGHT IS NOTED ON ELECTRICAL PLAN THIS SHEET GUESTROOM ELEVATIONS PROVIDED TO SHOW ELECTRICAL OUTLET AND SWITCH HEIGHTS ONLY. SEE D DRAWINGS FOR ALL INFO RELATED TO FIRE MOUNTING HEIGHTS AND FINISHES.
12. ALL GYP BOARD AT WET WALL LOCATIONS TO BE MOISTURE RESISTANT.

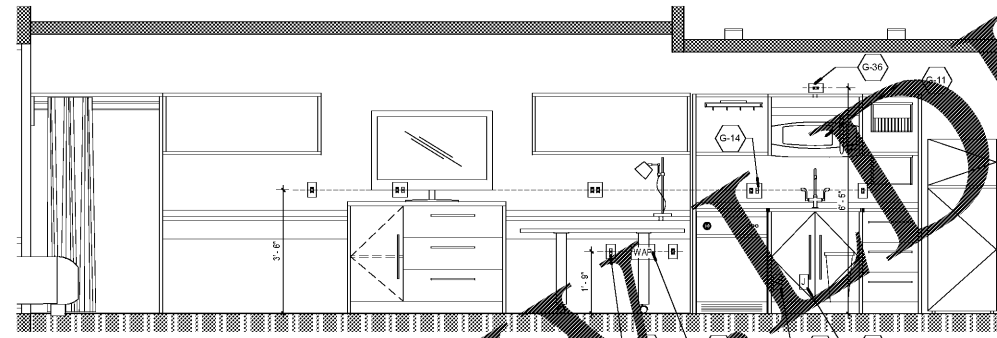
GUESTROOM KEYNOTES	
Keynote Value	Keynote Text
G-3	IN BATHROOM LOCATIONS ONLY. LIGHT SWITCH EQUIPPED WITH NIGHT-LIGHT - MAINTAIN 2" DISTANCE FROM ALL OTHER DEVICES MOUNTED 50" TOP OF SWITCH IS 48" MAX AFF
G-4	BLACK OUT ROLLER SHADES
G-8	CEILING MOUNTED DRAPERY ROD - PROVIDE BLOCKING AS REQ'D
G-10	DEDICATED CIRCUIT FOR DISHWASHER
G-11	RANGE TOP STYLE MICROWAVE AFFIXED TO WALL
G-14	SWITCH CONTROLLING GARBAGE DISPOSAL
G-15	DEDICATED CIRCUIT FOR GARBAGE DISPOSAL
G-25	EXTEND J BOX, DEVICE & COVER PLATE FLUSH W/ MILLWORK BACK PANEL
G-28	DOORBELL ON/OFF SWITCH (HEARING IMPAIRED ROOMS ONLY); PROVIDE SIGNAGE AS REQ'D
G-32	GC TO PROVIDE BLOCKING TO RECEIVE ITEM INDICATED - EXTEND FULL LENGTH OF OBJECT
G-33	GC TO COORDINATE W/ FIXTURE FABRICATOR WHERE NECESSARY TO PROVIDE PROPER BLOCKING IN WALL FOR ITEM KEYNOTED
G-36	OUTLET ABOVE MICROWAVE - REFER TO ROOM ELEVATION. MOUNT DEVICE HORIZONTALLY. FACE PLATE TO BE WHITE
G-44	WHEN AN OPTIONAL WIRED CONNECTION FOR GUEST IS ALSO PROVIDED, ANOTHER CAT5E/6 CABLE TERMINATED ON AN RJ45 RJ45 FEMALE JACK MUST BE PROVIDED ON THE WALL BELOW THE DESKWORK AREA. MAINTAIN 6" CLEARANCE FROM ALL OTHER OUTLETS AND DEVICES. A PATCH CORD SHOULD BE PROVIDED AT THE DESKTOP FOR GUEST CONVENIENCE.
G-45	EACH CABLE MUST HOMERUN BETWEEN THE GUESTROOM AND THE DF ON EACH FLOOR.
G-46	PROVIDE TI CATERGUE CABLE IN EVERY GUESTROOM ON THE WALL BELOW THE DESKWORK AREA TERMINATED ON AN RJ45 RJ45 FEMALE JACK FOR WIRELESS ACCESS POINT INFRASTRUCTURE (LINE POWERED WAP).
G-47	COORDINATE WAP LOCATION WITH CASEGOODS TO AVOID CONFLICT.
G-48	LAYOUT AND CONSTRUCTION IS TO START AT REFRIGERATOR HOLD DIM AND PROCEED UP THE WALL FROM THAT END. FINAL INSTALLATION IS SHELF AND ROD AT CLOSET. THESE ARE TO BE SCRIBED AT WALL AS REQ'D.
G-49	REFRIGERATOR
G-50	UNDER-COUNTER DISHWASHER



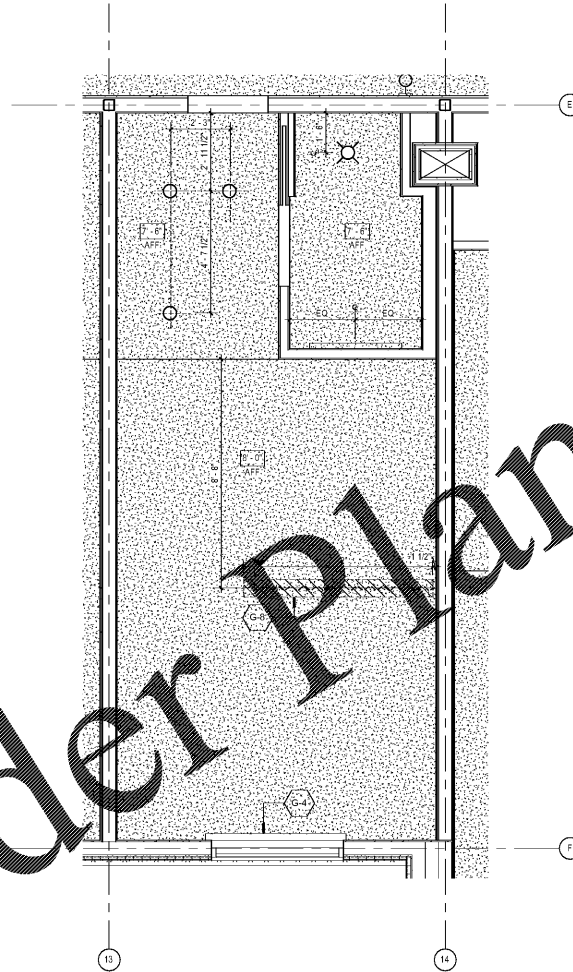
**QUEEN STUDIO ELEV B**  
1/2" = 1'-0"



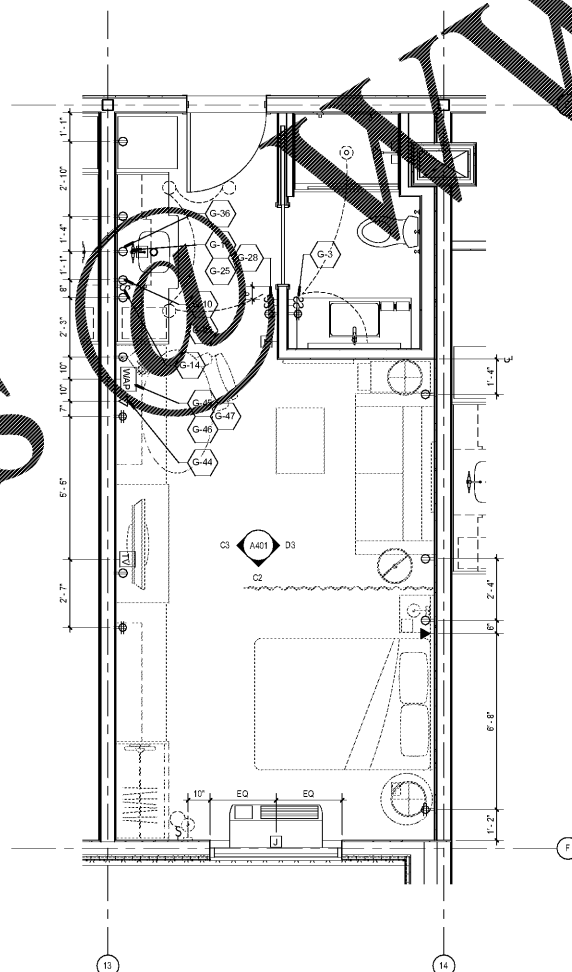
**QUEEN STUDIO ELEV C**  
1/2" = 1'-0"



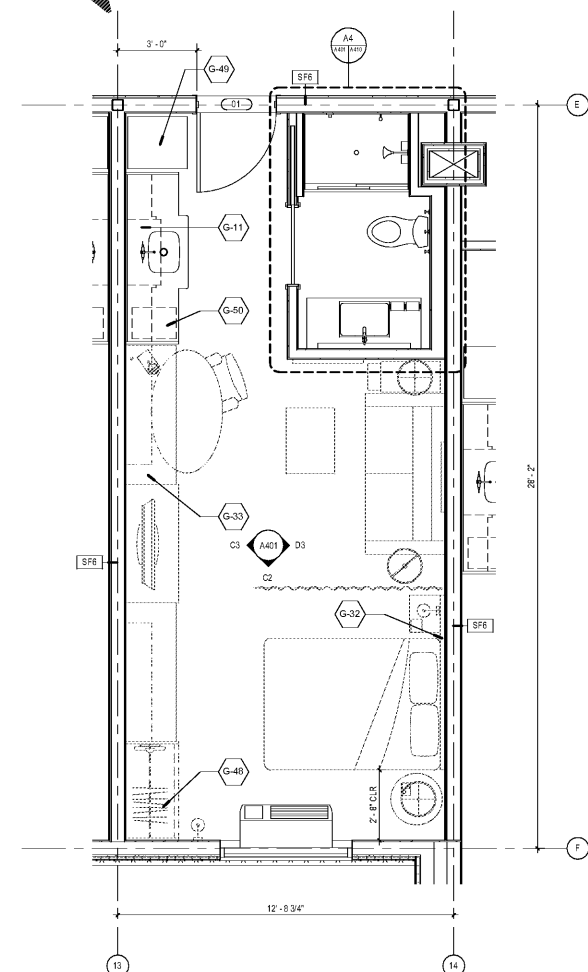
**QUEEN STUDIO ELEV A**  
1/2" = 1'-0"



**QUEEN STUDIO RCP**  
3/8" = 1'-0"



**QUEEN STUDIO ELECTRICAL PLAN**  
3/8" = 1'-0"



**QUEEN STUDIO PLAN**  
3/8" = 1'-0"

WINDSOR AUGHTRY  
HOME2 ASHEVILLE  
380 AIRPORT RD.  
ASHEVILLE, NC 28704

SHEET ISSUE  
07/30/18  
FOR CONSTRUCTION

Revisions		
Number	Description	Date

PRINCIPAL IN CHARGE: BZ  
PROJECT ARCHITECT: BZ  
DRAWN BY: BT

SHEET TITLE:  
**GUESTROOM  
PLANS - QUEEN  
STUDIO**

SHEET NO:  
**A401**

PROJ. NO.  
017378.00

Order Plans

www.OrderPlans.com