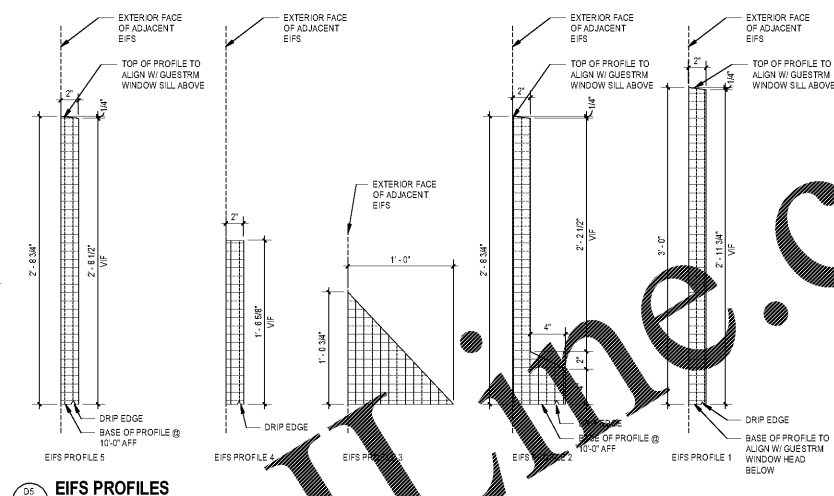
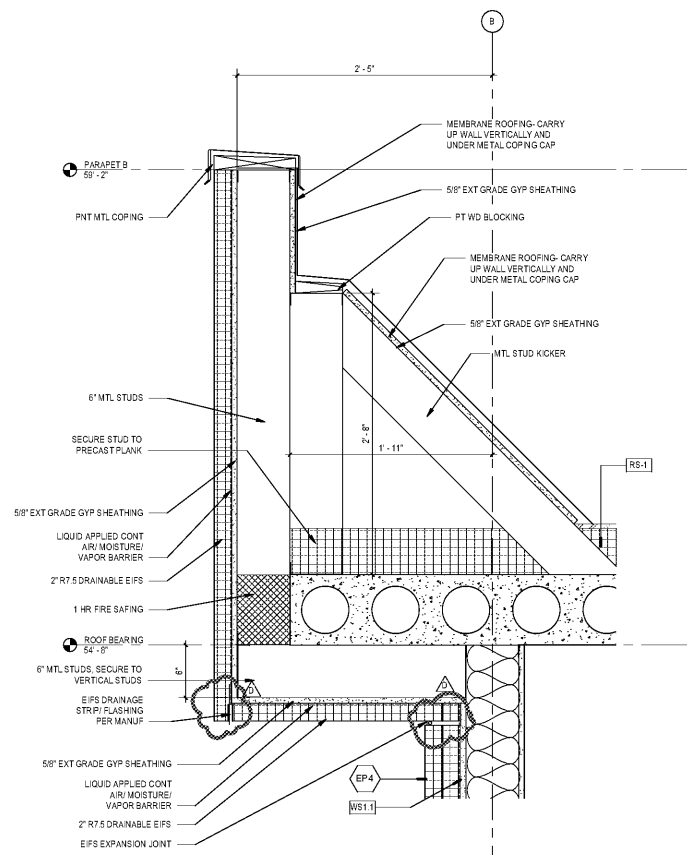


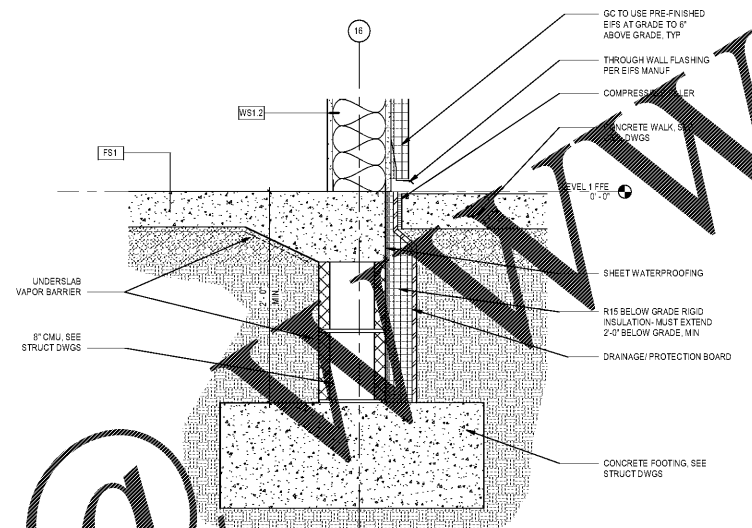
PRECAST PROFILES
1 1/2" x 1'-0"



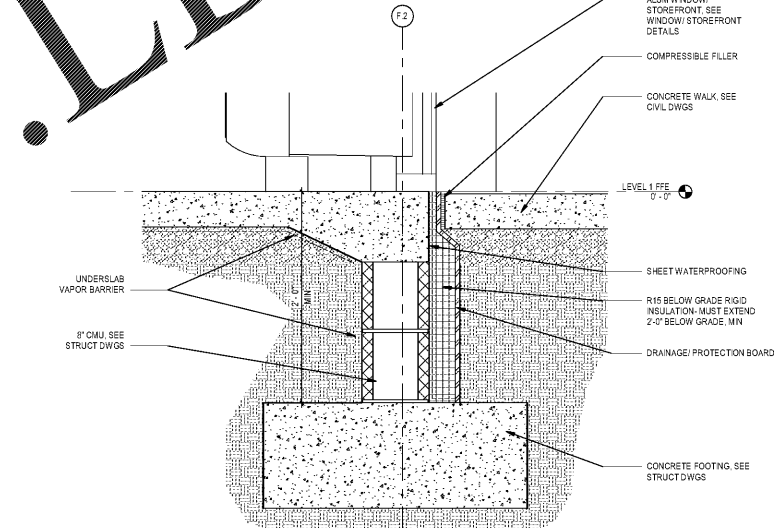
EIFS PROFILES
1 1/2" x 1'-0"



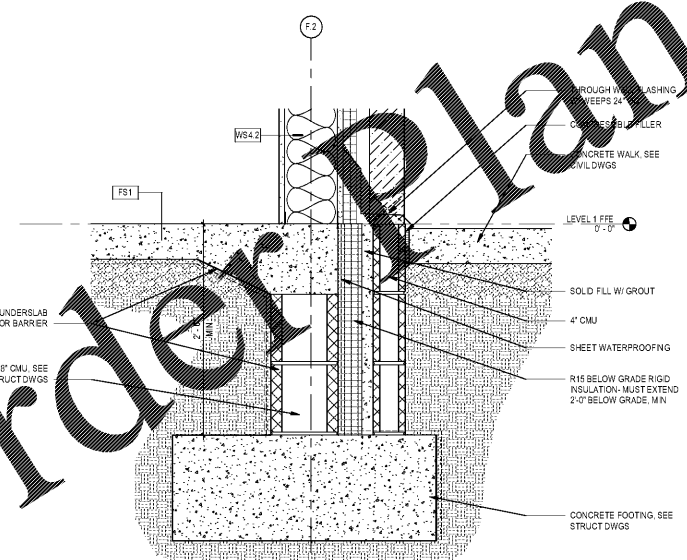
PARAPET DTL G
1 1/2" x 1'-0"



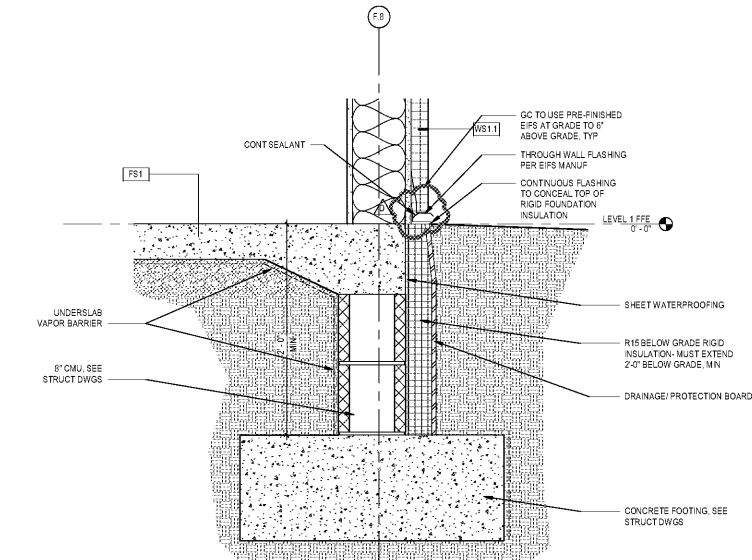
TYP FOOTING DTL E
1 1/2" x 1'-0"



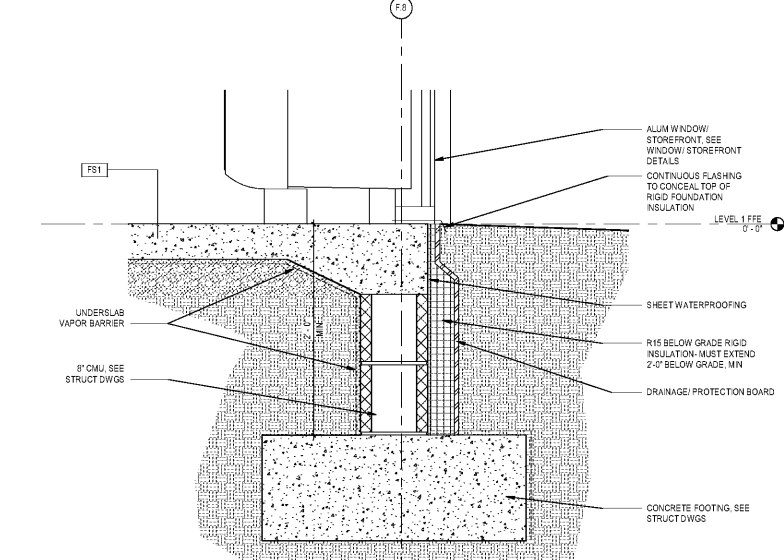
TYP FOOTING DTL D
1 1/2" x 1'-0"



TYP FOOTING DTL C
1 1/2" x 1'-0"



TYP FOOTING DTL B
1 1/2" x 1'-0"



TYP FOOTING DTL A
1 1/2" x 1'-0"



WINDSOR AUGHTRY
HOME2 ASHEVILLE
380 AIRPORT RD.
ASHEVILLE, NC 28704

SHEET ISSUE
07/30/18
FOR CONSTRUCTION

Revisions		
Number	Description	Date
D	Addendum 4-Big Question Responses	10/3/18

PRINCIPAL IN CHARGE: BZ
PROJECT ARCHITECT: BT
DRAWN BY: BT

SHEET TITLE:
WALL SECTION
DETAILS

SHEET NO:
PROJ. NO. 017378.00

A362

ALL DIMENSIONS UNLESS OTHERWISE NOTED.
 ALL FINISHES UNLESS OTHERWISE NOTED.
 ALL MATERIALS UNLESS OTHERWISE NOTED.
 ALL WORK SHALL BE IN ACCORDANCE WITH THE 2015 INTERNATIONAL RESIDENTIAL CODE BOOK (IRC) AND THE 2015 INTERNATIONAL BUILDING CODE (IBC).
 ALL WORK SHALL BE IN ACCORDANCE WITH THE 2015 INTERNATIONAL MECHANICAL CODE (IMC) AND THE 2015 INTERNATIONAL PLUMBING AND MECHANICAL CODE (IPMC).
 ALL WORK SHALL BE IN ACCORDANCE WITH THE 2015 INTERNATIONAL ELECTRICAL CODE (IEC) AND THE 2015 INTERNATIONAL WIRE AND CABLE CODE (IWCC).
 ALL WORK SHALL BE IN ACCORDANCE WITH THE 2015 INTERNATIONAL FIRE AND ALARM CODE (IFAC) AND THE 2015 INTERNATIONAL FIRE AND ALARM CODE (IFAC).
 ALL WORK SHALL BE IN ACCORDANCE WITH THE 2015 INTERNATIONAL SCHEDULE OF MATERIALS (ISM) AND THE 2015 INTERNATIONAL SCHEDULE OF MATERIALS (ISM).
 ALL WORK SHALL BE IN ACCORDANCE WITH THE 2015 INTERNATIONAL SCHEDULE OF MATERIALS (ISM) AND THE 2015 INTERNATIONAL SCHEDULE OF MATERIALS (ISM).