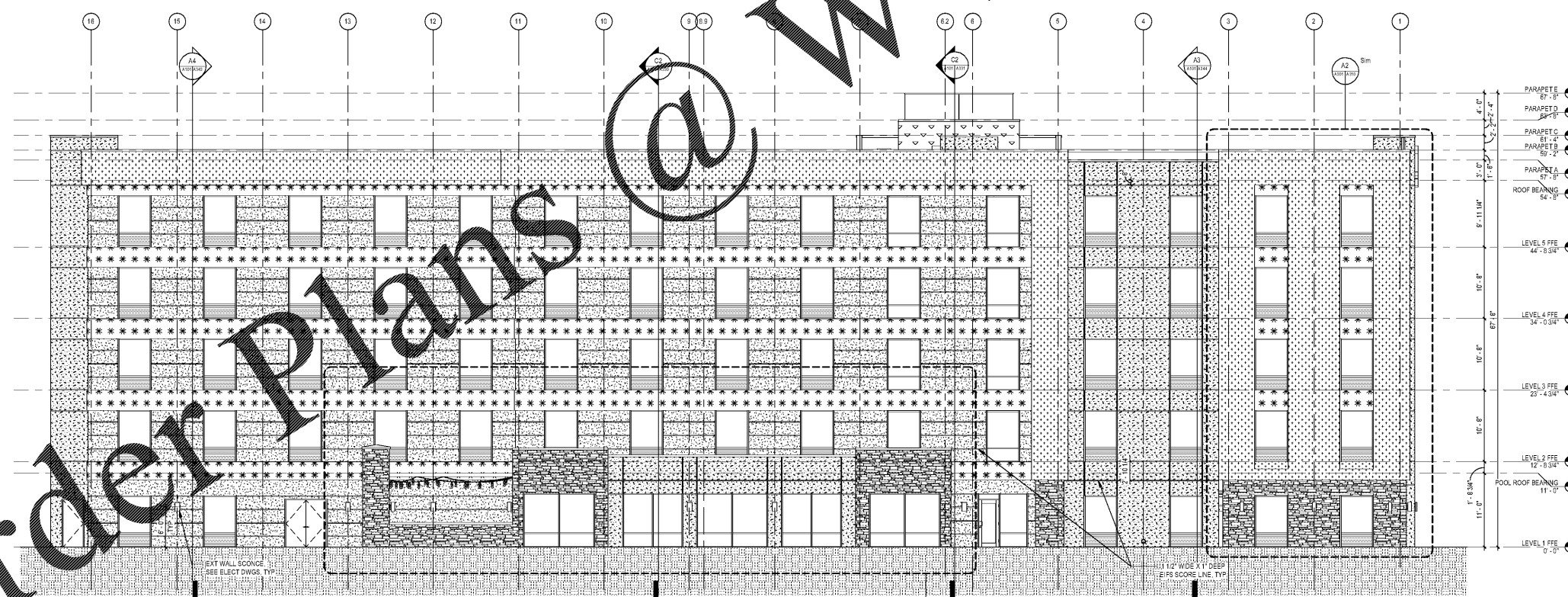


**C1 PLAN SOUTH ELEVATION**  
1/8" = 1'-0"



**A1 PLAN NORTH ELEVATION**  
1/8" = 1'-0"

**BLDG MATERIALS LEGEND**

- ARRISGRANT FULL BED STONE  
PRODUCT: SHADOW STONE  
COLOR: DRIFTWOOD
- EIFS COLOR 1: BENJAMIN MOORE BARREN PLAN  
2111-50
- EIFS COLOR 2: BENJAMIN MOORE STARDUST  
2108-40
- EIFS COLOR 3: YELLOW HIGHLIGHTER  
2021-40
- EIFS COLOR 4: BENJAMIN MOORE CHANTILLY LACE  
2121-10
- EIFS COLOR 4: BENJAMIN MOORE GENTLEMAN'S GRAY  
2062-20

**DEVELOPMENT DATA BLOCK**

- Name: HOME2 ASHEVILLE
- Project: 380 AIRPORT RD, ARDEN, NC 28704
- Contact: MCMILLAN PAZDAN SMITH ARCHITECTURE
- Brant T. Padden
- 328 W. Wilson Blvd
- Chapel Hill, NC 27513
- Phone: 919.967.2033
- Planning District: HD
- Building Height: 54'-0" per UDO definition
- Number of Stories: 5
- Building Area:
  - Level 1: 15,460 sf
  - Levels 2-5: 13,840 sf
  - Total: 70,020 sf

**DEVELOPMENT FENESTRATION CALCS**

- PLAN SOUTH ELEVATION (FACADE FACING)
- PRIMARY ACCESS CORRIDOR (A)
- APPROXIMATELY 5% OF GROUND LEVEL

**BUILDING ELEVATION NOTES**

1. PROVIDE EIFS CONTROL JOINTS AS REQUIRED BY EIFS MANUFACTURER



WINDSOR AUGHTRY  
**HOME2 ASHEVILLE**  
380 AIRPORT RD.  
ARDEN, NC 28704

SHEET ISSUE  
07/30/18  
FOR CONSTRUCTION

Revisions		
Number	Description	Date
C	Addendum 3-BQ Question Responses	09/27/18
D	Addendum 4-BQ Question Responses	10/03/18

PRINCIPAL IN CHARGE: BZ  
PROJECT ARCHITECT: BZ  
DRAWN BY: BT

SHEET TITLE:  
**BUILDING ELEVATIONS**

SHEET NO. PROJ. NO.  
017378.00

**A301**