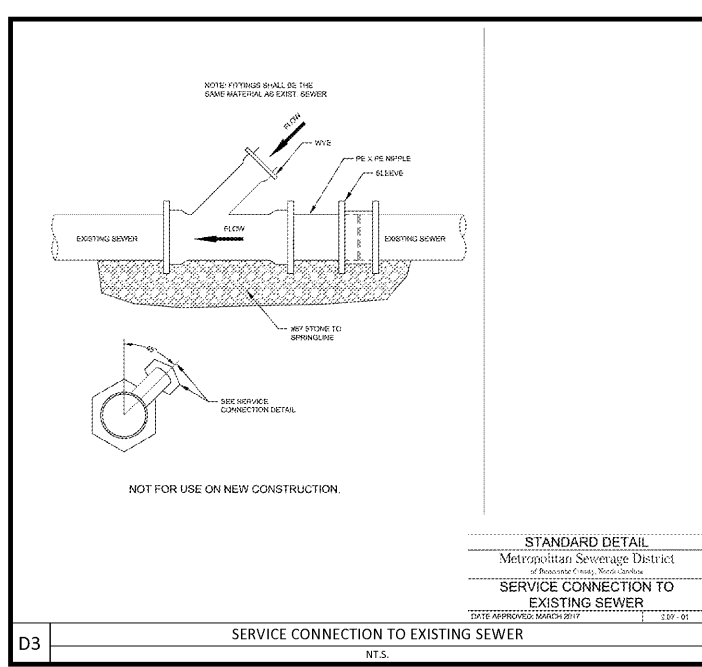
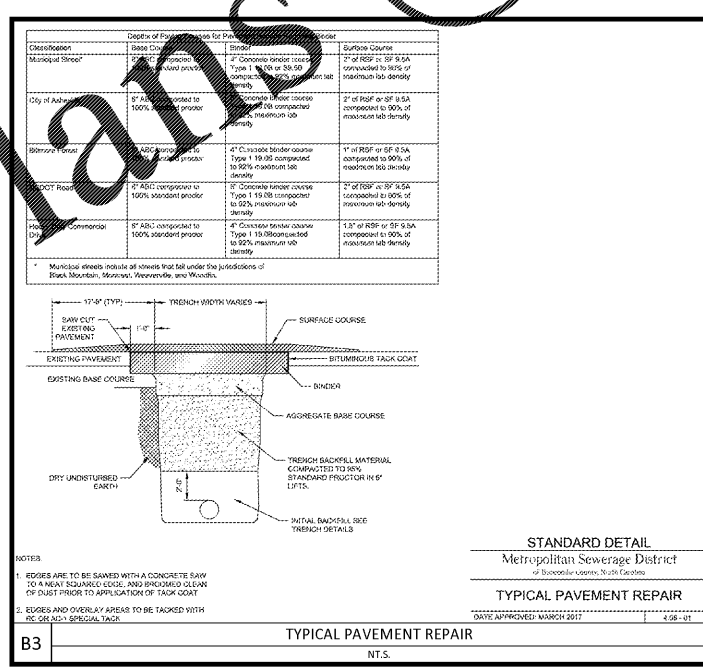
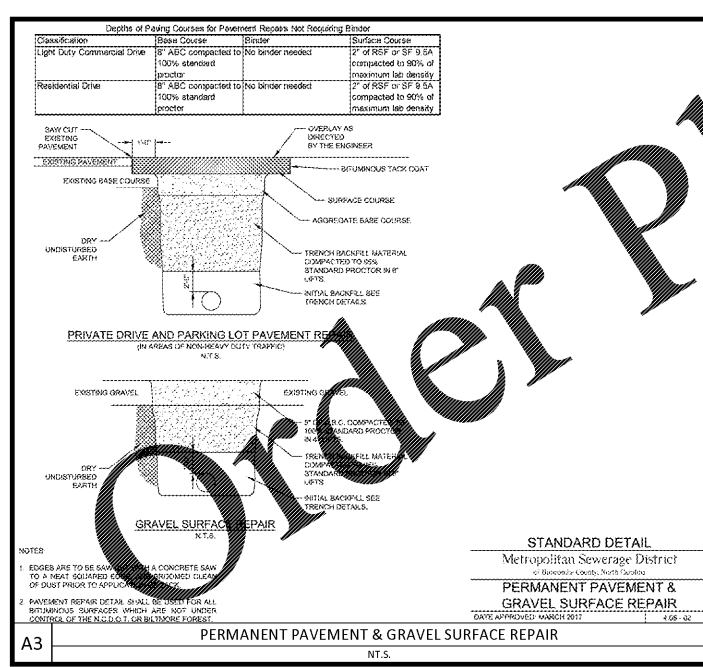
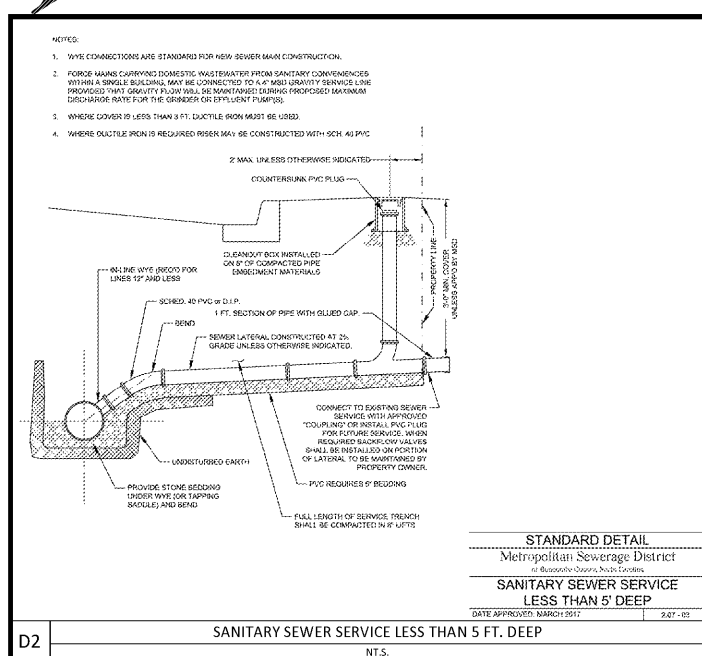


TYPICAL TRENCH DETAIL FOR (DIP) DUCTILE IRON PIPE - 2
N.T.S.

STANDARD DETAIL
Metropolitan Sewerage District
of Beaufort County, North Carolina
DATE APPROVED: MARCH 2017 2.08-02

Ductile Iron Pipe	Minimum Depth of Cover for Ductile Iron Pipe w/ Cement Lining				
	Year 1	Year 2	Year 3	Year 4	Year 5
12" DIA.	1.5	1.5	1.5	1.5	1.5
15" DIA.	1.5	1.5	1.5	1.5	1.5
18" DIA.	1.5	1.5	1.5	1.5	1.5
21" DIA.	1.5	1.5	1.5	1.5	1.5
24" DIA.	1.5	1.5	1.5	1.5	1.5
27" DIA.	1.5	1.5	1.5	1.5	1.5
30" DIA.	1.5	1.5	1.5	1.5	1.5
36" DIA.	1.5	1.5	1.5	1.5	1.5
42" DIA.	1.5	1.5	1.5	1.5	1.5
48" DIA.	1.5	1.5	1.5	1.5	1.5
54" DIA.	1.5	1.5	1.5	1.5	1.5
60" DIA.	1.5	1.5	1.5	1.5	1.5
66" DIA.	1.5	1.5	1.5	1.5	1.5
72" DIA.	1.5	1.5	1.5	1.5	1.5
78" DIA.	1.5	1.5	1.5	1.5	1.5
84" DIA.	1.5	1.5	1.5	1.5	1.5
90" DIA.	1.5	1.5	1.5	1.5	1.5
96" DIA.	1.5	1.5	1.5	1.5	1.5
102" DIA.	1.5	1.5	1.5	1.5	1.5
108" DIA.	1.5	1.5	1.5	1.5	1.5
114" DIA.	1.5	1.5	1.5	1.5	1.5
120" DIA.	1.5	1.5	1.5	1.5	1.5



WANNALD ENGINEERING
www.wannalddesign.com

CCAD ENGINEERING
Greenville | Charleston
803 Poplar Creek Drive
864-250-9999 | E: 864-250-5056
www.ccadengineering.com

MSD SANITARY SEWER SERVICE DETAILS
DATE: 01/08/2018
SCALE: N.T.S.
DRAWN: CCAD
CHECKED: WED
PROJECT #: C03082E

**Airport Road Hotel
Site Development Plans
Arden, North Carolina**

MSD SANITARY SEWER SERVICE DETAILS
DATE: 01/08/2018
SCALE: N.T.S.
DRAWN: CCAD
CHECKED: WED
PROJECT #: C03082E

MSD SANITARY SEWER SERVICE DETAILS
DATE: 01/08/2018
SCALE: N.T.S.
DRAWN: CCAD
CHECKED: WED
PROJECT #: C03082E