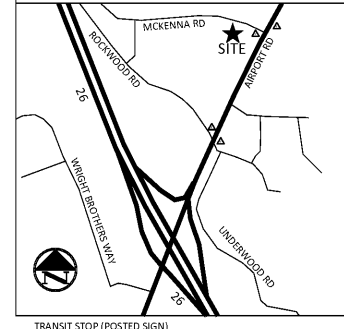


VICINITY MAP SCALE: 1"=1,000'



DEVELOPMENT DATA

LOCATION ARDEN, NC 28704	HEIGHT MAXIMUM AVERAGE HEIGHT = 80 FT.
TAX MAP SERVICE No. 9643-76-7154	ROAD FRONTAGE & ACCESS AIRPORT ROAD FRONTAGE = 80.35'
ADDRESS 390 AIRPORT ROAD	CROSS ACCESS AGREEMENT WITH ADJACENT PARCEL (ON GARDEN), NO ADDITIONAL REQUIRED DRIVE ACCESS
OWNER ASHEVILLE HOSPITALITY, LLC 40 W. BROAD STREET, SUITE 500 GREENVILLE, SC 29601	BUFFERS STREET TREES ALONG AIRPORT ROAD (MIN. 10' LEVEL LENGTH)
ACREAGE TOTAL = 1.84 AC DISTURBED = 1.84 AC IMPERVIOUS = 1.35 AC (73.6%) - 58,880 SQ.FT.	FEMA FIRM PANEL No. 45045 ZONE X
PROJECT CONTACT ALEX CAMPBELL, AIA MCMILLAN PAZDAN SMITH ARCHITECTURE 678.619.5312	OFF-STREET PARKING & LOADING MIN. REQ'D PARKING: 1 SPACE PER 2 ROOMS = 56 SPACES MAX. REQ'D PARKING: 1 SPACE PER 1 ROOM = 112 SPACES PROVIDED = 95
LOCAL OFFICE 34 COMMERCE STREET ASHEVILLE, NC 28801	ACCESSIBLE PARKING REQ'D = 5 SPACES ACCESSIBLE PARKING PROVIDED = 6 SPACES
ZONING HIGHWAY BUSINESS DISTRICT (HB) PLANNING EXPANSION DISTRICT (LOD/EXP)	BIOMASS PARKING REQ'D (5% TOT. VEH. PARKING) = 6 SPACES BIOMASS PARKING PROVIDED = 9 SPACES
FACTORY GROSS FLOOR AREA = 37,702 SF BUILDING FOOTPRINT = 13,774 SF SUITS = 800015 BUILDING MAXIMUM HEIGHT = 64' - 8" (5-STORIES)	OPEN SPACE REQUIRED OPEN SPACE = 15% PROVIDED OPEN SPACE = 17.4% (14,079 SQ.FT.)
BACKS HEIGHT = 35 FT. E = 15 FT. REAR = 25 FT.	LIGHTING & SIGNAGE ANY/JLL LIGHTING OR SIGNAGE TO BE APPROVED BY CITY OF ASHEVILLE PRIOR TO INSTALLATION
	STEEP SLOPE & RIDGE TOP DEVELOPMENT COMPLIANCE EXISTING LAND SLOPE AVERAGE EQUAL TO 11.1 (%) STEEP SLOPE AND RIDGE TOP COMPLIANCE PLAN SHEET NOT REQUIRED.

LANDSCAPE PLANTING LEGEND

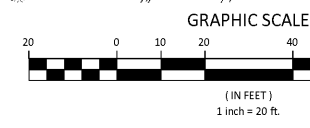
STREET TREES		PARKING LOT LANDSCAPING	
SMALL-MATURING DECIDUOUS TREE	AMERICAN SMOKETREE	LARGE-MATURING DECIDUOUS TREE	WHITE ASH
LARGE EVERGREEN SHRUB		SMALL-MATURING DECIDUOUS TREE	BLACKHAW VIBURBUM
SMALL EVERGREEN SHRUB		LARGE EVERGREEN SHRUB	INKBERRY HOLLY
LARGE DECIDUOUS SHRUB		SMALL EVERGREEN SHRUB	MOUNTAIN PIERS
SMALL DECIDUOUS SHRUB		LARGE DECIDUOUS SHRUB	SPICEBUSH
		SMALL DECIDUOUS SHRUB	PURPLE BEAUTYBERRY
BUILDING IMPACT LANDSCAPING		PROPERTY LINE BUFFER	
LARGE-MATURING DECIDUOUS TREE	KENTUCKY COFFEE TREE	LARGE-MATURING DECIDUOUS TREE	
EVERGREEN TREE		SMALL-MATURING DECIDUOUS TREE	
LARGE EVERGREEN SHRUB	BEAKED HAZELNUT	EVERGREEN TREE	
LARGE DECIDUOUS SHRUB	ENGLISH-JAPANESE YEW	LARGE EVERGREEN SHRUB	
		SMALL EVERGREEN SHRUB	
		LARGE DECIDUOUS SHRUB	
		SMALL DECIDUOUS SHRUB	

NOTE: ALL PLANTING SPECIES TO BE CHOSEN FROM CITY OF ASHEVILLE RECOMMENDED SPECIES LIST.

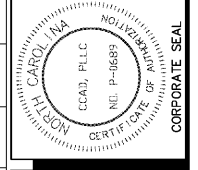
Ordinance	ID	Unit	Trees Required Per Unit		Species	Trees Required	Shrubs Required Per Unit		Shrubs Required
			Number per Unit	Unit			Number per Unit	Unit	
Street Trees	Street Frontage Length (ft)	80	1	30	Non-Specific	3	0	0	0
Parking Lot Landscaping	Vehicular Use Area (sq.ft.)	39,566	1	1500	Deciduous	27	4	1500	106
Building Impact Landscaping	Building Footprint Area	16,023	1	1000	Non-Specific	17	2	1000	33
						Total Trees Required	71	Total Shrubs Required	158
						Total Trees Provided	70	Total Shrubs Provided	158

Landscaping Row	Area (sq. ft.)	Trees Planted	Shrubs Planted
L-1	6131	8	26
L-2	1428	1	7
L-3	397	3	3
L-4	597	10	6
L-5	2447	0	13
L-6	4368	13	12
L-7	2798	16	32
L-8	102	1	1
L-9	252	0	7
L-10	215	0	11
L-11	137	0	4
L-12	370	1	11
L-13	307	0	11
L-14	302	0	7
L-15	77	0	5
L-16	364	1	5
L-17	481	0	16
Totals		48	117

100' AIRPORT ROAD (EXISTING ASPHALT ROAD)



NO.	DATE	CITY COUNCIL	DIVISION	REVISION	OWNER'S REQUEST
A	01/08/18				INITIAL
B	08/09/18				SITE DESIGN MODIFICATION
C	08/22/18				REV PER HILTON AD. UTTERA WASTE SYSTEM
D	08/30/18				REV PER COMMENTS FROM ARCHITECT
E	09/14/18				FINAL TRC SUBMITTAL
F	09/27/18				ADDENDUM C



CCAD ENGINEERING
Greenville | Charleston
803 Poplar Creek Drive
864.250.9999 | E: 864.250.9056
www.ccadengineering.com

Airport Road Hotel
Site Development Plans
Arden, North Carolina

LANDSCAPING PLAN
DATE: 01/08/2018
SCALE: 1" = 20'
DRAWN: CCAD
CHECKED: WBC
PROJECT #: C03082E

C4.31

Order Plans @ WWW.Archline.com

7/16/2018 10:57:25
SOUTHBRIDGE ASSOCIATES, LLC
DB 3179, PAGE 822
18 OF 18, PAGE 17-18
CITY OF ASHEVILLE ZONING 118

PROPOSED HOTEL
13,774 SQ.FT. FOOTPRINT
FFE = 2255
RN 9643-76-7154
ROCKWOOD ROAD, LLC
08/29/18 PAGE 124
PE 08, PAGE 108
CITY OF ASHEVILLE ZONING 118 (EXISTING)
ADDITIONAL ZONING COMPLIANCE: LODS EXP (PROPOSED)

N: 636137.5338
E: 947520.1527

N: 636062.1171
E: 947967.6147

GRASS GARDEN
RESTAURANT BUILDING
7,840 SQ.FT.

TACTILE WARNING
PANEL
FOR BLIND
PEDESTRIANS