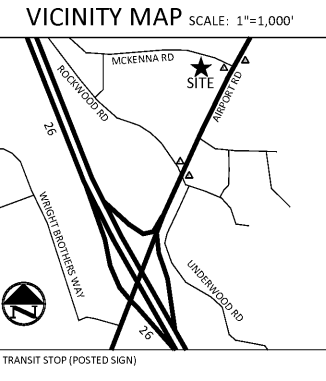


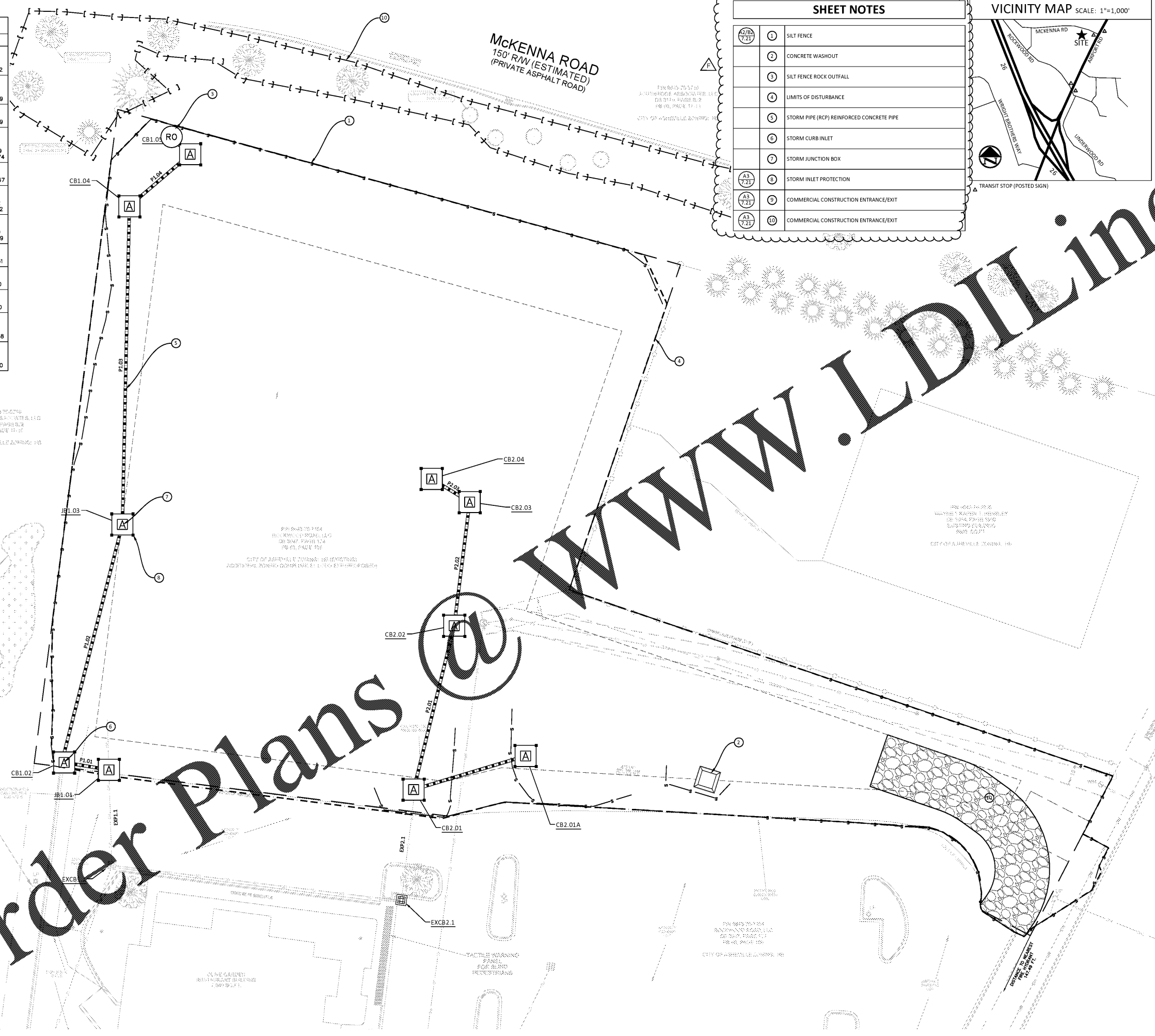
Structure Table	
Structure Name	Structure Details
CB1.02	RIM = 2252.02 P1.02 INV IN = 2243.22 P1.01 INV OUT = 2243.02
CB1.04	RIM = 2252.05 P1.04 INV IN = 2247.29 P1.03 INV OUT = 2247.09
CB1.05	RIM = 2252.06 P1.04 INV OUT = 2247.89
CB2.01	RIM = 2252.51 P2.01 INV IN = 2248.94 P2.01A INV IN = 2247.19 EXP2.1 INV OUT = 2246.74
CB2.01A	RIM = 2253.53 P2.01A INV OUT = 2248.67
CB2.02	RIM = 2253.94 P2.02 INV IN = 2247.52 P2.01 INV OUT = 2247.32
CB2.03	RIM = 2254.91 P2.03 INV IN = 2247.99 P2.02 INV OUT = 2247.79
CB2.04	RIM = 2253.78 P2.03 INV OUT = 2248.31
EXCB1.1	RIM = 2250.10 EXP1.1 INV IN = 2240.90
EXCB2.1	RIM = 2250.40 EXP2.1 INV IN = 2246.50
JB1.01	RIM = 2252.19 P1.01 INV IN = 2241.68 EXP1.1 INV OUT = 2241.48
JB1.03	RIM = 2255.34 P1.03 INV IN = 2245.90 P1.02 INV OUT = 2245.70

SHEET NOTES	
①	SILT FENCE
②	CONCRETE WASHOUT
③	SILT FENCE ROCK OUTFALL
④	LIMITS OF DISTURBANCE
⑤	STORM PIPE (RCP) REINFORCED CONCRETE PIPE
⑥	STORM CURB INLET
⑦	STORM JUNCTION BOX
⑧	STORM INLET PROTECTION
⑨	COMMERCIAL CONSTRUCTION ENTRANCE/EXIT
⑩	COMMERCIAL CONSTRUCTION ENTRANCE/EXIT



DEVELOPMENT DATA	
LOCATION	ARDEN, NC 28704
TAX MAP SERVICE No.	9643-76-7154
ADDRESS	390 AIRPORT ROAD
OWNER	ASHVILLE HOSPITALITY, LLC 40 W. BROAD STREET, SUITE 500 GREENVILLE, SC 29601
ACREAGE	TOTAL = 1.84 AC DISTURBED = 1.84 AC IMPERVIOUS = 1.35 AC (73.6%) - 56,180 SQ.FT.
PROJECT CONTACT	ALEX AMBELL, AIA MILLAN HAZDAR, WITH ARCHITECTURE 78.619.5311
PROJECT ADDRESS	34 COMMERCE STREET ASHVILLE, NC 28801
ZONING	HIGHWAY BUSINESS DISTRICT (HB) LODGING EXPANSION DISTRICT (LODG EXP)
FACILITY	BUILDING GROSS FLOOR AREA = 70,820± SF BUILDING FOOTPRINT = 15460± SF UNITS = 112 ROOMS BUILDING MAXIMUM HEIGHT = 64' - 8" (5-STORIES)
SETBACKS	FRONT = 35 FT. SIDE = 15 FT. REAR = 25 FT.

Pipe Table			
Pipe Name	Size	Length	Slope
EXP1.1	18	42.04	1.38%
EXP2.1	18	48.91	0.50%
P1.01	18	20.99	6.40%
P1.02	18	107.95	2.29%
P1.03	18	140.24	0.85%
P1.04	18	35.12	1.69%
P2.01	18	74.34	0.50%
P2.01A	18	51.47	2.89%
P2.02	18	54.84	0.50%
P2.03	18	19.55	1.62%



WWW.LDILLING.COM

Order Plans

NO.	DATE	CITY COUNCIL DIVISION	REVISION
A	01/08/18		INITIAL
B	08/09/18		SITE DESIGN MODIFICATION
C	08/22/18		REV PER HILTON AD. UTILITY WASTE SYSTEM
D	08/30/18		REV PER COMMENTS FROM ARCHITECT
E	09/14/18		REV PER COMMENTS FROM ARCHITECT
F	09/27/18		FINAL TRC SUBMITTAL

PROFESSIONAL SEAL  
ALEX AMBELL, AIA  
MILLAN HAZDAR, WITH ARCHITECTURE  
78.619.5311  
34 COMMERCE STREET  
ASHVILLE, NC 28801

PROFESSIONAL SEAL  
CCAD ENGINEERING  
Greenville | Charleston  
803 Poplar Creek Drive  
864.250.9899 | E: 864.250.9056  
www.ccadengineering.com

PROJECT:  
**Airport Road Hotel**  
Site Development Plans  
Arden, North Carolina

SHEET TITLE:  
**SWPPP PHASE II PLAN**  
DATE: 01/08/2018  
SCALE: 1" = 20'  
DRAWN: CCAD  
CHECKED: WBC  
PROJECT #: C03082E

C2.02