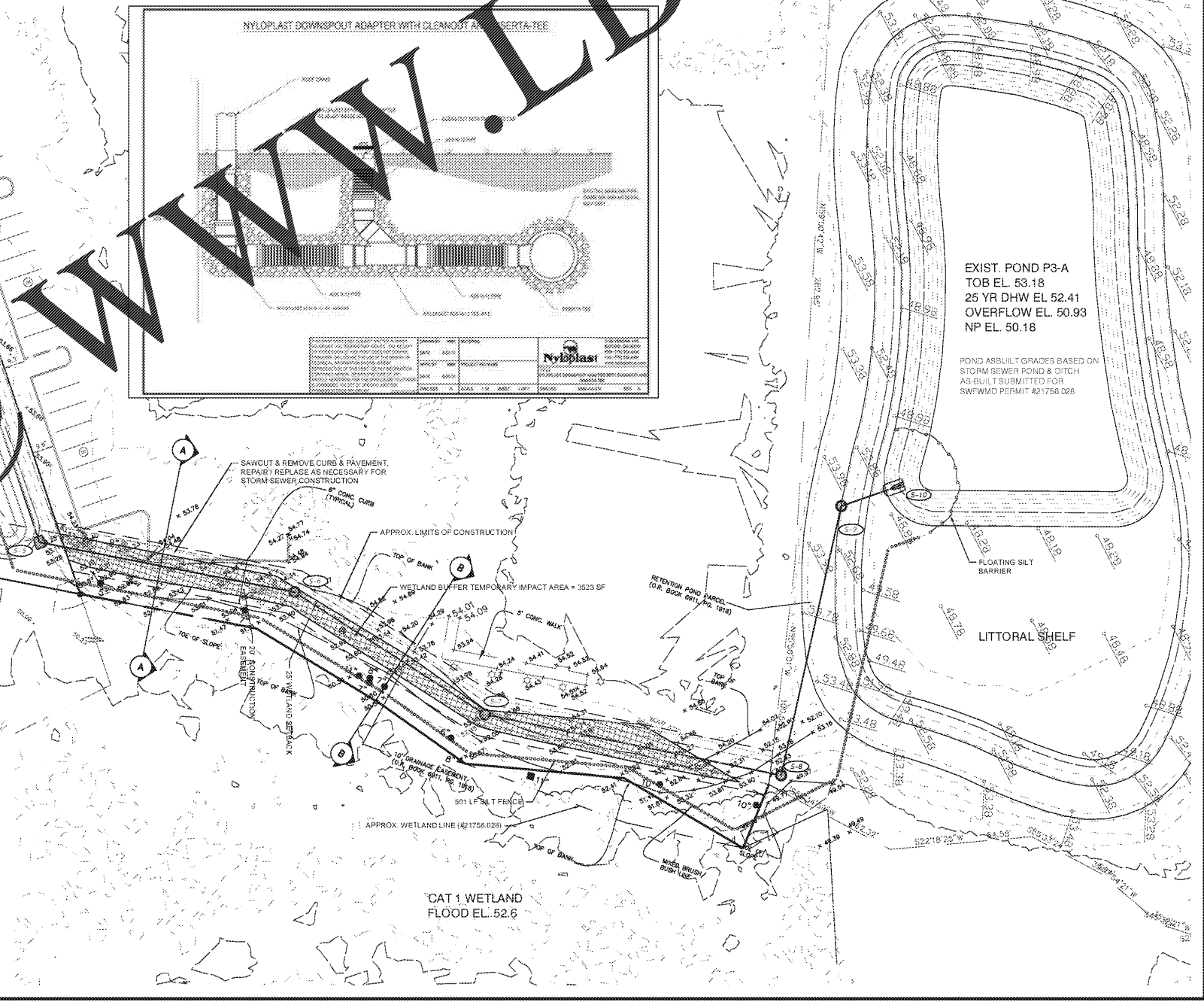
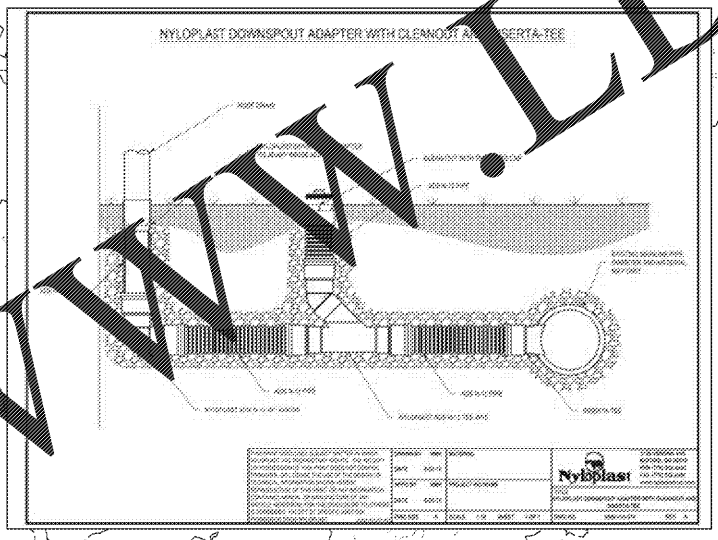


- LEGEND**
- PROPOSED INLET W/APRON
 - PROPOSED CURB INLET
 - PROPOSED METERED END SECTION
 - PROPOSED STORM MANHOLE
 - PROPOSED STORM DRAIN
 - DRAINAGE FLOW INDICATOR
 - PROPOSED GRADE ELEVATION (EDGE OF PAVEMENT UNLESS NOTED OTHERWISE)
 - EXISTING WETLAND LIMITS
 - DRAINAGE RIDGE LINE
- GRADING AND DRAINAGE NOTES**
1. ALL EXISTING STRUCTURES, UNLESS OTHERWISE NOTED TO REMAIN, FENCING, TREES, ETC., WITHIN CONSTRUCTION AREA SHALL BE REMOVED & DISPOSED OF OFF SITE. ANY BURNING ON SITE SHALL BE SUBJECT TO LOCAL ORDINANCES.
 2. ALL DRAINAGE STRUCTURES SHALL BE PRECAST.
 3. ALL DRAINAGE STRUCTURES AND STORM SEWER PIPES SHALL MEET HEAVY DUTY TRAFFIC (H29) LOADING AND BE INSTALLED ACCORDINGLY. STORM SEWER INLETS WITHIN THE PAVEMENT AREAS SHALL HAVE GRATE ANGLE SEATS FOR TRAFFIC BEARING CAPACITY.
 4. CONTRACTOR SHALL NOTIFY ALL UTILITY COMPANIES HAVING UNDERGROUND UTILITIES ON SITE OR IN RIGHT-OF-WAY PRIOR TO EXCAVATION. CONTRACTOR SHALL CONTACT UTILITY LOCATING COMPANY AND LOCATE ALL UTILITIES PRIOR TO GRADING START.
 5. SITE GRADING SHALL NOT PROCEED UNTIL EROSION CONTROL MEASURES HAVE BEEN IN PLACE.
 6. GENERAL CONTRACTOR SHALL PROVIDE 2' x 2' x 8" THICK CONCRETE AFFRAN AT ALL CORNERS OUTSIDE BUILDING.
 7. ALL ROOF DRAINS TO BUILDING SHALL END 5' OUTSIDE THE BUILDING LIMITS. DOWNSPOUTS SHALL BE PROVIDED WITH A TEMPORARY FLUG AT THE END.
 8. ALL PIPE CULVERTS USED IN FOOT RIGHT-OF-WAY MUST BE STAMPED.
 9. ALL DISTURBED AREAS WITHIN FOOT R.O.W. SHALL BE SOODED. SEE LATER SHEETS FOR SPECIFICATIONS.
 10. ELEVATIONS ARE BASED ON NAVD (1988).
 11. THE ENTIRE PROJECT LIES WITHIN FLOOD ZONE "X" AND "A" PER FEMA MAP NO. 15020 0409 F FOR PASCO COUNTY, REV. 08/2014. (DF 15.02.B)
- GRADING ABBREVIATIONS**
- M.E.G. - MATCH EXISTING GRADE
 - B.O.W. - BOTTOM OF WALL
 - T.O.W. - TOP OF WALL
 - TOP/CONC. - TOP OF CONCRETE
 - DLW - DESIGN LOW WATER ELEVATION
 - SHW - SEASONAL HIGH WATER ELEVATION
- TREE LEGEND**
- OAK TREE (AS NOTED)
 - PALM TREE (AS NOTED)
 - MAPLE TREE (AS NOTED)



PRODUCT TABLE

QTY	STK #	RIM EL.	DESCRIPTION
P 5-1	54.00	54.00	18" Round Concrete Pipe - Type 9 with Rectangular Bottom
P 5-2	42.00	54.00	18" Round Concrete Pipe - Type 9 with Rectangular Bottom
P 5-3	425-001	54.00	24" Round Concrete Pipe - Type 9 with Rectangular Bottom
P 5-4	425-001	54.00	24" Round Concrete Pipe - Type 9 with Rectangular Bottom
P 5-5	425-052	54.00	24" Round Concrete Pipe - Type 9 with Rectangular Bottom
P 5-6	425-001	54.00	24" Round Concrete Pipe - Type 9 with Rectangular Bottom
P 5-7	425-001	54.00	24" Round Concrete Pipe - Type 9 with Rectangular Bottom
P 5-8	425-001	54.00	24" Round Concrete Pipe - Type 9 with Rectangular Bottom
P 5-9	425-001	54.00	24" Round Concrete Pipe - Type 9 with Rectangular Bottom
P 5-10	425-001	54.00	24" Round Concrete Pipe - Type 9 with Rectangular Bottom
P 5-11	425-052	54.00	24" Round Concrete Pipe - Type 9 with Rectangular Bottom

PIPE TABLE

QTY	STRT #	END#	DESCRIPTION	LENGTH	SLOPE	INV. UE	INV. LE
F 5-11	5-3	5-3	18" Round Concrete Pipe	209	0.20%	50.18	49.77
F 5-3	5-4	5-4	18" Round Concrete Pipe	47	0.20%	49.77	49.68
F 5-4	5-5	5-5	24" Round Concrete Pipe	191	0.28%	49.68	49.14
F 5-5	5-6	5-6	24" Round Concrete Pipe	118	0.20%	49.14	48.91
F 5-6	5-7	5-7	24" Round Concrete Pipe	103	0.20%	48.91	48.70
F 5-7	5-8	5-8	24" Round Concrete Pipe	137	0.20%	48.70	48.43
F 5-8	5-9	5-9	24" Round Concrete Pipe	125	0.20%	48.43	48.18
F 5-9	5-10	5-10	24" Round Concrete Pipe	24	4.17%	48.18	47.18
F 5-1	5-2	5-2	18" Round Concrete Pipe	123	0.20%	50.38	50.13
F 5-2	5-3	5-3	18" Round Concrete Pipe	179	0.20%	50.13	49.77

LINKS & ASSOCIATES
 5023 West Laurel Street
 Tampa, Florida 33607
 Tel: (813) 289-0339
 Fax: (813) 287-0574
 Lic. No. EB0004638
Engineers
Planners

DATE	07/23/2018
DESIGNED	DWD
DRAWN	DWM
CHECKED	DWD
JOB NO.	18095

WOODSPRING SUITES
CYPRESS CREEK

DRAINAGE PLAN

REVISIONS

David W. Ceslet
 P.E. No. 24760
SHEET
6

Order Plans @

WWW.DIline.com