

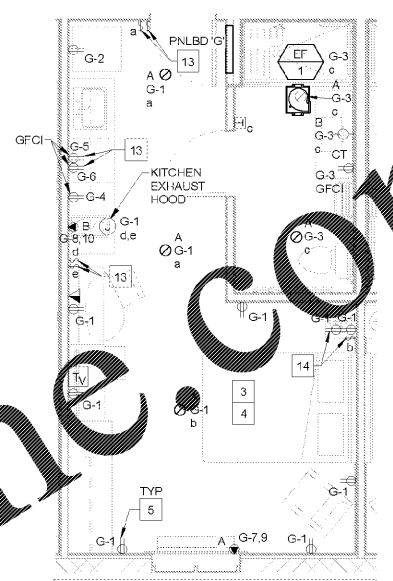
**WOODSPRING SUITES**  
 CYPRESS CREEK, FLORIDA  
 Pasco County  
 Cypress Creek, FL

Issues & Revisions:

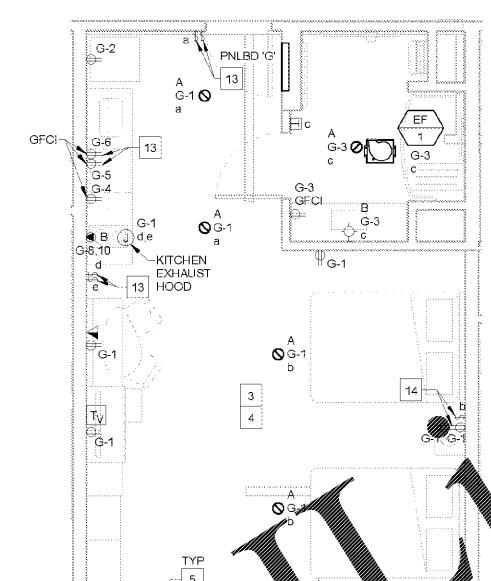
Proj. No.: 078761  
 Date: 10/05/2018

Sheet Name:  
**ELECTRICAL ENLARGED PLANS**

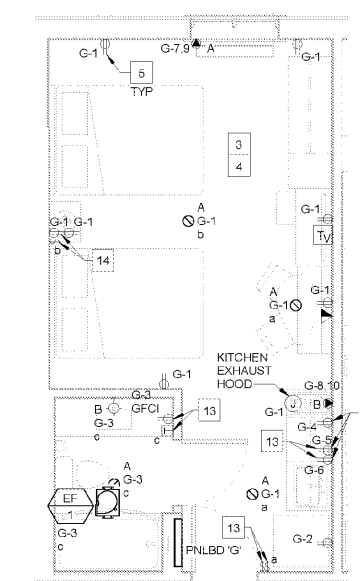
**E-5**



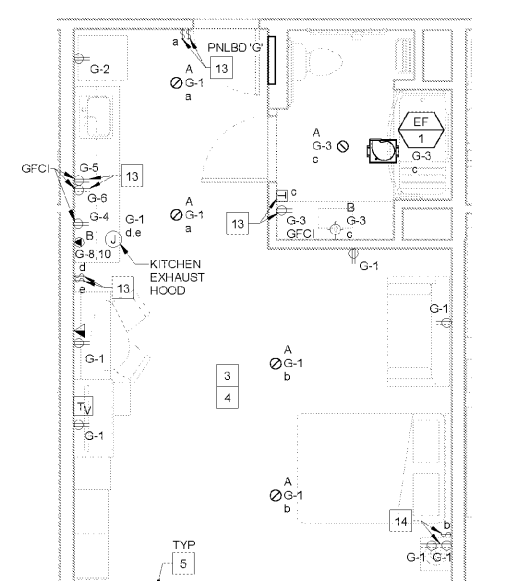
**6 ACC. QUEEN SUITE**  
 SCALE: 1/4" = 1'-0"



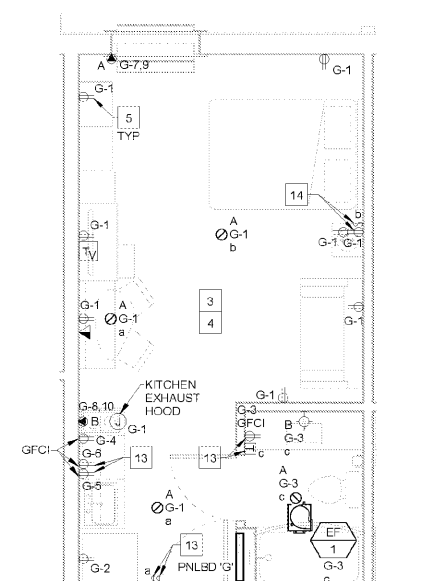
**8 DOUBLE QUEEN SUITE**  
 SCALE: 1/4" = 1'-0"



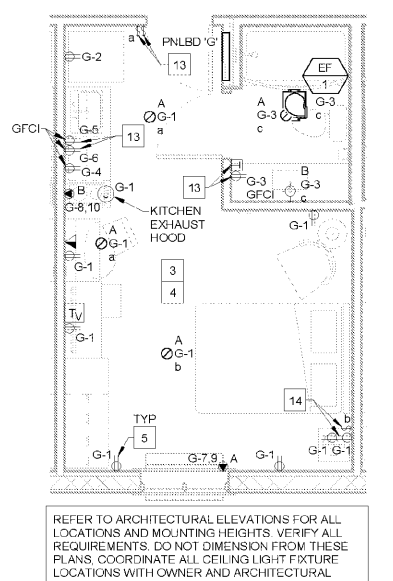
**9 ACC. DELUXE QUEEN SUITE**  
 SCALE: 1/4" = 1'-0"



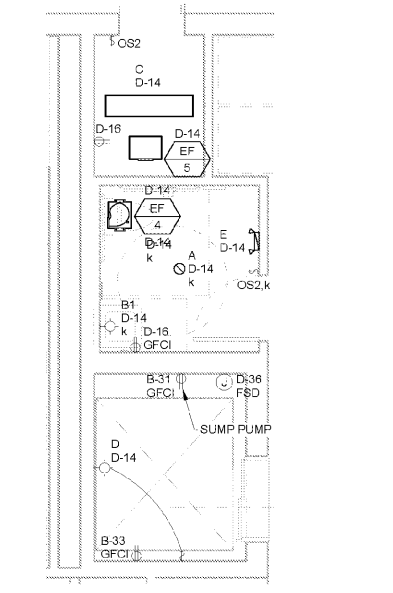
**10 DELUXE QUEEN SUITE**  
 SCALE: 1/4" = 1'-0"



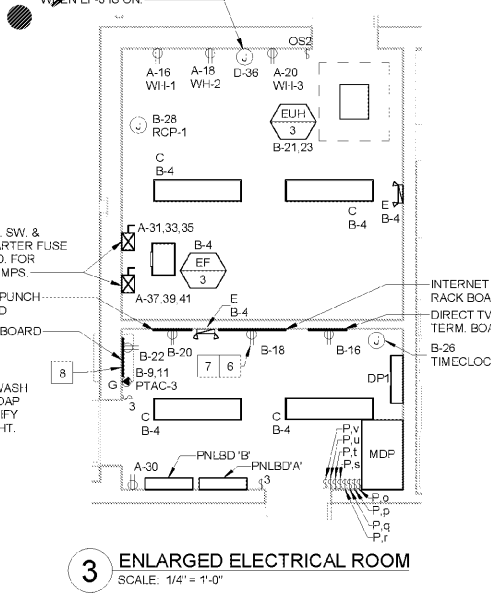
**11 QUEEN SUITE**  
 SCALE: 1/4" = 1'-0"



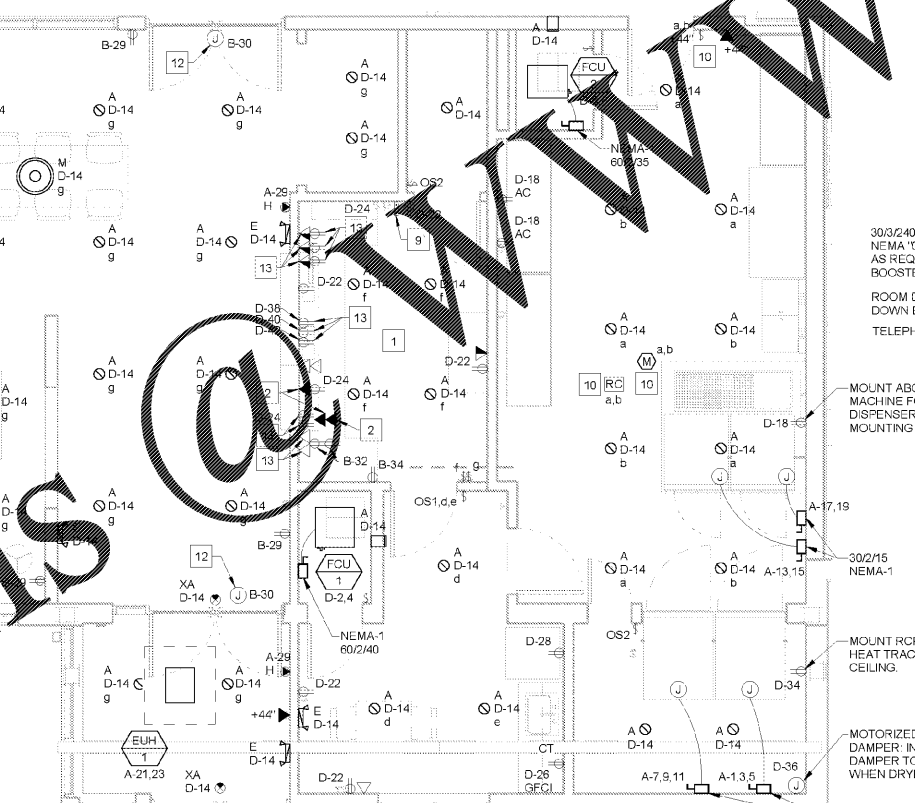
**12 ENLARGED LOBBY**  
 SCALE: 1/4" = 1'-0"



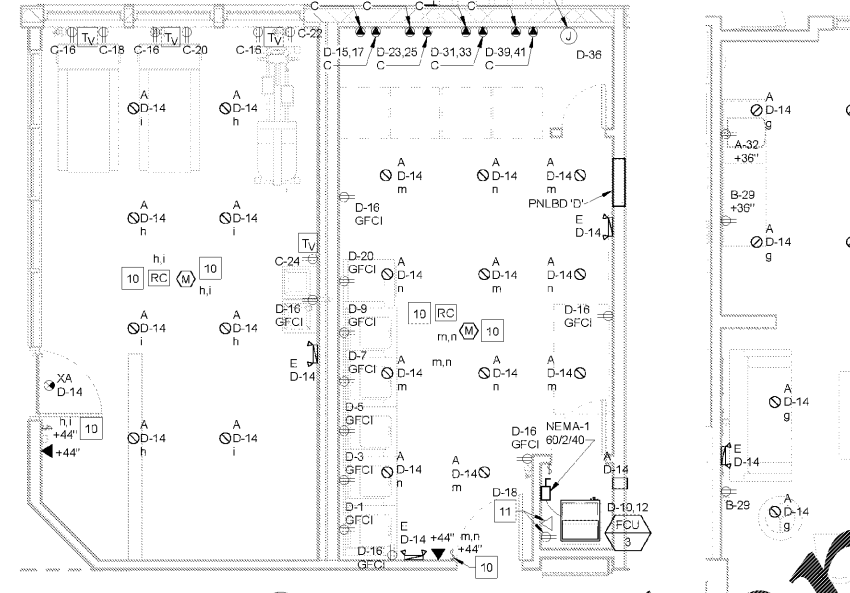
**2 ENLARGED SUPPORT AREA**  
 SCALE: 1/4" = 1'-0"



**3 ENLARGED ELECTRICAL ROOM**  
 SCALE: 1/4" = 1'-0"

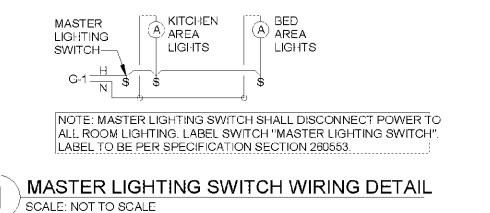


**4 ENLARGED LOBBY**  
 SCALE: 1/4" = 1'-0"



**5 ENLARGED LAUNDRY**  
 SCALE: 1/4" = 1'-0"

- ENLARGED PLAN KEYNOTES (1 X)**
- VERIFY EXACT LOCATION OF ALL REGISTRATION DEVICES PRIOR TO ROUGH-IN. REFER TO ARCHITECTURAL DRAWINGS FOR MORE INFORMATION.
  - ONE EMPTY JUNCTION BOX FOR HDMI JACK. COORDINATE WITH OWNER FOR CONDUIT ROUTING AND ALL REQUIREMENTS. VERIFY EXACT MOUNTING HEIGHT AND LOCATION ON ARCHITECTURAL DRAWINGS PRIOR TO ROUGH-IN. HDMI PORTS FROM MONITORS NEED TO CONNECT TO TOWERS HDMI PORTS.
  - SUITE ANNUNCIATOR REQUIRED IN HEARING IMPAIRED SUITES ONLY. PROVIDE WIRELESS SYSTEM FOR HEARING IMPAIRED SUITES (DOOR BELL SYSTEM) AVAILABLE AT THE FRONT DESK. OWNER TO PROVIDE QUALITY OF SYSTEMS SHOWN ON LIFE SAFETY DRAWINGS.
  - CONTRACTOR SHALL CONTACT LOCAL TELEPHONE PROVIDER TO OBTAIN REQUIREMENTS FOR HEARING IMPAIRED ROOMS. CONTRACTOR SHALL THEN INSTALL ALL REQUIRED EQUIPMENT.
  - ALL GUESTROOM 120V RECEPTACLES SHALL BE TAMPER RESISTANT SPECIFICATION GRADE RECEPTACLES AS REQUIRED BY N.E.C. REFER TO ARCHITECTURAL PLANS FOR MOUNTING HEIGHT.
  - PROVIDE 2-3" CONDUIT WITH PULL WIRE FOR DIRECT TV TELEPHONE ROUTE UNDERGROUND AND STUB OUT 6'-0" FROM BUILDING CAP AND MARK FOR OWNER.
  - PROVIDE 1-1/2" AND 1-2" CONDUIT FOR CAMERA AND CATV ROUTE FROM OPENING AND STUB INTO FIRST FLOOR CORRIDOR CEILING CAVITY.
  - PROVIDE 1-3" CONDUIT WITH PULL WIRE FOR FUTURE ROUTE UNDERGROUND AND STUB OUT 6'-0" FROM BUILDING CAP AND MARK FOR FUTURE USE.
  - PULL BUTTON FROM ENTRY DOORS.
  - PROVIDE WATTSTOPPER DUAL RELAY ROOM CONTROLLER LMRC-102, OCCUPANCY SENSOR LMDC-100 AND LOW VOLTAGE SWITCH (LMSV-102) FOR LIGHTING AS INDICATED BY LOWER CASE LETTERING. PROGRAM RELAY ONE IN ROOM CONTROLLER TO AUTO OFF LIGHTS ON ROOM OCCUPANCY AND RELAY TWO IN ROOM CONTROLLER FOR MANUAL ON BY LOW VOLTAGE SWITCH AND TO OFF ROOM OCCUPANCY PER ASHRAE 90.1 (2013) CODE REQUIREMENTS. INSTALL ALL EQUIPMENT PER MANUFACTURER REQUIREMENTS AND PROVIDE ALL LOW VOLTAGE WIRING FOR A COMPLETE AND OPERATIONAL SYSTEM.
  - PROVIDE (1) DATA POINT AND (1) GFCI RECEPTACLE. MOUNT ON WALL. REFER TO ARCHITECTURAL PLANS FOR MOUNTING HEIGHT.
  - PROVIDE DEVICES SHOWN ON PLAN FOR DOOR MAG LOCK SYSTEM. COORDINATE ALL REQUIREMENTS WITH MANUFACTURER AND PROVIDE ALL LOW VOLTAGE WIRING AND ACCESSORIES FOR A COMPLETE AND OPERATIONAL SYSTEM. REFER TO KEYNOTE 9 FOR OFFICE REQUIREMENTS.
  - DEVICES TO BE GANGED TOGETHER. MOUNT AT HEIGHT INDICATED ON ARCHITECTURAL PLANS.
  - LIGHT SWITCH AND ONE RECEPTACLE TO BE GANGED TOGETHER. MOUNT AT HEIGHT INDICATED ON ARCHITECTURAL PLANS.



**1 MASTER LIGHTING SWITCH WIRING DETAIL**  
 SCALE: NOT TO SCALE

11/2/2018 5:00:57 PM