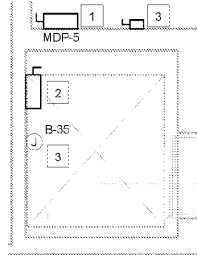


2 FOURTH FLOOR ELECTRICAL PLAN
SCALE: 1/8" = 1'-0"

NOTE: COORDINATE FINAL LOCATION AND QUANTITY OF J-BOXES FOR SIGNAGE WITH ARCHITECT AND SIGN VENDOR PRIOR TO ROUGH-IN. (TYP.)

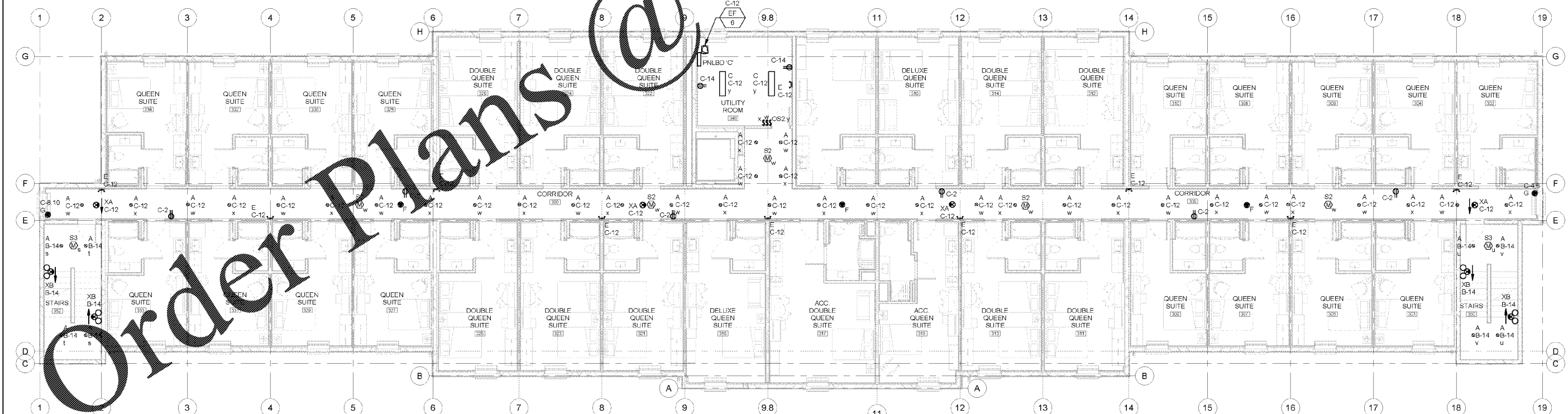
COORDINATE WITH CONSTRUCTION MANAGER FOR EXACT ELEVATOR INFORMATION. ELEVATOR SHOWN IN THESE DRAWINGS MAY DIFFER FROM ACTUAL ELEVATOR. COORDINATE BREAKER SIZE, FEEDER SIZE, LOCAL DISCONNECT, INSTALLATION REQUIREMENTS AND ANY ADDITIONAL REQUIREMENTS WITH ELEVATOR MANUFACTURER PRIOR TO WORK BEING STARTED.



ELEVATOR KEYNOTES (1, 2, X)

1. PROVIDE (1) 100A, 3P, 208V BUSSMAN POWER MODULE WITH SHUNT TRIP MECHANISM WITH 70A FUSES FOR ELEVATOR EQUIPMENT PER MANUFACTURER REQUIREMENTS. LOCATE DISCONNECT IN TOP FLOOR UTILITY ROOM AND WIRE ON PRIMARY SIDE OF ELEVATOR MANUFACTURERS FURNISHED 3 PHASE AUTO TRANSFORMER. COORDINATE ALL REQUIREMENTS WITH ELEVATOR MANUFACTURER. PROVIDE ALL WIRING AND ACCESSORIES FOR A COMPLETE AND OPERATIONAL SYSTEM.
2. PROVIDE (1) 60A, 3P, 480V FUSED DISCONNECT SWITCH WITH 35A FUSES PER MANUFACTURERS REQUIREMENTS. LOCATE DISCONNECT AT TOP OF HOISTWAY AND WIRE ON SECONDARY SIDE OF ELEVATOR MANUFACTURERS FURNISHED 3 PHASE AUTO TRANSFORMER. COORDINATE ALL REQUIREMENTS WITH ELEVATOR MANUFACTURER. PROVIDE ALL WIRING AND ACCESSORIES FOR A COMPLETE AND OPERATIONAL SYSTEM.
3. PROVIDE (1) 20A, 1P, 120V DISCONNECT FUSED AT 20A FOR ELEVATOR CAB POWER. MAKE FINAL 20 AMP 120 VOLT ELECTRICAL CONNECTION AT CONTROLLER LOCATION FOR ELEVATOR CAB POWER. VERIFY ALL REQUIREMENTS WITH ELEVATOR MANUFACTURER PRIOR TO ROUGH-IN.

3 ELEVATOR ELECTRICAL PLAN
SCALE: 1/4" = 1'-0"



1 THIRD FLOOR ELECTRICAL PLAN
SCALE: 1/8" = 1'-0"

WOOLPERT
307 Northridge Road
Suite 300
Atlanta, GA 30350
770.391.4095
FAX: 770.391.4104

ACERTUS CONSULTING GROUP, LLC
14817 West 95th Street • Lenexa, Kansas 66215
P 913 322 5150 • F 913 322 5155
www.AcertusGroup.com

WOODSPRING SUITES
WOODSPRING, FLORIDA
CYPRESS CREEK, FLORIDA
Pasco County
Cypress Creek, FL

Issues & Revisions:

Proj. No.: 078761
Date: 10/05/2018

Sheet Name:
ELECTRICAL PLANS -
THIRD AND FOURTH
FLOOR

E-4

11/2/2018 5:00:51 PM