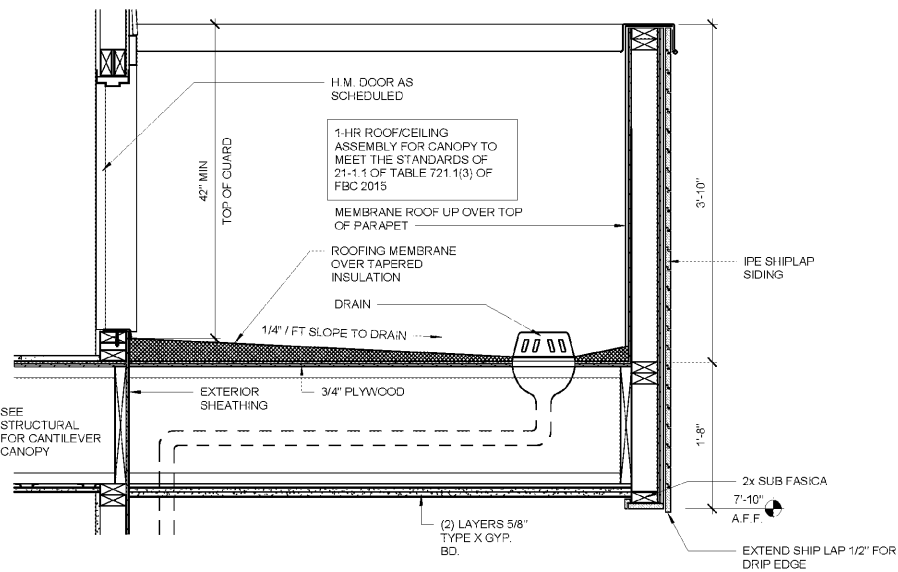
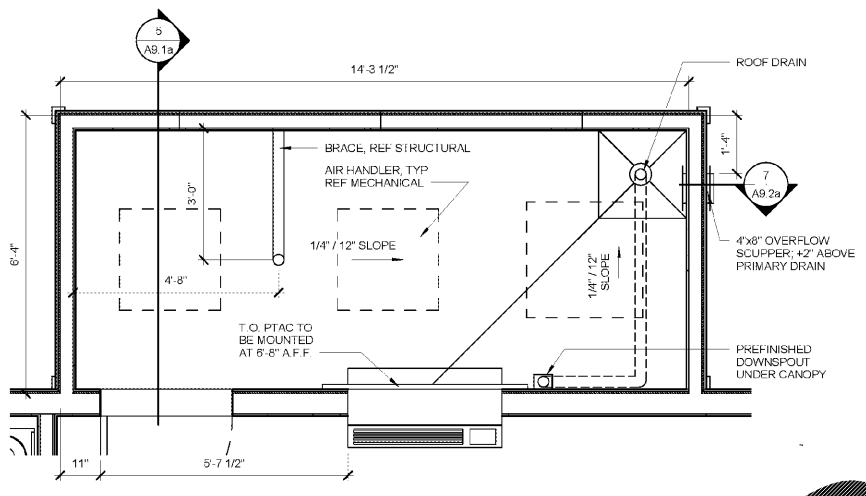


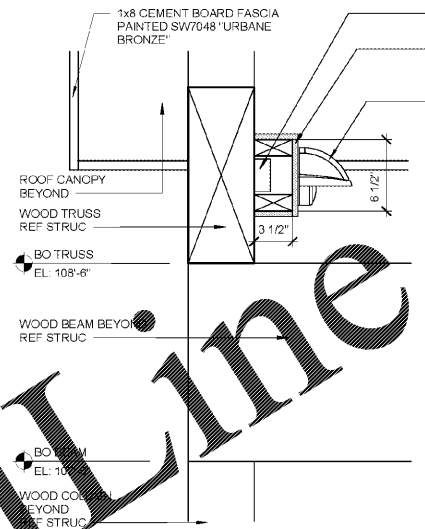
NOTE: PROVIDE CLOSEST MATCH TO SURROUNDING MATERIAL FROM MANUFACTURERS STANDARD COLORS. TO BE SUBMITTED AND APPROVED BY OWNER AND ARCHITECT.



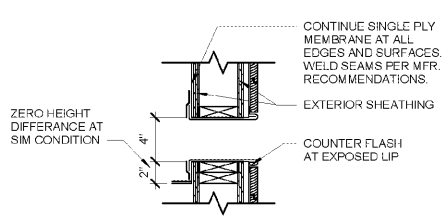
11 CANOPY SECTION
1" = 1'-0"



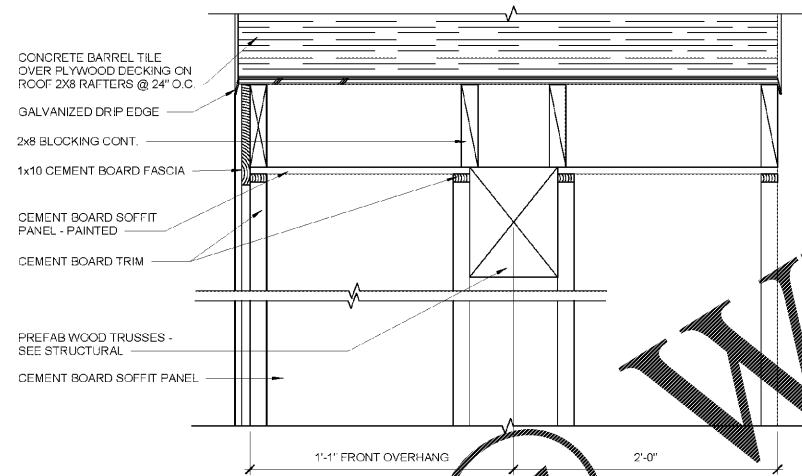
8 ENLARGED CANOPY PLAN
1/2" = 1'-0"



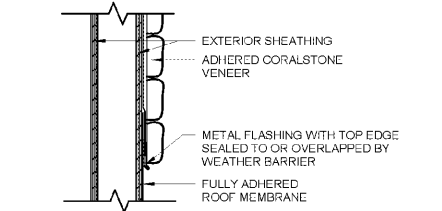
6 ENTRY SECTION
1 1/2" = 1'-0"



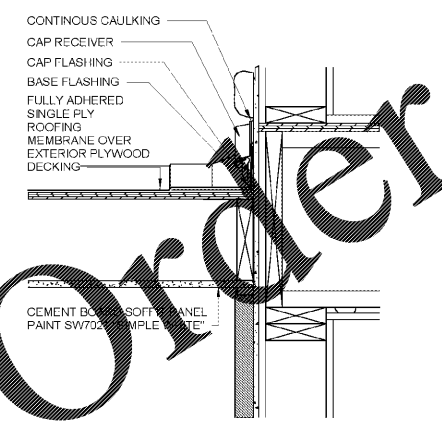
10 SCUPPER DETAIL
1 1/2" = 1'-0"



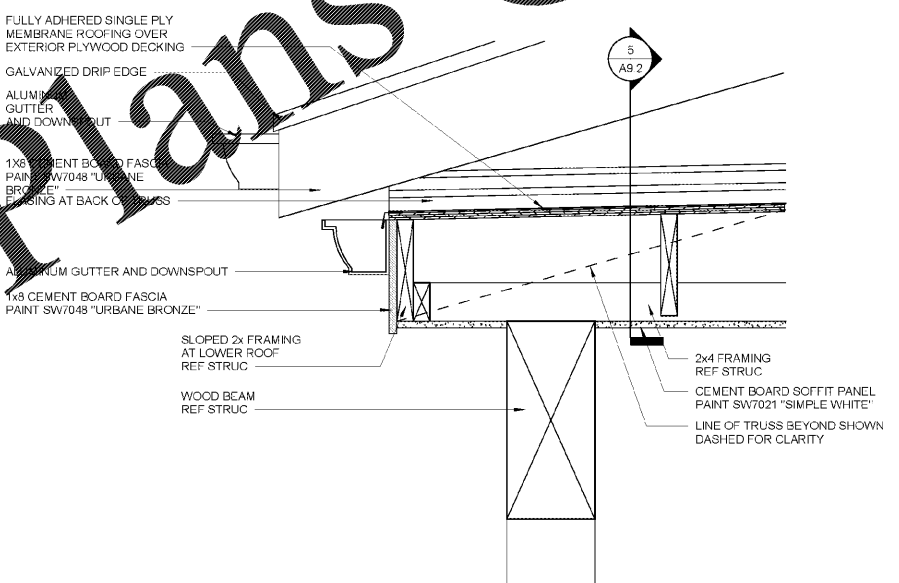
7 ENTRY SECTION
1 1/2" = 1'-0"



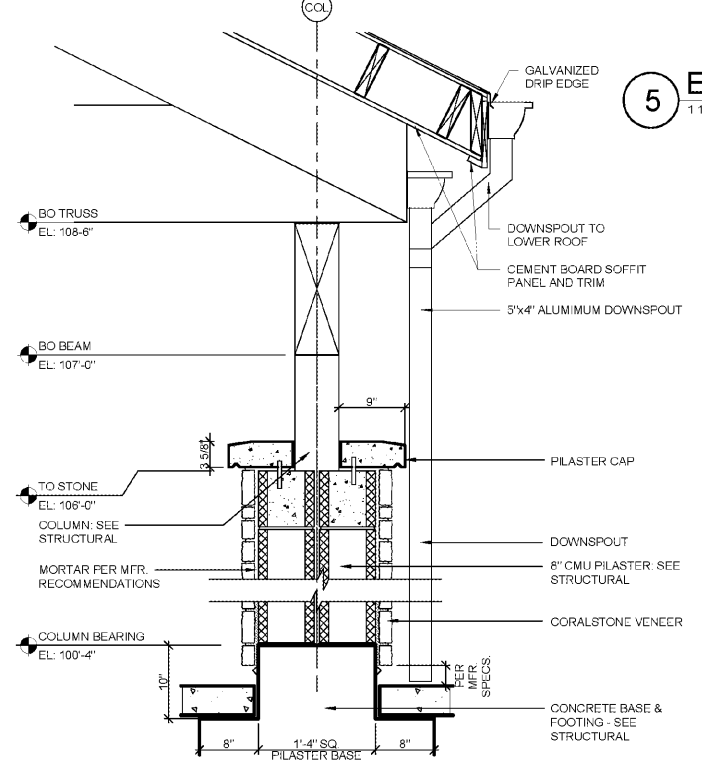
9 FLASHING DETAIL
1 1/2" = 1'-0"



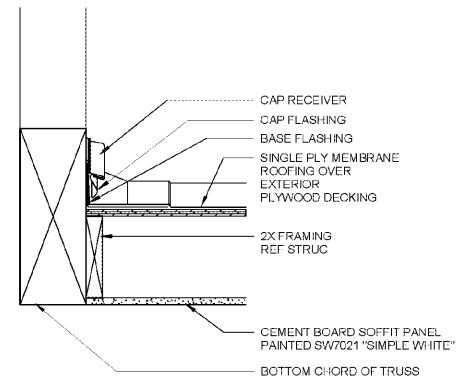
4 ENTRY SECTION
1 1/2" = 1'-0"



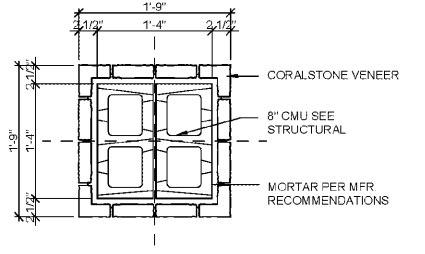
3 ENTRY SECTION
1 1/2" = 1'-0"



2 ENTRY COLUMN SECTION
1" = 1'-0"



5 ENTRY SECTION
1 1/2" = 1'-0"



1 ENTRY COLUMN DETAIL
1" = 1'-0"

WOODSPRING SUITES
CYPRESS CREEK, FLORIDA
Pasco County
Cypress Creek, FL

Proj. No.: 078761
Date: 11/02/2018

Sheet Name:
CANOPY DETAILS

A9.2

100% OWNER REVIEW | 11.02.18

11/2/2018 2:09:25 PM

Order Plans @

WWW.LDLINE.COM