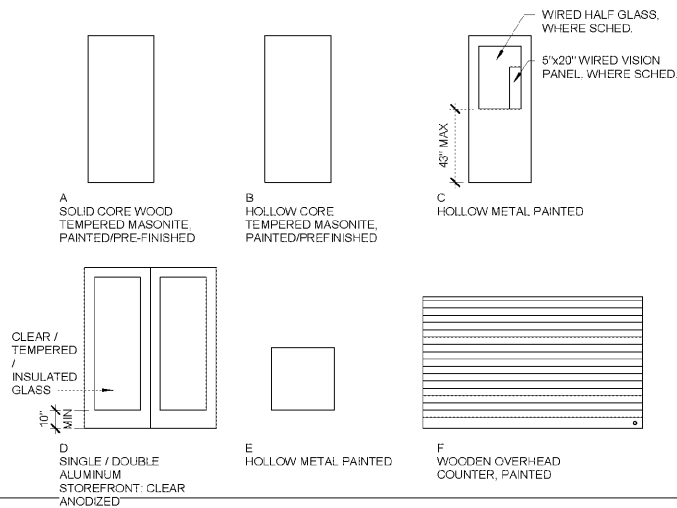
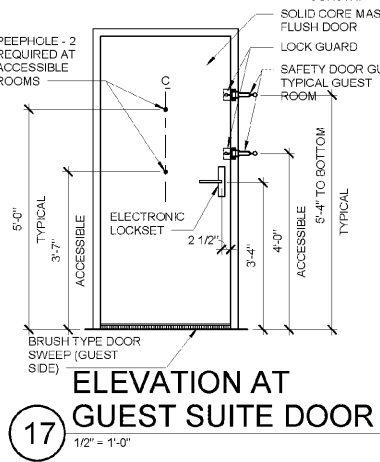
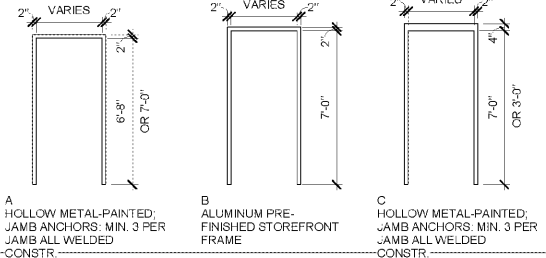


DOOR TYPES



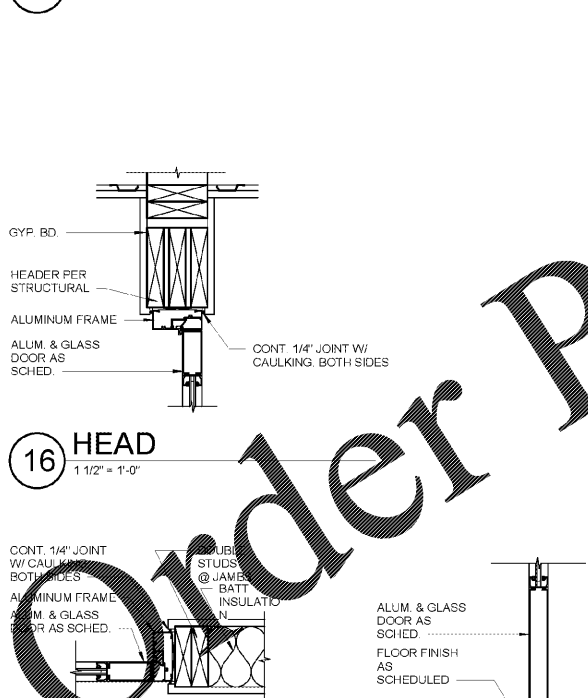
FRAME TYPES



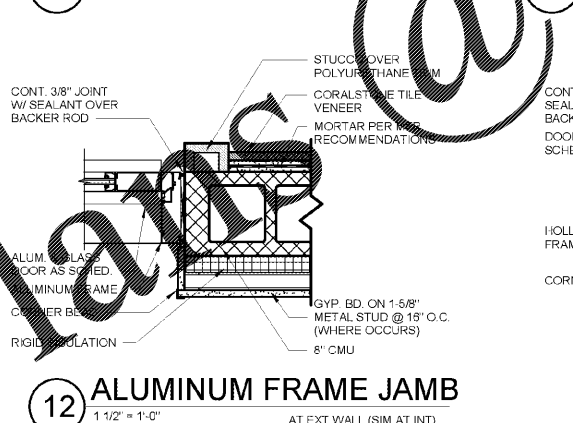
DOOR SCHEDULE

MARK	ROOM NAME	DOOR				FRAME			HARDWARE SET	REMARKS						
		W	H	T	MATERIAL	FINISH	TYPE	GLAZING			LABEL	TYPE	MATERIAL	HEAD	JAMB	SILL
GUESTROOMS																
A	QUEEN SUITE	3'-0"	6'-8"	1 3/4"	SC WOOD	PRE-FIN	A	-	20 MIN	A	H.M. TIMELY	3/AS.1	2/AS.2	1/AS.1	013, 014	DOOR HARDWARE SET 014 AT ADA ROOMS
B	BATHROOM	3'-0"	6'-8"	1 3/8"	HC WOOD	PRE-FIN	B	-	-	A	H.M. TIMELY	3/AS.1	2/AS.1	1/AS.1	016	1/2" UNDERCUT, GALVANIZED FRAME
STAIRS																
150A	STAIRS	3'-0"	7'-0"	1 3/4"	HOLLOW METAL	PAINT	C	5'x20" VP	-	C	HOLLOW METAL	7/AS.1	9/AS.1	4/AS.1	003	TEMPERED GLASS, PANIC HARDWARE
150B	STAIRS	3'-0"	7'-0"	1 3/4"	HOLLOW METAL	PAINT	C	5'x20" VP	90 MIN	C	HOLLOW METAL	10/AS.1	9/AS.1	8/AS.1	009	90 MIN FIRE GLASS, PANIC HARDWARE
152A	STAIRS	3'-0"	7'-0"	1 3/4"	HOLLOW METAL	PAINT	C	5'x20" VP	-	C	HOLLOW METAL	7/AS.1	9/AS.1	4/AS.1	003	TEMPERED GLASS, PANIC HARDWARE
152B	STAIRS	3'-0"	7'-0"	1 3/4"	HOLLOW METAL	PAINT	C	5'x20" VP	90 MIN	C	HOLLOW METAL	10/AS.1	9/AS.1	8/AS.1	009	90 MIN FIRE GLASS, PANIC HARDWARE
250	STAIRS	3'-0"	7'-0"	1 3/4"	HOLLOW METAL	PAINT	C	5'x20" VP	90 MIN	C	HOLLOW METAL	10/AS.1	9/AS.1	8/AS.1	009	90 MIN FIRE GLASS, PANIC HARDWARE
252	STAIRS	3'-0"	7'-0"	1 3/4"	HOLLOW METAL	PAINT	C	5'x20" VP	90 MIN	C	HOLLOW METAL	10/AS.1	9/AS.1	8/AS.1	009	90 MIN FIRE GLASS, PANIC HARDWARE
350	STAIRS	3'-0"	7'-0"	1 3/4"	HOLLOW METAL	PAINT	C	5'x20" VP	90 MIN	C	HOLLOW METAL	10/AS.1	9/AS.1	8/AS.1	009	90 MIN FIRE GLASS, PANIC HARDWARE
352	STAIRS	3'-0"	7'-0"	1 3/4"	HOLLOW METAL	PAINT	C	5'x20" VP	90 MIN	C	HOLLOW METAL	10/AS.1	9/AS.1	8/AS.1	009	90 MIN FIRE GLASS, PANIC HARDWARE
450	STAIRS	3'-0"	7'-0"	1 3/4"	HOLLOW METAL	PAINT	C	5'x20" VP	90 MIN	C	HOLLOW METAL	10/AS.1	9/AS.1	8/AS.1	009	90 MIN FIRE GLASS, PANIC HARDWARE
452	STAIRS	3'-0"	7'-0"	1 3/4"	HOLLOW METAL	PAINT	C	5'x20" VP	90 MIN	C	HOLLOW METAL	10/AS.1	9/AS.1	8/AS.1	009	90 MIN FIRE GLASS, PANIC HARDWARE
FIRST FLOOR																
100	CORRIDOR	3'-0"	6'-8"	1 3/4"	HOLLOW METAL	PAINT	C	-	20 MIN	A	HOLLOW METAL	10/AS.1	9/AS.1	8/AS.1	019	ONE LEAF 2'-6" ONE LEAF 3'-0"
136A	VESTIBULE	6'-0"	7'-0"	1 3/4"	ALUMINUM	PRE-FIN	D	FULL GLASS	-	B	ALUMINUM	13/AS.1	12/AS.1	11/AS.1	001	PAIR 3'-0" DOORS, CLEAR TEMPERED GLASS
136B	VESTIBULE	6'-0"	7'-0"	1 3/4"	ALUMINUM	PRE-FIN	D	FULL GLASS	-	B	ALUMINUM	20/AS.1	19/AS.1	18/AS.1	005	PAIR 3'-0" DOORS, CLEAR TEMPERED GLASS
136	HALL / VENDING	3'-6"	7'-0"	1 3/4"	ALUMINUM	PRE-FIN	D	FULL GLASS	-	B	ALUMINUM	13/AS.1	12/AS.1	11/AS.1	004	PAIR TEMPERED GLASS
137B	AHU	2'-6"	6'-8"	1 3/4"	HOLLOW METAL	PAINT	C	-	-	A	H.M. TIMELY	3/AS.1	2/AS.1	1/AS.1	015	-
139	RESTROOM	3'-0"	6'-8"	1 3/4"	SC WOOD	PRE-FIN	A	-	-	A	H.M. TIMELY	3/AS.1	2/AS.1	1/AS.1	001	DOOR HARDWARE SET 014 AT ADA ROOMS
140	MECHANICAL ROOM	3'-0"	7'-0"	1 3/4"	HOLLOW METAL	PAINT	C	-	ze	C	HOLLOW METAL	7/AS.1	9/AS.1	4/AS.1	002	-
142A	GUEST LAUNDRY	3'-0"	6'-8"	1 3/4"	HOLLOW METAL	PAINT	C	HALF GLASS	45 MIN	A	HOLLOW METAL	10/AS.1	9/AS.1	8/AS.1	012	45 MIN. FIRE GLASS
142B	AHU	2'-6"	6'-8"	1 3/4"	HOLLOW METAL	PAINT	C	-	-	A	H.M. TIMELY	3/AS.1	2/AS.1	1/AS.1	015	-
142C	GUEST LAUNDRY	2'-0"	6'-8"	1 3/4"	HOLLOW METAL	PAINT	C	-	-	A	H.M. TIMELY	3/AS.1	2/AS.1	1/AS.1	015	-
143A	STAFF LAUNDRY	3'-0"	6'-8"	1 3/4"	HOLLOW METAL	PAINT	C	HALF GLASS	45 MIN	A	H.M. TIMELY	3/AS.1	2/AS.1	1/AS.1	015	45 MIN. FIRE GLASS
143B	AHU	2'-6"	6'-8"	1 3/4"	HOLLOW METAL	PAINT	C	-	-	A	H.M. TIMELY	3/AS.1	2/AS.1	1/AS.1	015	DOOR TO OPEN FULL 180 DEGREES
143C	TRAINING	3'-0"	6'-8"	1 3/4"	SC WOOD	PRE-FIN	A	-	45 MIN	A	H.M. TIMELY	3/AS.1	2/AS.1	1/AS.1	010	-
143D	DRYER	2'-0"	6'-8"	1 3/4"	HOLLOW METAL	PAINT	C	-	-	A	H.M. TIMELY	3/AS.1	2/AS.1	1/AS.1	015	-
144	STORAGE	3'-0"	7'-0"	1 3/4"	HOLLOW METAL	PAINT	C	-	-	C	HOLLOW METAL	7/AS.1	9/AS.1	4/AS.1	002	-
145A	ELECTRICAL ROOM	3'-0"	7'-0"	1 3/4"	HOLLOW METAL	PAINT	C	-	-	C	HOLLOW METAL	7/AS.1	9/AS.1	4/AS.1	002	-
145B	ELECTRICAL ROOM	3'-0"	8'-8"	1 3/4"	HOLLOW METAL	PAINT	A	-	-	A	HOLLOW METAL	3/AS.1	2/AS.1	1/AS.1	008	-
145	LOBBY	6'-0"	7'-0"	1 3/4"	ALUMINUM	PRE-FIN	D	FULL GLASS	-	B	ALUMINUM	20/AS.1	19/AS.1	18/AS.1	005	PAIR 3'-0" DOORS, CLEAR TEMPERED GLASS
147	FITNESS	3'-0"	7'-0"	1 3/4"	ALUMINUM	PRE-FIN	D	FULL GLASS	-	B	ALUMINUM	20/AS.1	19/AS.1	18/AS.1	017	-
148A	REGISTRATION	3'-0"	6'-8"	1 3/4"	HOLLOW METAL	PAINT	C	-	-	A	H.M. TIMELY	3/AS.1	2/AS.1	1/AS.1	010	RETURN AIR LOUVER
148B	REGISTRATION	8'-0"	3'-8"	1 3/4"	WOOD COIL	PRE-FIN	F	-	-	A	WOOD	11/AS.4	10/AS.4	-	-	ALL HARDWARE BY OVER-HEAD DOOR MFR, NOTE 2
154	STORAGE	3'-0"	6'-8"	1 3/4"	HOLLOW METAL	PAINT	C	-	-	C	HOLLOW METAL	7/AS.1	9/AS.1	4/AS.1	015	NO LOCK
SECOND FLOOR																
240A	CORRIDOR	3'-0"	6'-8"	1 3/4"	HOLLOW METAL	PAINT	C	-	45 MIN	A	H.M. TIMELY	3/AS.1	2/AS.1	1/AS.1	008	-
240B	UTILITY ROOM	3'-0"	3'-0"	1 3/4"	HOLLOW METAL	PAINT	E	-	-	C	HOLLOW METAL	7/AS.1	9/AS.1	5/AS.1	008	-
THIRD FLOOR																
340	CORRIDOR	3'-0"	6'-8"	1 3/4"	HOLLOW METAL	PAINT	C	-	45 MIN	A	H.M. TIMELY	3/AS.1	2/AS.1	1/AS.1	008	-
FOURTH FLOOR																
440	CORRIDOR	3'-0"	6'-8"	1 3/4"	HOLLOW METAL	PAINT	C	-	45 MIN	A	H.M. TIMELY	3/AS.1	2/AS.1	1/AS.1	008	-

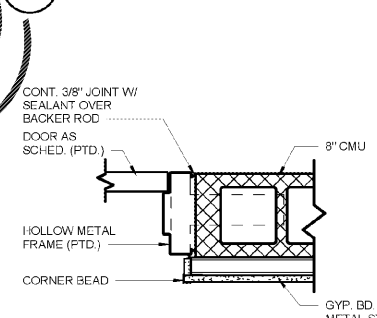
18 PHOTOLUMINESCENT DOOR SIGN
3/4" = 1'-0"



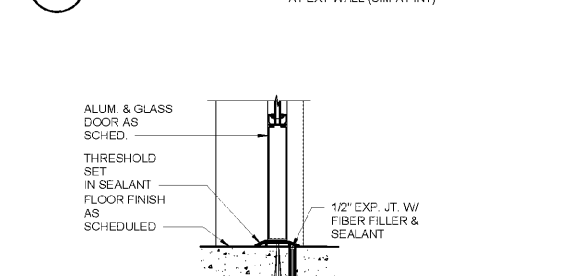
13 ALUMINUM FRAME HEAD
1 1/2" = 1'-0"
AT EXT WALL (SIM AT INT)



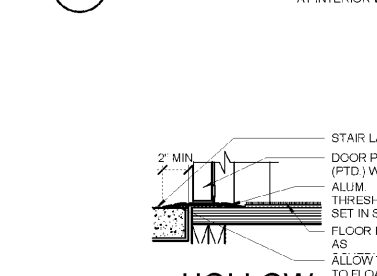
10 HOLLOW METAL FRAME HEAD
1 1/2" = 1'-0"
AT INTERIOR WALL



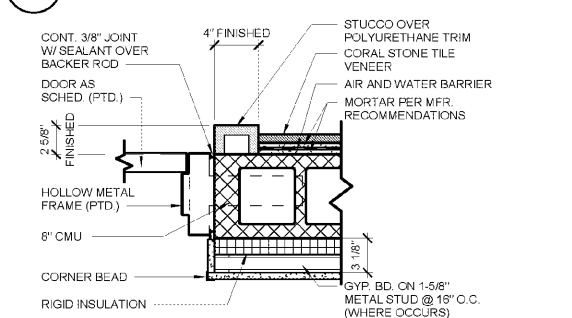
12 ALUMINUM FRAME JAMB
1 1/2" = 1'-0"
AT EXT WALL (SIM AT INT)



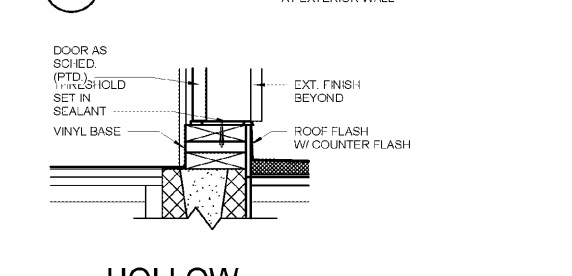
9 HOLLOW METAL FRAME JAMB
1 1/2" = 1'-0"
AT INTERIOR WALL



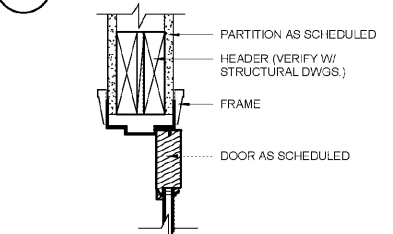
7 HOLLOW METAL FRAME HEAD
1 1/2" = 1'-0"
AT EXTERIOR WALL



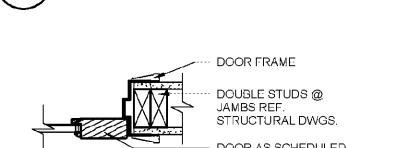
6 HOLLOW METAL FRAME JAMB
1 1/2" = 1'-0"
AT EXTERIOR WALL



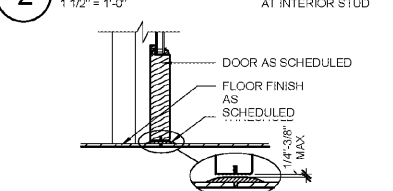
4 HOLLOW METAL FRAME SILL
1 1/2" = 1'-0"
AT EXTERIOR WALL



3 FRAME HEAD
1 1/2" = 1'-0"
AT INTERIOR WALL



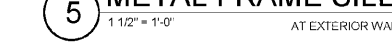
2 FRAME JAMB
1 1/2" = 1'-0"
AT INTERIOR STUD



8 HOLLOW METAL FRAME SILL
1 1/2" = 1'-0"
AT INTERIOR WALL



5 HOLLOW METAL FRAME SILL
1 1/2" = 1'-0"
AT EXTERIOR WALL



1 FRAME SILL
1 1/2" = 1'-0"
AT INTERIOR STUD



WOODSPRING SUITES
CYPRESS CREEK, FLORIDA
Pasco County
Cypress Creek, FL

Proj. No.: 078761
Date: 11/02/2018

Sheet Name:
DOOR SCHEDULE &
DOOR DETAILS

A8.1

100% OWNER REVIEW | 11.02.18

11/2/2018 2:09:11 PM

W
WOOLPERT
15 Northridge Road
Suite 300
Atlanta, GA 30350
770.391.4095
FAX: 770.391.4104