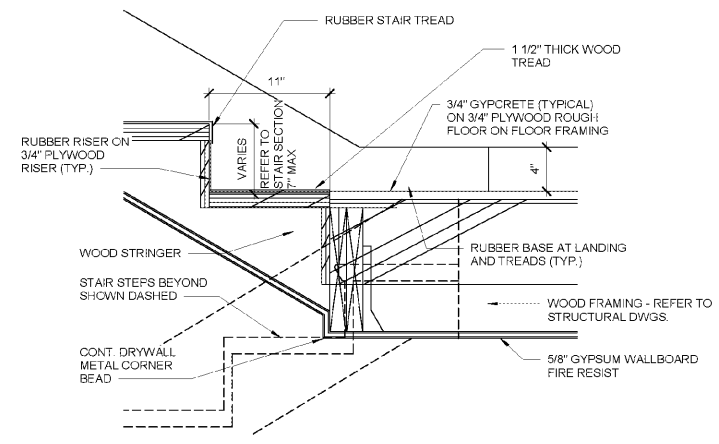
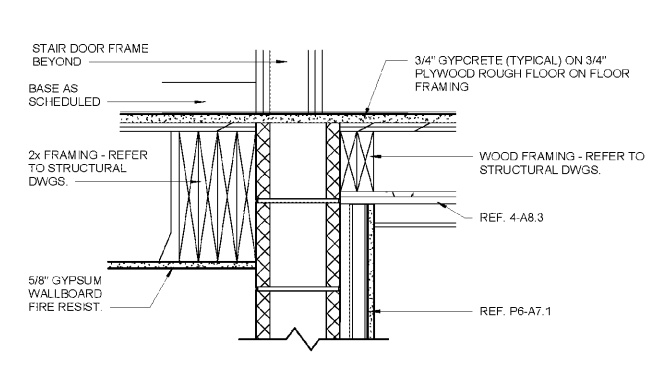


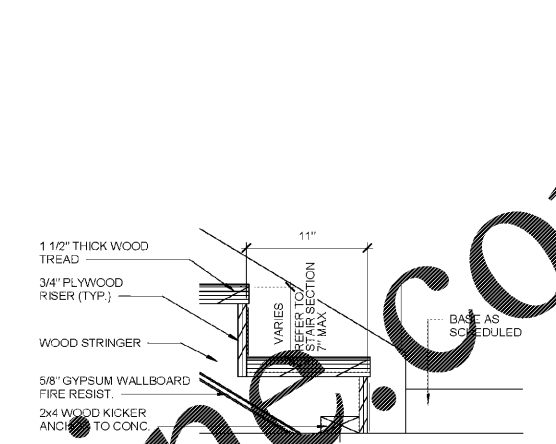
1 STAIR TO LANDING DETAIL
 1 1/2" = 1'-0"



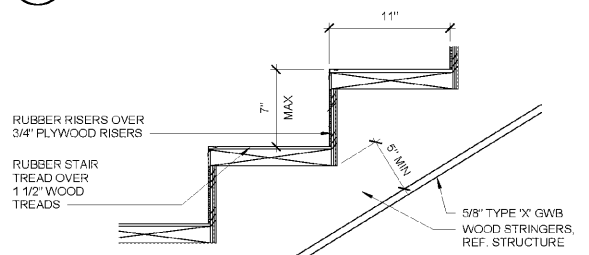
2 STAIR TO LANDING DETAIL
 1 1/2" = 1'-0"



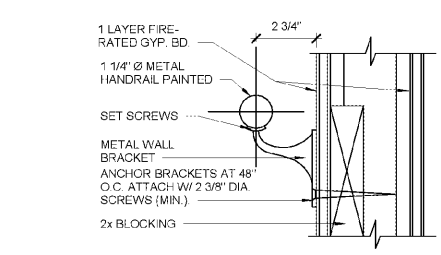
3 STAIR TO CORRIDOR WALL DETAIL
 1 1/2" = 1'-0"



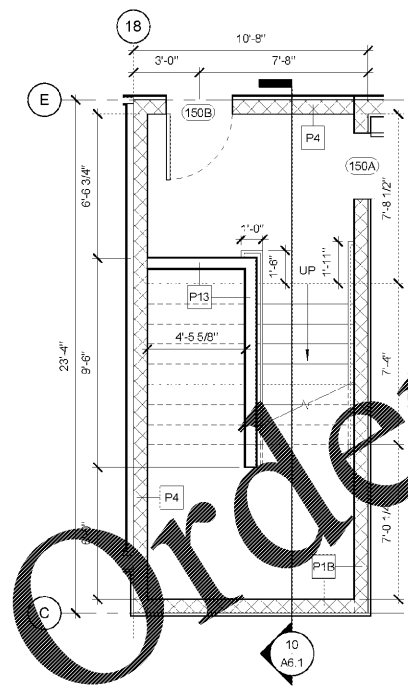
4 STAIR TO CONC. SLAB DETAIL
 1 1/2" = 1'-0"



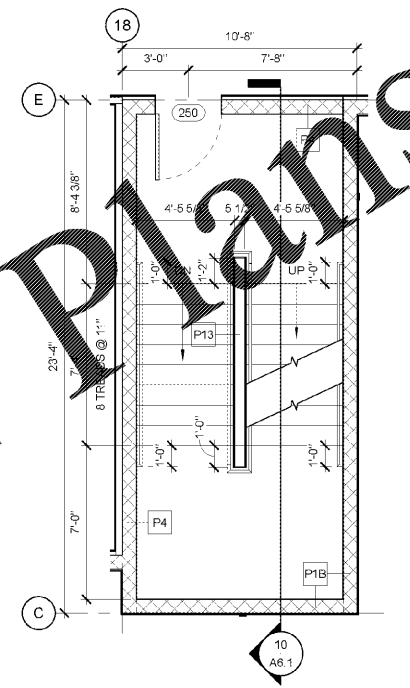
5 TREAD/RISER DETAIL
 1 1/2" = 1'-0"



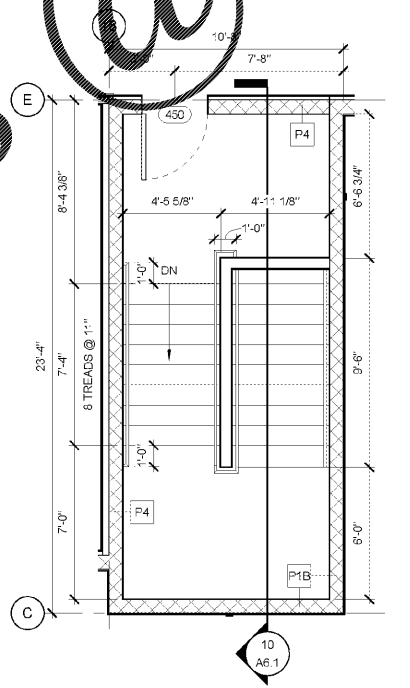
6 TYP. WALL BRACKET
 3" = 1'-0"



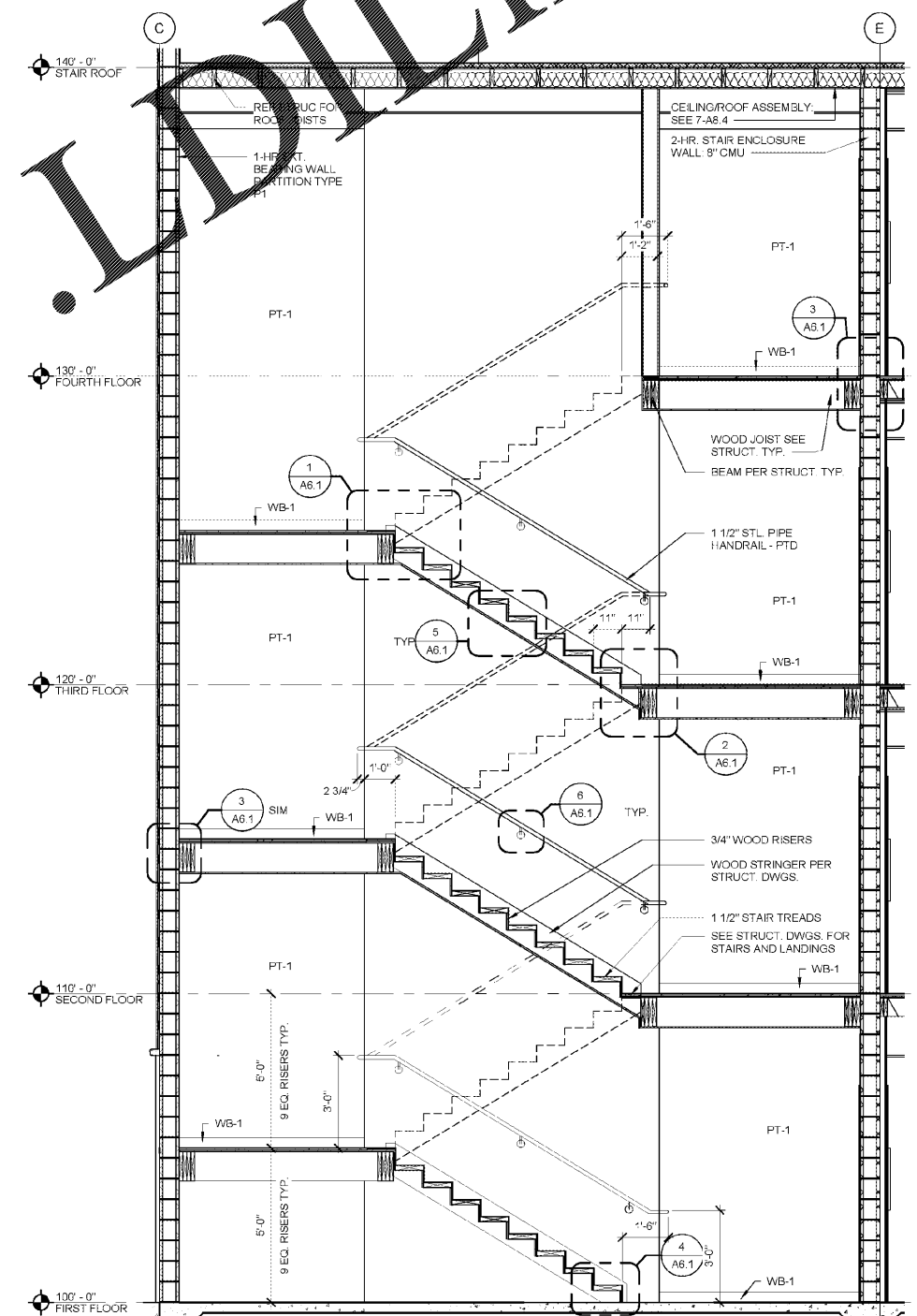
7 STAIR - 1ST FLOOR
 1/4" = 1'-0"



8 STAIR - 2ND & 3RD FLOOR
 1/4" = 1'-0"



9 STAIR - 4TH FLOOR
 1/4" = 1'-0"



10 STAIR TOWER TYPICAL SECTION
 3/8" = 1'-0"

11/2/2018 2:08:58 PM

Order Plans

WWW.ONLINE.COM

WOODSPRING SUITES
 CYPRESS CREEK, FLORIDA
 Pasco County
 Cypress Creek, FL

Issues & Revisions:

Proj. No.: 078761
 Date: 11/02/2018

Sheet Name:
 STAIR PLANS,
 SECTIONS & DETAILS

A6.1