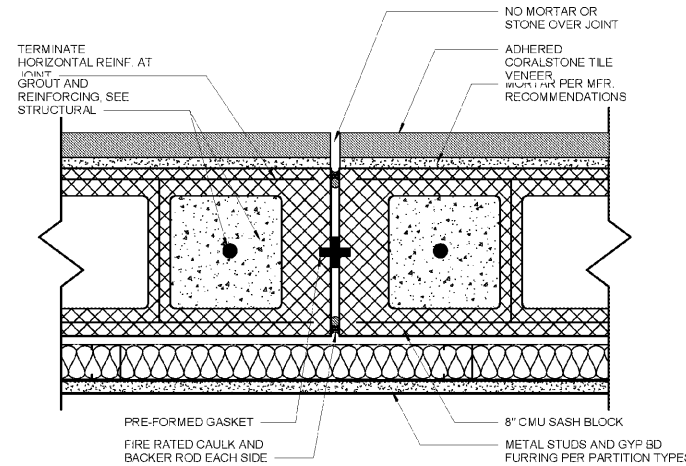


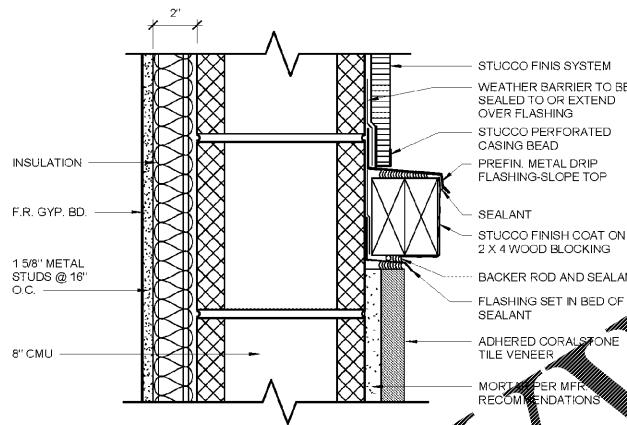
**TYPICAL MASONRY CONTROL JOINT AT STUCCO**

7  
3" = 1'-0"



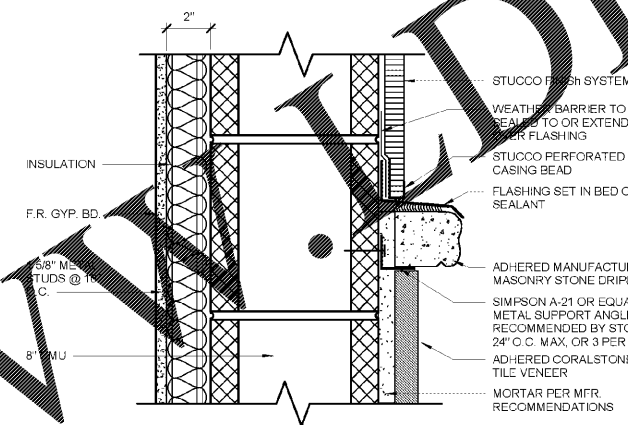
**TYPICAL MASONRY CONTROL JOINT AT STONE**

6  
3" = 1'-0"



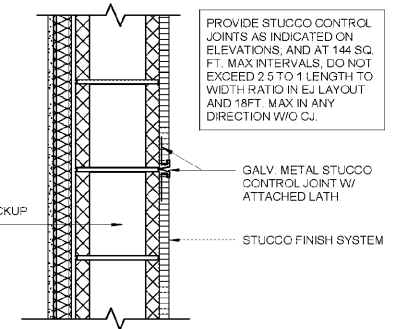
**5 TRIM DETAIL FLASHING**

3" = 1'-0"



**4 DRIPLEGE FLASHING**

3" = 1'-0"



**3 STUCCO CONTROL JOINT DETAIL**

1 1/2" = 1'-0"

- NOTES:**
1. GC TO COORDINATE ELECTRICAL ROUGH IN WITH CONTACTOR AND SIGN VENDOR PRIOR TO DRYWALL.
  2. REFER TO SIGN PACKAGE FOR ALL BLOCKING AND MOUNTING DETAILS.
  3. ALIGN EXHAUST VENTS BOTH VERTICAL AND HORIZONTAL.
  4. EXTERIOR SIGNAGE: OWNER TO COORDINATE WITH SIGN VENDOR AND LOCAL JURISDICTION.
  5. GLITTERS, DOWNSPOUTS, PARAPET CAP, AND FLASHING TO BE SELECTED FROM MANUFACTURER'S STANDARD COLORS TO MATCH AS SCHEDULED. SUBMIT FOR APPROVAL.

**GENERAL NOTE:**  
PROVIDE WEATHER BARRIER OVER ALL EXTERIOR SHEATHING OR CMU PRIOR TO THE INSTALLATION OF ANY EXTERIOR FINISH MATERIAL. INSTALL PER MANUFACTURER'S SPECIFICATIONS AND PROVIDE ALL MANUFACTURER'S ACCESSORIES TO FULLY FLASH AND COUNTER-FLASH AT ALL WINDOWS, DOORS, AND EXTERIOR PENETRATIONS. PROVIDE A WEATHER TIGHT BARRIER AT ALL SURFACES. COORDINATE FLASHING WITH WINDOW, DOOR, VENT, ETC. MANUFACTURER'S FOR A WEATHER TIGHT SEAL AT ALL OPENINGS.

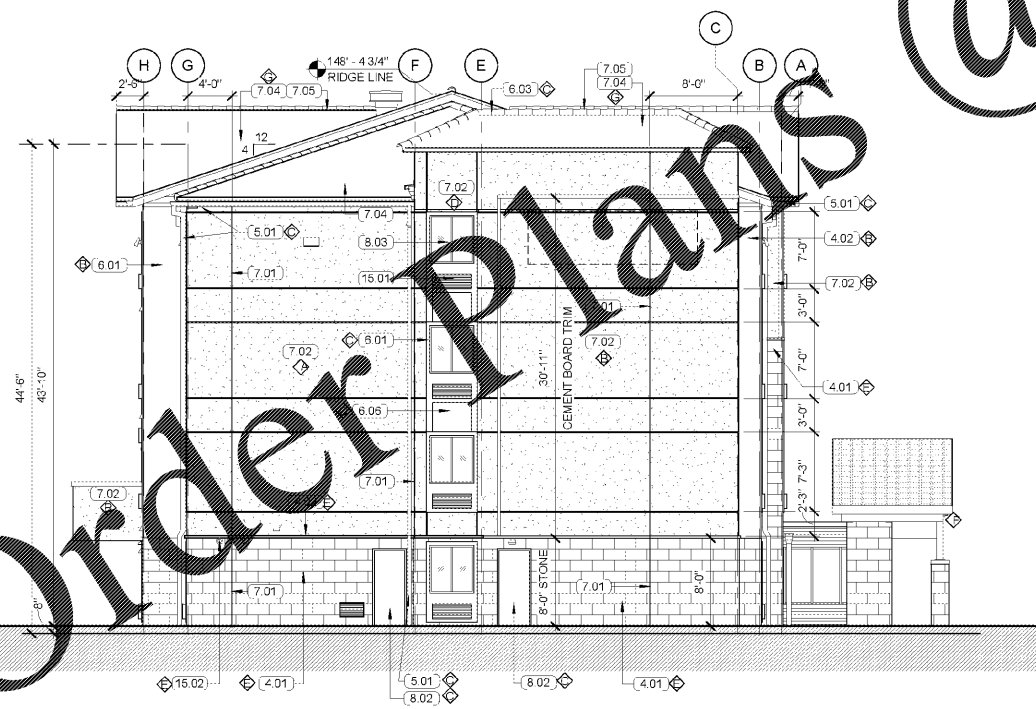
**COLOR SCHEDULE:**

A	COLOR: SHERWIN WILLIAMS SW6471 "HAZEL"
B	COLOR: SHERWIN WILLIAMS SW7551 "GREEK VILLA"
C	COLOR: SHERWIN WILLIAMS SW7567 "NATURAL TAN"
D	COLOR: SHERWIN WILLIAMS SW7057 "SILVER STRAND"
E	MFR: BORAL - STONE TILE VENEER STYLE: CORALSTONE
F	STAIN: SW3512 "CIDER MILL"
G	CONCRETE BARREL ROOF TILE CROWN SANISEL COLOR: SAND DOLLAR

**KEYNOTE LEGEND**

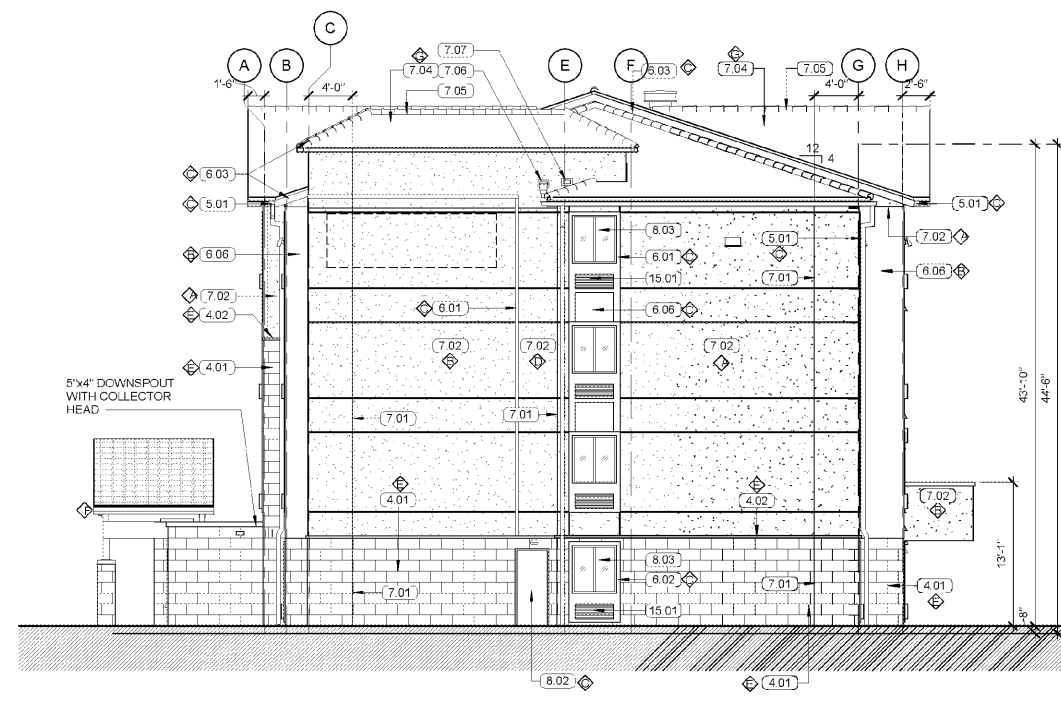
4.01	ADHERED MANUFACTURED STONE VENEER; REF. INSTALLATION DETAIL 8-A8.5
4.02	ADHERED MANUFACTURED STONE VENEER DRIPLEGE
5.01	5"x4" ALUMINUM GUTTERS AND DOWNSPOUTS
6.01	STUCCO TRIM 2'-1/2" X 4"
6.02	STUCCO TRIM AT STONE 2'-1/2" X 4"
6.03	TRIM FASCIA
6.06	CEMENT BOARD PANEL / EIFS
6.06	MASONRY CONTROL JOINT, REF. DETAILS 6/A2.2 & 7/A2.2 AND STRUCTURAL FOR LOCATIONS
7.02	STUCCO FINISH; SEE COLOR SCHEDULE
7.04	CONCRETE ROOFING TILES
7.05	RIDGE VENT, REF. SHEET A1.3 FOR DETAILS
7.06	SCUPPER
7.07	OVERFLOW SCUPPER
8.02	HOLLOW METAL DOOR
8.03	SLIDING WINDOW, TYP. SEE SPECS
15.01	THRU-WALL HVAC UNIT
15.02	MECHANICAL LOUVERS; REF. MECH. DWGS, MILL ALUMINUM FINISH

**WOOLPERT**  
475 Northridge Road  
Suite 300  
Atlanta, GA 30350  
770.391.4095  
FAX: 770.391.4104



**2 WEST ELEVATION**

1/8" = 1'-0"



**1 EAST ELEVATION**

1/8" = 1'-0"

**WOODSPRING SUITES**  
CYPRESS CREEK, FLORIDA  
Pasco County  
Cypress Creek, FL

Issues & Revisions:

Proj. No.: 078761  
Date: 11/02/2018

Sheet Name:  
EXTERIOR ELEVATIONS

**A2.2**

100% OWNER REVIEW | 11.02.18

11/2/2018 2:07:49 PM