

ROOF TRUSS CONNECTOR INFORMATION SCHEDULE

CONNECTOR NAME	FLORIDA NO.	ALLOWABLE CAPACITY			FASTENERS TO SUPPORT	FASTENERS TO TRUSS/OUTLOOKER
		UP	DOWN	IN/OUT LEFT/RIGHT		
SIMPSON HTSM16	FL11473.11	1.02K	-----	0.09K 0.235K	(4) 1/2" X 2 1/2" TITEN SCREWS	(8) 10d
SIMPSON MTS12	FL10456.33	0.86K	-----	0.125K 0.075K	(7) 10d OR (7) 10d X 1 1/2	(7) 10d OR (7) 10d X 1 1/2
SIMPSON H3Z	FL10456.13	0.32K	-----	0.14K 0.105K	(4) 8d	(4) 8d
SIMPSON H2.5T	FL11478.5	0.545K	-----	0.145K 0.135K	(5) 8d	(5) 8d
SIMPSON LU24	FL10655.103	0.23K	0.59K	-----	(4) 16d	(2) 10d X 1 1/2

WALL OPENING PRESSURE (p.s.f.)

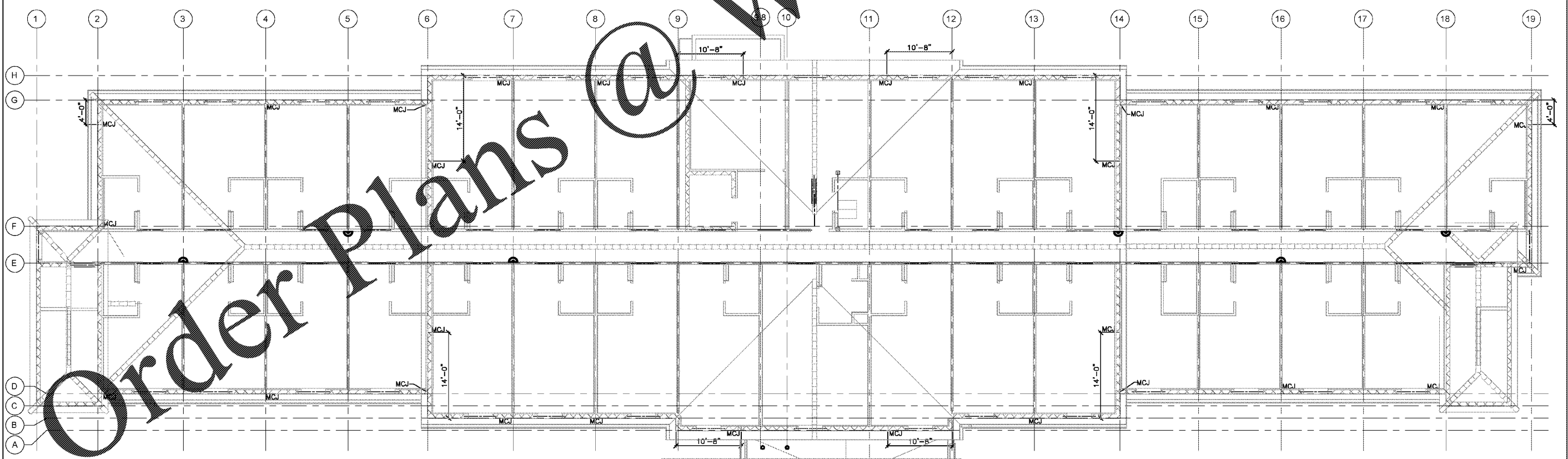
LOCATION	ULTIMATE PRESSURE (psf)
WITHIN 5'-10" OF BUILDING CORNER	+52.64 pcf -88.81 pcf
ALL OTHERS	+25.2 pcf -47.18 pcf

WIND LOAD INFORMATION
 1. ULTIMATE WIND SPEED: 140 MPH (3 SECONDS GUST)
 2. RISK CATEGORY II
 3. WIND EXPOSURE: C
 4. INTERNAL PRESSURE COEFFICIENT: 0.18 (DESIGNED AS ENCLOSED)
 5. P.S.F. WALL PRESSURES BASED UPON EFFECTIVE WIND AREA OF 20 SQ. FT.

ROOF WIND PRESSURE LOADING PLAN
 1/8" = 1'-0"

- PLAN NOTES:**
- (+) = PRESSURES ACTING TOWARD BUILDING SURFACES.
 - (-) = PRESSURES ACTING AWAY FROM BUILDING SURFACES.
 - ALL PRESSURES ARE ULTIMATE, UNFACTORED VALUES BASED UPON LRFD.
 - ROOF EFFECTIVE WIND AREA OF 50 SQ. FT. USED FOR ROOF PRESSURES.
 - WALL EFFECTIVE WIND AREA OF 20 SQ. FT. USED FOR WALL WIND PRESSURES.
 - ROOF SHEATHING TO BE ATTACHED WITH 10d @ 4" O.C. AT ALL PANEL EDGES & INTERMEDIATE SUPPORTS AT ALL SHADED AREAS (ZONE #3 OF 30.5-1 OF ASCE7) PER F.B.C. 2304.9.1

- NOTE:**
- 10d = 0.148" x 3" LONG
 - 10d x 1 1/2 = 0.148" x 1 1/2" LONG
 - 8d = 0.131" x 2 1/2" LONG
 - 16d = 0.162" x 3 1/2" LONG



MASONRY CONTROL JT. PLAN
 1/8" = 1'-0"

WOODSPRING SUITES
 CYPRESS CREEK, FLORIDA
 Pasco County
 Cypress Creek, FL

Issues & Revisions:

Proj. No.: 078761
 Date: 10/02/2018

Sheet Name:
 ROOF WIND PRESSURE LOADING PLAN & MASONRY CTRL. JT. PLAN

S1.4

Order Plans @