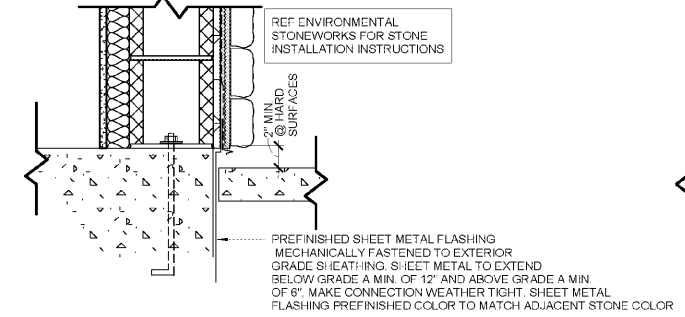
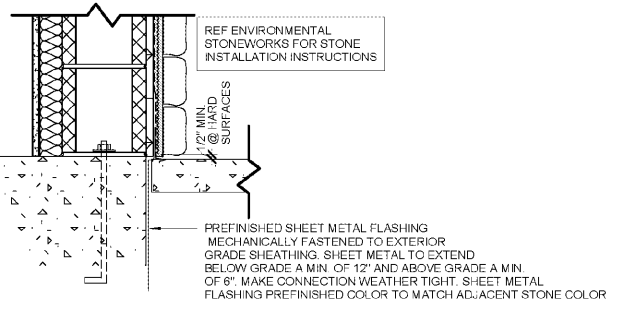


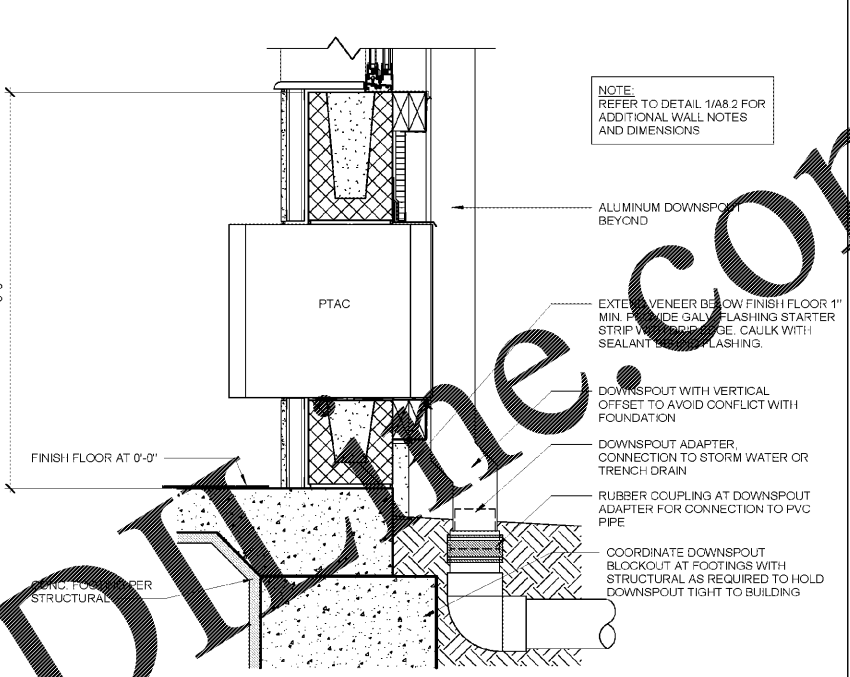
12 STONE AT GRADE
 1/2" = 1'-0"



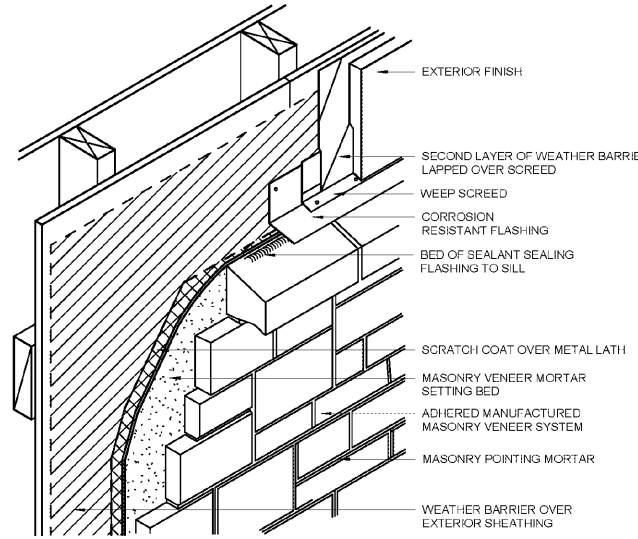
11 STONE AT SIDEWALK
 1/2" = 1'-0"



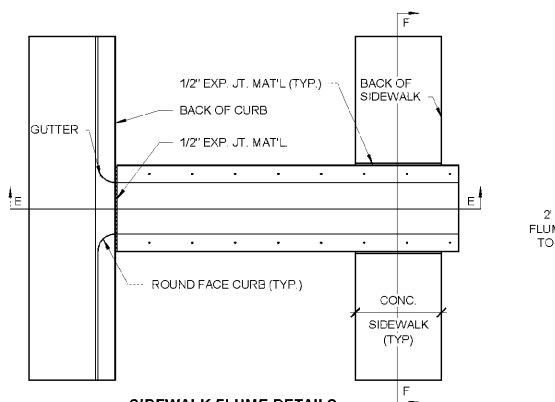
10 STONE @ ENTRY
 1/2" = 1'-0"



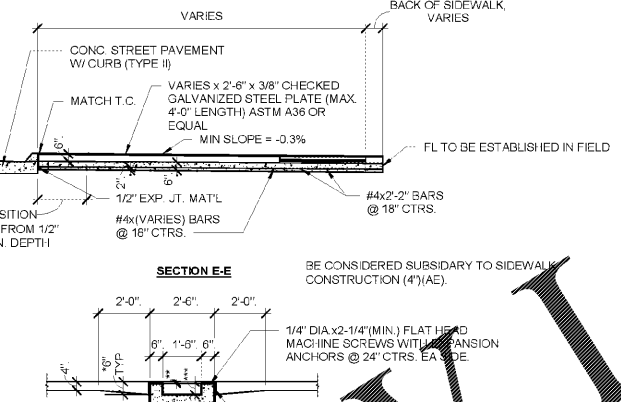
9 DOWNSPOUT CONNECTION
 1/2" = 1'-0"



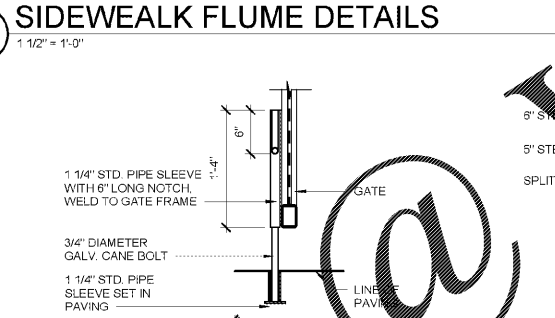
7 MASONRY VENEER WALL ASSEMBLY
 12" = 1'-0"



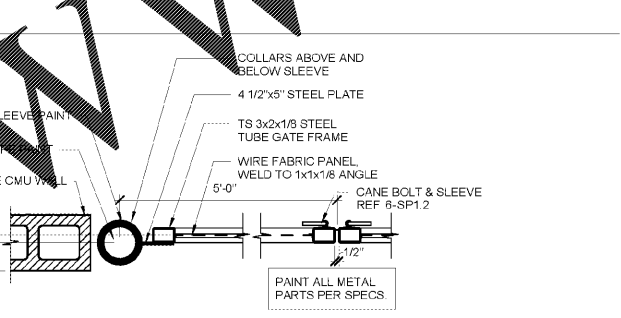
8 SIDEWALK FLUME DETAILS
 1/2" = 1'-0"



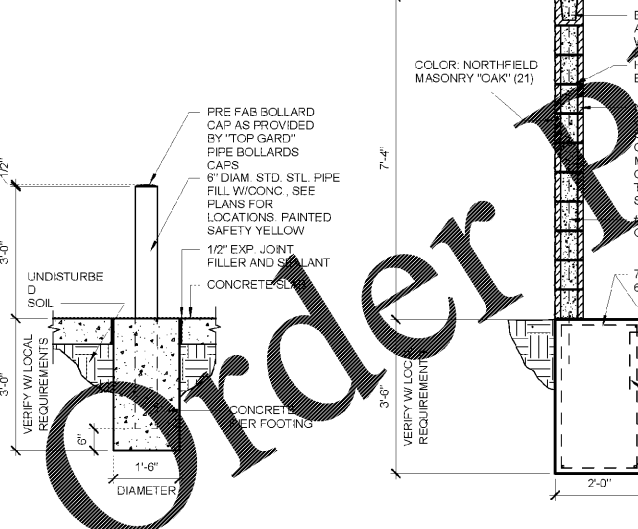
SECTION E-E
 BE CONSIDERED SUBSIDIARY TO SIDEWALK CONSTRUCTION (4') (AE).



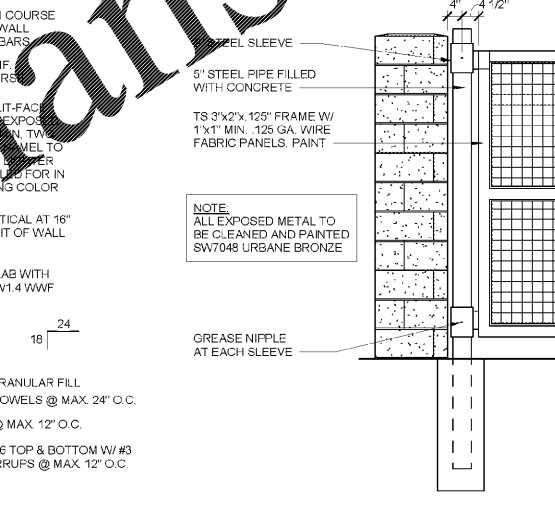
6 LATCH DETAIL
 1" = 1'-0"



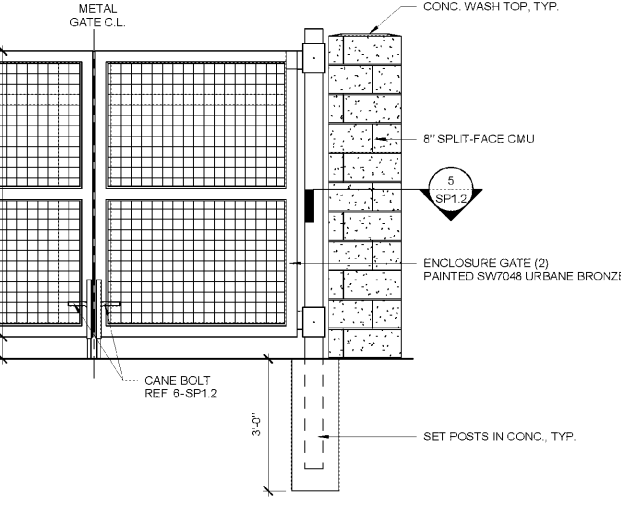
5 SECTION THROUGH GATE
 1" = 1'-0"



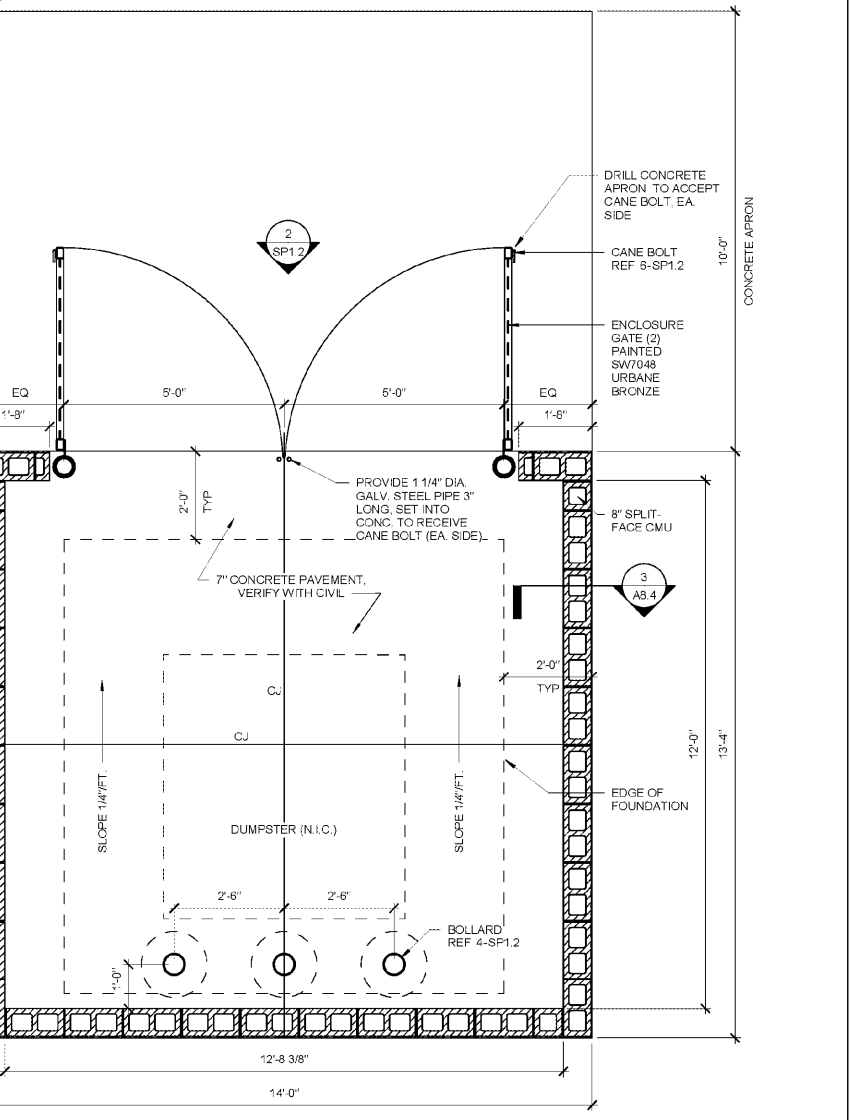
4 PIPE BOLLARD
 1/2" = 1'-0"



3 TRASH ENCLOSURE WALL SECTION
 1/2" = 1'-0"



2 TRASH ENCLOSURE GATE ELEVATION
 1/2" = 1'-0"



1 TRASH ENCLOSURE PLAN
 1/2" = 1'-0"

11/2/2018 2:09:38 PM

WOODSPRING SUITES
 CYPRESS CREEK, FLORIDA
 Pasco County
 Cypress Creek, FL

Issues & Revisions:

Proj. No.: 078761
 Date: 11/02/2018

Sheet Name:
 TRASH ENCLOSURE & DETAILS

SP1.2