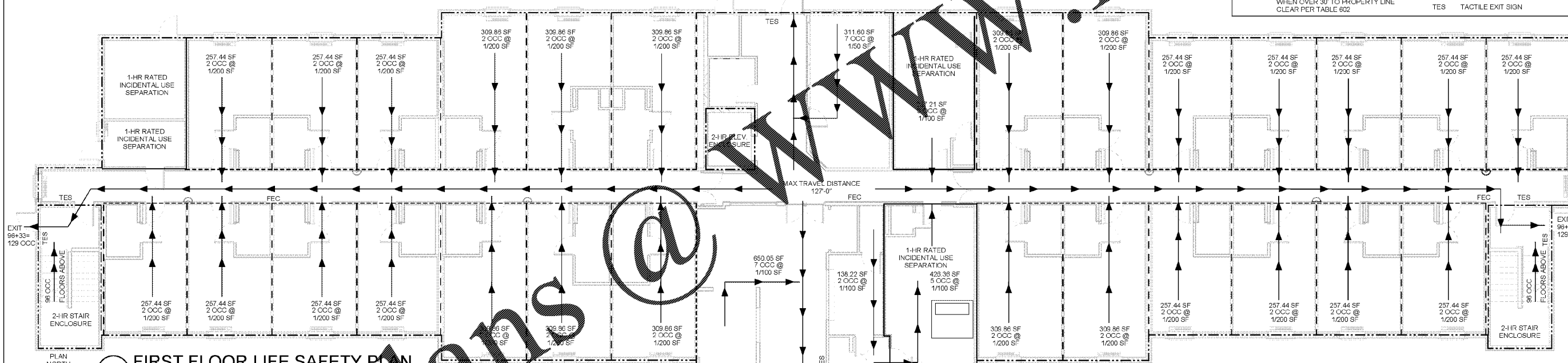


TYPICAL FLOOR LIFE SAFETY PLAN



PARTITIONING KEY

--- 2-HR FIRE BARRIER ASSEMBLY FBC SECTION 707.3.2 EXIT ENCLOSURES (FIRE AND SMOKE) AND EXTERIOR BEARING WALLS PER TABLE 601	--- 1-HR FIRE PARTITION ASSEMBLY FBC SECTION 708.1 DEMISING WALL
--- 1-HR FIRE BARRIER ASSEMBLY FBC SECTION 707.3.7 INCIDENTAL USE AREA	--- 1-HR FIRE PARTITION ASSEMBLY FBC SECTION 708.3 CORRIDOR (FIRE AND SMOKE)
--- 1-HR INSIDE PROTECTION UL #356 04-HR OUTSIDE PROTECTION WHEN OVER 30' TO PROPERTY LINE CLEAR PER TABLE 602	--- DIRECTION OF EGRESS
	--- FEC FIRE EXTINGUISHER CABINET
	--- TES TACTILE EXIT SIGN



FIRST FLOOR LIFE SAFETY PLAN



DESCRIPTION
CMU EXTERIOR WALL WITH APPLIED STACKED STONE & STUCCO FINISH.
TYPE R-1 OCCUPANCY
TYPE III-B CONSTRUCTION
FOUR STORY HOTEL

FIRE PROTECTION FEATURES
BUILDING IS PROVIDED WITH AUTOMATIC SPRINKLER SYSTEM THROUGHOUT DESIGNED IN ACCORDANCE WITH NFPA 13 WET SPRINKLER IN ATTIC IN LIEU OF DRAFTSTOPPING PORTABLE FIRE EXTINGUISHERS.
MAX TRAVEL COMPLETE FIRE ALARM SYSTEM PER SECTION 903.2.5
PROJECT FOR DRY SYSTEM, DRIP DRUMS TO BE LOCATED IN ROOM #144 ON EXTERIOR WALL, DRAIN TO EXTERIOR OR LOCATION APPROVED BY AHJ.

CODE DATA - INTERIORS - BUILDING CODE
OCCUPANCY GROUP: R-1
SECTION 503 OCCUPANCY TYPE III-B (RESIDENTIAL HOTELS)
BASIC ALLOWABLE HEIGHT & BUILDING AREA (TABLE 503)
CONSTRUCTION TYPE III-B - 4 STORIES / 70 FT/98,000 S.F./FL (BEFORE MODIFICATIONS)

SECTION 504 HEIGHT MODIFICATIONS
504.2 AUTOMATIC SPRINKLER INCREASE PER SECTION 903.3.1.1 ONE STORY INCREASE
20 FT HEIGHT INCREASE

SECTION 506 AREA MODIFICATIONS
506.3 STREET FRONTAGE INCREASE NOT TAKEN

TABLE 601 CONSTRUCTION TYPE III-B
SECTION 718 FIREBLOCKING, REQUIRED
SECTION 718.3.2 DRAFTSTOPPING IN FLOORS
SECTION 718.3.2.5 GROUP R, AUTOMATIC SPRINKLER SYSTEM THROUGHOUT.
SECTION 1009 STAIRWAYS: NO EXCEPTIONS TAKEN
SECTION 1022 INTERIOR EXIT STAIRWAYS AND RAMPES: STAIR ENCLOSURE TO BE MINIMUM OF 2-HR FIRE RATED
SECTION 1022.10 SMOKEPROOF ENCLOSURES; NOT REQ. WHERE TOP FLOOR IS LESS THAN 75 FT ABOVE FIRE DEPARTMENT ACCESS (FLOOR LEVEL OF FOURTH FLOOR IS 28'-6")

MEANS OF EGRESS
1. NUMBER OF EXITS 2 PER FLOOR
2. TRAVEL DISTANCE 250 MAX
3. DEAD END CORRIDORS 50 FT MAX w/ SPRINKLER
4. CORRIDOR WIDTH 44 INCH MIN
5. SIZE OF EGRESS DOORS 32 INCH CLEAR MIN

CONCEALED SPACES (SECTION 718 & NFPA 13)
A. DRAFTSTOPPING FLOORS. REFER TO SECTION 718 AND APPROPRIATE SECTIONS IN NFPA
B. DRAFTSTOPPING ATTICS. REFER TO SECTION 718 SAME REQUIREMENT AS THOSE ABOVE
C. FIRE BLOCKING WALLS. REFER TO SECTION 718 SAME REQUIREMENT AS THOSE ABOVE

PENETRATIONS THROUGH FIRE RATED ASSEMBLIES
A. REFER TO SECTION 714
B. FIRE BLOCKING (BOTH VERTICAL AND HORIZONTAL)
C. CONCEALED SPACES SHALL BE FIRE STOPPED AS FOLLOWS: -10' INTERVALS BEHIND TRIM FINISHES.

FIRE BLOCKING (CONCEALED SPACES) SECTION 718
A. FIRE BLOCKING (BOTH VERTICAL AND HORIZONTAL)
B. CONCEALED SPACES SHALL BE FIRE STOPPED AS FOLLOWS: -10' INTERVALS BEHIND TRIM FINISHES.

ACCESS BOX SHALL BE OF AN APPROVED TYPE IN ACCORDANCE WITH UL 1037 MOUNTED AT FRONT ENTRANCE APPROXIMATELY 5' A.F.F.
EITHER THE OWNER'S REP OR CONTRACTOR SHALL CONDUCT A PRELIMINARY INITIAL ASSESSMENT TO DETERMINE IF THE MINIMUM RADIO SIGNAL STRENGTHS FOR FIRE DEPARTMENT COMMUNICATION IS IN COMPLIANCE WITH BROWARD COUNTY AMENDMENT STANDARDS.

PROVIDED
2 PER FLOOR
127 FEET MAX
10 FT MAX
60 INCH MIN
34 INCH CLEAR MIN

ELEVATOR
REQUIRED TO MEET ASME A17.1

NOTE: SEE PARTITION TAGS AND SCHEDULE FOR COMPLETE LISTING OF UL NUMBERS

ALLOWABLE ACTUAL
4 STORIES 4 STORIES
36,300 SQ FT PER STORY 12,100 SQ FT
70 FT HEIGHT 48' - 1 1/4" HEIGHT
(FROM GROUND PLANE PER FBC SECTION 510.4)

ACCESSIBLE UNITS - ** (INCLUDES HEARING IMPAIRED)

NON-ACCESSIBLE	67	36	10	TOTAL	116
ACCESSIBLE **	-	2	1		3
ROLL-IN SHOWER **	2	-	-		2
TRANSFER SHOWER**	4	-	-		2
TOTAL	73	38	11		122

OCCUPANT LOAD TABLE

FLOOR	OCC. TYPE (From FBC Table 1004.1.2)	AREA	FACTOR	OCC. LOAD
FIRST	A (ASSEMBLY)	298 SF	15 OR 50	20
	B (BUSINESS)	810 SF	100	90
	R-1 (RESIDENTIAL)	7,522	200 (2/room)	52 (26 rooms)
UPPER (3) FLOORS	R-1 (RESIDENTIAL)	9,183 SF	200 (2/room)	64 (32 rooms)
TOTAL		36,179 SF		273

GUESTROOM DATA

FLOOR	QS	2/QS	ACC. QS	ACC. 2/QS	DIGS	ACC. DIGS	TOTAL
FIRST LEVEL	16	6	4	-	3	-	29
SECOND LEVEL	17	10	1	-	3	-	32
THIRD LEVEL	17	10	-	-	4	-	32
FOURTH LEVEL	17	10	-	-	4	-	32
TOTAL	67	36	6	2	10	1	122
PERCENTAGES	54%	30%	5%	2%	8%	1%	100%

ACCESSIBLE UNITS

NO. OF UNITS	DESCRIPTION	ROOM NO.
3	BATH W/TUB	217, 317, 417
4	TRANSFER SHOWER	122, 124, 215, 315
2	ROLL-IN SHOWER	121, 123
12	HEARING IMPAIRED	124, 125, 126, 224, 225, 226, 324, 325, 326, 415, 425, 426

FIRE RESISTIVE RATINGS (TABLE 601)

STRUCTURAL ELEMENT	F.R. RATING PER CODE	F.R. RATING PER DESIGN	DESIGN NUMBER	DETAIL REFERENCE
BEARING WALLS (III-A)	2 HOUR	2 HOUR	U.L. #U905	6/A8.4
EXT. WALLS (R1)	2 HOUR	2 HOUR	U.L. #U305	2/A8.3
INT. WALLS	1 HOUR	1 HOUR	U.L. #U327	1/A8.3
CORRIDOR WALLS (R1)	30 MIN	1 HOUR	U.L. #U451	12/A8.3
OPENING PROTECTION	20 MIN	20 MIN	---	---
GUESTROOM SEPARATION	1 HOUR	1 HOUR	U.L. #U905	6/A8.4
OPENING PROTECTION	45 MIN	60 MIN	---	---
STAIR (INT. WALLS)	2 HOUR	2 HOUR	U.L. #U305	6/A8.4
STAIR (EXT. WALLS)	2 HOUR	2 HOUR	U.L. #U305	6/A8.4
OPENING PROTECTION	90 MIN	90 MIN	---	---
ELEVATORS	2 HOUR	2 HOUR	U.L. #U905	6/A8.4
OPENING PROTECTION	90 MIN	90 MIN	---	---
CEILING	2 HOUR	2 HOUR	GA FC 5726	11/A8.3
STORAGE	1 HOUR	1 HOUR	U.L. #U305	2/A8.3
OPENING PROTECTION	45 MIN	45 MIN	---	---
LAUNDRY (GUEST)	1 HOUR	1 HOUR	U.L. #U305	2/A8.3
OPENING PROTECTION	45 MIN	45 MIN	---	---
LAUNDRY TO GUEST	1 HOUR	1 HOUR	U.L. #U341	8/A8.4
FLOOR - CEILING	1 HOUR	1 HOUR	U.L. #U521	3/A8.3
FLOOR-CEILING @ CORR	1 HOUR	1 HOUR	GA FC 5107	4/A8.3
ROOF - CEILING @ STAIR	1 HOUR	2 HOUR	GA - RC 2751	7/A8.4
ROOF - CEILING	1 HOUR	1 HOUR	GA - RC 2802	5/A8.3

WOODSPRING SUITES
CYPRESS CREEK, FLORIDA
Pasco County
Cypress Creek, FL

Issues & Revisions:
Proj. No.: 078761
Date: 11/02/2018

Sheet Name:
BUILDING CODE AND LIFE SAFETY PLANS

LS1.1

100% OWNER REVIEW | 11.02.18