

Figure 404.2.4.1
 Maneuvering Clearances at Manual Swinging Doors and Gates

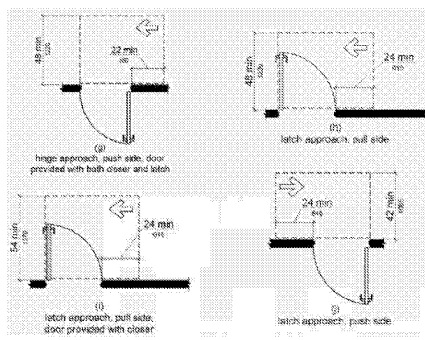


Figure 404.2.4.1
 Maneuvering Clearances at Manual Swinging Doors and Gates

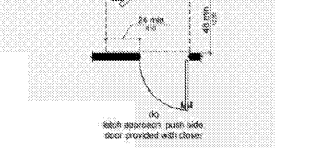


Figure 404.2.4.1
 Maneuvering Clearances at Manual Swinging Doors and Gates

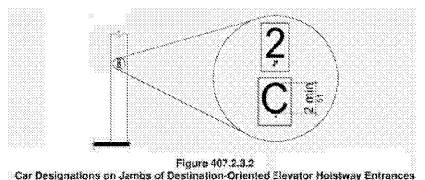


Figure 407.2.3.2
 Car Designations on Jambes of Destination-Oriented Elevator Hoistway Entrances

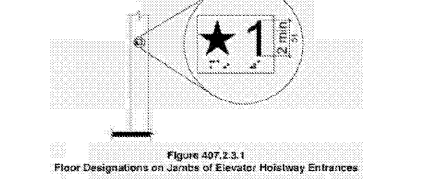


Figure 407.2.3.1
 Floor Designations on Jambes of Elevator Hoistway Entrances

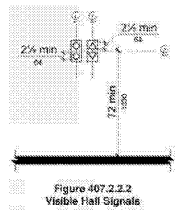


Figure 407.2.2.2
 Visible Hall Signals

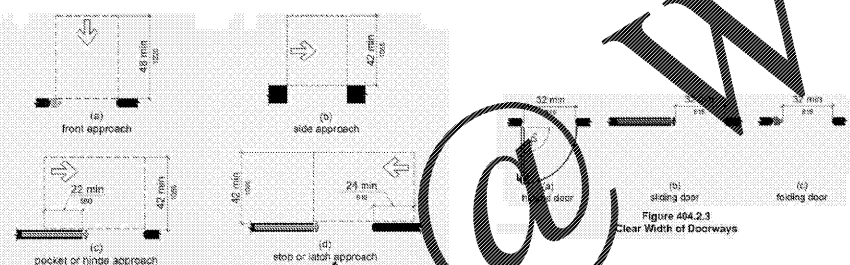


Figure 404.2.3
 Clear Width of Doorways

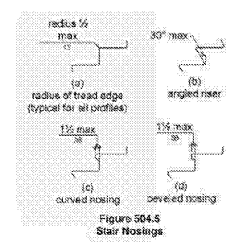


Figure 504.5
 Stair Nosings

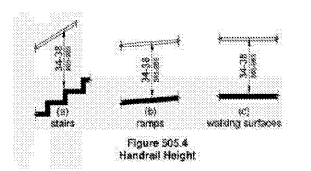


Figure 505.4
 Handrail Height

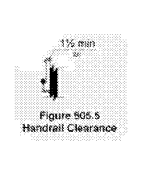


Figure 505.5
 Handrail Clearance

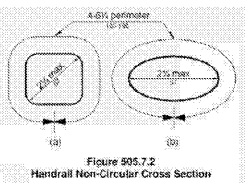


Figure 505.7.2
 Handrail Non-Circular Cross Section

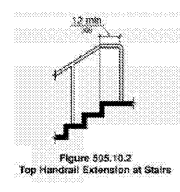


Figure 505.10.2
 Top Handrail Extension at Stairs

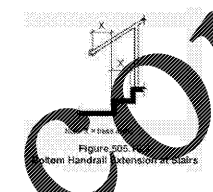


Figure 505.10.1
 When Handrail Extension at Stairs

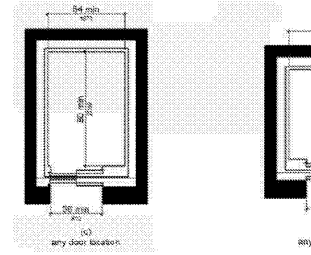


Figure 407.4.1
 Elevator Car Dimensions

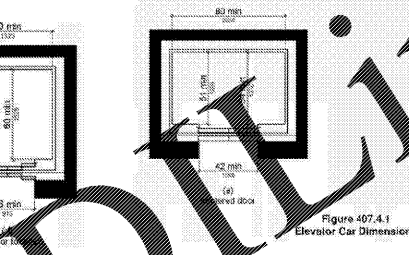


Figure 407.4.1
 Elevator Car Dimensions

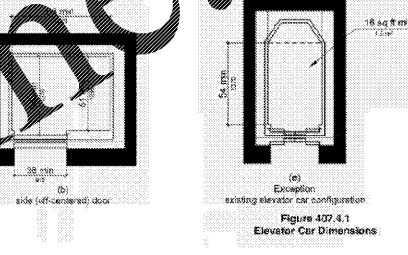


Figure 407.4.1
 Elevator Car Dimensions

Table 407.4.7.1.3 Elevator Control Button Identification

Control Button	Tactile Symbol	Braille Message
Emergency Stop	⊗	*STOP These cells
Alarm	🔔	ALARM Press cells
Door Open	↔	*OPEN These cells
Door Close	↔	CL Press cells
Main Entry Floor	★	*MAIN These cells
Phone	☎	*PHONE Four cells

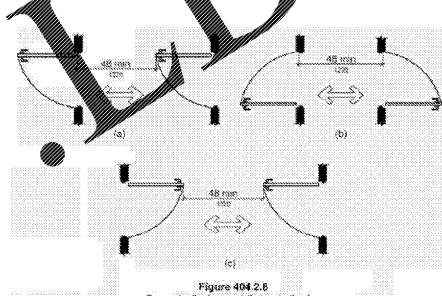


Figure 404.2.6
 Doors in Series and Gates in Series

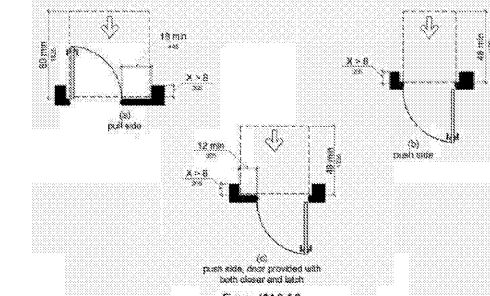


Figure 404.2.4.3
 Maneuvering Clearances at Recessed Doors and Gates

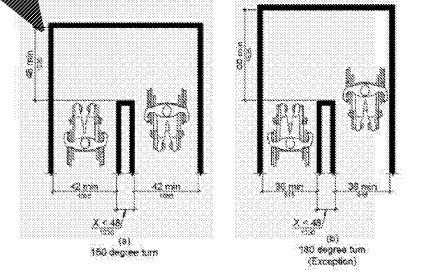


Figure 403.5.2
 Clear Width at Turn

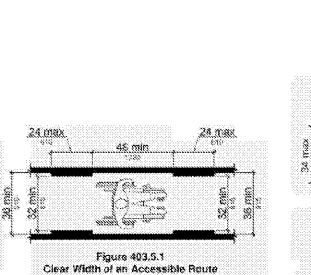


Figure 403.5.1
 Clear Width of an Accessible Route

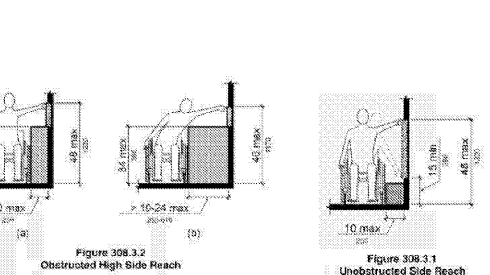


Figure 308.3.3
 Obstructed High Side Reach

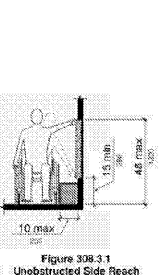


Figure 308.3.1
 Unobstructed Side Reach

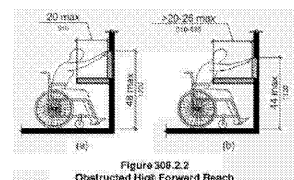


Figure 305.2.2
 Obstructed High Forward Reach

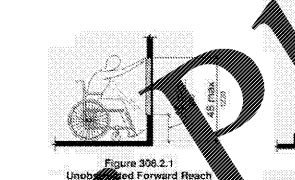


Figure 305.2.1
 Unobstructed Forward Reach

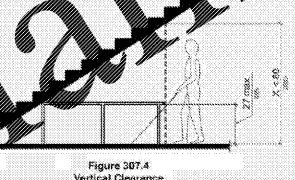


Figure 307.4
 Vertical Clearance

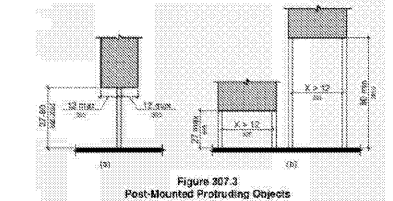


Figure 307.3
 Post-Mounted Protruding Objects

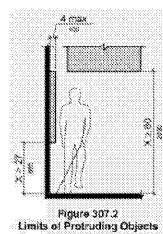


Figure 307.2
 Limits of Protruding Objects

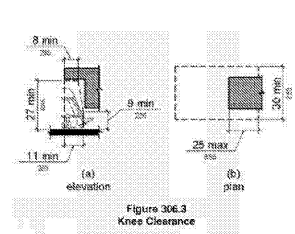


Figure 306.3
 Knee Clearance

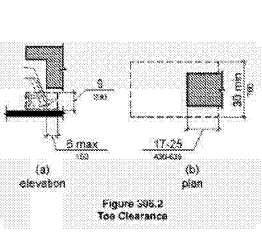


Figure 306.2
 Toe Clearance

GENERAL NOTE

THIS DATA IS PROVIDED AS AN ADDITIONAL RESOURCE TO THE TEAM OF OWNER, CLIENT ARCHITECT, ENGINEER, AND SPECIFICALLY, CONTRACTOR. THIS IS A TOOL TO APPRISE ALL PARTIES OF GENERAL ACCESSIBLE CONDITIONS AS PUBLISHED PER THE ADAAG (AMERICANS WITH DISABILITIES ACT), AND THE ACCESSIBILITY GUIDELINES FOR BUILDINGS AND FACILITIES. THE DIAGRAMS ARE VERBATIM DUPLICATIONS OF THE ADAAG STANDARDS AND ARE NOT INDICATIVE OF ALL CONDITIONS AND CERTAINLY DO NOT FULLY REPRESENT THE ENTIRETY OF THE WRITTEN GUIDELINES AS CONTAINED IN THE STANDARDS. THIS DATA IS IN SUPPORT OF GENERAL ARCHITECTURAL & ENGINEERING DOCUMENTATION, WHICH IS INTENDED TO BE CONSISTENT WITH ACCESSIBLE CONDITIONS. HOWEVER, THE ADAAG IS NOT A BUILDING CODE AND NOT NECESSARILY ENFORCEABLE OR ENFORCEABLE BY TRADITIONAL BUILDING AUTHORITIES. THE ADAAG IS A CIVIL STATUTE. THEREFORE, THE ENTIRE TEAM OF OWNER, CLIENT, ARCHITECT, ENGINEER, AND SPECIFICALLY, CONTRACTOR IS RESPONSIBLE FOR COMPLIANCE TO THE SPECIFIC INTENT OF THE LAW. THIS DATA IS PROVIDED TO ACT AS AN ADDED SAFEGUARD TO FULLY FAMILIARIZE THE TEAM WITH EXPECTATIONS ASSOCIATED WITH THE ADAAG STANDARD AND TO ASSIST THE TEAM IN ACHIEVING FULLY ACCESSIBLE CONDITIONS AS REQUIRED BY CIVIL LAW. WE ENCOURAGE THE DETAILED REVIEW BY OWNER AND CONTRACTOR.

FOR QUESTIONS REGARDING ADAAG CONTACTS:
 U.S. DEPARTMENT OF JUSTICE
 CIVIL RIGHTS DIVISION
 TELEPHONE: (800) 514-0301
 WWW.USDOJ.GOV/CRT/ADA/ADAHOM1.HTM

Issues & Revisions:

Proj. No.: 078761
 Date: 11/02/2018

Sheet Name:
 ADA REFERENCE
 DETAILS

G1.2