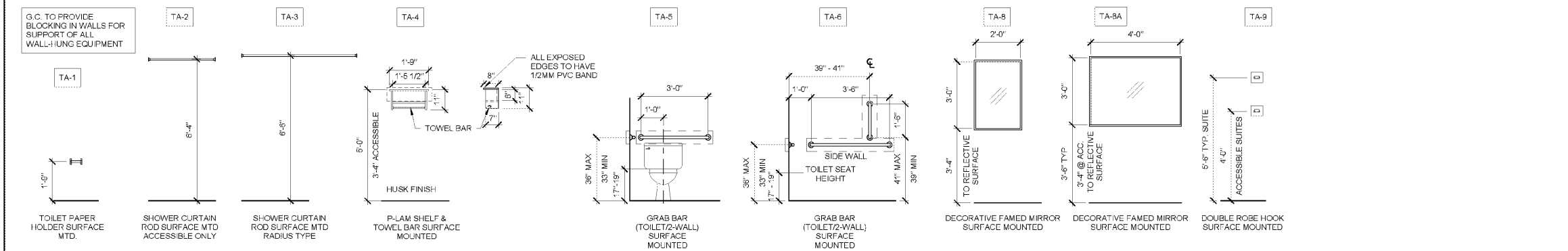
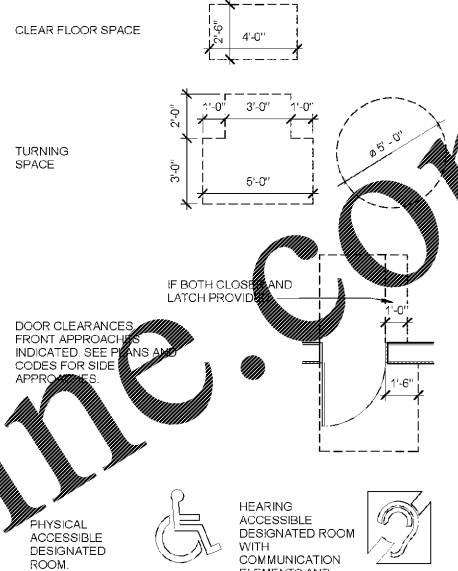


TOILET ACCESSORIES



ACCESSIBILITY SYMBOL LEGEND



WOOLPERT
 475 Northridge Road
 Suite 300
 Atlanta, GA 30350
 770.391.4095
 FAX: 770.391.4104

GENERAL NOTES

- ALL DIMENSIONS FROM FINISH TO COMPONENT AND /OR FROM FINISH FLOOR UNLESS OTHERWISE NOTED.
- PROVIDE CAULK AT ALL CABINET, COUNTERTOP, AND BACK SPLASH LOCATIONS WHERE INSTALLATION MEETS A SURFACE. CAULKING MUST BE LEVEL OR SLIGHTLY COVED AT JOINT. UTILIZE BACKER ROD WHERE JOINT EXCEEDS 1/4" TOOL AND FINISH JOINTS. LEAVE NO VISIBLE GAPS. TYPICAL ALL LOCATIONS. COLOR TO MATCH ADJACENT SURFACE.
- PROVIDE CAULK AT ALL CABINET END PANELS WHERE INSTALLATION MEETS A SURFACE. IF JOINT EXCEEDS 1/8" WIDE INSTALL TRIM MOLDING TO MATCH CABINET FINISH AND CAULK. CAULK COLOR TO MATCH LAMINATED SURFACE.
- PROVIDE ADDITIONAL FRAMING FOR OUTLETS AS REQUIRED TO MOUNT IN POSITIONS AS SHOWN. (4" MAX HORIZONTAL TOLERANCE)
- PROVIDE INSTALLATION KIT WITH COOK TOP. CUT OUT COUNTER FOR COOK TOP TO MAX 1/2" TOLERANCE. SECURE CABLE TO BACK OF CABINET BEHIND SHELF. INSTALL SECURELY WITH CLEAR SILICONE.
- ALL BLOCKING FOR ACCESSIBLE COMPONENTS TO BE WOOD BETWEEN STUDS.
- PROVIDE VINYL BASE AT BOTTOM OF ALL EXPOSED PORTIONS OF CABINETS AS WELL AS AROUND WALLS. VINYL BASE TO BE FURNISHED FROM ROLL STOCK INSTALLED IN THE LONGEST LENGTH POSSIBLE WITH INSIDE AND OUTSIDE CORNERS SECURED TIGHTLY TO WALL SURFACES.
- TRIP LEVELS ON ADA TOILETS TO BE LOCATED ON SINK SIDE OF TANK.
- ALL BLOCKING FOR FURNITURE SHALL BE COORDINATED WITH FURNITURE SUPPLIER SHOP DRAWINGS.
- NO FLOORING TILE LENGTHS TO BE CUT LESS THAN THE WIDTH OF THE TILE AND NO RIPS LESS THAN HALF THE TILE WIDTH, TYPICAL.
- REF. STRUCT. DWGS FOR P38 SHEARWALL LOCATIONS (TYP).
- SEE SHEETS A1.1 AND 1.2 FOR WINDOW LOCATIONS, DIMENSIONS, AND TYPES.
- PROVIDE WATER RESISTANT 5/8" GYP. BD. FROM FLOOR TO BOTTOM OF WINDOW SILL AND EXTEND OUT 12" FROM EITHER SIDE OF WINDOW FRAME.
- PROVIDE CORNER GUARD AT ALL 90 DEGREE CORNERS. REF SPECS.

ACCESSORIES SCHEDULE

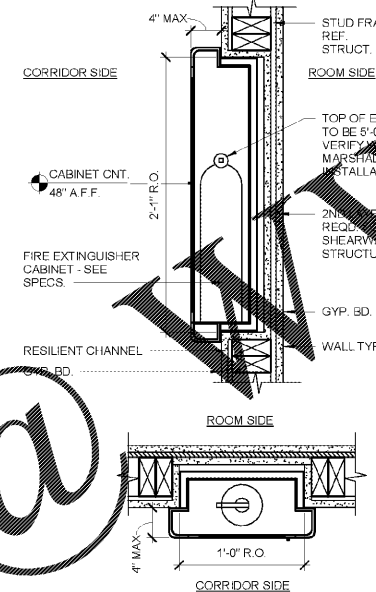
TA #	ACCESSORY DESCRIPTION	BRAND / MODEL
TA-1	TOILET PAPER HOLDER (SURFACE MTD)	LIBERTY / VOISIN EK33
TA-2	STRAIGHT SHOWER CURTAIN ROD (SURFACE MTD)	WINGIT / WOCNSNT5
TA-3	5' STD BOW SHOWER ROD (NON-ACCESSIBLE)	WINGIT / WOCNSN5NC
TA-4	PLAM SHELF AND TOWEL BAR (SURFACE MTD)	OWNER PROVIDED AND INSTALLED
TA-5	GRAB BAR - TOILET (SURFACE MTD)	BRADLEY / 8120-001420
TA-6	GRAB BAR - TOILET (SURFACE MTD)	BRADLEY / 8120-001180
TA-8	24"X36" DECORATIVE FRAMED MIRROR (SURFACE MTD)	OWNER PROVIDED AND INSTALLED
TA-8A	48"X36" DECORATIVE FRAMED ILLUMINATED MIRROR (SURFACE MTD)	OWNER PROVIDED AND INSTALLED
TA-9	ROBE HOOK (SURFACE MTD)	TAYMOR / 02-D9402

ABBREVIATION LEGEND

- AT = ATTACHED
- BD = BOARD
- BL = BLOCKING
- BO = BY OWNER
- BOF = BOTTOM OF FOOTING/FOUNDATION
- BOS = BOTTOM OF STEEL
- BRDG = BRIDGING
- BRG = BEARING
- CH = CHANNEL
- CAB = CABINET
- CBD = CABINET BOARD
- CC = CEMENT
- CCTV = CLOSED CIRCUIT TELEVISION
- CG = CORNER GUARD
- CJ = OR CJT - CONSTRUCTION JOINT CONTROL JOINT
- CL = CENTER LINE
- CLR = CLEAR
- CM = CONCRETE MASONRY UNIT
- CS = CONCRETE
- CC = COULTER
- CC = CARPET OR CARPET TILE
- CS = CASEWORK
- CB = CERAMIC TILE
- DBL = DOUBLE
- DF = DRINKING FOUNTAIN
- DIA = DIAMETER
- DIM = DIMENSION
- DIST = DISTANCE
- DN = DOWN
- DR = DOOR
- DS = DOWNSPOUT
- DW = DISH-WASHER
- EA = EACH
- EFS = EXTERIOR INSULATION FINISH SYSTEM
- EJ = EXPANSION JOINT
- EL = ELEVATION
- ELEC = ELECTRICAL
- ELEV = ELEVATOR
- EPS = EXPANDED POLYSTYRENE BOARD (INSULATION)
- EQ = EQUAL
- EVNS = EYE WASH STATION
- EXP = EXHAUST FAN
- EXIST = EXISTING
- EXP = EXPOSED
- EXT = EXTERIOR
- FC = FILE CABINET
- FD = FLOOR DRAIN
- FDC = FIRE DEPARTMENT CONNECTION
- FDR = FIRE DOOR
- FE = FIRE EXTINGUISHER
- FEC = FIRE EXTINGUISHER CABINET
- FF&E = FURNITURE, FIXTURE, AND EQUIPMENT
- FIN = FINISH
- FLR = FLOOR
- FRP = FIBERGLASS REINFORCED PLASTIC
- FT = FEET OR FOOT
- FTG = FOOTING
- FURN = FURNITURE
- GA = GAUGE
- GL = GLASS
- GLZ = GLAZING
- CEILING
- GR = GUARDRAIL
- GYP = GYPSUM
- GYP BD OR GYB OR GWB = GYPSUM BOARD
- H = HOSE BIBB
- HC = HANDICAP
- HDWR = HARDWARE
- HM = HOLLOW METAL
- HMF = HOLLOW METAL FRAME
- HNDRL = HANDRAIL
- HORIZ = HORIZONTAL
- HR = HANDRAIL
- HT = HEIGHT
- HVAC = HEATING, VENTILATING, AND AIR CONDITIONING
- J-BOX = JUNCTION BOX
- JT = JOINT
- L = ANGLE
- LAM = LAMINATE
- LDRY = LAUNDRY
- LAV = LAVATORY
- LED = LIGHT EMITTING DIODE
- LF = LINEAR FEET (FOOT)
- LN = LINEAR
- LOC = LOCATION
- LRG = LARGE
- LTG = LIGHTING
- LVR = LOUVER
- MAINT = MAINTENANCE
- MAX = MAXIMUM
- MECH = MECHANICAL
- MEP = MECHANICAL, ELECTRICAL AND PLUMBING
- MFR = MANUFACTURE
- MIR = MIRROR
- MISC = MISCELLANEOUS
- MLWK = MILLWORK
- MASON = MASONRY
- MNT = MOUNT
- MW = MICROWAVE
- N = NORTH
- NO = NO CONTRACT
- NO = NUMBER
- NCM = NOMINAL
- NTS = NOT TO SCALE
- OCCUPANT
- O/F/OI = OWNER FURNISHED/OWNER INSTALLED
- OFS = OUTSIDE FACE OF STUD
- OS = OVERFLOW SCUPPER
- OH = OVERHEAD
- OPNG = OPENING
- PL = PROPERTY LINE
- PLAM = PLASTIC LAMINATE
- PLBG = PLUMBING
- PNL = PANEL
- FR = PAIR
- PRELIM = PRELIMINARY
- PROP = PROPERTY
- PT = PAINT
- QTY = QUANTITY
- R = RADIUS
- R = RISER
- RAF = RESILIENT ATHLETIC FLOORING
- RB = RUBBER BASE
- ROP = REFLECTED CEILING PLAN
- RD = ROOF DRAIN
- REC = RECESSED
- RECT = RECTANGLE
- REQ OR REQD = REQUIRE OR REQUIRE
- RFS = ROOM FINISHES SCHEDULE
- RM = ROOM
- RO = ROUGH OPENING
- S = SOUTH
- SAN = SANITARY
- SCHED = SCHEDULE
- SECT = SECTION
- SD = SHOWER DRAIN
- SHT = SHEET
- SIM = SIMILAR
- SM = SMALL
- SP = STANDPIPE
- SPEC = SPECIFICATION
- SS = SOLID SURFACE
- SST = STAINLESS STEEL
- ST = STAIRS
- STC = SOUND TRANSMISSION CLASS
- STD = STANDARD
- STRUC = STRUCTURAL
- SW = SWITCH
- SYM = SYMBOL
- T = THERMOSTRAT
- TEMP = TEMPERED GLASS
- TEL = TELEPHONE
- TEMP = TEMPORARY
- TOB = TOP OF BEAM
- TOC = TABLE OF COLUMN
- TOP = TOP OF FOOTING/FOUNDATION
- TOS = TOP OF STEEL
- TOW = TOP OF WALL
- TS = TRANSITION STRIP
- TV = TELEVISION
- TYP = TYPICAL
- UCD = UNDERCUT DOOR
- UL = UNDERWRITERS LABORATORIES
- UNO = UNLESS NOTED OTHERWISE
- VAN = VANITY
- VB = VINYL BASE
- VCT = VINYL COMPOSITION TILE
- VENT = VENTILATION OR VENTILATOR
- VERT = VERTICAL
- VEST = VESTIBULE
- VIF = VERIFY IN FIELD
- VER = VERIFY
- VTR = VENT THROUGH ROOF
- VWC = VINYL WALL COVERING
- W = WEST
- W/ = WITH
- W/O = WITHOUT
- WAP = WIRELESS ACCESS POINT
- WB = WALL BORDER
- WC = WALL COVERING
- WD = WOOD
- WP = WALL PROTECTION
- WPM = WATERPROOF MEMBRANE
- WR = WEATHER RESISTANT
- WS = WEATHERSTRIP
- WSCT = WAINSCOT
- WT = WINDOW TREATMENT

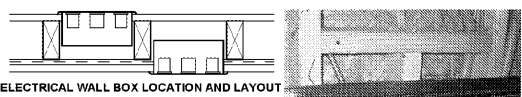
FINISH SCHEDULE

COLOR SCHEME	SUITES	COMMENTS
MARK	MORNING GLORY SCHEME	* VERIFY COLOR SCHEME SELECTION WITH OWNER
PT-1	SW7043 "WORLDLY GRAY" PPG1007-2 "SWIRLING SMOKE"	PRIMARY RECEPTION, LOBBY, ELEVATOR LOBBY, STAFF/GUEST LAUNDRY, PUBLIC RESTROOM, FITNESS CENTER, CORRIDOR WALL COLOR, TRAINING
PT-2	SW7619 "LABRODORITE" PPG1153-5 "CHALKY BLUE"	ACCENT WALLS, GUESTROOM WALL, GUEST BATHROOM WALL, CORRIDOR WALL
PT-3	SW6430 "GREAT GREEN" PPG11-13 "SPARROW SONG"	ACCENT WALLS, LOBBY, GUEST LAUNDRY, FITNESS
PT-4	SW7638 "ORIGAMI WHITE" PPG1007-1 "WILLOW SPRINGS"	PRIMARY GUESTROOM WALL COLOR, CEILINGS THROUGHOUT
PT-5	SW7073 "NETWORK GREY" PPG641-4 "SILVER CHARM"	PUBLIC RESTROOMS, REGISTRATION, TRAINING
LVT-1	SHAW HARD SURFACE - SOLITUDE #0648V - COLOR "48540 URBAN ASH" (6"X48") MOHAWK - HOT AND HEAVY C0009 (SECOYA) - "936 CONVERSE BASIN" (9"X59") KARNDEAN LOOSELAY SERIES THREE "HARTFORD LLP112" (41.3"X9.85")	ALL PUBLIC SPACES
LVT-2	SHAW HARD SURFACE - SOLITUDE #0648V - COLOR "48103 COCOA" (6"X48") MOHAWK - HOT AND HEAVY C0009 (SECOYA) - "142 KEW GARDENS" (9"X59") KARNDEAN LOOSELAY SERIES THREE "STAMFORD LLP109" (41.3"X9.85")	GUESTROOMS
LVT-3	SHAW - CRETE 0203V "HAZE 03720" (18" X 18") MOHAWK - SELECT STEP "T010M IMPERIAL GRAY" (18" X 18") KARNDEAN DA VINCI "SANIT LIMESTONE LST03" (16"X16")	STAFF LAUNDRY, STORAGE ROOMS
RF-1	ECOSURFACES - ECOFIT 8MM (3.2MM WEAR LAYER OVER 5MM BACKING) - 1213 ACTION (ROLLS 4X25')	FITNESS FLOORING
PL-1	PLASTIC LAMINATE - WILSONART 7969 K-12 "WAREHOUSE OAK"	REFF CASEWORK
PL-2	FORMICA 933-59 "MISSION WHITE"	WALL SILLS
PL-3	PLASTIC LAMINATE - WILSONART 4641-60 "DESERT ZEPHYR"	KITCHEN COUNTERTOPS
FRP-1	CRANE COMPOSITES - 8044 "PEPPER DUST" LINEN TEXTURE (SATIN) W/ INPRO 500 PEPPER DUST WALL GUARD	ALL PUBLIC SPACES, SHOWER BACKSLASH
FRP-2	CRANE COMPOSITES - 85 "WHITE" - GLASBORD	STAFF LAUNDRY
WB-1	JOHNSONITE - 4" TRADITIONAL WALL BASE - 32 PEBBLE	THROUGHOUT UNLESS OTHERWISE NOTED
WB-2	JOHNSONITE - 4" TRADITIONAL WALL BASE - T81 PEPPER GRAY	CABINET BASE (INSTALLED BY FLOORING CONTRACTOR)
WB-3	JOHNSONITE - 2.5" TOELESS WALL BASE - T81 PEPPER GRAY	CASEGOOD BASE (INSTALLED BY FLOORING CONTRACTOR)
WC-1	TRIKES - CUSTOM WALL COVERING WITH PEPPER GRAY LOGO KORSEAL - CUSTOM WALL COVERING WITH INTERIOR LEAF L230	LOBBY WALL
ST-1	STAIN: CLEAR SEALANT FINISH	FRONT DESK & BENCH SEAT IN LOBBY



SECTION AT FIRE EXTINGUISHER CAB

NOTE: WHEN INSTALLING ELECTRICAL OUTLET BOXES IN SHEAR WALL, CONTRACTOR SHALL CUT OPENINGS NEATLY, IN ACCORDANCE WITH AND MAINTAINING STRUCTURAL, FIRE AND SOUND RATINGS.

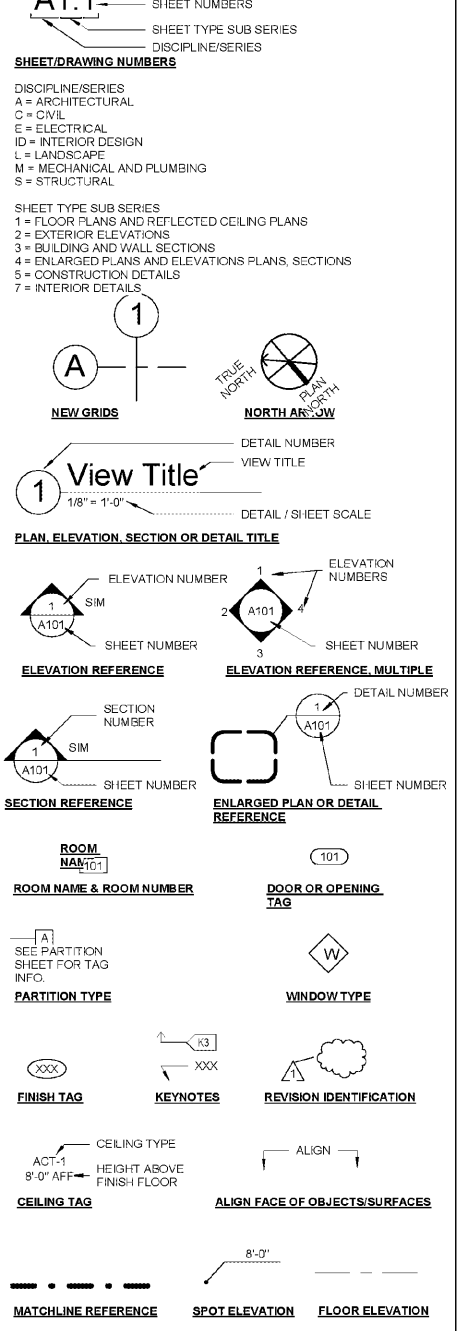


THE LOCATION OF ELECTRICAL SWITCHES, OUTLETS AND OTHER RECEPTACLE TYPES SHOWN ON THE PLANS AND DETAILS SHOULD BE ADJUSTED SO THAT NO TWO BOXES ARE BACK TO BACK. PLACE AS CLOSE AS POSSIBLE TO LOCATION SHOWN AND PROVIDE APPROPRIATE VERTICAL AND HORIZONTAL BLOCKING SO THAT EACH DEVICE IS ISOLATED WITHIN ITS OWN CAVITY.

REFER TO DETAIL 4/A8.4 FOR PUTTY PAD INFORMATION WHERE REQUIRED BY A1.1.

1 OUTLET IN SAME STUD WALL

DRAWING SYMBOL LEGEND



WOODSPRING SUITES
 CYPRESS CREEK, FLORIDA
 Pasco County
 Cypress Creek, FL

Proj. No.: 078761
 Date: 11/02/2018

Sheet Name:
GENERAL INFORMATION

G1.1