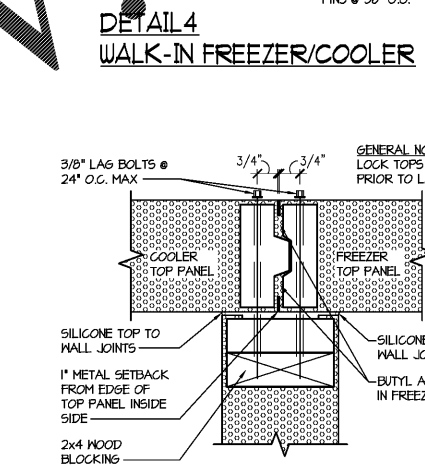
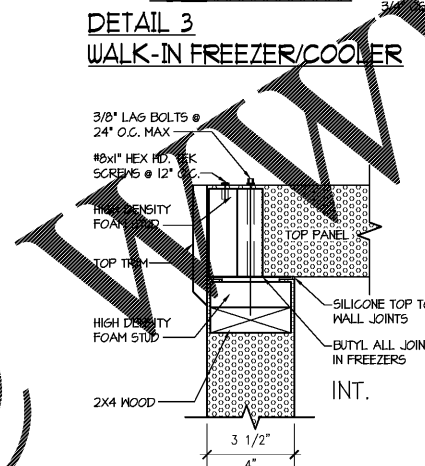
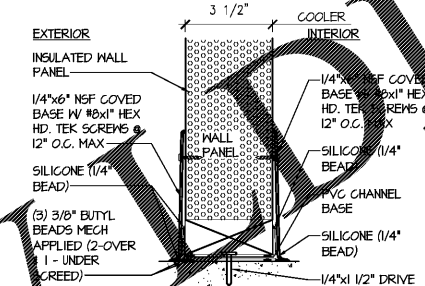
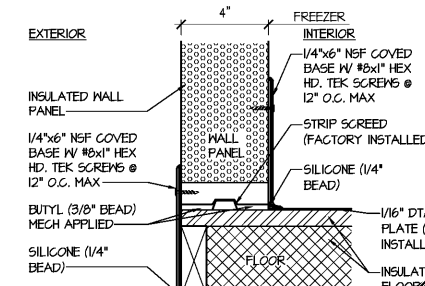
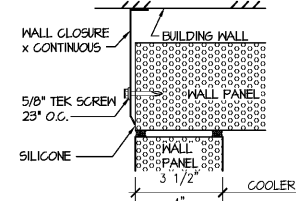
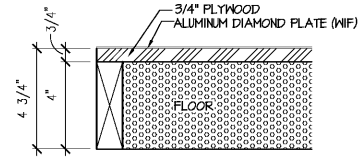
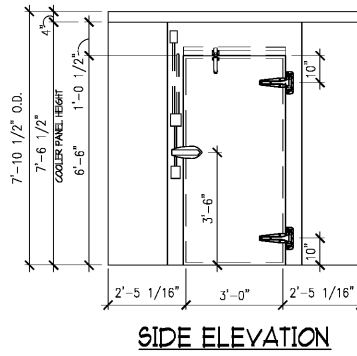
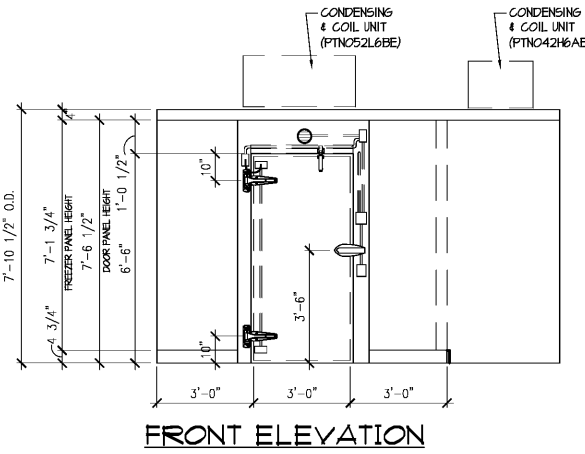
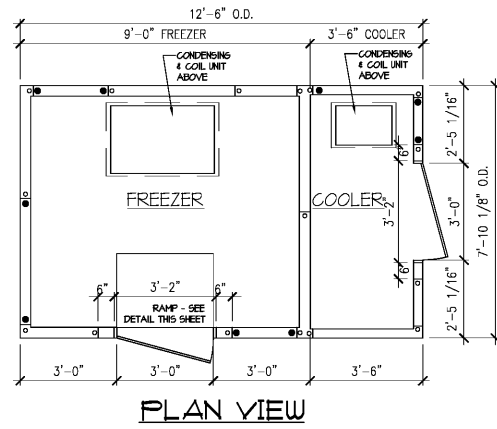


KPS GLOBAL PREFABRICATION
WALK-IN FREEZER/COOLER UNIT



SPECIFICATIONS

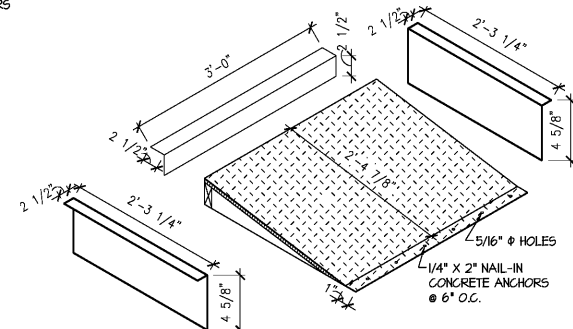
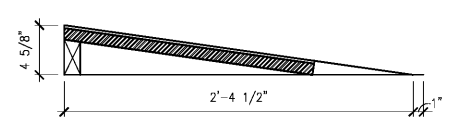
CONSTRUCTION: COOLER: WALLS: 3 1/2" FOAM-FRAME (T & G), POLYURETHANE F-I-P
TOPS: 4" FOAM-FRAME (T & G), POLYURETHANE F-I-P
FREEZER: WALLS: 4" FOAM-FRAME (T & G), POLYURETHANE F-I-P
TOPS: 4" FOAM-FRAME (T & G), POLYURETHANE F-I-P
FLOORS: 4" FOAM-FRAME (T & G), WITH ONE(1) LAYER OF 3/4" PLYWOOD INTERIOR FLOORS

FINISH: 266A STUCCO GALV. STEEL INTERIOR
2625 ALUMINUM DIAMOND PLATE INTERIOR FLOOR COVER
STUCCO ALUMINUM FINISH
266A STUCCO GALV. STEEL EXTERIOR FLOOR

ACCESSORIES: 1 EA. - 36" X 78" HINGED, INFIT, 4" THICK SELF-CLOSING FREEZER DOOR WITH HEATED FRAME (3 SIDES), HEATED SHEEP AND MAGNETIC GASKET (266A STUCCO GALV. STEEL INT. & EXT. K-TI W494 2-KI26) AND I-KI044) *18 GA. GALV. JAMB (4" NEM STYLE)
1 EA. - 36" X 78" HINGED, INFIT, 4" THICK SELF-CLOSING COOLER DOOR WITH HEATED FRAME (3 SIDES), HEATED SHEEP AND MAGNETIC GASKET (266A STUCCO GALV. STEEL INT. & EXT. K-TI W494 2-KI26) AND I-KI044) *18 GA. GALV. JAMB (3 1/2" NEM STYLE)
2 EA. - 44" X 80" PLASTIC CURTAINS
1 EA. - 18" LED LIGHT FIXTURE SUPPLIED BY ORIGIN RETAIL MODEL #LD-TL-B040-RX-40F (SHIP LOOSE)
1 EA. - 1/2" WIDE J BOX
4 EA. - 5/8" SMALL 2X4 J BOX
2 EA. - 1/2" WIDE PVC J BOX (F50C/F5240)
2 EA. - WEATHER-PROOF J BOX
1 EA. - HEATED AIR VENT (#1830)
1 EA. - OPENING FOR PRO 3 UNIT (PTN042H6AE)
1 EA. - OPENING FOR PRO 3 UNIT (PTN052L6BE)
1 EA. - INTERIOR RAMP (24 1/2" DEEP WITH 1 3/4" EXTENDED FRONT EDGE, I25 ALUMINUM DIAMOND PLATE, 040 SMOOTH ALUMINUM)
2 EA. - PRE-WIRED WEISS ALARM W/4 1/2 METER PROBE

NOTE: LAG DOWN TOP PANELS (PRE-DRILLED LAG HOLES) PVC SCREEN - COOLER
PRE-DRILLED HOLES ON FLOOR PLATING UL STICKER (FOAM FRAME)
2-WALL CLOSE OFFS

Dollar Tree Motor Data				
Model	PTN042H6		PTN052L6	
Type	Evap	Cond	Evap	Cond
Part#	28319501	28320501	28319501	28320501
Size	1/1.5HP	1/1.5HP	1/1.5HP	1/1.5HP
Qty	1	1	2	2



RAMP DETAIL WALK-IN FREEZER

RAMP SCHEDULE						
Q	INT. / EXT.	SIZE	FINISH	RAMP FINISH	DUE	REMARK
1	INT.	36" X 28 1/2" X 4 5/8" H.	050 SMOOTH ALUM.	I25 ALUMINUM DIAMOND PLATE	D/E	1 - 2 X 4 ADD.

GENERAL NOTES:
1. THE PROPOSED FREEZER/COOLER UNIT SIZE IS INDICATED ON FLOOR PLAN.
2. ALL WALK-IN & MERCHANDISING UNITS ARE SELF CONTAINED AND DO NOT REQUIRE A FLOOR DRAIN.
3. INSTALLATION OF THESE NSF, ETL & UL LISTED UNITS SHALL COMPLY WITH ALL STATE AND LOCAL CODES PER APPROVED PLANS.
4. MINIMUM DESIGN LOAD UNIFORMLY DISTRIBUTED: TOPS (PSF): 10
WALLS (PSF): 5
FLOORS (PSF): 1000
5. REFER TO SPECIFICATIONS

GENERAL NOTES:

- ALL WALK-INS ARE DESIGNED FOR INDOOR APPLICATION UNLESS NOTED OTHERWISE.
- PENETRATIONS AND SEALING OF PENETRATIONS - ARE THE RESPONSIBILITY OF OTHERS.
- PROVIDE 6" MINIMUM CLEARANCE AROUND WALK-IN WITH A MINIMUM AIR CIRCULATION OF 5 CFM FOR EVERY 100 SF OF PANEL SURFACE.
- PANEL LAYOUT MAY CHANGE BASED ON OPTIMAL MANUFACTURING STANDARDS.
- WALK-IN TOP IS NOT DESIGNED FOR STORAGE UNLESS NOTED OTHERWISE - TOPS ARE DESIGNED FOR 10 PSF UNIFORMLY DISTRIBUTED.
- QUARRY TILE OR CONCRETE FLOOR APPLICATIONS: METAL PANEL FACING MAY BE SUSCEPTIBLE TO STAINING DUE TO EXCESSIVE MOISTURE CREATED BY THE HYDRATION OF CONCRETE TYPE MATERIALS. IT IS ABSOLUTELY NECESSARY THAT EACH ROOM BE PROPERLY VENTILATED. SPECIAL PRECAUTIONS MUST ALSO BE TAKEN WHEN USING MURIATIC ACID DUE TO EFFECTS HYDROCHLORIC FUMES HAVE ON METAL MATERIALS.

- IF CONDENSING UNIT IS LOCATED IN THE INTERIOR OF BUILDING A MINIMUM OF 24" OF CLEARANCE IS REQUIRED AROUND TOP AND SIDES.
- FLOOR, CURB, AND FIT DETAILS ARE FOR GENERAL REFERENCE ONLY. THESE DRAWINGS SHOULD NOT BE USED OR INCORPORATED IN THE DESIGN OR PREPARATION OF THE INSULATED FLOOR, SUB-SLAB OR CURBS, WITHOUT HAVING THE DESIGN REVIEWED BY A QUALIFIED ENGINEER. ALL FOOTINGS, FOUNDATION WALLS AND CONCRETE WEAR SLABS ARE THE RESPONSIBILITY OF THE BUILDING ENGINEER OR ARCHITECT.
- THE FOAM PLASTIC USED IN THIS PRODUCT COMPLIES TO THE IBC SECTION 2603 AS FOLLOWS: FLAME SPREAD RATING: 15, SMOKE DEVELOPED RATINGS: 350 REFER TO INSTALLATION INSTRUCTIONS FOR ASSURING UNIT IS INSTALLED LEVEL AND PLUMB, DOOR OPENING ARE SQUARED, AND FOR LOCK-DOWN TOPS/FLOORS PANEL ASSEMBLY DIRECTIONS.
- ANY UNITS RUNNING AT 32 DEG. AND BELOW REQUIRE BUTYL AT ALL JOINTS - TOPS TO TOPS; WALLS TO WALLS; FLOORS TO FLOORS; WALLS TO TOPS; WALLS TO FLOORS - AS PANELS ARE ASSEMBLED. BUTYL MUST NOT BE EXPOSED.

LEIDIA Lighting Technology Co., Ltd.
1st-16th Floor, 17th-18th Floor, 19th-20th Floor, 21st-22nd Floor, 23rd-24th Floor, 25th-26th Floor, 27th-28th Floor, 29th-30th Floor, 31st-32nd Floor, 33rd-34th Floor, 35th-36th Floor, 37th-38th Floor, 39th-40th Floor, 41st-42nd Floor, 43rd-44th Floor, 45th-46th Floor, 47th-48th Floor, 49th-50th Floor, 51st-52nd Floor, 53rd-54th Floor, 55th-56th Floor, 57th-58th Floor, 59th-60th Floor, 61st-62nd Floor, 63rd-64th Floor, 65th-66th Floor, 67th-68th Floor, 69th-70th Floor, 71st-72nd Floor, 73rd-74th Floor, 75th-76th Floor, 77th-78th Floor, 79th-80th Floor, 81st-82nd Floor, 83rd-84th Floor, 85th-86th Floor, 87th-88th Floor, 89th-90th Floor, 91st-92nd Floor, 93rd-94th Floor, 95th-96th Floor, 97th-98th Floor, 99th-100th Floor.

Specification
LED Vapor Tight Light

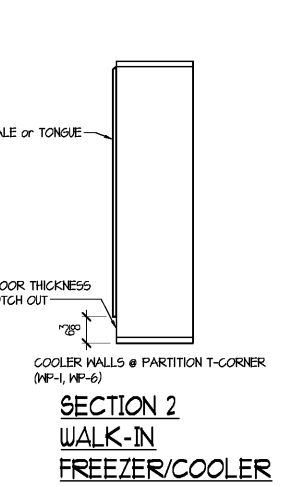
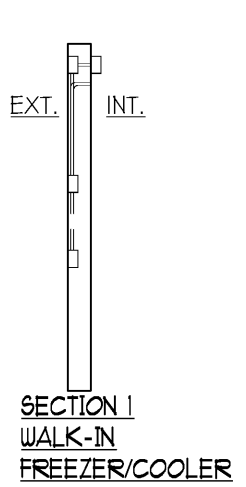
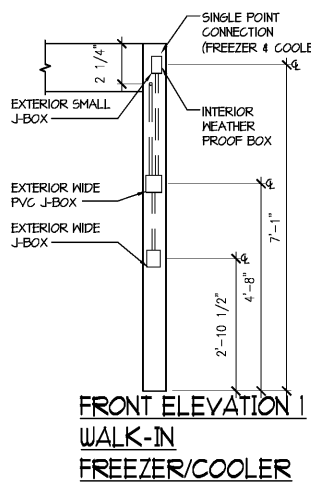
Item No.	Model
LD-TL-8024	LD-TL-8024
LD-TL-8030	LD-TL-8030
LD-TL-8036	LD-TL-8036
LD-TL-8050	LD-TL-8050
LD-TL-8060	LD-TL-8060

NOTES:
1. This specification is for regular product specifications.
2. The right of final interpretation of this specification to Guangzhou LEIDIA Lighting Technology Co., Ltd.

LEIDIA Lighting Technology Co., Ltd.
1st-16th Floor, 17th-18th Floor, 19th-20th Floor, 21st-22nd Floor, 23rd-24th Floor, 25th-26th Floor, 27th-28th Floor, 29th-30th Floor, 31st-32nd Floor, 33rd-34th Floor, 35th-36th Floor, 37th-38th Floor, 39th-40th Floor, 41st-42nd Floor, 43rd-44th Floor, 45th-46th Floor, 47th-48th Floor, 49th-50th Floor, 51st-52nd Floor, 53rd-54th Floor, 55th-56th Floor, 57th-58th Floor, 59th-60th Floor, 61st-62nd Floor, 63rd-64th Floor, 65th-66th Floor, 67th-68th Floor, 69th-70th Floor, 71st-72nd Floor, 73rd-74th Floor, 75th-76th Floor, 77th-78th Floor, 79th-80th Floor, 81st-82nd Floor, 83rd-84th Floor, 85th-86th Floor, 87th-88th Floor, 89th-90th Floor, 91st-92nd Floor, 93rd-94th Floor, 95th-96th Floor, 97th-98th Floor, 99th-100th Floor.

Specification

Model	Power	Beam Angle	Beam Diameter	Beam Length	Beam Diameter @ 10m	Beam Diameter @ 20m	Beam Diameter @ 30m	Beam Diameter @ 40m	Beam Diameter @ 50m
LD-TL-8024	10W	30°	100mm	1000mm	100mm	200mm	300mm	400mm	500mm
LD-TL-8030	15W	30°	100mm	1000mm	100mm	200mm	300mm	400mm	500mm
LD-TL-8036	20W	30°	100mm	1000mm	100mm	200mm	300mm	400mm	500mm
LD-TL-8050	30W	30°	100mm	1000mm	100mm	200mm	300mm	400mm	500mm
LD-TL-8060	40W	30°	100mm	1000mm	100mm	200mm	300mm	400mm	500mm



FOR INFORMATION ONLY

REFRIGERATION SPECIFICATIONS
WALK-IN DETAILS AND SPECIFICATIONS

D62

FOR REFERENCE ONLY