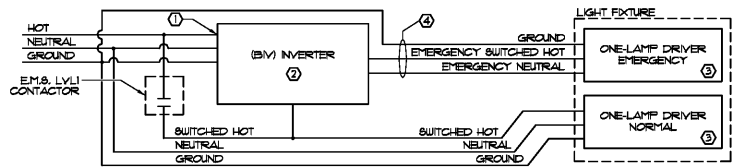


1 SCHEMATIC DIAGRAM: BATHROOM OCCUPANCY SENSOR
SCALE: NONE



- DUAL VOLTAGE RATED: CONNECT EITHER 120V OR 277V, NOT BOTH. SELECT PROPER VOLTAGE LEADS ON INPUT AND OUTPUT OF BIV.
- PROVIDED BY TENANT FOR INSTALLATION BY CONTRACTOR.
- THE NEUTRAL TO THE NORMAL LAMP AND THE NEUTRAL TO THE EMERGENCY LAMP MUST BE SEPARATE CONDUCTORS AND NOT CONNECTED TO EACH OTHER AT ANY POINT IN THE CIRCUIT, INCLUDING INSIDE THE FIXTURE.
- EMERGENCY CIRCUIT WIRING MUST BE INDEPENDENT OF NORMAL CIRCUIT WIRING PER NEC 700.10.

2 SCHEMATIC DIAGRAM: INVERTER WIRING (BIV)
SCALE: NONE

REFLECTED CEILING LEGEND

	4'-0" x 4'-0" ACOUSTICAL CEILING TILE AND GRID- SEE FINISH NOTE 4.
	GUB - PAINT WHITE UNLESS OTHERWISE NOTED.
	MIRROR PANEL
	DIFFUSER
	RETURN GRILLE
	DOVE
	VENTILATION FAN
	CEILING HEIGHT (ABOVE FINISH FLOOR)
	POLE POLE
	CEILING MOUNTED SECURITY CAMERA DOVE
	WALL MOUNTED SECURITY CAMERA DOVE, MOUNT @ 10'-0" AFF
	OCCUPANCY SENSOR (SEE NOTE 5)
	CEILING RECEPTACLE, 120V, 20A

ALL EXISTING ELECTRICAL EQUIPMENT/DEVICES, AND ASSOCIATED CONDUIT AND WIRING NOT SHOWN ON THIS PLAN OR IN ELECTRICAL RISER ON SHEET E-3 SHALL BE REMOVED COMPLETE.

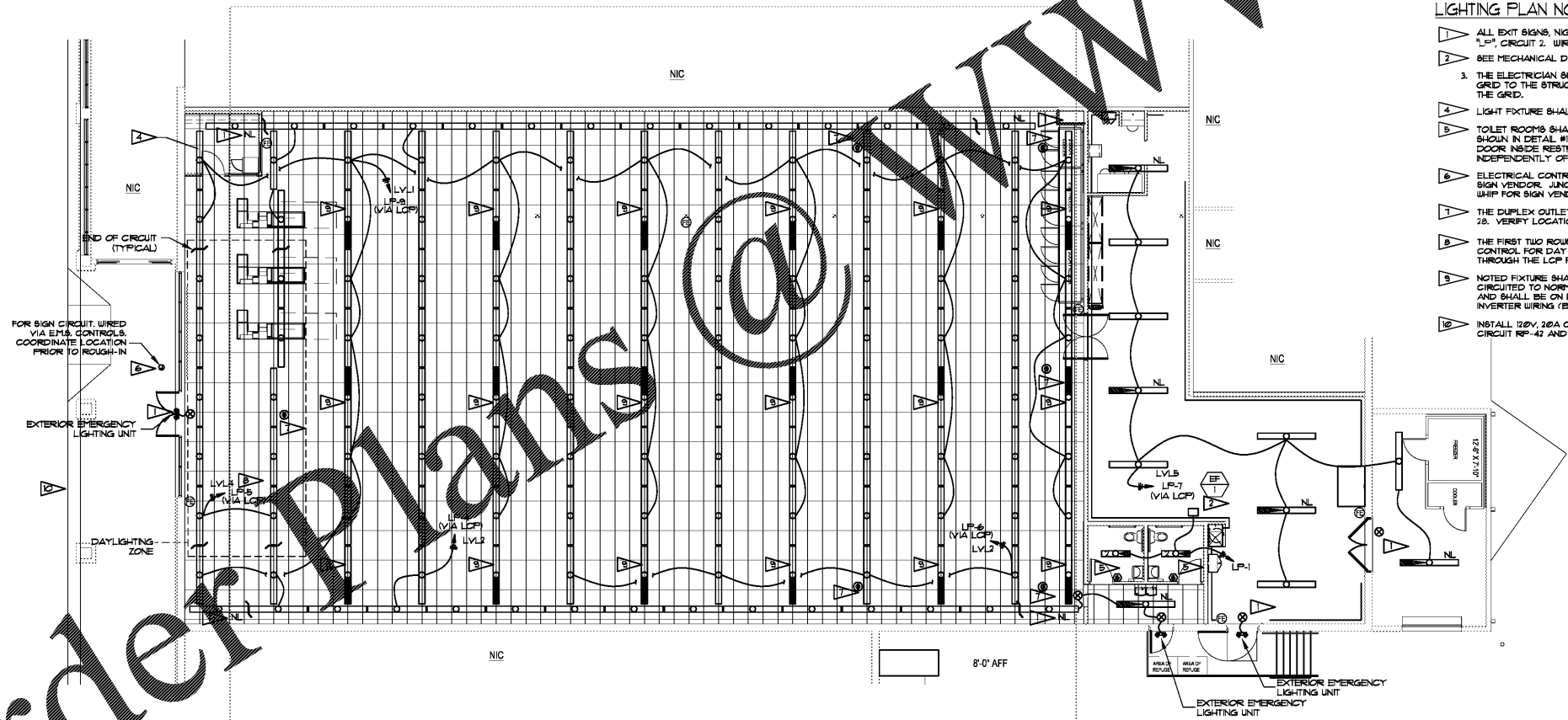
ANY NEW LIGHTING WILL BE PROVIDED BY TENANT FOR TENANT'S CONTRACTOR INSTALLATION.

LIGHT FIXTURE SCHEDULE

FIXT. SYM	LIGHT DESCRIPTION	VOLTS	LAMP QTY, WATTS, TYPE	LAMPS	MOUNTING	SCHEDULE NOTES
	EMERGENCY LIGHT (EXTERIOR)	SEE ELEC. PANEL	2 (2) 1 WATT LED		WALL OVER EXTERIOR DOOR	EMERGENCY LIGHT WITH REMOTE BATTERY
	EMERGENCY LIGHT (INTERIOR)	SEE ELEC. PANEL	2 (2) 1 WATT LED		SURFACE	EMERGENCY LIGHT UNIT
	EXIT LIGHT	SEE ELEC. PANEL	5 FURNISHED WITH FIXTURE		CEILING UNLESS OTHERWISE REQUIRED BY CODE	LED SINGLE EXIT SIGN WITH BATTERY BACKUP
	8'-0" STRIP LIGHT	SEE ELEC. PANEL	36 (2) 18W LED		FURNISHED WITH FIXTURE	INVERTER SYSTEM NOTES: A, C, D, F, G
	8'-0" STRIP LIGHT (EMERGENCY LIGHT)	SEE ELEC. PANEL	36 (2) 18W LED		FURNISHED WITH FIXTURE	EMERGENCY LIGHT WITH INTEGRAL BATTERY PACK. NOTES: A, C, D, F, G
	8'-0" STRIP LIGHT (EMERGENCY LIGHT)	SEE ELEC. PANEL	36 (2) 18W LED		FURNISHED WITH FIXTURE	EMERGENCY LIGHT WITH INTEGRAL BATTERY PACK. NOTES: A, C, D, F, G
	4'-0" STRIP LIGHT	SEE ELEC. PANEL	18 18W LED		FURNISHED WITH FIXTURE	INTERIOR/EXTERIOR STRIP LIGHT. NOTES: A, C, D, F, G
	4'-0" STRIP LIGHT (EMERGENCY LIGHT)	SEE ELEC. PANEL	36 (2) 18W LED		FURNISHED WITH FIXTURE	EMERGENCY LIGHT WITH INTEGRAL BATTERY PACK. NOTES: A, C, D, F, G

DESIGNATED FIXTURES SHALL HAVE LEADERS CUT INSULATION (WHEN TYPE IS LEAD) OR PROVIDE SHIELD AROUND FIXTURE (WHEN BLOW-IN TYPE IS USED) TO KEEP INSULATION MINIMUM OF 3" AWAY FROM FIXTURE.
 C. EACH FIXTURE TO T-BAR SHALL BE SEC 42D-30.
 D. WIRE PROVIDED WITH VOLTAGE 120/277V POWER SUPPLY. VERIFY VOLTAGE FOR EACH FIXTURE LOCATION.
 E. EXISTING FIXTURE WIRING FROM INVERTER.
 F. LIGHT FIXTURES DENOTED BY "NL" SHALL REMAIN ON DURING NON-BUSINESS WORKING HOURS.
 G. WITH NORMAL LIGHTING, LIGHT FIXTURES ABOVE THE SALES FLOOR SHALL BE SUSPENDED @ 12'-0" A.F.F. AND LIGHT FIXTURES ABOVE THE STOCK FLOOR SHALL BE SUSPENDED @ 10'-0" A.F.F.
 H. FOR EXISTING FIXTURES THAT ARE TO REMAIN, THE CONTRACTOR SHALL REPLACE ALL EXISTING LAMPS WITH NEW LAMPS PROVIDED BY CONTRACTOR.

- ### LIGHTING PLAN NOTES:
- ALL EXIT SIGNS, NIGHT LIGHTS, AND EXTERIOR EMERGENCY LIGHTS ARE ON PANEL 1, CIRCUIT 2. WIRING NOT SHOWN FOR DRAWING CLARITY.
 - SEE MECHANICAL DRAWINGS FOR EXACT LOCATION OF EXHAUST FAN.
 - THE ELECTRICIAN SHALL INSTALL ADDITIONAL WIRE TE SUPPORTS FROM THE CEILING GRID TO THE STRUCTURE ABOVE FOR SUPPORT OF THE LIGHT FIXTURES CLIPPED ON THE GRID.
 - LIGHT FIXTURE SHALL BE ON "EMPLOYEE" LIGHTING CONTACTOR (LVL 8).
 - TOILET ROOMS SHALL HAVE OCCUPANCY SENSORS INSTALLED AND CONNECTED AS SHOWN IN DETAIL #1 - SCHEMATIC DIAGRAM, THIS SHEET. MOUNT ON WALL NEXT TO DOOR INSIDE RESTROOM. LIGHTS AND OCCUPANCY SENSORS TO BE WIRED INDEPENDENTLY OF THE ENERGY MANAGEMENT SYSTEM VIA CIRCUIT LP-1.
 - ELECTRICAL CONTRACTOR SHALL COORDINATE FINAL JUNCTION BOX LOCATION WITH SIGN VENDOR. JUNCTION BOX NEEDS TO BE WITHIN FIVE FEET OF SIGN AND INCLUDE 6" WHIP FOR SIGN VENDOR TO MAKE FINAL CONNECTION. CIRCUIT FOR SIGN IS RP-40.
 - THE DUPLEX OUTLET TO BE MOUNTED IN CEILING AND WIRED TO PANEL "RP", CIRCUIT 28. VERIFY LOCATION PRIOR TO INSTALLATION.
 - THE FIRST TWO ROWS OF LIGHT FIXTURES WILL BE PROVIDED WITH INDEPENDENT CONTROL FOR DAY-LIGHTING PER IECC. THESE CIRCUITS SHALL BE ROUTED THROUGH THE LCP FOR DAY-LIGHTING CONTROL.
 - NOTED FIXTURE SHALL HAVE ONE LAMP CIRCUITED TO INVERTER AND ONE LAMP CIRCUITED TO NORMAL POWER. CIRCUIT LP-3 SHALL BE USED FOR THESE FIXTURES AND SHALL BE ON LEVEL 1 CONTACTOR OF THE ENERGY MANAGEMENT SYSTEM. SEE INVERTER WIRING (BIV) DIAGRAM ON THIS SHEET.
 - INSTALL 120V, 20A CIRCUIT TO Pylon SIGN IN PARKING LOT ON SITE. FEED FROM CIRCUIT RP-42 AND ROUTE THROUGH E.M.S. (LVL3) FOR CONTROL.



LIGHTING PLAN
SCALE: 1/8"=1'-0"
NORTH

Order Plans

851 Industrial Blvd
Tomball, TX 77388
Office: 832.454.9840

2805 Elm Hill Pkwy S/C
Memphis, TN 37214
Office: 615.676.6022

Oliver • Little
AOLIS
Engineering, Inc.

12/10/18
11/27/18
DWB
DWB
ADG

date project designed drawn checked

RRMM ARCHITECTS, P.C.
Robert S Berz, Jr, Architect
Duane M Harver, Architect

1317 Executive Blvd, Suite 200
Chesapeake, VA 23320
(757) 622-2828 / fax (757) 622-6885

DOLLAR TREE
FORMER HARVEY'S
FORT VALLEY, GEORGIA
LIGHTING PLAN

project drawing

sheet
E-2