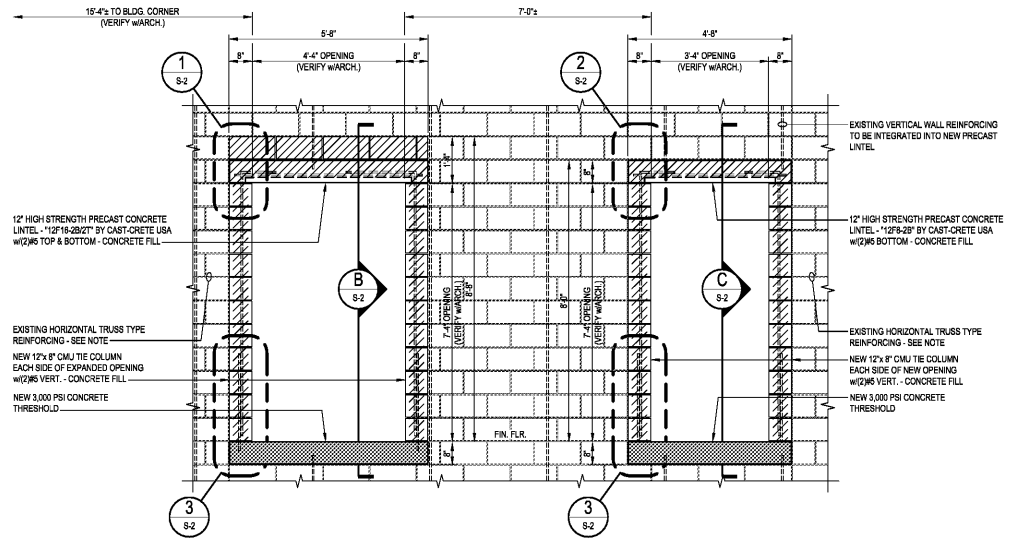


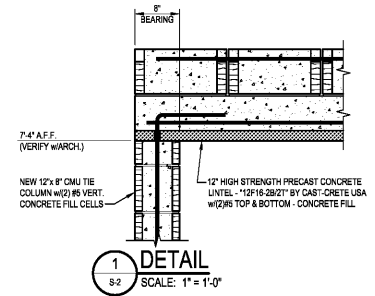
# Order Plans



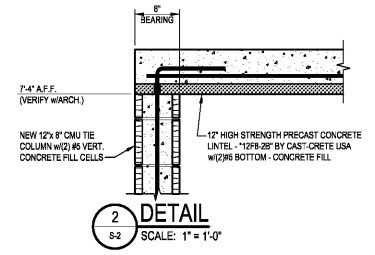
**ELEVATION No.2 - NEW AND EXPANDED OPENINGS  
IN EAST (SIDE) 12\"/>**

SCALE: 1/2\"/>

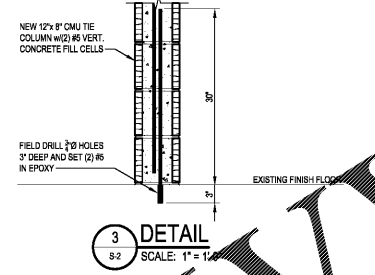
NOTE: DURING DEMOLITION PHASE CONTRACTOR SHALL PRESERVE 6\"/>



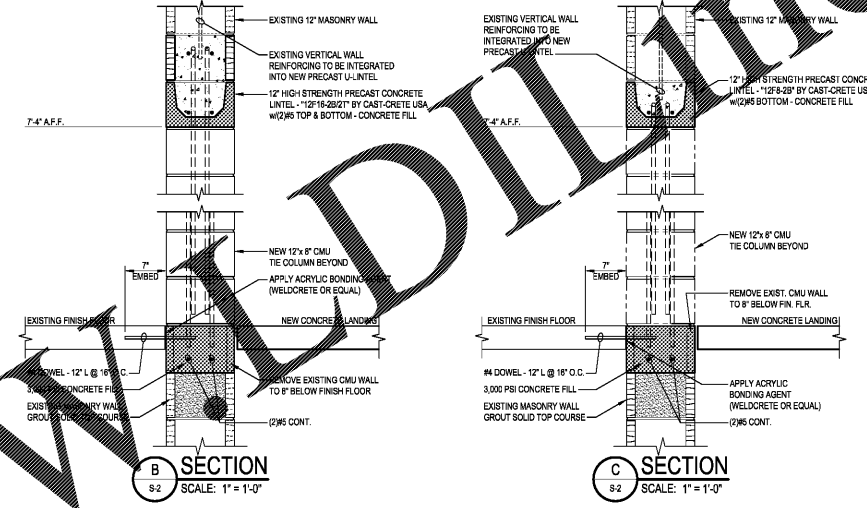
**1 DETAIL**  
SCALE: 1\"/>



**2 DETAIL**  
SCALE: 1\"/>

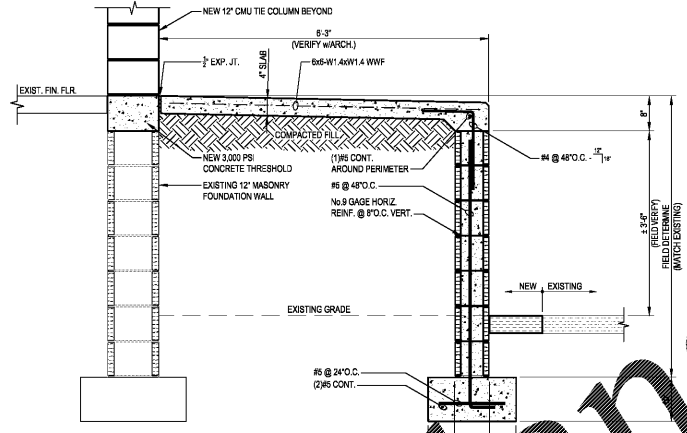


**3 DETAIL**  
SCALE: 1\"/>

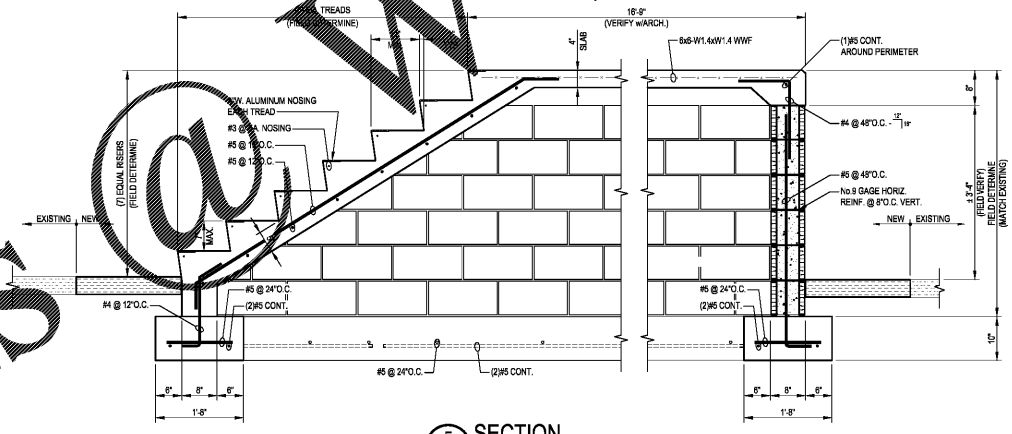


**B SECTION**  
SCALE: 1\"/>

**C SECTION**  
SCALE: 1\"/>



**D SECTION**  
SCALE: 3/4\"/>



**E SECTION**  
SCALE: 3/4\"/>

**THOMAS E. LATTIAM**  
ARCHITECTS  
ENGINEERS  
1317 EXECUTIVE BLVD., SUITE 200  
CHESAPEAKE, VA 23320  
(757) 522-2528 FAX (757) 522-6885

date	project	designed	drawn	checked
12/27/2018	1825046	TBC / DM	JEH	

date	project	designed	drawn	checked
12/27/2018	1825046	TBC / DM	JEH	



**RRMM ARCHITECTS, PC**  
Robert S Berz, Jr, Architect  
Duane M Harver, Architect

1317 Executive Blvd., Suite 200  
Chesapeake, VA 23320  
(757) 522-2528 / Fax (757) 522-6885



**DOLLAR TREES**  
FORMER HARVEY'S  
FORT VALLEY, GEORGIA  
STRUCTURAL SECTIONS AND DETAILS