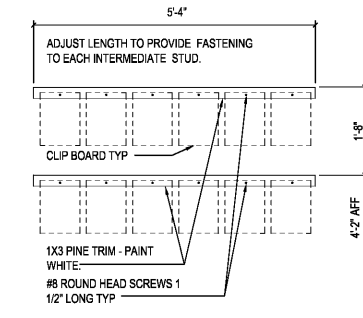
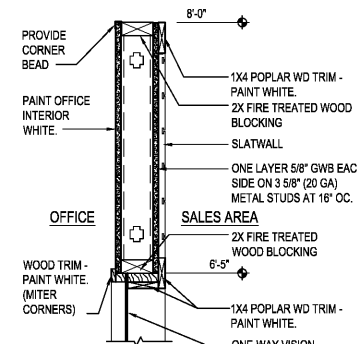


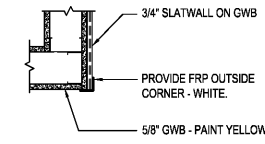
1 ENLARGED OFFICE PLAN
A1.2 SCALE: 3/8" = 1'-0"



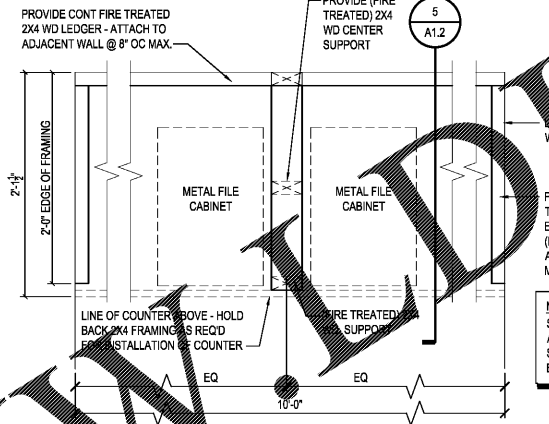
A CLIP BOARD RACK ELEVATION
A1.2 SCALE: 3/4" = 1'-0"



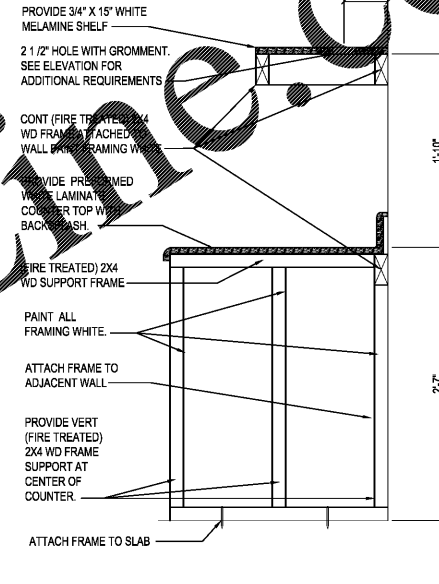
2 HEAD / JAMB DETAIL
A1.2 SCALE: 1 1/2" = 1'-0"



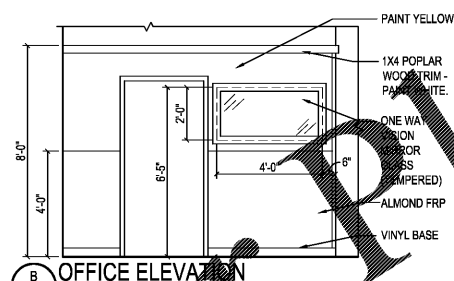
3 DETAIL
A1.2 SCALE: 1 1/2" = 1'-0"



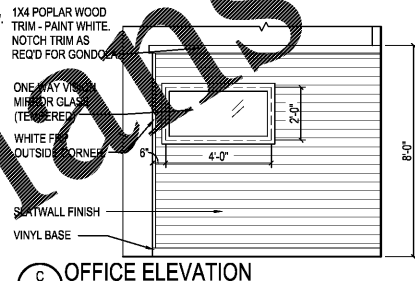
4 DETAIL
A1.2 SCALE: 1 1/2" = 1'-0"



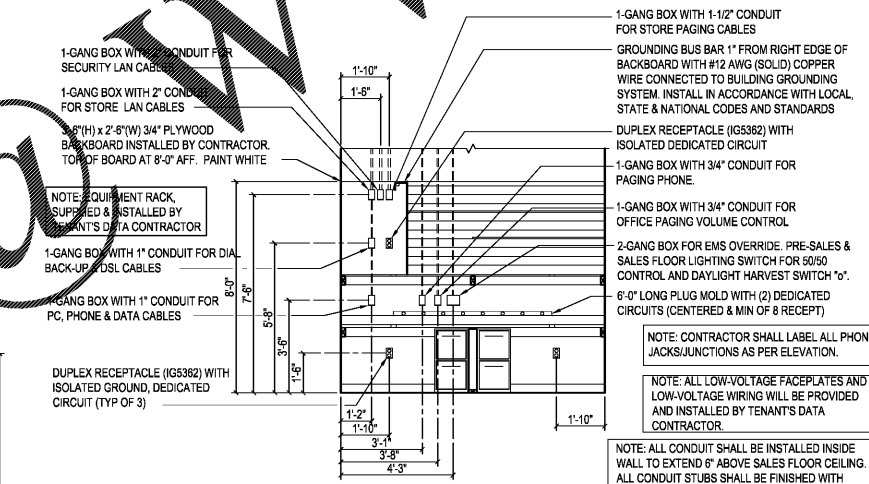
5 SECTION
A1.2 SCALE: 1 1/2" = 1'-0"



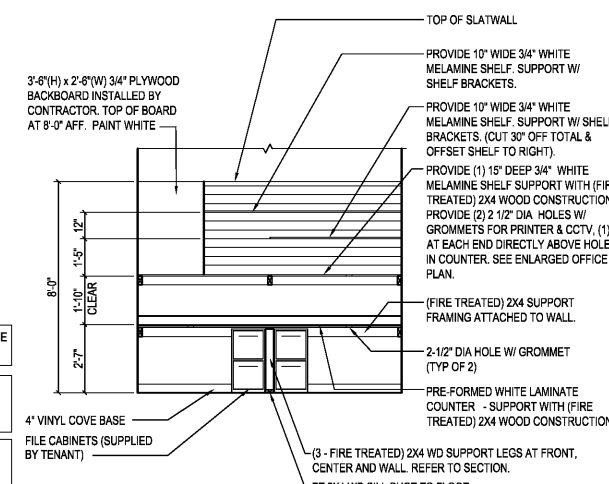
B OFFICE ELEVATION
A1.2 SCALE: 3/8" = 1'-0"



C OFFICE ELEVATION
A1.2 SCALE: 3/8" = 1'-0"



D OFFICE ELEVATION
A1.2 SCALE: 3/8" = 1'-0"



FINISHES, SHELVING AND CONSTRUCTION

description	
by	
date	
mark	revisions
10/10/2018	
10/26/18	RWH
10/26/18	RWH
10/26/18	DWH
date	project
designed	drawn
checked	
RRMM ARCHITECTS, PC Robert S Berz, Jr., Architect Duane M Harver, Architect 1317 Executive Blvd, Suite 200 Chesapeake, VA 23320 (757) 622-2828 / fax (757) 622-6883	
FORMER HARVEYS FORT VALLEY, GEORGIA ENLARGED PLAN, DETAILS, SECTIONS AND ELEVATIONS	
project	drawing
sheet	
A1.2	

Order Plans