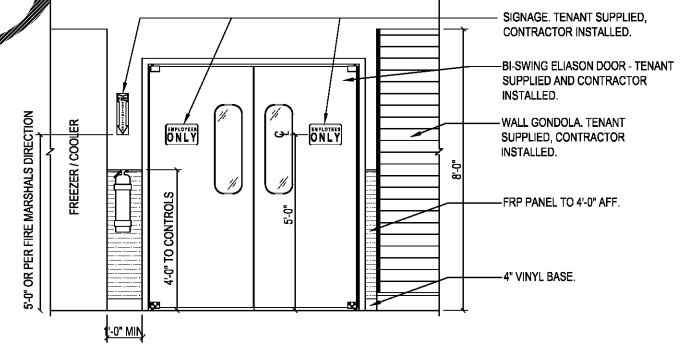
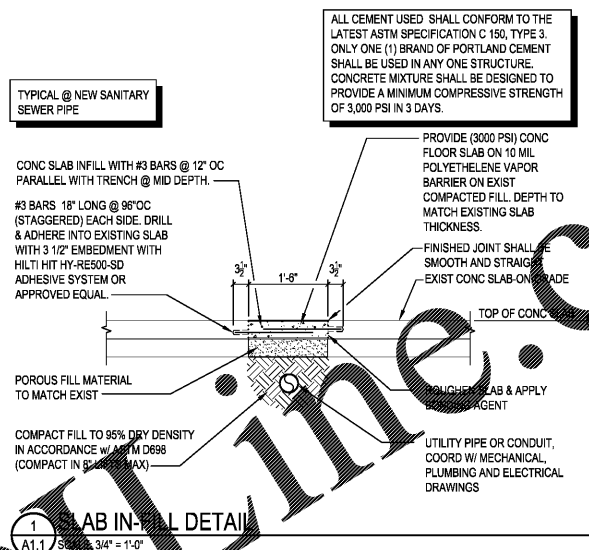


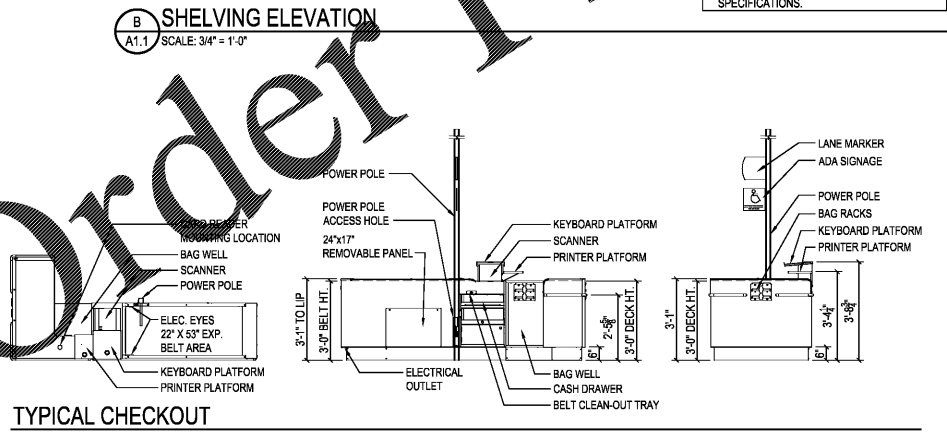
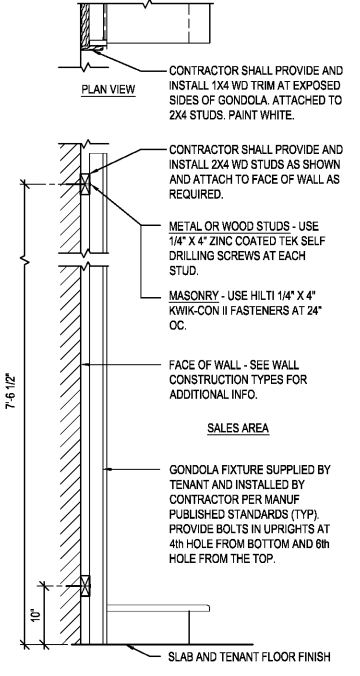
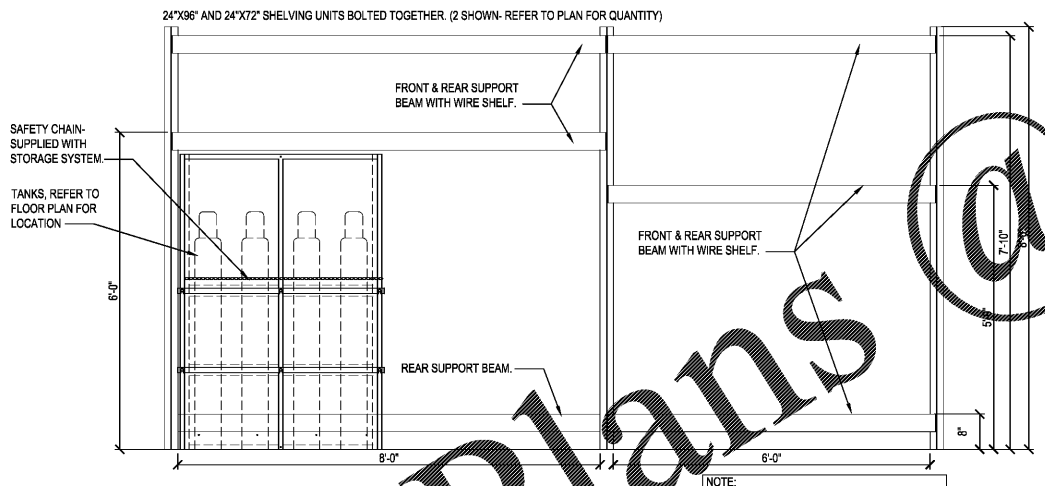
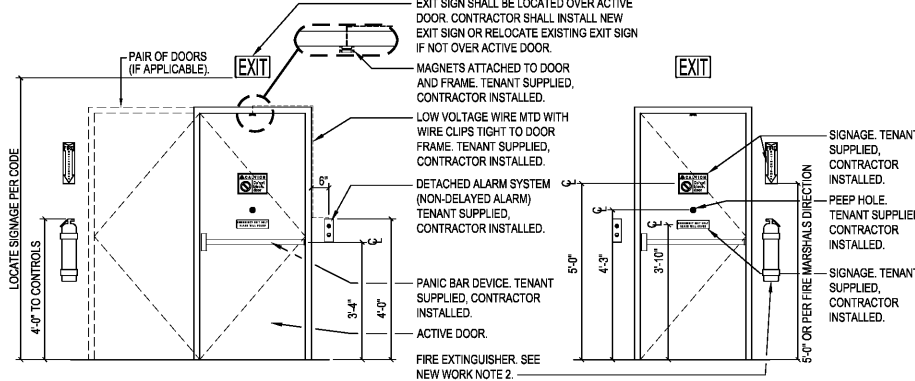
FIXTURE / EGRESS PLAN
SCALE: 1/8" = 1'-0"

- NOTES:**
- NO GONDOLA UNITS, FIXTURES, OR PALLETS SHALL BE OVER 8'-0" AFF.
 - FIXTURE PLAN IS FOR REFERENCE ONLY. CONTRACTOR SHALL CONTACT DOLLAR TREE FOR FINAL APPROVED LAYOUT.
 - MAXIMUM TRAVEL DISTANCE SHALL BE 250'-0". ACTUAL TRAVEL DISTANCE AS SHOWN: ()
 - CHECKOUTS ARE NOT ATTACHED TO FLOOR.

- NOTE: OVERLAP 6" MIN AT SEAM ENDS**
- BACK FREEZER / COOLER
 - SEE WALL CONSTRUCTION TYPE
 - CONT. FIRE CAULK
 - 5 1/2" DIA. (8 GA) GALV STEEL ANGLE
 - #12 TEK SCREWS @ 32" OC
 - CONTINUOUS LIQUID NAIL TO FLOOR
 - CONT FIRE CAULK
 - TENANT'S FLOOR FINISH



2 DETAIL
SCALE: 3" = 1'-0"



- NOTE:**
- CHECKOUTS AND POWER POLES ARE TENANT SUPPLIED / CONTRACTOR INSTALLED.
 - CHECKOUT AISLES SHALL COMPLY WITH 2012 INTERNATIONAL BUILDING W/ 2014 GA AMENDMENTS CODE SECTION 1108.12.2 (PROVIDE 2 when 5 or more)
 - PROVIDE SIGN DISPLAYING THE INTERNATIONAL SYMBOL OF ACCESSIBILITY IN BLUE AND WHITE ABOVE EACH CHECKOUT AISLE IN THE SAME LOCATION AS THE CHECKOUT NUMBER OR TYPE OF CHECKOUT IDENTIFICATION.

3 COLUMN DETAIL
SCALE: 1/2" = 1'-0"

4 SHOPPING CART BUMPER DETAIL
SCALE: 1/2" = 1'-0"

RRMM ARCHITECTS, P.C.
Robert S. Berz, Jr., Architect
Duane M. Harver, Architect
1317 Executive Blvd., Suite 200
Chesapeake, VA 23320
(757) 622-2828 / fax (757) 622-6883

DOLLAR TREE FORMER HARVEYS
FORT VALLEY, GEORGIA
FIXTURE / EGRESS PLAN, DETAILS, SECTIONS AND ELEVATIONS

date	project	designed	drawn	checked	mark	revisions	description
10/01/2018	1026-04	RWH	RWH	DMH			

sheet **A1.1**