

- NOTES**  
(THIS SHEET ONLY)
- ① DISCONNECT EXISTING CIRCUIT ASSOCIATED WITH EXISTING EXHAUST FAN. RECONNECT EXISTING CIRCUIT TO NEW EXHAUST FAN.
  - ② INTERCEPT EXISTING UNIT CIRCUIT BELOW ROOF. PROVIDE JUNCTION BOX BELOW ROOF AND PROVIDE NEW CIRCUITING UP THROUGH ROOF WALK IN PROD. STEEL CONDUIT, THEN FLEXIBLE CONDUIT TO NEW FUSIBLE DISCONNECT SWITCH. EXTEND AND RECONNECT EXISTING CIRCUITING.
  - ③ NEW CIRCUITING SHALL PENETRATE ROOF THROUGH NEW CURB AND WALK.
  - ④ REFER TO MECHANICAL DRAWINGS FOR DEMOLITION IN THIS AREA.



COPYRIGHT OWNERSHIP  
This drawing is the property of Foreman Seelye Fountain Architecture and may not be copied, copied or revised without expressed written permission.  
© 2018

Revisions:

No.	Description

**HVAC AND ROOFING RENOVATIONS FOR  
BRITT ELEMENTARY SCHOOL**

2503 SKYLAND DRIVE SW  
SNELLVILLE, GEORGIA 30078

Facility Code  
# 3050

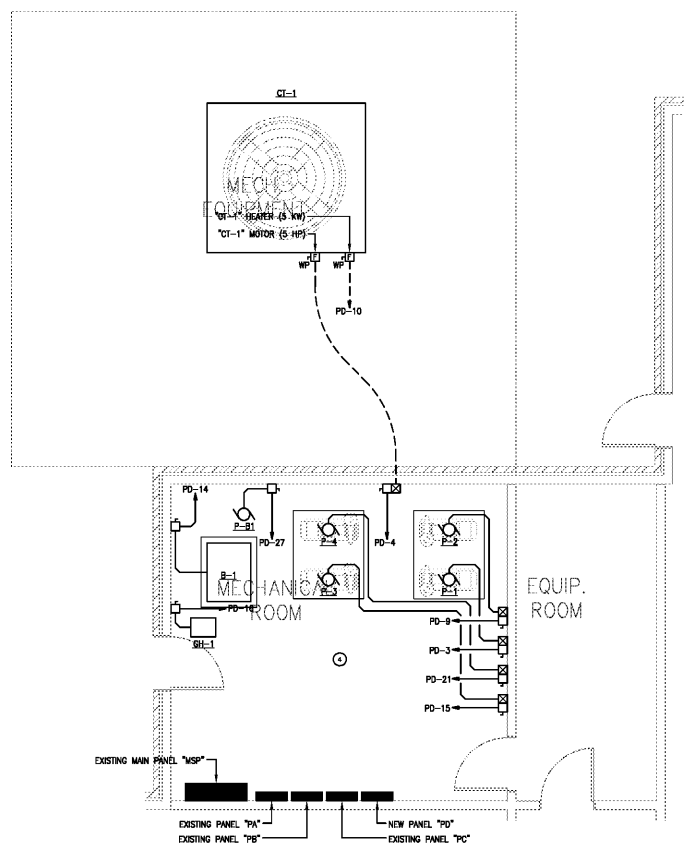
FOREMAN | SEELEY | FOUNTAIN  
architects

3001 Courtyard Lane Drive, Suite 150, Peachtree Corners, Georgia, 30071  
(770) 729-8433  
www.FSFArchitects.com

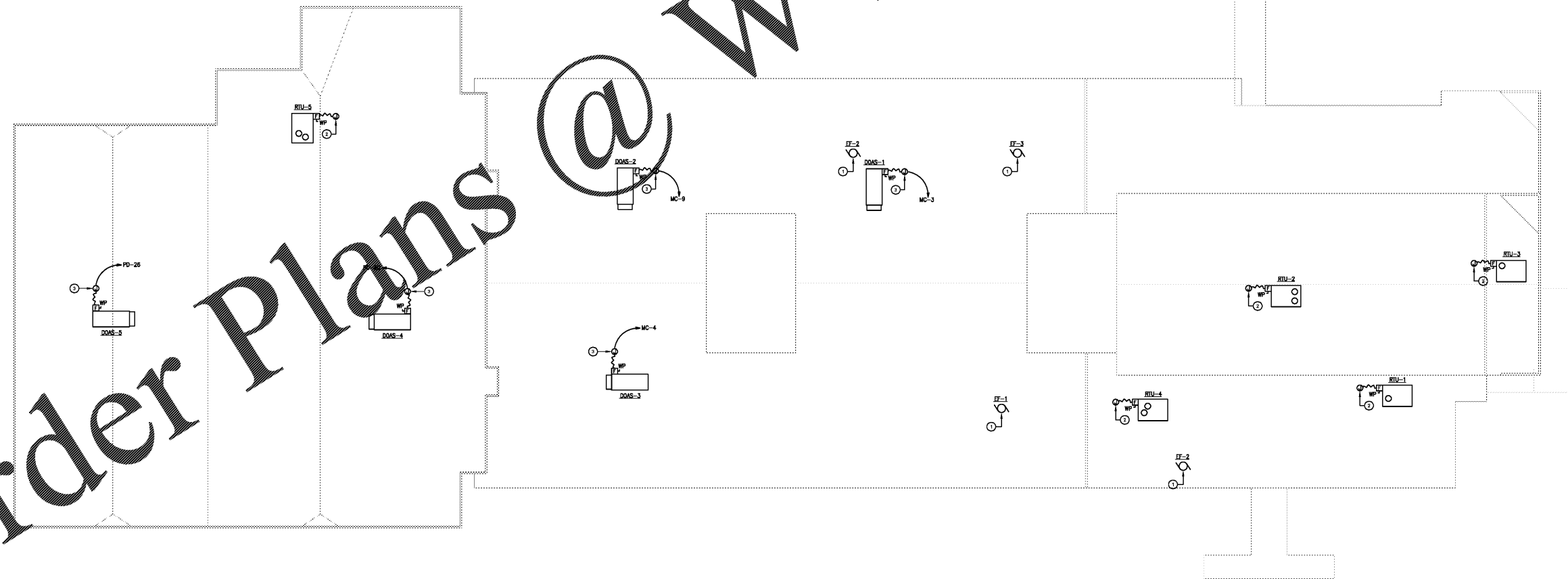
Sheet Title:  
**ELECTRICAL ROOF PLAN  
POWER**

Drawn By: Z.S.G.  
Scale: AS NOTED  
Date: 12/14/2018  
Job No.: 1810  
Sheet No.:

**E4.3**



**2 ELECTRICAL PARTIAL FLOOR PLAN**  
SCALE: 1/4"=1'-0"



**1 ELECTRICAL ROOF PLAN - POWER**  
SCALE: 1/16"=1'-0"

FOR PRICING

Order Plans @

WWW.LDILine.com