

GENERAL NOTES
(THIS SHEET ONLY)

1. REMOVE, STORE, AND REINSTALL ALL EXISTING LIGHT FIXTURES AND CEILING MOUNTED EXIT SIGNS, WIRING DEVICES IN HALLWAY CEILING GRID. EXTEND AND RECONNECT ALL EXISTING CIRCUITING.
2. REMOVE ALL LOW-VOLTAGE SYSTEMS FROM CORRIDOR CEILING GRID AND RE-INSTALL. VERIFY ALL DEVICES PRIOR TO BID.



COPYRIGHT OWNERSHIP
This drawing is the property of Foreman Seeley Fountain Architecture and may not be copied or reused without expressed written permission.
© 2018

Revisions:

No.	Description

**HVAC AND ROOFING RENOVATIONS FOR
BRITT ELEMENTARY SCHOOL**

2503 SKYLAND DRIVE SW
SNELLVILLE, GEORGIA 30078

Facility Code
3050

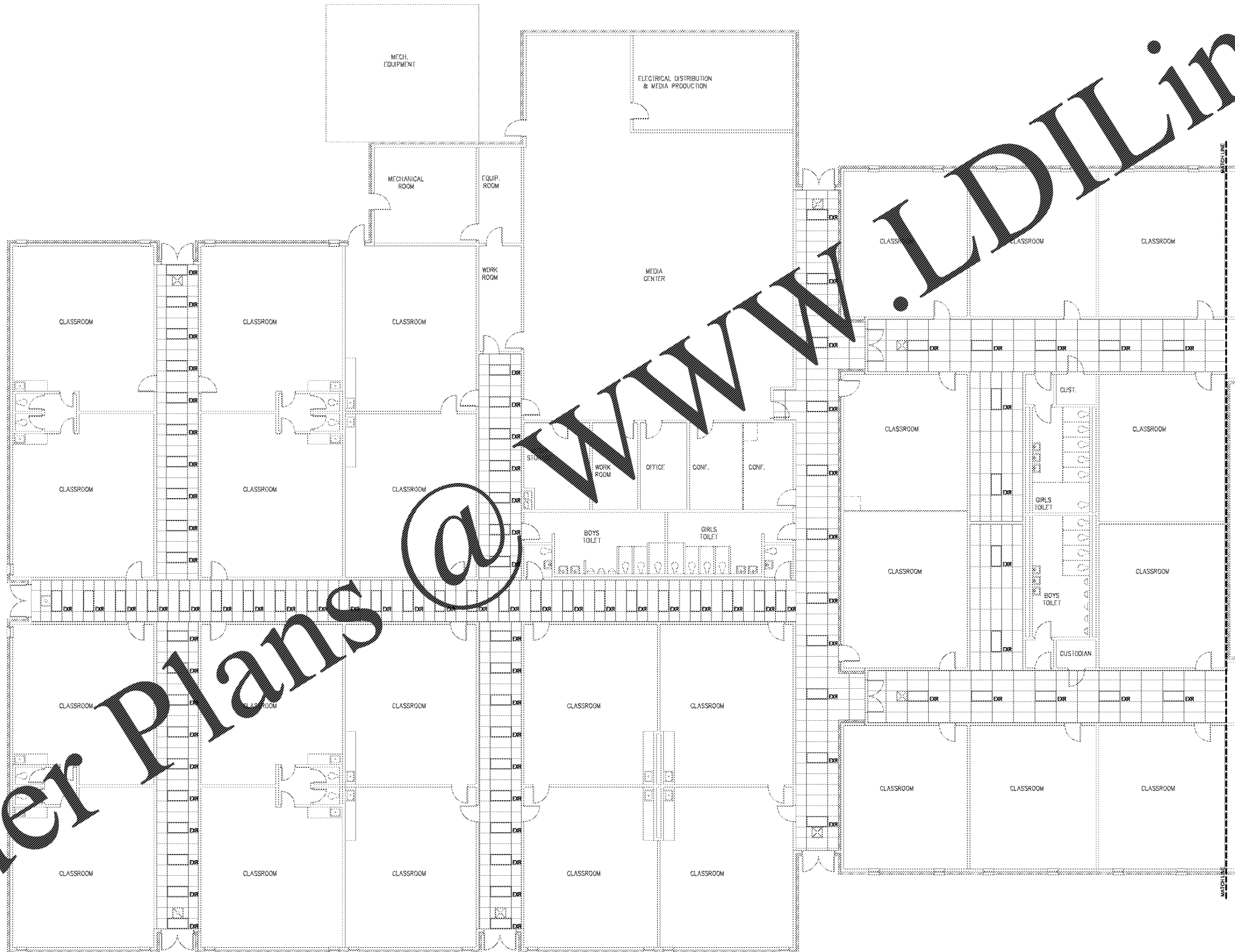
FOREMAN SEELEY FOUNTAIN
architecture

3001 Courtyard Lane Drive, Suite 150, Peachtree Corners, Georgia, 30071
(770) 729-8433
www.FSFarchitecture.com

Sheet Title:
ELECTRICAL FLOOR PLAN LIGHTING

Drawn By: Z.S.G.
Scale: AS NOTED
Date: 12/14/2018
Job No.: 1810
Sheet No.:

E3.1



1 ELECTRICAL PARTIAL FLOOR PLAN - LIGHTING
SCALE: 1/8"=1'-0"

FOR PRICING

Order Plans @

WWW.LDILine.com