

**GENERAL NOTES**

1. SEE SHEET M0.1 FOR HVAC NOTES.

**KEY NOTES**

- ① EXTEND INDIVIDUAL TEMPERED WATER RUNOUTS TO EACH WSHIP WITH NEW FLEXIBLE HOSE KIT. SEE SCHEDULE FOR SIZING.
- ② PROVIDE COPPER CONDENSATE DRAINS FOR REPLACEMENT WSHIPS LOCATED ABOVE THE CEILING. INSULATE ALL NEW CONDENSATE PIPING AND ANY SECTIONS DAMAGED WITH ELASTOMETRIC TYPE. ROUTE PIPING AS HIGH AS POSSIBLE FROM CONNECTION WITH HEAT PUMPS.
- ③ NEW 4" TEMPERED WATER MAIN FROM MECHANICAL ROOM TO SERVE ORIGINAL BUILDING. SEE DETAIL 3/M3.1 FOR CONTINUATION.
- ④ ROUTE NEW 4" PIPING ABOVE MEDIA CENTER CEILING.
- ⑤ REPLACE APPROXIMATELY 120' OF EXISTING REVERSE RETURN PIPING FROM WITH NEW 4" MAIN. MAKE CONNECTIONS FOR REPLACEMENT WSHIPS. SEE SHEET M2.4 FOR CONTINUATION.



COPYRIGHT OWNERSHIP  
This drawing is the property of Foreman Seeley Fountain Architecture and may not be used, copied or revised without expressed written permission.  
© 2018

Revisions:


**HVAC AND ROOFING RENOVATIONS FOR  
BRITT ELEMENTARY SCHOOL**

2503 SKYLAND DRIVE SW  
SNELLVILLE, GEORGIA 30078

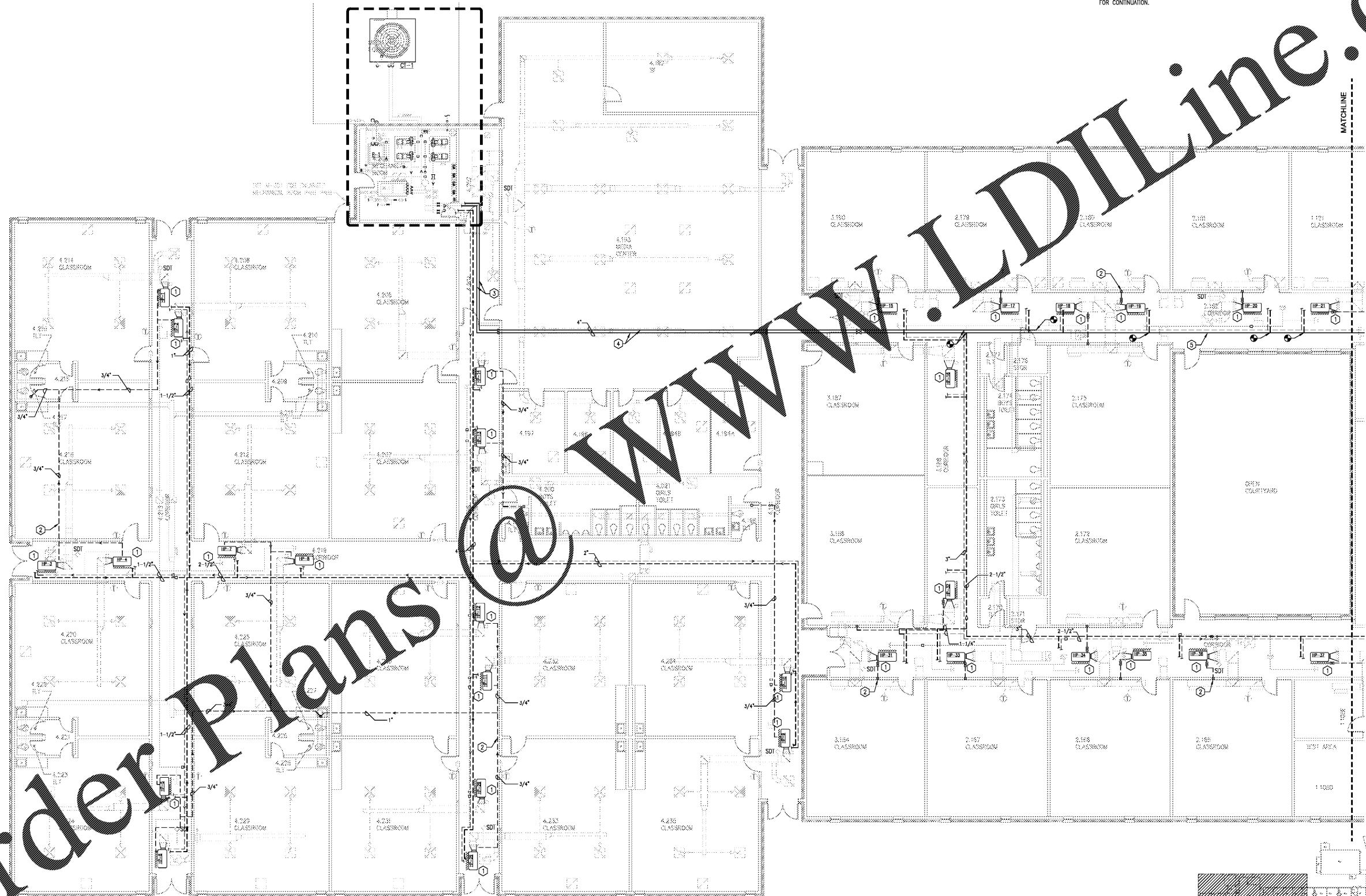
Facility Code  
# 3050

FOREMAN | SEELEY | FOUNTAIN  
architecture

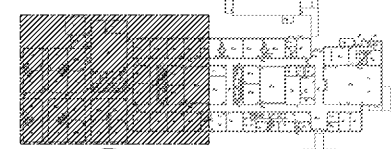
3801 GARDNER LANE DRIVE, SUITE 150, SNELLVILLE, GEORGIA 30078  
(770) 724-4433 | www.seeleyfountain.com | (770) 724-4466

Sheet Title:  
CLASSROOM BUILDING SOUTH - HVAC PIPING  
NEW WORK PART PLAN

Drawn By: GBP  
Scale: AS NOTED  
Date: 12/14/2018  
Job No.: 18JS97  
Sheet No.:  
**M2.3**



**1 CLASSROOM BUILDING SOUTH - HVAC PIPING NEW WORK PART PLAN**  
M2.1 SCALE: 1/8" = 1'-0"



FOR PRICING

Order Plans @

WWW.LDILine.com