

GENERAL NOTES

1. SEE SHEET M0.1 FOR HVAC NOTES.

KEY NOTES

- ① REPLACE ALL EXISTING HORIZONTAL WATER SOURCE HEAT PUMPS. CONNECT NEW W/HP TO EXISTING SUPPLY AIR DUCTWORK. PROVIDE NEW BAS ROOM SENSOR, CONTROLS VALVES, PIPING AND FITINGS AS REQUIRED. FIELD VERIFY ACTUAL LOCATION OF PIPING, DRAINS AND UNIT POSITION/MOUNTING. SHIFT UNIT AS NECESSARY TO PROVIDE SERVICE CLEARANCE. PROVIDE BI-POLAR IONIZATION FILTER IN SUPPLY DUCT. INSULATE ALL CONDENSATE PIPING.
- ② NEW OUTSIDE SUPPLY AIR AND EXHAUST AIR DUCTWORK FROM ASSOCIATED ROOFTOP DOAS UNIT. COORDINATE ROUTING OF NEW DUCTWORK IN EXISTING CEILING CAVITY. PROVIDE NECESSARY FLEWS AND OFFSETS TO MINIMIZE RELOCATION OF OTHER BUILDING UTILITIES (PIPING, WIRING, CONDUIT AND SUPPORTS).
- ③ NEW BAS WALL-MOUNTED TEMPERATURE SENSOR ASSOCIATED WITH REPLACEMENT HVAC UNIT. MATCH EXISTING SENSOR LOCATIONS, TYPICAL.
- ④ NEW SUPPLY AIR AND EXHAUST AIR UP TO NEW DOAS UNIT ON ROOF. COORDINATE CUTTING OF OPENING IN EXISTING CONCRETE ROOF STRUCTURE FOR ROUTING OF CUTWORK BETWEEN JOIST. CONTRACTOR TO FIELD INSTALL SUPPLY SIDE SMOKE DETECTOR IN THE VERTICAL.
- ⑤ CONNECT EXISTING SUPPLY AND RETURN AIR DUCT UP TO REPLACEMENT UNIT. REBALANCE SYSTEM TO SCHEDULED AIRFLOWS.
- ⑥ PROVIDE NEW DUCT-MOUNTED SMOKE DETECTOR.



COPYRIGHT © 2018
This drawing is the property of Foreman, Seeley, Fountain Architecture and may not be used, copied or reused without expressed written permission. © 2018

Revisions:

No.	Description

**HVAC AND ROOFING RENOVATIONS FOR
BRITT ELEMENTARY SCHOOL**

2503 SKYLAND DRIVE SW
SNELLVILLE, GEORGIA 30078

Facility Code
3050

FOREMAN | SEELEY | FOUNTAIN
architecture

3001 Gorman Lake Drive, Suite 150, Peachtree Corners, Georgia 30071
(770) 774-8433 | www.FSArchitecture.com | (770) 774-8448

Sheet Title:
CLASSROOM BUILDING NORTH - HVAC NEW WORK PART PLAN

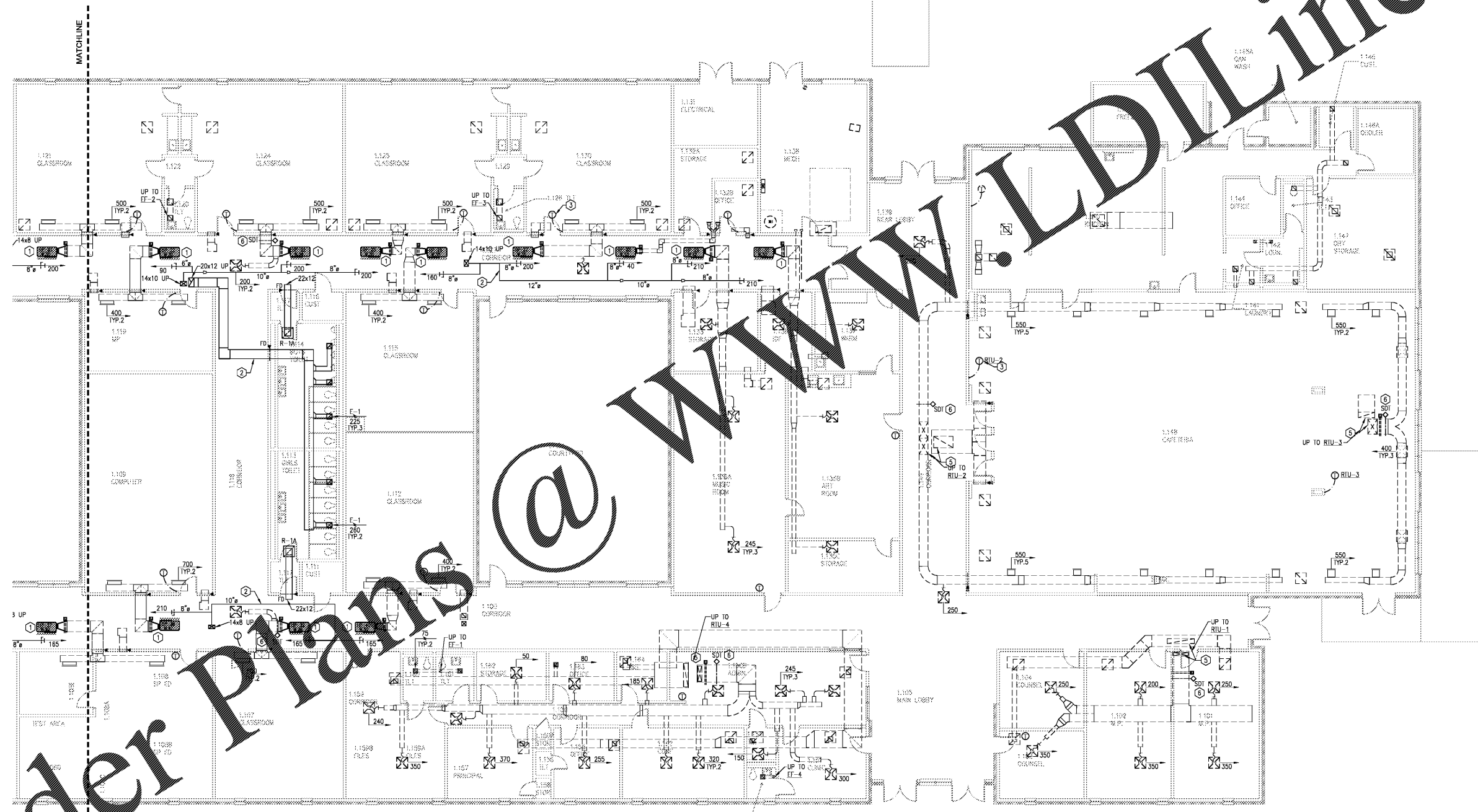
Drawn By: GSP

Scale: AS NOTED

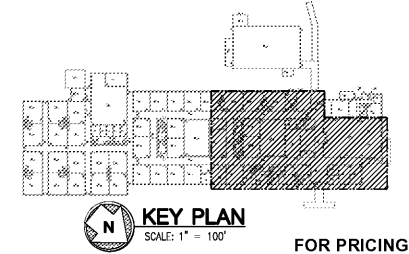
Date: 12/14/2018

Job No.: 18JS97

Sheet No.:
M2.2



1 CLASSROOM BUILDING NORTH - HVAC NEW WORK PART PLAN
M2.2 SCALE: 1/8" = 1'-0"



Order Plans @ WWW.LDLINE.COM