

GENERAL NOTES

1. SEE M0.1 FOR HVAC GENERAL NOTES.

KEY NOTES

- ① REMOVE EXISTING WATER SOURCE HEAT PUMP (WSHP) FOR REPLACEMENT WITH NEW UNIT (CABINET, VALVES AND CONTROLS).
- ② REMOVE EXISTING COOLING TOWER AND ASSOCIATED SUPPORTS, PUMP, PIPING AND CONTROLS. CAP UNDERGROUND PIPING AND ABANDON IN PLACE.
- ③ REMOVE EXISTING GRILLE AND EXHAUST AIR DUCTWORK FROM CEILING UP TO CONNECTION WITH ROOF-MOUNTED FAN/GRABBY VENT, TYPICAL.
- ④ REMOVE SUPPLY AND EXHAUST AIR DUCTWORK ASSOCIATED WITH ROOF-MOUNTED ENERGY RECOVERY UNIT, TYPICAL. PATCH/SEAL REMAINING OPENINGS IN FIRE-RATED WALLS PER ARCHITECTURAL DETAILS.
- ⑤ REMOVE SUPPLY AIR FAN AND ASSOCIATED DUCTWORK UP TO INTAKE HOOD ON ROOF, TYPICAL.
- ⑥ REMOVE RELIEF AIR DUCTWORK UP TO HOOD TO BE CLOSED, TYPICAL.



COPYRIGHT © 2018
This drawing is the property of Foreman, Seeley, Fountain Architecture and may not be used, copied or reprinted without expressed written permission.
© 2018

Revisions:

**HVAC AND ROOFING RENOVATIONS FOR
BRITT ELEMENTARY SCHOOL**

2503 SKYLAND DRIVE SW
SNELLVILLE, GEORGIA 30078

Facility Code
3050

FOREMAN | SEELEY | FOUNTAIN
architecture

3001 GARDNER LANE, SUITE 150, PEACHtree CENter, GEORGIA 30071
(770) 724-8433 | www.fsfarchitecture.com | (770) 724-8468

Sheet Title:
CLASSROOM BUILDING
NORTH - HVAC
DEMOLITION PART PLAN

Drawn By: GBP

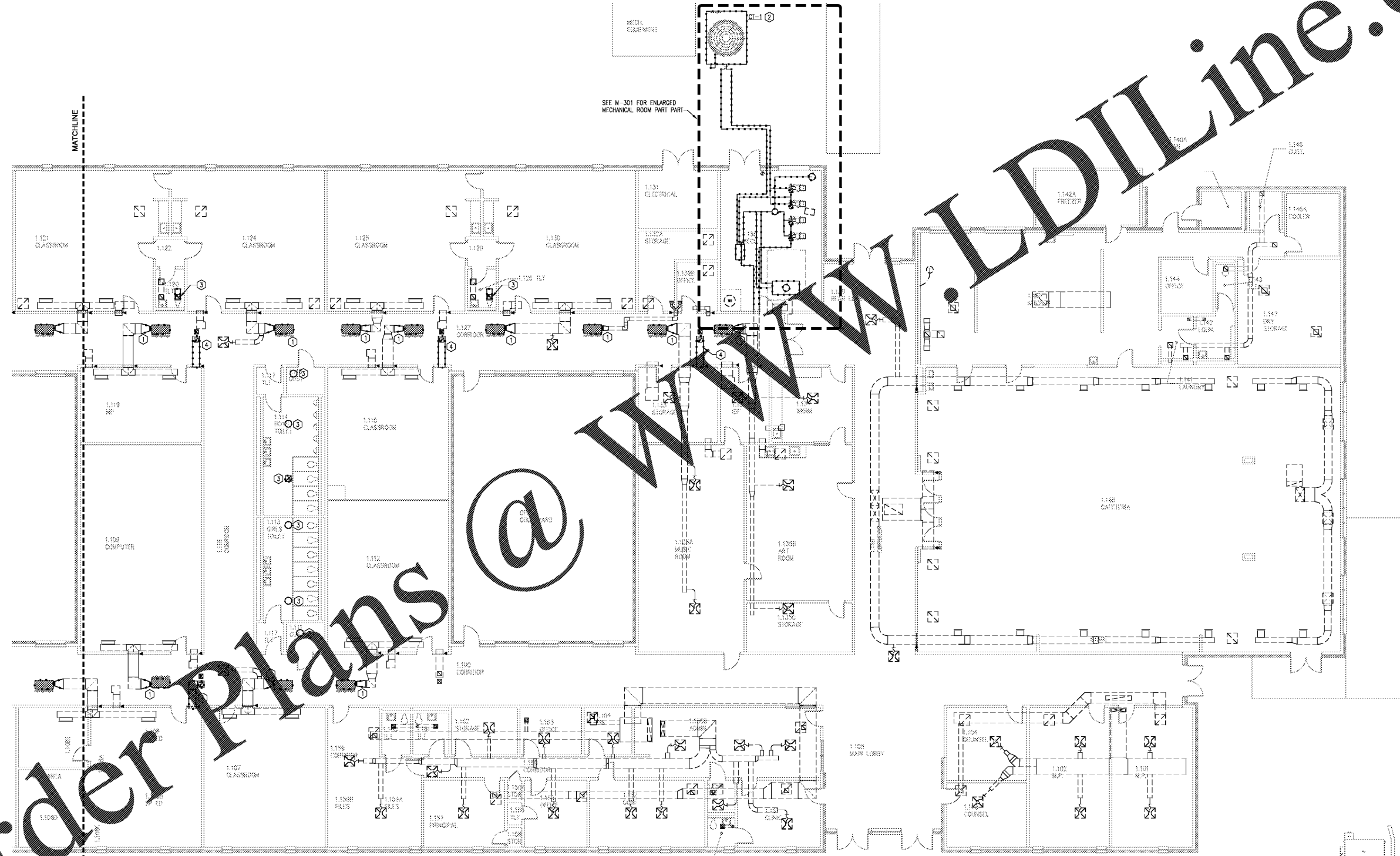
Scale: AS NOTED

Date: 12/14/2018

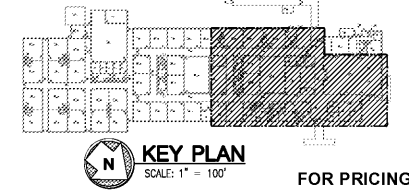
Job No.: 18/S97

Sheet No.:

M1.2



1 CLASSROOM BUILDING NORTH - HVAC DEMOLITION PART PLAN
SCALE: 1/8" = 1'-0"



Order Plans @ www.LDLine.com