

Order Plans @ www.LDILine.com



**COPYRIGHT OWNERSHIP:**  
This drawing is the property of Foreman Seeley Fountain Architecture and may not be used, copied or reprinted without expressed written permission.  
© 2018

Revisions:

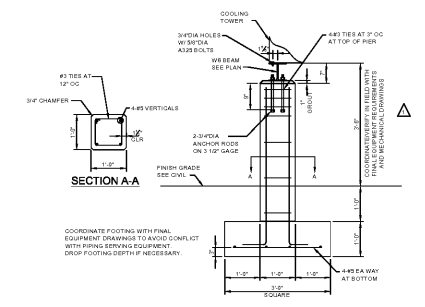

**HVAC AND ROOFING RENOVATIONS FOR  
BRITT ELEMENTARY SCHOOL**

2603 SKYLAND DRIVE SW  
SNELLVILLE, GEORGIA 30078

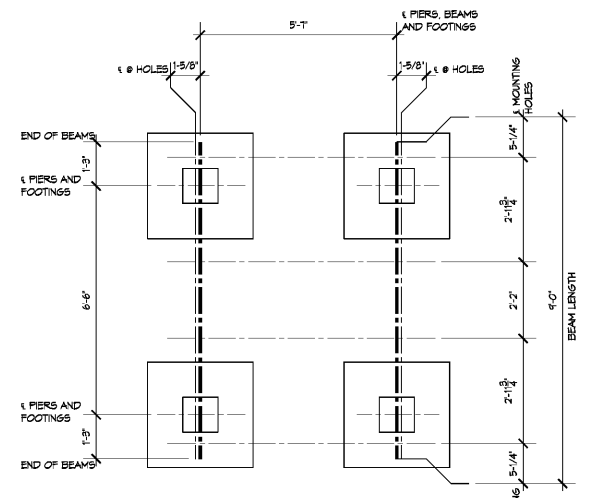
Facility Code  
# 3050

**FOREMAN SEELEY FOUNTAIN  
architecture**

3001 Government Lake Drive, Suite 150, Peachtree Corners, Georgia 30071  
(770) 728-8433 www.fsarchitecture.com Fax (770) 728-8446



**2 COOLING TOWER SUPPORTS**  
SCALE: 1/2" = 1'-0"



**1 FOUNDATION AT COOLING TOWER**  
SCALE: 1/2" = 1'-0"

CONFIRM ALL COOLING TOWER SUPPORT DIMENSIONS AND ORIENTATION WITH FINAL EQUIPMENT DRAWINGS BEFORE FABRICATION OR INSTALLATION. COORDINATE LOCATION AND ORIENTATION WITH MECHANICAL AND SITE DRAWINGS.

FOR PRICING

Sheet Title:  
**DETAILS**

Drawn By: DBM  
Scale: AS NOTED  
Date: 12/14/2018  
Job No: 1810  
Sheet No:

**A6.2**