



Copyright Ownership: This drawing is the property of Foreman Seelye Fountain Architects and may not be used, copied or altered without expressed written permission. © 2018

Revisions	

HVAC AND ROOFING RENOVATIONS FOR BRITT ELEMENTARY SCHOOL

2603 SKYLAND DRIVE SW
SNELLVILLE, GEORGIA 30078

Facility Code # 3050

FOREMAN | SEELEY | FOUNTAIN
architect

3001 Government Lake Drive, Suite 150, Peachtree Corners, Georgia 30071
(770) 728-8433 www.fsarchitecture.com

Sheet Title: DETAILS

Drawn By: DBM

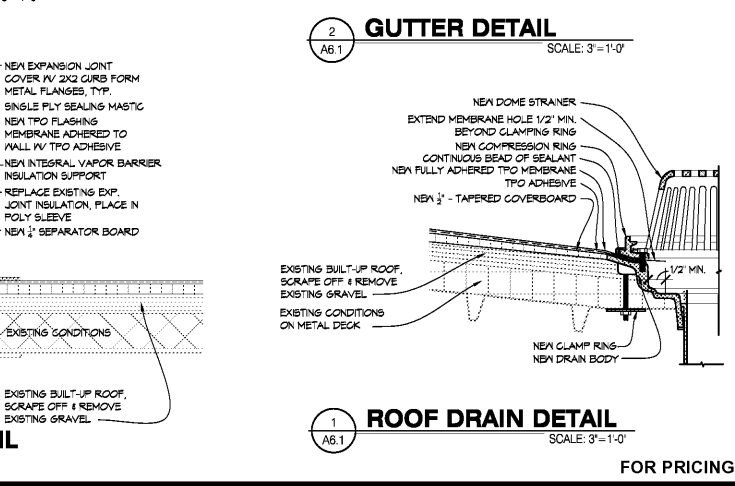
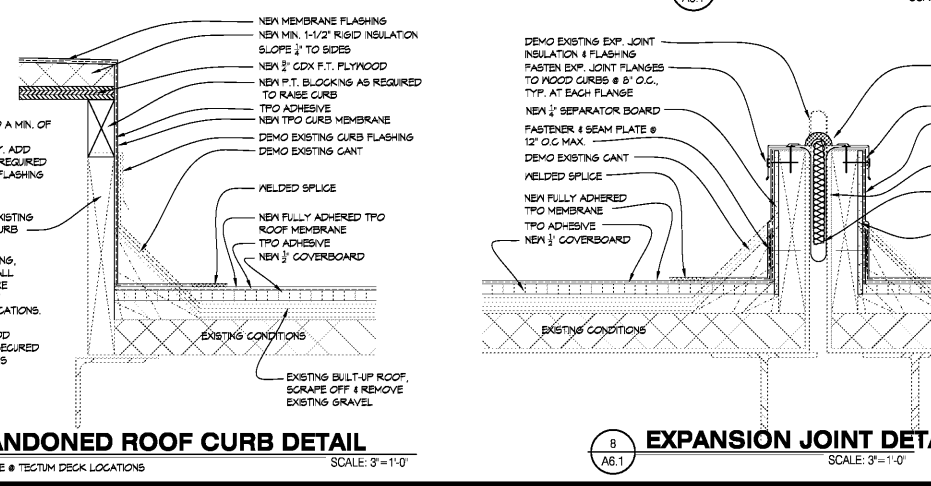
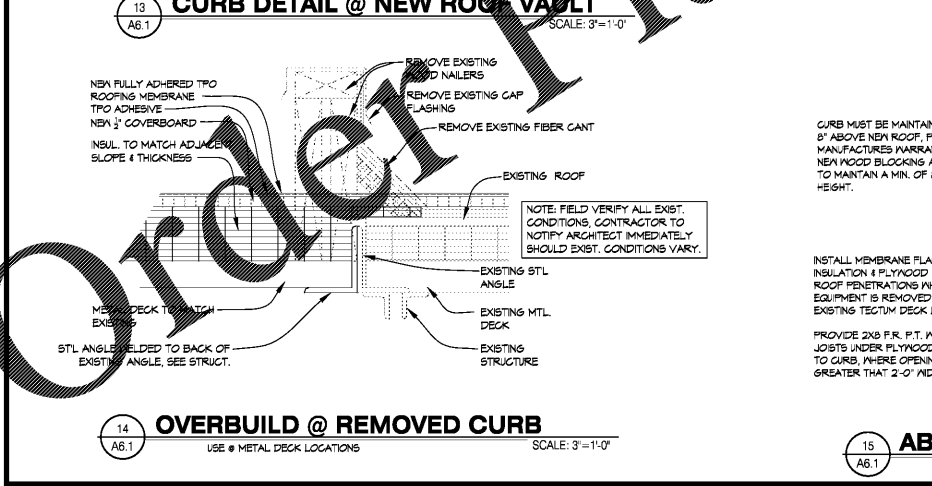
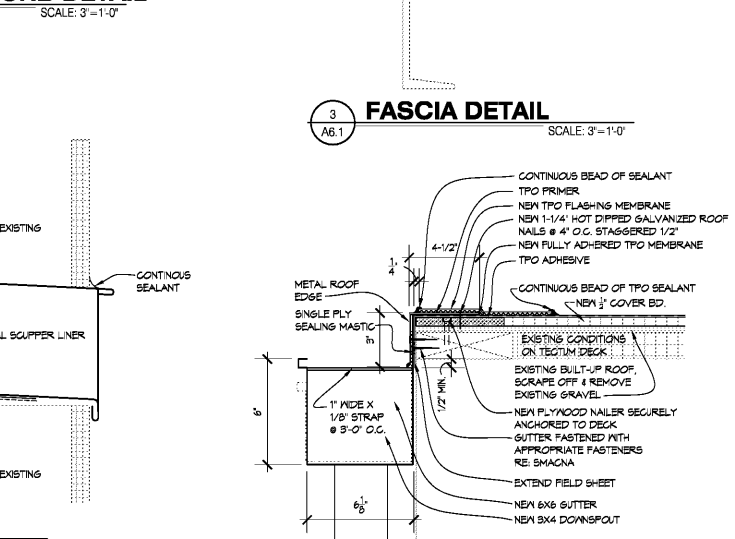
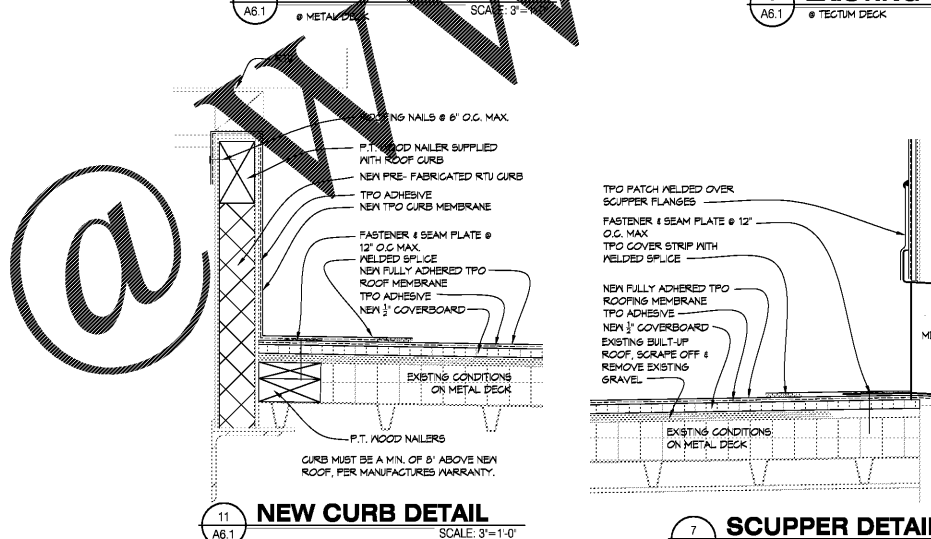
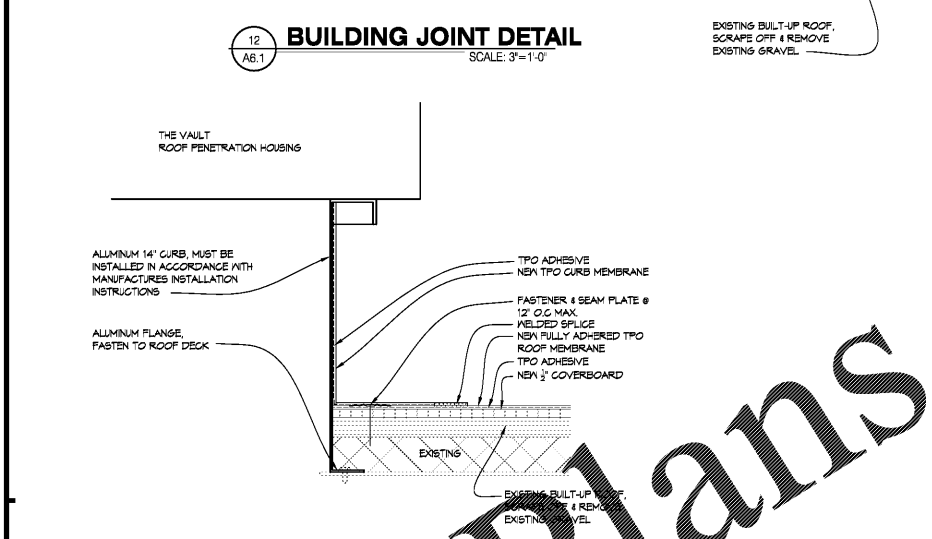
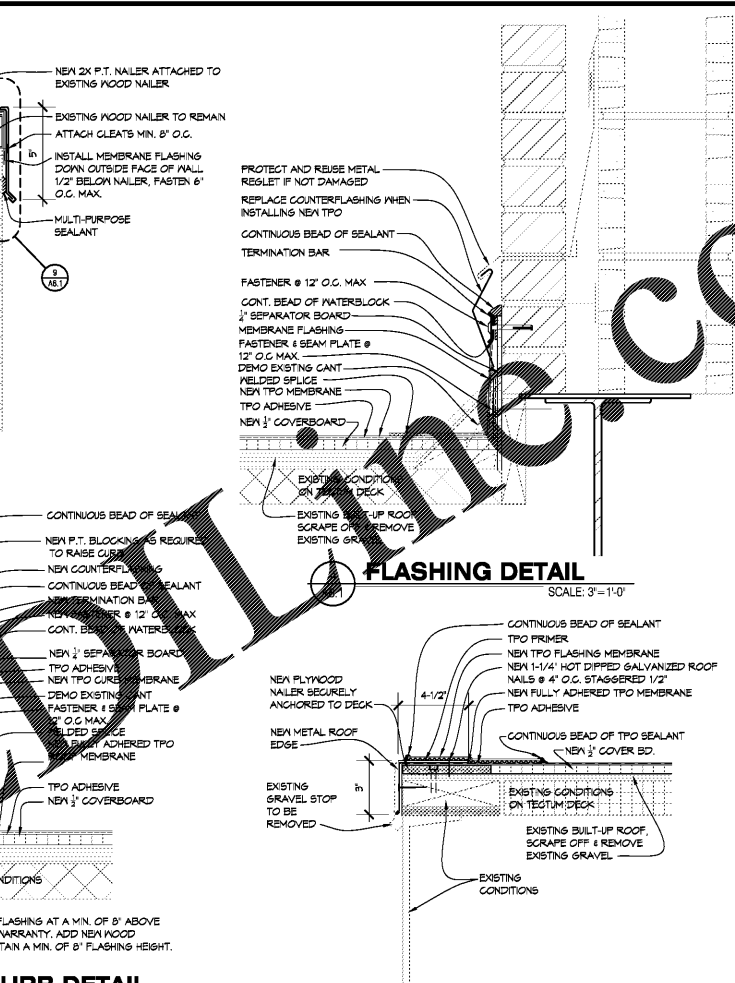
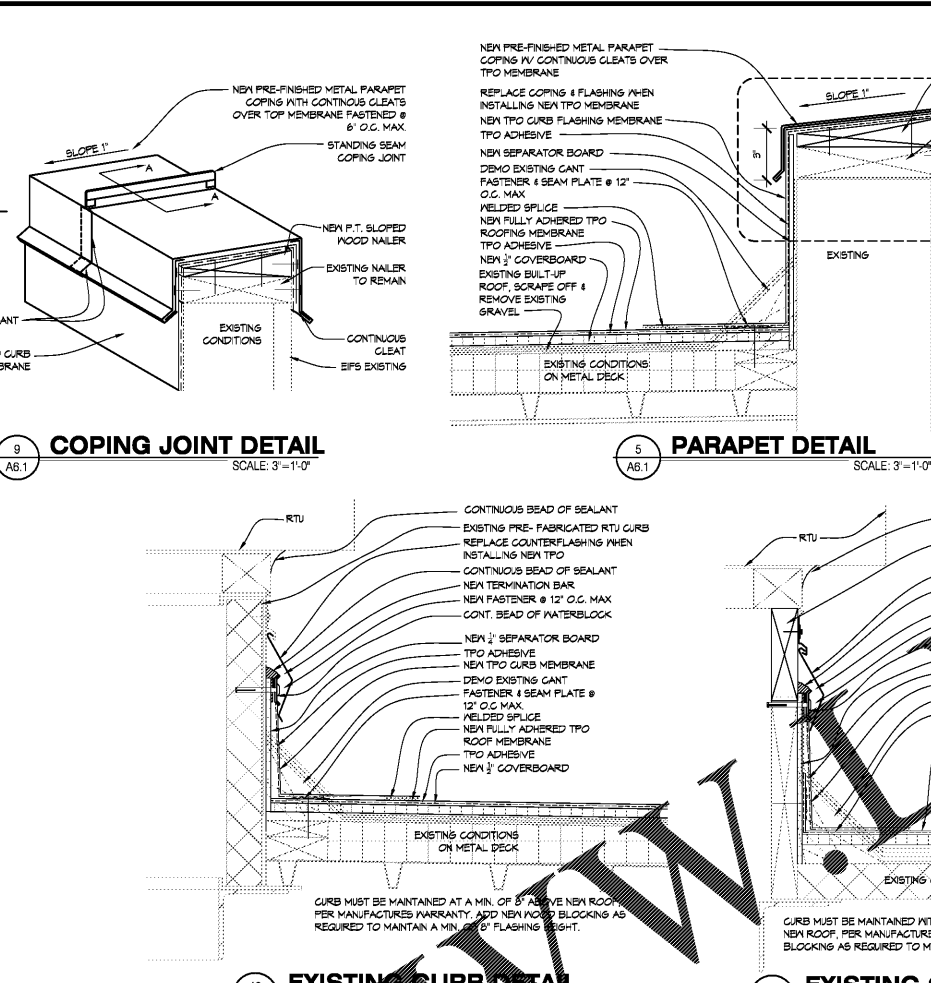
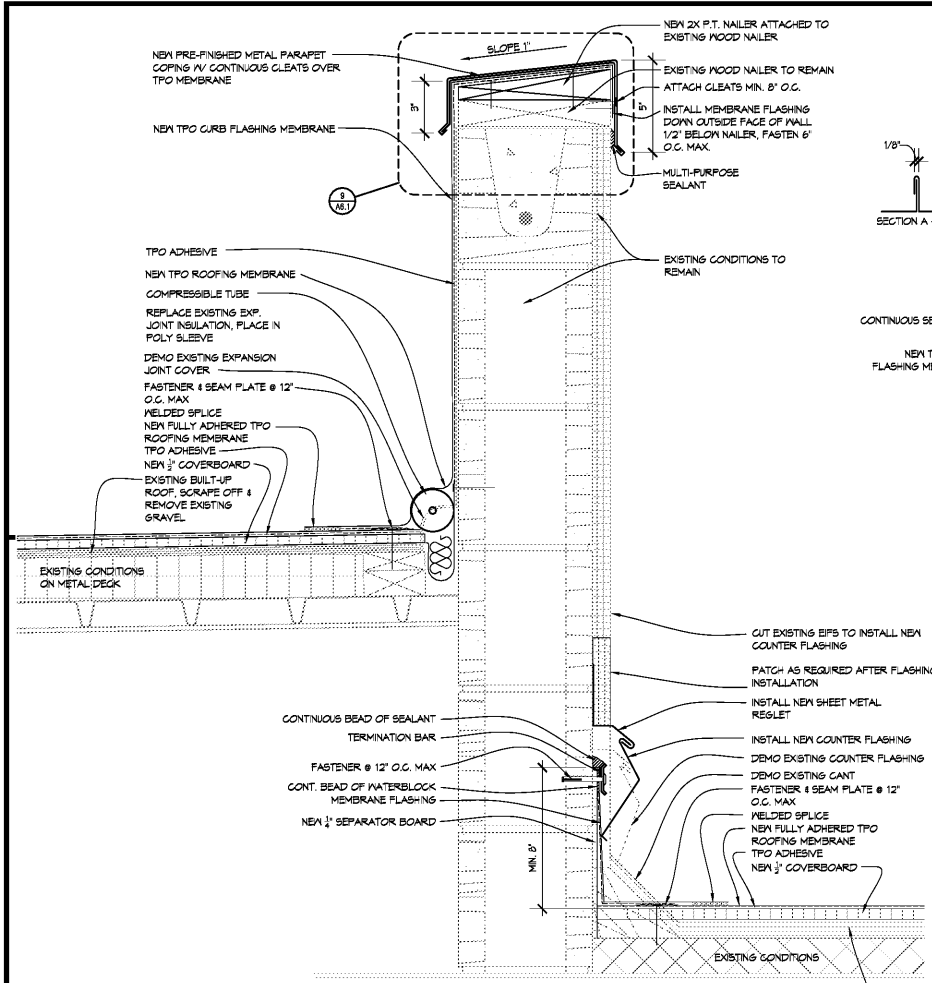
Scale: AS NOTED

Date: 12/14/2018

Job No.: 1810

Sheet No.:

A6.1



FOR PRICING

Order Plans @