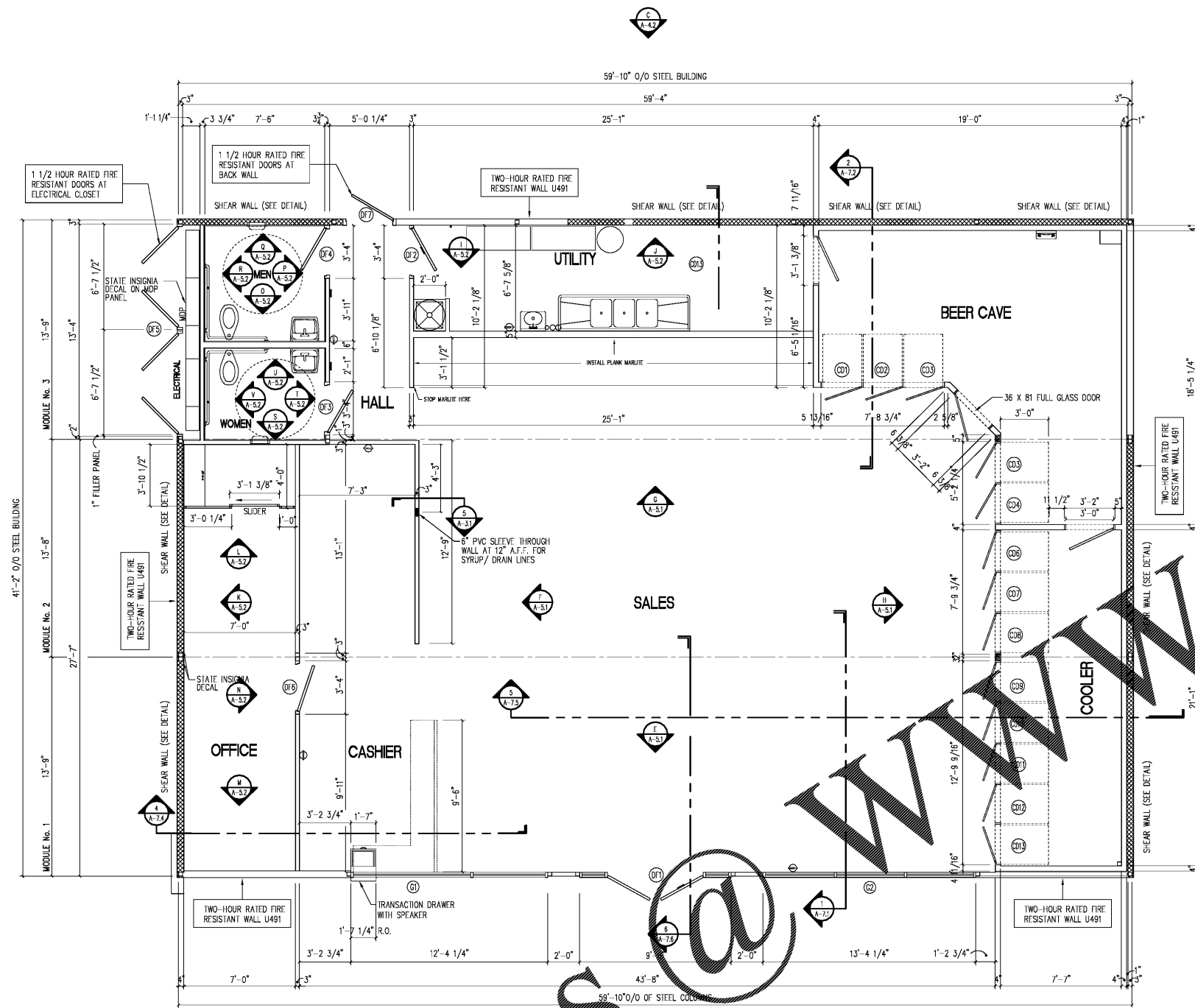
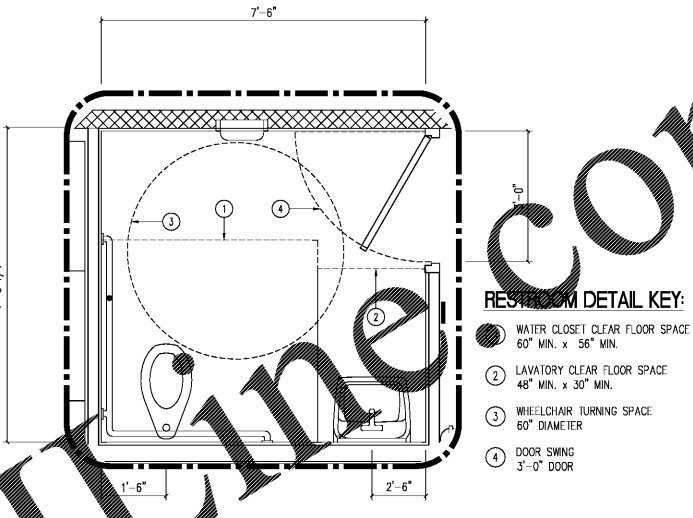


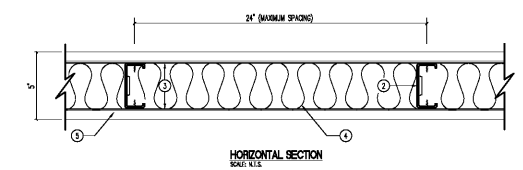
01 JAN 2012



FLOOR PLAN
SCALE: 1/4" = 1'-0"



RESTROOM DETAIL
SCALE: 1/2" = 1'-0"

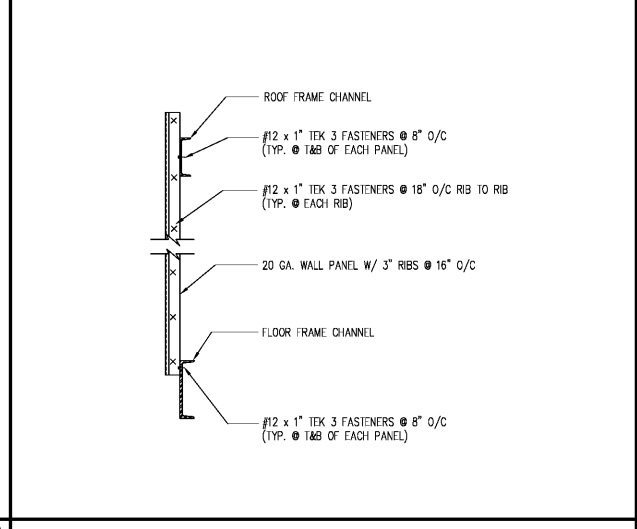
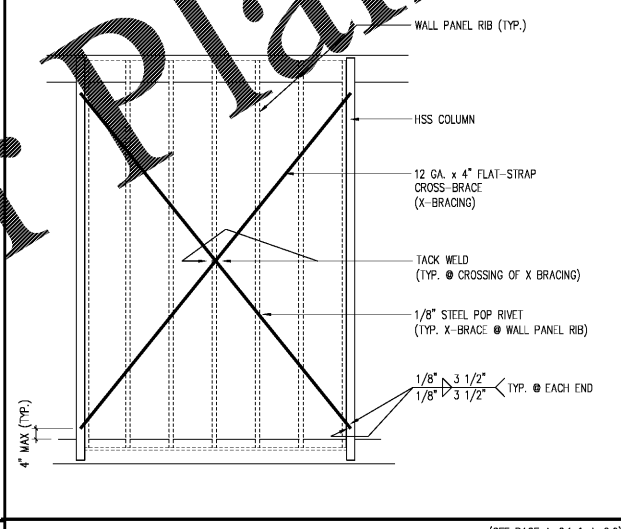
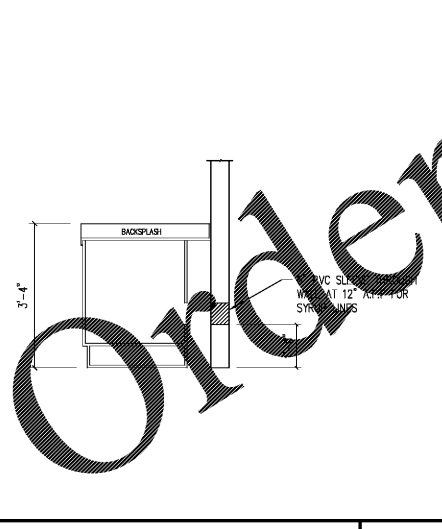


DESIGN NO. U491
ASSEMBLY RATING - 1 HR. AND 2 HR.

1. FLOOR AND CEILING TRACK - MIN 3-5/8" WIDE, 1-1/4" DEEP CHANNEL MADE FROM MIN NO. 18 G35 GALVANIZED STEEL ATTACHED TO MASONRY OR CONCRETE WITH FASTENERS SPACED 24" O.C.
2. STEEL STUDS - MIN 3-1/2" WIDE, 1-5/8" DEEP MADE FROM MIN NO. 20 G35 GALV. STEEL STUDS. THE MAX STUD SPACING OF WALL ASSEMBLY SHALL NOT EXCEED 24". THE ALLOWABLE LOAD ON THE STUD SHALL NOT EXCEED 64 PERCENT OF THE MAXIMUM ALLOWABLE AXIAL LOAD COMPUTED IN ACCORDANCE WITH THE CURRENT EDITION OF THE SPECIFICATION FOR THE DESIGN OF COLD-FORMED STEEL STRUCTURAL MEMBERS BY THE AMERICAN IRON AND STEEL INSTITUTE. STUDS ATTACHED TO FLOOR AND CEILING TRACKS WITH 1/2" LONG TYPE S-12 PAN HEAD SELF-DRILLING, SELF-TAPPING STEEL SCREWS ON BOTH SIDES OF STUDS. THE STUDS AND THE TRACK CHANNELS WERE CLASSIFIED BY UNDERWRITERS LABORATORIES INC. AS STRUCTURAL STEEL MEMBERS.
3. LATERAL BRACING - MIN 1.5 IN. WIDE, 18 G35 GALV. STEEL STRAPPING SPACED MAX 38 IN. O.C. THE STRAPPING IS ATTACHED TO THE FLANGES OF EACH STUD WITH 1/2 IN. LONG TYPE S-12 PAN HEAD SELF-DRILLING, SELF-TAPPING STEEL SCREWS. FOR INTERIOR WALLS THE STRAPPING IS ATTACHED ON BOTH SIDES OF THE STUDS. FOR EXTERIOR WALLS THE STRAPPING IS EITHER ATTACHED ON BOTH SIDES OR ON THE FIE SIDE ONLY.
4. INSULATION - 3" MINIMAL WOOL MATS
5. WALLBOARD - 3/4 IN. THICK, 48 IN. WIDE, "BETROCK" BRAND GYPSUM PANELS "ULTRAROCK" CORE. ONE LAYER OF WALLBOARD ON EACH SIDE OF STUD. APPLIED VERTICALLY WITH JOINT COVERS OVER STUDS. FASTENED TO STUDS AND THE TRACKS WITH 1 IN. LONG TYPE S-12 SELF-TAPPING, SELF-DRILLING WALLBOARD SCREWS SPACED 16 IN. O.C. ALONG PERIMETER AND 12 IN. O.C. IN THE FIELD OF THE BOARD. JOINTS LOCATED OVER STUDS AND STAGGERED ON OPPOSITE SIDES OF THE ASSEMBLY.
6. JOINT TAPE AND COMPOUND - (NOT SHOWN) VINYL OR CEMENT DRY OR PREMIXED JOINT COMPOUND APPLIED IN TWO COATS TO JOINTS AND SCREW HEADS. PAPER TAPE, 2 IN. WIDE, EMBEDDED IN FIRST LAYER OF COMPOUND OVER ALL JOINTS. (FORMETIC CALCULATED)

DETAIL - 2 HOUR FIRE WALL

Order Plans @ WWW.LDILLINE.COM



PROFESSIONAL ENGINEER

MODEL No. AH2500-01-13

SCALE: 1/4" = 1'-0"

DRAWN BY: WJ DATE: 03-04-14

CHECKED BY: DATE:

STATE USE

DATE: 03-04-14

DRWG. No. **A-31**

SHEET 5 OF 5

JOB No. WQA07365-1

DATE	BY
<p>HESS CORPORATION</p> <p>42' x 60' AH2500 MODULAR BUILDING</p> <p>FLOOR PLAN</p> <p>1630BUSHWICK AVENUE</p> <p>BROOKLYN, NY</p>	
<p>MADISON INDUSTRIES</p> <p>160 CALIFORNIA AVE. SUITE 1000</p> <p>LOS ANGELES, CA 90001</p> <p>323.483.4861</p> <p>Fax: 323.562.1013</p>	<p>MADISON INDUSTRIES</p> <p>9000 W. TOLSON AVE. SUITE 100</p> <p>CHRYSTAL CITY, VA 22025</p> <p>703.483.4848</p> <p>Fax: 703.483.4801</p>

THESE DRAWINGS AND ALL INFORMATION HEREON ARE OF A CONVEYOR NATURE AND REMAIN THE PROPERTY OF MADISON INDUSTRIES (M). ANY USE OR REPRODUCTION OF THESE DRAWINGS FOR ANY PURPOSE, EXCEPT BY WRITTEN PERMISSION OF MADISON INDUSTRIES IS STRICTLY PROHIBITED.