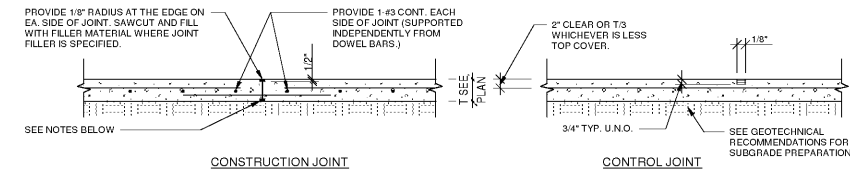


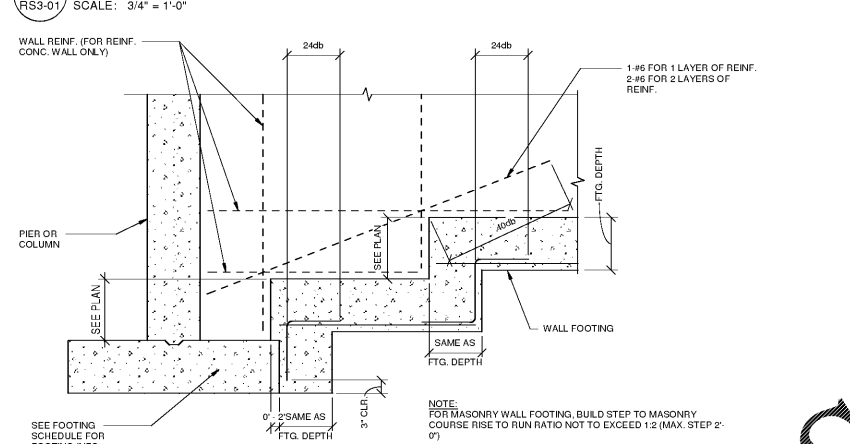
PLAIN BAR DOWEL SCHEDULE

SLAB DEPTH (INCHES)	DOWEL SIZE (DIA. INCHES)	DOWEL LENGTH (INCHES)	DOWEL SPACING (INCHES)
4	3/4	12	12
5 - 6	3/4	16	12



- NOTES:
- SEE PLAN FOR SLAB THICKNESS AND REINF.
  - CONTROL CONSTRUCTION JOINT SPACING NOT TO EXCEED 36\"/>
- DOWEL NOTES:
- LIGHTLY COAT THE EXPOSED END OF THE DOWELS WITH A PARAFFIN-BASED LUBRICANT, ASPHALT EMULSION, FORM OIL OR GREASE IMMEDIATELY BEFORE PLACING CONCRETE ON THE SECOND SIDE OF THE JOINT OR USE A PLASTIC OR METAL SLEEVE SPECIFICALLY MANUFACTURED FOR THIS PURPOSE, TO PREVENT A BOND BETWEEN THE DOWEL AND THE CONCRETE.

14 CONSTRUCTION AND CONTROL JOINTS AT SLAB ON GRADE



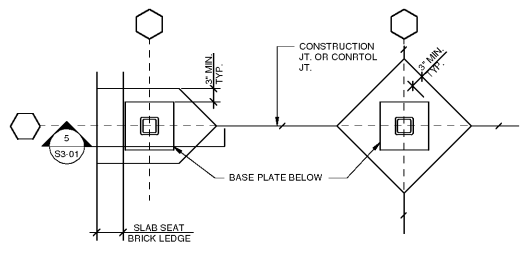
15 TYPICAL DETAIL - WALL FOOTING STEP

WALL TENSION LAP SPlice LENGTH FOR GRADE 60 REINFORCING BARS

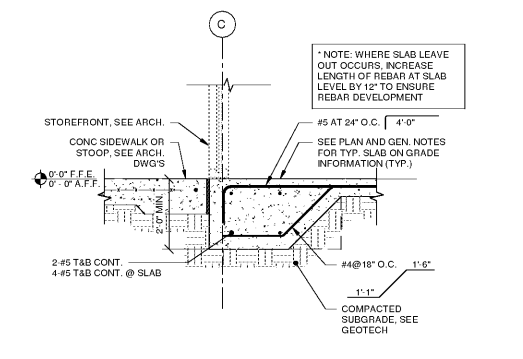
Bar Size	CONCRETE																													
	F <sub>c</sub> -3000						F <sub>c</sub> -4000						F <sub>c</sub> -5000						F <sub>c</sub> -6000						F <sub>c</sub> -10000					
	CLASS A (1.3'L <sub>d</sub> )		CLASS B (1.3'L <sub>d</sub> )		CLASS A (1.3'L <sub>d</sub> )		CLASS B (1.3'L <sub>d</sub> )		CLASS A (1.3'L <sub>d</sub> )		CLASS B (1.3'L <sub>d</sub> )		CLASS A (1.3'L <sub>d</sub> )		CLASS B (1.3'L <sub>d</sub> )		CLASS A (1.3'L <sub>d</sub> )		CLASS B (1.3'L <sub>d</sub> )		CLASS A (1.3'L <sub>d</sub> )		CLASS B (1.3'L <sub>d</sub> )							
#4	17	N/A	21	N/A	14	N/A	19	N/A	13	N/A	17	N/A	12	N/A	16	N/A	12	N/A	16	N/A	12	N/A	16	N/A						
#5	24	17	32	21	21	14	27	19	19	13	24	17	12	22	16	12	21	16	14	12	18	16	13	12						
#6	33	20	43	26	29	17	37	22	26	15	30	20	23	14	30	22	13	28	17	19	12	25	16	18						
#7	53	30	69	39	46	26	60	34	31	24	43	31	38	22	49	35	20	45	26	31	18	40	23	29						
#8	66	39	86	50	57	37	74	43	38	31	53	43	47	27	61	43	25	56	33	38	22	49	29	36						
#9	80	48	104	62	69	49	90	54	46	38	66	56	56	34	73	54	32	68	40	46	27	60	36	44						
#10	96	58	124	76	83	61	108	67	57	45	86	66	66	41	88	63	38	82	50	55	34	72	44	53						
#11	112	70	146	91	97	73	131	77	67	54	103	79	79	49	103	64	74	46	96	59	65	40	84	52	62					

- NOTES:
- L<sub>d</sub> = TENSION DEVELOPMENT LENGTH.
  - ALL SPlice LENGTHS ARE IN INCHES.
  - HORIZONTAL WALL REINFORCING PLACED IN THE OUTER LAYER (NEAREST CONCRETE SURFACE).
  - VERTICAL WALL REINFORCING PLACED IN THE INNER LAYER (INSIDE HORIZONTAL WALL SHEAR REINFORCING).
  - TABLE LISTED ON MINIMUM HORIZONTAL REINFORCING OF #4@18\"/>

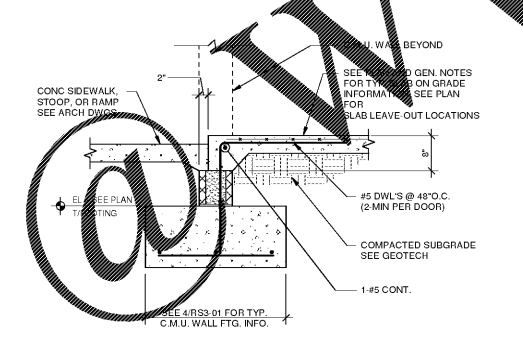
16 TENSION LAP SPlice LENGTH FOR GRADE 60 REINFORCING BARS



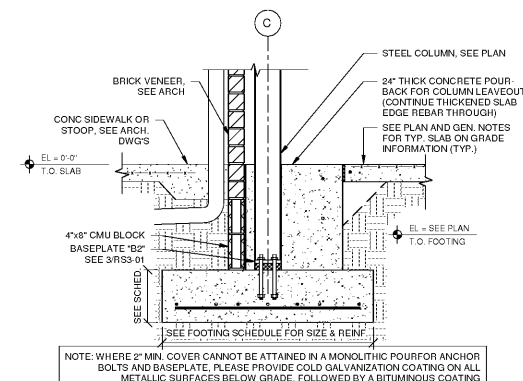
9 TYP. SLAB POUR JOINTS AT COLUMNS



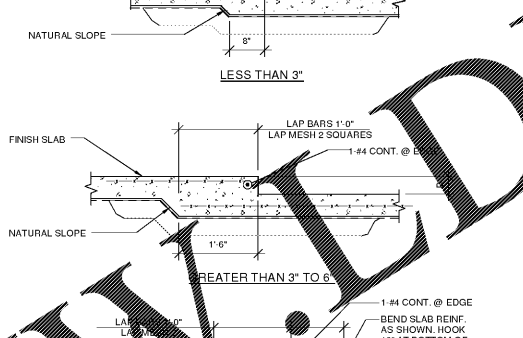
10 TYPICAL STOREFRONT DETAIL



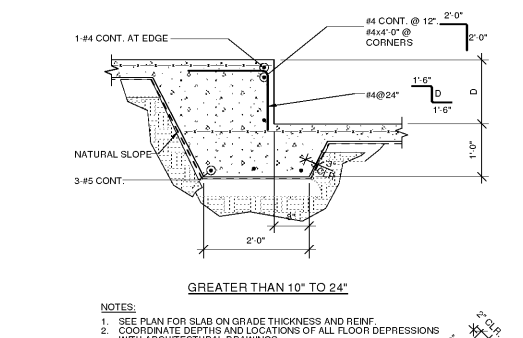
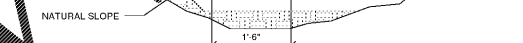
11 DOOR OPENING THRU CMU WALL



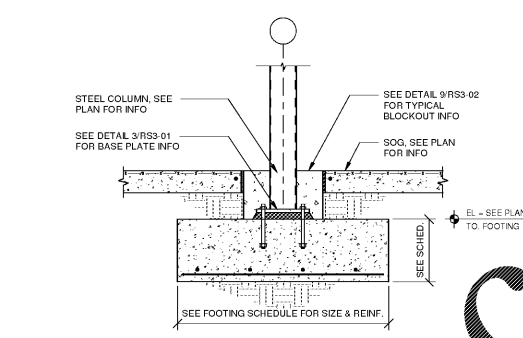
5 STOREFRONT PILASTER DETAIL



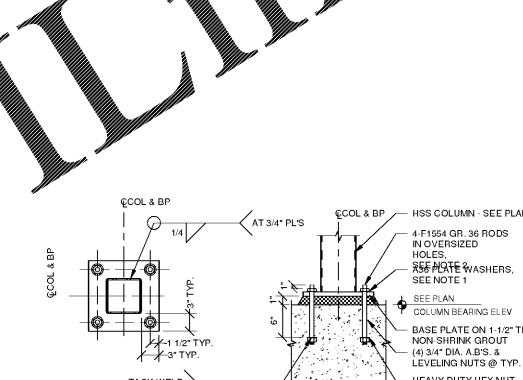
7 SLAB-ON-GRADE STEP DETAIL



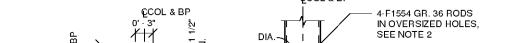
12 SLAB LEAVE OUT AT DOOR



1 TYPICAL INTERIOR COLUMN DETAIL



3 BASEPLATE DETAILS



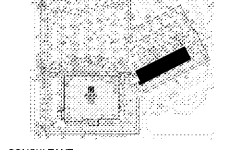
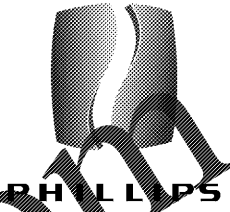
BASE PLATE SCHEDULE

MARK	DEPTH (D)	WIDTH (W)	THICKNESS (T)	ANCHOR DIA.	ANCHOR SPACING (S)	FLANGE WELD (F)	REMARKS
B1	12"	12"	1/2"	3/4"	3/4"	3/16	NOTES 1,2
B2	12"	6"	3/4"	3/4"	9"	3/16	NOTES 1,2

NOTES:

- PROVIDE 1/4" THICK PLATE WASHER WITH 2" OUTSIDE DIAMETER FOR CIRCULAR WASHERS AND 2" WIDTHS FOR SQUARE WASHERS.
- PROVIDE 1 1/2" DIAMETER HOLES.
- WHERE (T) IS DENOTED ON PLAN, SWITCH ORIENTATION OF BASEPLATE AXIS.

4 TYP. CMU WALL FOOTING SECTION



ISSUE & REVISION RECORD

#	DATE	DESCRIPTION
1	08/02/2018	75% COMPLETE SET
2	08/24/2018	100% COMPLETE SET

PROJECT: MARKETPLACE at THE BRAY @ LIBERTY PARK VESTAVIA HILLS, AL

CLIENT: BLACKWATER REAL ESTATE

PHILLIPS JOB NUMBER: 185801  
 ISSUE DATE: 08/24/18  
 DRAWN BY/CHECKED BY: PRD / NVE  
 DRAWING TITLE: FOUNDATION DETAILS  
 SHEET NUMBER: RS3-01

5901 PEACHTREE DUNWOODY RD. BUILDING A, SUITE 450 ATLANTA, GEORGIA 30328



PHILLIPS PART.COM 770-394-1616